

ski-doo®

SHOP MANUAL

2003

ZX Series



4 8 4 2 0 0 0 4 2

2003 Shop Manual

ZX SERIES

BOMBARDIER
RECREATIONAL PRODUCTS



Legal deposit:

National Library of Quebec
National Library of Canada 2002

All rights reserved. No parts of this manual may be reproduced in any form without the prior written permission of Bombardier Inc.

©Bombardier Inc. 2002

Technical Publications
Bombardier Inc.
Valcourt (Quebec) Canada

Printed in Canada

®*Registered trademarks of Bombardier Inc.

This document contains the trademarks of the following companies:

Crest® is a trademark of Crest Industries Inc.

Loctite® is a trademark of Loctite Corporation

Molykote® is a trademark of Dow Corning Corporation

Silastic® is a trademark of Dow Corning Corporation

Snap-on® is a trademark of Snap-on Tools Corporation

Versilube® is a trademark of General Electric Company

Supertanium™ is a trademark of Premier Industrial Corporation

AMP® is a trademark of Tyco Electronics Corporation

TABLE OF CONTENTS

SECTION	SUBSECTION	PAGE
SAFETY NOTICE		III
WHAT'S NEW		IV
INTRODUCTION		V
01	SERVICE TOOLS AND SERVICE PRODUCTS	
	01 – Service tools	01-01-1
	02 – Service products	01-02-1
02	MAINTENANCE	
	01 – Table of contents	02-01-1
	02 – Maintenance chart	02-02-1
	03 – Storage	02-03-1
	04 – Preseason preparation	02-04-1
03	TROUBLESHOOTING	
	01 – Table of contents	03-01-1
	02 – Engine	03-02-1
	03 – Fuel and oil systems	03-03-1
	04 – Transmission and brake systems	03-04-1
	05 – Electrical system	03-05-1
	06 – Suspension and track	03-06-1
04	ENGINE	
	01 – Table of contents	04-01-1
	02 – 377, 503 and 552 engine types	04-02-1
	03 – 493, 593, 593 HO, 693, 793 and 793 HO engine types	04-03-1
	04 – Leak test and engine dimension measurement	04-04-1
	05 – CDI system	04-05-1
	06 – Oil injection system	04-06-1
	07 – Axial fan cooling system	04-07-1
	08 – Liquid cooling system	04-08-1
	09 – Rewind starter	04-09-1
	10 – Carburetor and fuel pump	04-10-1
	11 – Fuel tank and throttle cable	04-11-1
05	TRANSMISSION	
	01 – Table of contents	05-01-1
	02 – Drive belt	05-02-1
	03 – Drive pulley	05-03-1
	04 – Driven pulley	05-04-1
	05 – Pulley distance and alignment	05-05-1
	06 – Brake	05-06-1
	07 – Chaincase	05-07-1
	08 – Drive chain	05-08-1
06	ELECTRICAL	
	01 – Table of contents	06-01-1
	02 – Ignition timing	06-02-1
	03 – Spark plugs	06-03-1
	04 – Battery	06-04-1
	05 – Electric starter	06-05-1
	06 – Testing procedure	06-06-1

TABLE OF CONTENTS

SECTION	SUBSECTION	PAGE
07 REAR SUSPENSION	01 – Table of contents	07-01-1
	02 – SC-10 suspension	07-02-1
	03 – SC-10 III suspension	07-03-1
	04 – Drive axle	07-04-1
	05 – Track	07-05-1
08 STEERING/ FRONT SUSPENSION	01 – Table of contents	08-01-1
	02 – Steering system	08-02-1
	03 – Suspension and ski system	08-03-1
09 BODY/FRAME	01 – Table of contents	09-01-1
	02 – Body	09-02-1
	03 – Frame	09-03-1
10 TECHNICAL DATA	01 – SI metric information guide.....	10-01-1
	02 – Engines	10-02-1
	03 – Vehicles.....	10-03-1
	04 – Technical data legends.....	10-04-1
11 WIRING DIAGRAMS	01 – Wiring diagrams	11-01-1

SAFETY NOTICE

This manual has been prepared as a guide to correctly service and repair some 2003 Ski-Doo snowmobiles. See model list below.

This edition was primarily published to be used by snowmobile mechanic technicians who are already familiar with all service procedures relating to Bombardier made snowmobiles. Mechanic technicians should attend continuous training courses given by Bombardier Training Dept.

Please note that the instructions will apply only if proper hand tools and special service tools are used.

This *Shop Manual* uses technical terms which may be slightly different from the ones used in the *Parts Catalog*.

It is understood that this manual may be translated into another language. In the event of any discrepancy, the English version shall prevail.

The content depicts parts and/or procedures applicable to the particular product at time of writing. *Service* and *Warranty Bulletins* may be published to update the content of this manual. Make sure to read and understand these.

In addition, the sole purpose of the illustrations throughout the manual, is to assist identification of the general configuration of the parts. They are not to be interpreted as technical drawings or exact replicas of the parts.

The use of Bombardier parts is most strongly recommended when considering replacement of any component. Dealer and/or distributor assistance should be sought in case of doubt.

The engines and the corresponding components identified in this document should not be utilized on product(s) other than those mentioned in this document.

Torque wrench tightening specifications must strictly be adhered to. Locking devices (ex.: locking tab, self-locking fasteners, etc.) must be installed or replaced with new ones. If the efficiency of a locking device is impaired, it must be renewed.

This manual emphasizes particular information denoted by the wording and symbols:

WARNING

Identifies an instruction which, if not followed, could cause serious personal injury including possibility of death.

CAUTION: Denotes an instruction which, if not followed, could severely damage vehicle components.

NOTE: Indicates supplementary information needed to fully complete an instruction.

Although the mere reading of such information does not eliminate the hazard, your understanding of the information will promote its correct use. Always use common shop safety practice.

Bombardier Inc. disclaims liability for all damages and/or injuries resulting from the improper use of the contents. We strongly recommend that any services be carried out and/or verified by a highly skilled professional mechanic. It is understood that certain modifications may render use of the vehicle illegal under existing federal, provincial and state regulations.

WHAT'S NEW

WHAT'S NEW

CARBURETOR AND FUEL PUMP 04-10

- Revised leak test for float bowl ventilation.
- Revised test for DPM solenoid.
- Revised leak test for DPM manifold.

STEERING SYSTEM 08-02

- Added procedure for new heating grips.
- Revised alignment procedures.

INTRODUCTION

This *Shop Manual* covers the following Bombardier made 2003 snowmobiles:

MODEL	PACKAGE	ENGINE	COLOR	COUNTRY	MODEL NUMBER
GRAND TOURING (E)	FAN	380F (R)	Black	(EUR)	2628
GRAND TOURING (E)	FAN	380F (R)	Black	(U.S.)	2446
GRAND TOURING (E)	FAN	380F (R)	Black	(CDN)	2445
GRAND TOURING (E)	FAN	550F (R)	Black	(CDN)	2443
GRAND TOURING (E)	FAN	550F (R)	Black	(U.S.)	2444
GRAND TOURING (E)	FAN	550F (R)	Black	(EUR)	2627
GRAND TOURING (E)	SE	600 (R)	Black	(U.S./CDN)	2433
GRAND TOURING (E)	SE	600 (R)	Autumn Red metallic	(U.S./CDN)	2434
GRAND TOURING (E)	SE	600 (R)	Black	(U.S./CDN)	2435
GRAND TOURING (E)	SE	600 (R)	Autumn Red metallic	(U.S./CDN)	2436
GRAND TOURING (E)	SE	600 (R)	Autumn Red metallic	(EUR)	2624
GRAND TOURING (E)	SE	700 (R)	Autumn Red metallic	(U.S./CDN)	2430
GRAND TOURING (E)	SE	700 (R)	Black	(U.S./CDN)	2431
GRAND TOURING (E)	SE	700 (R)	Black	(U.S./CDN)	2429
GRAND TOURING (E)	SE	700 (R)	Autumn Red metallic	(U.S./CDN)	2432
GRAND TOURING (E)	SPORT	500 (R)	Autumn Red metallic	(U.S./CDN)	2442
GRAND TOURING (E)	SPORT	500 (R)	Black	(U.S./CDN)	2441
GRAND TOURING (E)	SPORT	500 (R)	Autumn Red metallic	(EUR)	2626
GRAND TOURING (E)	SPORT	600 (R)	Black	(U.S./CDN)	2439
GRAND TOURING (E)	SPORT	600 (R)	Autumn Red metallic	(U.S./CDN)	2440
GRAND TOURING (E)	SPORT	700 (R)	Autumn Red metallic	(U.S./CDN)	2438
GRAND TOURING (E)	SPORT	700 (R)	Black	(U.S./CDN)	2437
LEGEND (E)	FAN	380F (R)	Black	(CDN)	2370
LEGEND (E)	FAN	380F (R)	Black	(U.S.)	2371
LEGEND (E)	FAN	550F (R)	Black	(CDN)	2368
LEGEND (E)	FAN	550F (R)	Black	(U.S.)	2369
LEGEND (E)	SE	600 (R)	2 tone Moon - Blue	(U.S./CDN)	2381
LEGEND (E)	SE	600 (R)	Black	(U.S./CDN)	2382
LEGEND (E)	SE	600 (R)	2 tone Moon - Blue	(U.S./CDN)	2383
LEGEND (E)	SE	600 (R)	Black	(U.S./CDN)	2380
LEGEND (E)	SE	700 (R)	Black	(U.S./CDN)	2376
LEGEND (E)	SE	700 (R)	2 tone Moon - Blue	(U.S./CDN)	2377
LEGEND (E)	SE	700 (R)	Black	(U.S./CDN)	2378
LEGEND (E)	SE	700 (R)	2 tone Moon - Blue	(U.S./CDN)	2379
LEGEND (E)	SPORT	500 (R)	Black	(U.S./CDN)	2388
LEGEND (E)	SPORT	500 (R)	2 tone Moon - Blue	(U.S./CDN)	2389
LEGEND (E)	SPORT	600 (R)	2 tone Moon - Blue	(U.S./CDN)	2387
LEGEND (E)	SPORT	600 (R)	Black	(U.S./CDN)	2386
LEGEND (E)	SPORT	700 (R)	2 tone Moon - Blue	(U.S./CDN)	2385
LEGEND (E)	SPORT	700 (R)	Black	(U.S./CDN)	2384
MX Z	ADRENALINE	500	Viper Red	(U.S./CDN)	2346
MX Z	ADRENALINE	500	Black	(U.S./CDN)	2345

INTRODUCTION

MODEL	PACKAGE	ENGINE	COLOR	COUNTRY	MODEL NUMBER
MX Z	ADRENALINE	500 (R)	Viper Red	(U.S./CDN)	2350
MX Z	ADRENALINE	500 (R)	2 tone Yellow - Black	(U.S./CDN)	2596
MX Z	ADRENALINE	500 (R)	2 tone Yellow - Black	(U.S./CDN)	2595
MX Z	ADRENALINE	500 (R)	Black	(U.S./CDN)	2349
MX Z	ADRENALINE	500 (R)	2 tone Yellow - Black	(EUR)	2616
MX Z	ADRENALINE	600 HO	2 tone Yellow - Black	(U.S./CDN)	2587
MX Z	ADRENALINE	600 HO	Black	(U.S./CDN)	2333
MX Z	ADRENALINE	600 HO	Viper Red	(U.S./CDN)	2334
MX Z	ADRENALINE	600 HO (R)	Viper Red	(U.S./CDN)	2340
MX Z	ADRENALINE	600 HO (R)	Black	(U.S./CDN)	2339
MX Z	ADRENALINE	600 HO (R)	2 tone Yellow - Black	(U.S./CDN)	2590
MX Z	ADRENALINE	600 HO (R)	Black	(U.S./CDN)	2337
MX Z	ADRENALINE	600 HO (R)	Viper Red	(U.S./CDN)	2338
MX Z	ADRENALINE	600 HO (R)	2 tone Yellow - Black	(U.S./CDN)	2589
MX Z	ADRENALINE	700	Viper Red	(U.S./CDN)	2319
MX Z	ADRENALINE	700	Black	(U.S./CDN)	2318
MX Z	ADRENALINE	700 R	Viper Red	(U.S./CDN)	2326
MX Z	ADRENALINE	700 R	2 tone Yellow - Black	(U.S./CDN)	2584
MX Z	ADRENALINE	700 R	Black	(U.S./CDN)	2325
MX Z	ADRENALINE	700 R	2 tone Yellow - Black	(U.S./CDN)	2583
MX Z	ADRENALINE	700 R	Viper Red	(U.S./CDN)	2328
MX Z	ADRENALINE	800	Black	(U.S./CDN)	2306
MX Z	ADRENALINE	800	Viper Red	(U.S./CDN)	2307
MX Z	ADRENALINE	800 (R)	Black	(U.S./CDN)	2310
MX Z	ADRENALINE	800 (R)	Viper Red	(U.S./CDN)	2311
MX Z	ADRENALINE	800 (R)	2 tone Yellow - Black	(U.S./CDN)	2577
MX Z	ADRENALINE	800 (R)	Black	(U.S./CDN)	2312
MX Z	ADRENALINE	800 (R)	2 tone Yellow - Black	(U.S./CDN)	2578
MX Z	FAN	380F (R)	Black	(U.S.)	2367
MX Z	FAN	380F (R)	Black	(EUR)	2618
MX Z	FAN	380F (R)	Black	(CDN)	2366
MX Z	FAN	550F (R)	Black	(U.S.)	2639
MX Z	FAN	550F (R)	Black	(EUR)	2617
MX Z	FAN	550F (R)	Black	(CDN)	2364
MX Z	RENEGADE	600 HO	Viper Red	(U.S./CDN)	2407
MX Z	RENEGADE	600 HO	2 tone Yellow - Black	(U.S./CDN)	2605
MX Z	RENEGADE	600 HO	Black	(U.S./CDN)	2406
MX Z	RENEGADE	600 HO (R)	Black	(U.S./CDN)	2419
MX Z	RENEGADE	600 HO (R)	2 tone Yellow - Black	(U.S./CDN)	2607
MX Z	RENEGADE	600 HO (R)	Viper Red	(U.S./CDN)	2420
MX Z	RENEGADE	600 HO (R)	Black	(U.S./CDN)	2417
MX Z	RENEGADE	600 HO (R)	Viper Red	(EUR)	2620
MX Z	RENEGADE	600 HO (R)	Viper Red	(U.S./CDN)	2418
MX Z	RENEGADE	800	Black	(U.S./CDN)	2390
MX Z	RENEGADE	800	Viper Red	(U.S./CDN)	2391

INTRODUCTION

MODEL	PACKAGE	ENGINE	COLOR	COUNTRY	MODEL NUMBER
MX Z	RENEGADE	800 (R)	2 tone Yellow - Black	(EUR)	2619
MX Z	RENEGADE	800 (R)	Black	(U.S./CDN)	2394
MX Z	RENEGADE	800 (R)	Viper Red	(U.S./CDN)	2395
MX Z	RENEGADE	800 (R)	2 tone Yellow - Black	(U.S./CDN)	2601
MX Z	RENEGADE	800 (R)	2 tone Yellow - Black	(U.S./CDN)	2602
MX Z	RENEGADE	800 (R)	Viper Red	(U.S./CDN)	2397
MX Z	RENEGADE	800 (R)	Black	(U.S./CDN)	2396
MX Z	TRAIL	500	Black	(U.S./CDN)	2360
MX Z	TRAIL	500 (R)	Black	(U.S./CDN)	2363
MX Z	TRAIL	600	Black	(U.S./CDN)	2358
MX Z	TRAIL	600 (R)	Black	(U.S./CDN)	2359
MX Z (E)	ADRENALINE	500 (R)	2 tone Yellow - Black	(U.S./CDN)	2598
MX Z (E)	ADRENALINE	500 (R)	Viper Red	(U.S./CDN)	2355
MX Z (E)	ADRENALINE	500 (R)	Black	(U.S./CDN)	2354
MX Z (E)	ADRENALINE	500 (R)	2 tone Yellow - Black	(U.S./CDN)	2597
MX Z (E)	ADRENALINE	600 HO (R)	Black	(U.S./CDN)	2341
MX Z (E)	ADRENALINE	600 HO (R)	Viper Red	(U.S./CDN)	2342
MX Z (E)	ADRENALINE	600 HO (R)	2 tone Yellow - Black	(U.S./CDN)	2591
MX Z (E)	ADRENALINE	600 HO (R)	Black	(U.S./CDN)	2343
MX Z (E)	ADRENALINE	600 HO (R)	2 tone Yellow - Black	(U.S./CDN)	2592
MX Z (E)	ADRENALINE	700 R	Black	(U.S./CDN)	2331
MX Z (E)	ADRENALINE	700 R	Viper Red	(U.S./CDN)	2330
MX Z (E)	ADRENALINE	700 R	2 tone Yellow - Black	(U.S./CDN)	2586
MX Z (E)	ADRENALINE	700 R	Black	(U.S./CDN)	2329
MX Z (E)	ADRENALINE	700 R	2 tone Yellow - Black	(U.S./CDN)	2585
MX Z (E)	ADRENALINE	800 (R)	Black	(U.S./CDN)	2316
MX Z (E)	ADRENALINE	800 (R)	Viper Red	(U.S./CDN)	2317
MX Z (E)	ADRENALINE	800 (R)	2 tone Yellow - Black	(U.S./CDN)	2579
MX Z (E)	ADRENALINE	800 (R)	Viper Red	(U.S./CDN)	2315
MX Z (E)	ADRENALINE	800 (R)	Black	(U.S./CDN)	2314
MX Z (E)	RENEGADE	600 HO (R)	Black	(U.S./CDN)	2421
MX Z (E)	RENEGADE	600 HO (R)	Viper Red	(U.S./CDN)	2422
MX Z (E)	RENEGADE	600 HO (R)	2 tone Yellow - Black	(U.S./CDN)	2609
MX Z (E)	RENEGADE	600 HO (R)	Black	(U.S./CDN)	2423
MX Z (E)	RENEGADE	600 HO (R)	Viper Red	(U.S./CDN)	2424
MX Z (E)	RENEGADE	600 HO (R)	2 tone Yellow - Black	(U.S./CDN)	2610
MX Z (E)	RENEGADE	800 (R)	2 tone Yellow - Black	(U.S./CDN)	2604
MX Z (E)	RENEGADE	800 (R)	Black	(U.S./CDN)	2400
MX Z (E)	RENEGADE	800 (R)	Black	(U.S./CDN)	2398
MX Z (E)	RENEGADE	800 (R)	Viper Red	(U.S./CDN)	2399
MX Z (E)	RENEGADE	800 (R)	2 tone Yellow - Black	(U.S./CDN)	2603
SKANDIC	SPORT	500F (R)	Black	(CDN)	2447
SKANDIC	SPORT	500F (R)	Black	(U.S.)	2448
SUMMIT	ADRENALINE	600 HO	Black	(U.S./CDN)	2515
SUMMIT	ADRENALINE	600 HO	Voltage Blue	(U.S./CDN)	2514

INTRODUCTION

MODEL	PACKAGE	ENGINE	COLOR	COUNTRY	MODEL NUMBER
SUMMIT	ADRENALINE	600 HO (R)	2 tone Black - Orange	(U.S./CDN)	2522
SUMMIT	ADRENALINE	600 HO (R)	Black	(U.S./CDN)	2521
SUMMIT	ADRENALINE	600 HO (R)	Black	(U.S./CDN)	2524
SUMMIT	ADRENALINE	600 HO (R)	Voltage Blue	(U.S./CDN)	2520
SUMMIT	ADRENALINE	600 HO (R)	2 tone Black - Orange	(U.S./CDN)	2525
SUMMIT	ADRENALINE	600 HO (R)	2 tone Black - Orange	(EUR)	2630
SUMMIT	ADRENALINE	600 HO (R)	Voltage Blue	(U.S./CDN)	2523
SUMMIT	ADRENALINE	700	Black	(U.S./CDN)	2496
SUMMIT	ADRENALINE	700	Voltage Blue	(U.S./CDN)	2495
SUMMIT	ADRENALINE	700 (R)	Voltage Blue	(U.S./CDN)	2507
SUMMIT	ADRENALINE	700 (R)	Black	(U.S./CDN)	2508
SUMMIT	ADRENALINE	700 (R)	2 tone Black - Orange	(U.S./CDN)	2509
SUMMIT	ADRENALINE	800 HO	Black	(U.S./CDN)	2484
SUMMIT	ADRENALINE	800 HO	Voltage Blue	(U.S./CDN)	2483
SUMMIT	ADRENALINE	800 HO (R)	Black	(U.S./CDN)	2490
SUMMIT	ADRENALINE	800 HO (R)	2 tone Black - Orange	(U.S./CDN)	2491
SUMMIT	ADRENALINE	800 HO (R)	2 tone Black - Orange	(U.S./CDN)	2494
SUMMIT	ADRENALINE	800 HO (R)	Voltage Blue	(U.S./CDN)	2489
SUMMIT	FAN	550F (R)	Black	(U.S.)	2450
SUMMIT	FAN	550F (R)	2 tone Black - Orange	(U.S.)	2455
SUMMIT	FAN	550F (R)	2 tone Black - Orange	(EUR)	2640
SUMMIT	FAN	550F (R)	Black	(CDN)	2449
SUMMIT	FAN	550F (R)	2 tone Black - Orange	(CDN)	2454
SUMMIT	HIGHMARK	700	Black	(U.S./CDN)	2554
SUMMIT	HIGHMARK	700	Voltage Blue	(U.S./CDN)	2553
SUMMIT	HIGHMARK	700 (R)	2 tone Black - Orange	(U.S./CDN)	2561
SUMMIT	HIGHMARK	700 (R)	Black	(U.S./CDN)	2560
SUMMIT	HIGHMARK	700 (R)	Voltage Blue	(U.S./CDN)	2559
SUMMIT	HIGHMARK	800 HO	Voltage Blue	(U.S./CDN)	2541
SUMMIT	HIGHMARK	800 HO	Black	(U.S./CDN)	2542
SUMMIT	HIGHMARK	800 HO (R)	2 tone Black - Orange	(U.S./CDN)	2549
SUMMIT	HIGHMARK	800 HO (R)	Voltage Blue	(U.S./CDN)	2550
SUMMIT	HIGHMARK	800 HO (R)	Black	(U.S./CDN)	2548
SUMMIT	HIGHMARK	800 HO (R)	Voltage Blue	(U.S./CDN)	2547
SUMMIT	HIGHMARK X	800 HO	Voltage Blue	(U.S./CDN)	2526
SUMMIT	HIGHMARK X	800 HO	Black	(U.S./CDN)	2527
SUMMIT	HIGHMARK X	800 HO	2 tone Black - Orange	(U.S./CDN)	2528
SUMMIT	HIGHMARK X	800 HO (R)	2 tone Black - Orange	(U.S./CDN)	2537
SUMMIT	HIGHMARK X	800 HO (R)	Black	(U.S./CDN)	2536
SUMMIT	HIGHMARK X	800 HO (R)	Voltage Blue	(U.S./CDN)	2535
SUMMIT	HIGHMARK X	800 HO (R)	2 tone Black - Orange	(U.S./CDN)	2534
SUMMIT	HIGHMARK X	800 HO (R)	Voltage Blue	(U.S./CDN)	2532
SUMMIT	HIGHMARK X	800 HO (R)	Black	(U.S./CDN)	2533
SUMMIT	HIGHMARK Xtreme	800 HO (R)	2 tone Black - Orange	(U.S./CDN)	2540
SUMMIT	HIGHMARK Xtreme	800 HO (R)	Black	(U.S./CDN)	2539

INTRODUCTION

MODEL	PACKAGE	ENGINE	COLOR	COUNTRY	MODEL NUMBER
SUMMIT	HIGHMARK Xtreme	800 HO (R)	Voltage Blue	(U.S./CDN)	2538
SUMMIT	X	700 (R)	2 tone Black - Orange	(U.S./CDN)	2479
SUMMIT	X	700 (R)	2 tone Black - Orange	(U.S./CDN)	2482
SUMMIT	X	700 (R)	Black	(U.S./CDN)	2478
SUMMIT	X	700 (R)	Voltage Blue	(U.S./CDN)	2477
SUMMIT	X	800 HO	Voltage Blue	(U.S./CDN)	2456
SUMMIT	X	800 HO	Black	(U.S./CDN)	2457
SUMMIT	X	800 HO	2 tone Black - Orange	(U.S./CDN)	2458
SUMMIT	X	800 HO (R)	Black	(U.S./CDN)	2469
SUMMIT	X	800 HO (R)	Voltage Blue	(U.S./CDN)	2465
SUMMIT	X	800 HO (R)	Black	(U.S./CDN)	2466
SUMMIT	X	800 HO (R)	2 tone Black - Orange	(U.S./CDN)	2467
SUMMIT	X	800 HO (R)	Voltage Blue	(U.S./CDN)	2468
SUMMIT	X	800 HO (R)	Voltage Blue	(EUR)	2629
SUMMIT	X	800 HO (R)	2 tone Black - Orange	(U.S./CDN)	2470

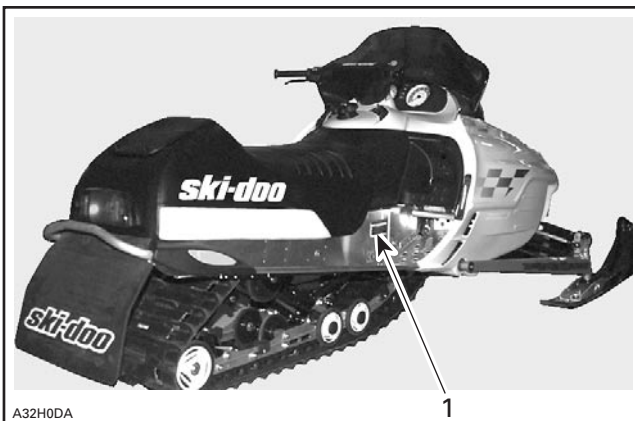
All the above listed models are ZX Series models.



TYPICAL — ZX SERIES

VEHICLE IDENTIFICATION NUMBER

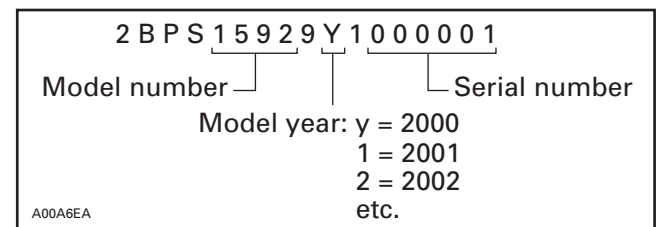
Vehicle Identification Number Location



TYPICAL

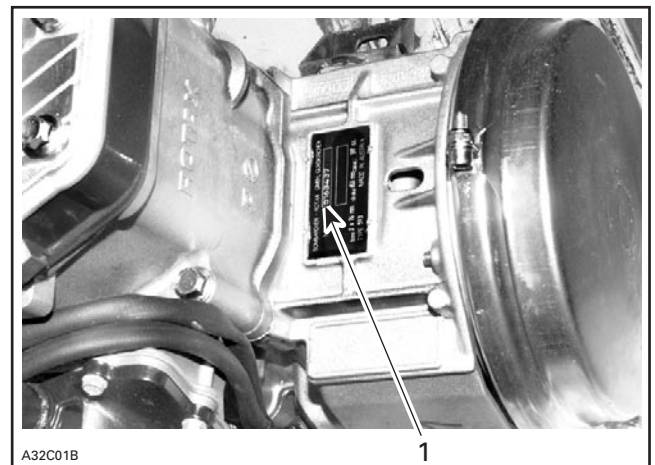
1. Vehicle identification number

Identification Number Meaning



ENGINE SERIAL NUMBER

Engine Serial Number Location



TYPICAL

1. Engine serial number

INTRODUCTION

LIST OF ABBREVIATIONS USED IN THIS MANUAL

A	ampere
amp	ampere
A•h	ampere-hour
AC	alternate current
ACM	acceleration and control modulator
ADSA	advanced direct shock action
AMG	absorbed glass mat
BDC	bottom dead center
BTDC	before top dead center
°C	degree Celsius
cc	cubic centimeter
CDI	capacitor discharge ignition
CTR	center
cm	centimeter
cm ²	square centimeter
cm ³	cubic centimeter
DC	direct current
DESS	digitally encoded security system
DPM	digital performance management
°F	degree Fahrenheit
FC	fan cooled
fl. oz	fluid ounce
ft	foot
GRD	ground
H.A.C.	high altitude compensator
hal.	halogen
HI	high
IFP	internal floating piston
imp. oz	imperial ounce
in	inch
in ²	square inch
in ³	cubic inch
k	kilo (thousand)
kg	kilogram
km/h	kilometer per hour
kPa	Kilopascal
L	liter
lb	pound

lbf	pound (force)
lbf/in ²	pound per square inch
LH	left hand
LO	low
LT	long track
m	meter
MAG	magneto
Max.	maximum
Min.	minimum
mL	milliliter
mm	millimeter
M.E.	millennium edition
MPEM	multi-purpose electronic module
MPH	mile per hour
N	newton
N.A.	not applicable
no.	number
00.0	continuity
0.L	open line (open circuit)
O.D.	outside diameter
OPT	optional
oz	ounce
P/N	part number
PSI	pound per square inch
PTO	power take off
R	rectangular
RH	right hand
RAVE	Rotax adjustable variable exhaust
RER	Rotax electronic reverse
RPM	revolution per minute
RMS	root mean square
RRIM	reinforced reaction injection molding
Sp. Gr.	specific gravity
ST	semi-trapez
TDC	top dead center
TRA	total range adjustable
U.S. oz	ounce (United States)
V	volt
Vac	volt (alternative current)
VSA	variable sheave angle

ARRANGEMENT OF THE MANUAL

The manual is divided into 11 major sections:

01 SERVICE TOOLS AND SERVICE PRODUCTS

02 MAINTENANCE

03 TROUBLESHOOTING

04 ENGINE

05 TRANSMISSION

06 ELECTRICAL

07 REAR SUSPENSION

08 STEERING/FRONT SUSPENSION

09 BODY/FRAME

10 TECHNICAL DATA

11 WIRING DIAGRAMS

Each section is divided in various subsections, and again, each subsection has one or more division.

INTRODUCTION

This *Shop Manual* uses technical terms which may be slightly different from the ones in the parts catalog.

TYPICAL PAGE

Page heading indicates section and subsection detailed.

Subsection title indicates beginning of the subsection.

Italic subtitle above exploded view indicates pertaining models.

Drop represents a service product to be applied to a surface. In this case Loctite 271 to screw threads.

Bold face number indicates special procedure concerning this part.

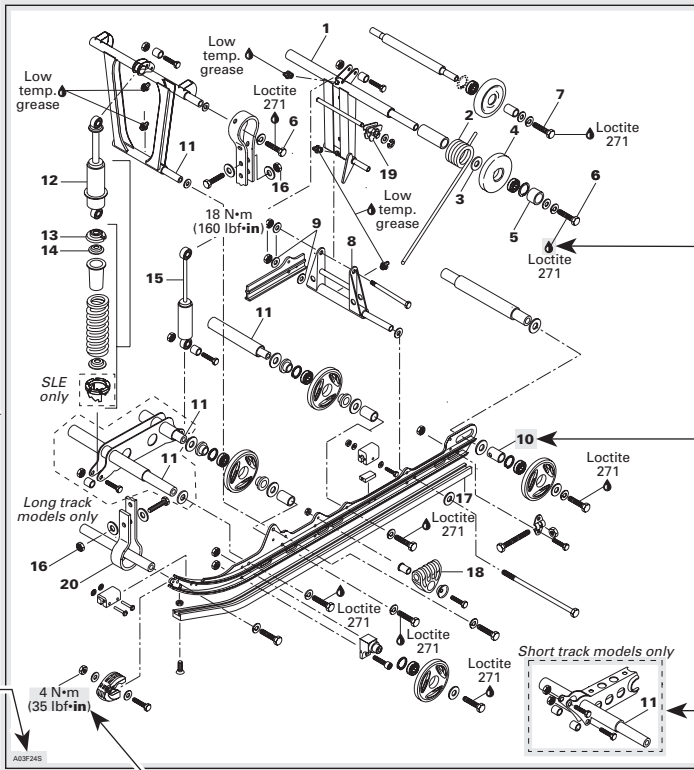
Dotted box contains parts of a particular model in this case the short track models only.

Page numbering system:
 07: REAR SUSPENSION section
 01: SUSPENSION SC-10 SPORT, TOURING AND MOUNTAIN subsection
 1: First page of this subsection

Section 07 REAR SUSPENSION
 Subsection 01 (SUSPENSION SC-10 SPORT, TOURING AND MOUNTAIN)

SUSPENSION SC-10 SPORT, TOURING AND MOUNTAIN

Grand Touring 500/580, Formula 500/583 and Summit 500



Exploded view assists you in identifying parts and related positions.

Illustration number for publishing process.

Document number for publishing process.

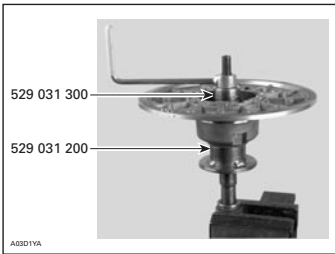
Tightening torque nearby fastener. In this case, nut must be torqued to **4 N•m or 35 lbf•in.**

CAUTION: Pay attention to torque specifications. Some of these are in **lbf•in** instead of **lbf•ft**. Use appropriate torque wrench.

TYPICAL PAGE

Section 05 TRANSMISSION
Subsection 03 (DRIVEN PULLEY)

Turn puller handle and sliding half at once to extract the bushing.



A03D1YA

INSTALLATION

Countershaft

CAUTION: Always apply anti-seize lubricant (P/N 413 701 000) on the countershaft before final pulley installation.

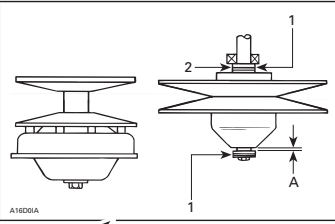
A-Series and B-Series Only

Should installation procedure be required, refer to BRAKE then look for **Brake Disc and Countershaft Bearing Adjustment**.

Reinstall the pulley on the countershaft by reversing the removal procedure.

All Models

Check end play of driven pulley on countershaft by pushing pulley towards outer housing so that the inner shims (P/N 504 108 200) contact it. Measure end play at the mounting screw end between shim(s) and pulley. See illustration.



A18D01A

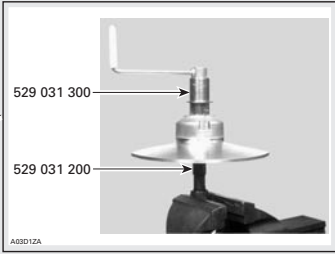
TYPICAL — TOP VIEW
1. Shim (P/N 504 108 200) (as required)
2. Contact
A. 0.2 to 1 mm (0 to 3/64 in)

Torque retaining screw no. 13 to 25 N•m (18 lbf•ft).

IMPORTANT: Large bushing retaining screws and washers must be removed before small bushing installation.

Coat bushing outside diameter with Loctite 609 (P/N 413 703 100).

Install bushing as following photo.



A03D1ZA

ADJUSTMENT

Refer to **PULLEY DISTANCE AND ALIGNMENT** to adjust pulley distance. Adjust drive belt height between pulley halves to obtain specified belt deflection.

ASSEMBLY

Came Slider Shoe

When replacing slider shoes no. 4, always install a new set (3 shoes) to maintain equal pressure on the cam.

Assemble driven pulley components by reversing the disassembly procedure.

Cam

Coat cam no. 18 interior with anti-seize lubricant.

05-03-5

A01A2BS

Title indicates main procedure to be carried-out.

Italic bold face type setting indicates a particular procedure concerning a model.

Italic bold face setting in this case indicates that particular procedure for A and B-Series is finished, so from this point, all models are concerned.

"TYPICAL" caption indicates a general view which does not represent full detail. "TOP VIEW" caption helps you in understanding illustration.

Call-outs for above illustration.

Reference to look up a certain section and subsection. In this case it concerns pulleys adjustment.

Illustration always follows text to which it pertains.

Subtitle indicates a particular procedure for the named part.

Bold face number following part name refers to exploded view at beginning of subsection.

INTRODUCTION

GENERAL INFORMATION

The information and component/system descriptions contained in this manual are correct at time of publication. Bombardier Inc. however, maintains a policy of continuous improvement of its products without imposing upon itself any obligation to install them on products previously manufactured.

Due to late changes, it may have some differences between the manufactured product and the description and/or specifications in this document.

Bombardier Inc. reserves the right at any time to discontinue or change specifications, designs, features, models or equipment without incurring obligation.

ILLUSTRATIONS AND PROCEDURES

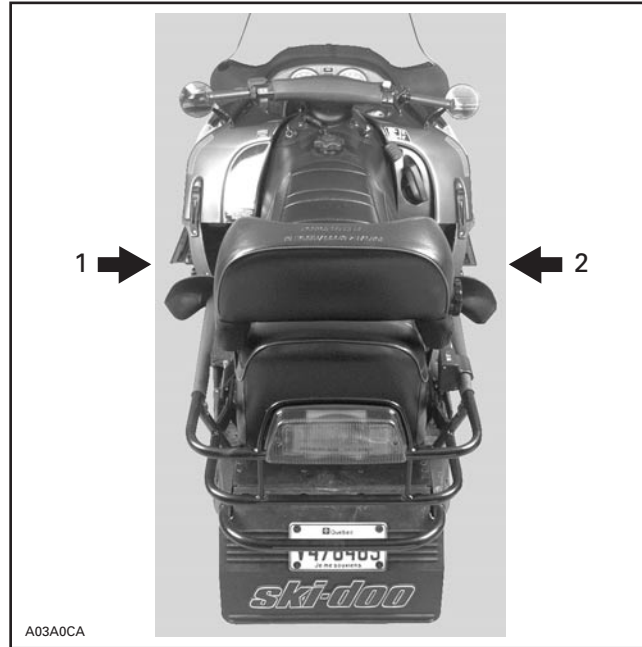
Illustrations and photos show the typical construction of the different assemblies and, in all cases, may not reproduce the full detail or exact shape of the parts shown. However, they represent parts which have the same or a similar function.

CAUTION: Most components of those vehicles are built with parts dimensioned in the metric system. Most fasteners are metric and must not be replaced by customary fasteners or vice-versa. Mismatched or incorrect fasteners could cause damage to the vehicle or possible personal injury.

As many of the procedures in this manual are interrelated, we suggest, that before undertaking any task, you read and thoroughly understand the entire section or subsection in which the procedure is contained.

A number of procedures throughout the book require the use of special tools. Before commencing any procedure, be sure that you have on hand all the tools required, or approved equivalents.

The use of RIGHT and LEFT indications in the text, always refers to driving position (when sitting on vehicle).



TYPICAL

1. Left
2. Right

SELF-LOCKING FASTENERS PROCEDURE

The following describes the most common application procedures when working with self-locking fasteners.

Use a metal brush or a tap to clean the hole properly then use a solvent (Methyl-Chloride), let act during 30 minutes and wipe off. The solvent utilization is to ensure the adhesive works properly.

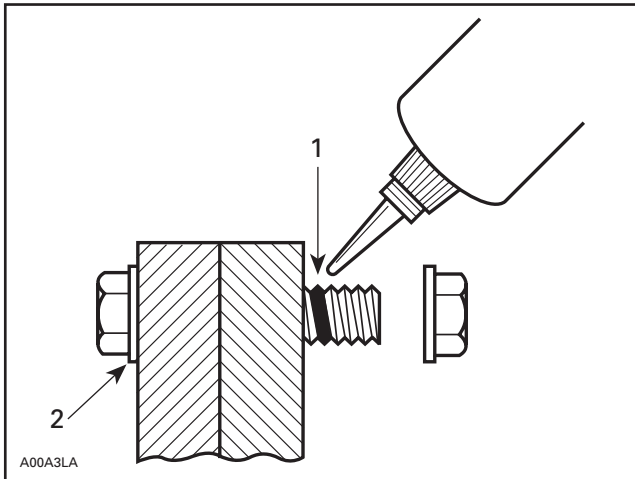
LOCTITE APPLICATION PROCEDURE

The following describes the most common application procedures when working with Loctite products.

NOTE: Always use proper strength Loctite product as recommended in this *Shop Manual*.

THREADLOCKER

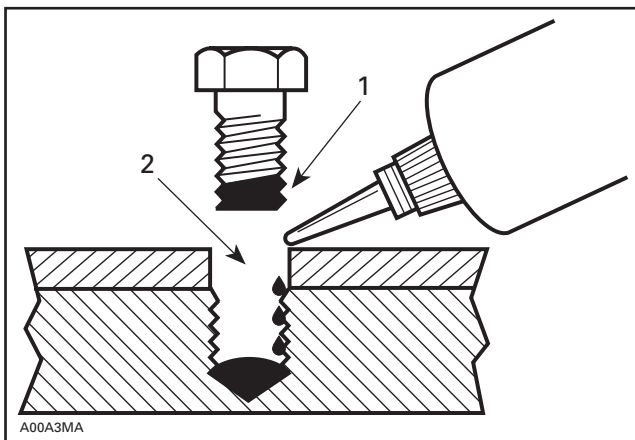
Uncovered Holes (bolts and nuts)



1. Apply here
2. Do not apply

1. Clean threads (bolt and nut) with solvent.
2. Apply Loctite Primer N (P/N 293 800 041) on threads and allow to dry.
3. Choose proper strength Loctite threadlocker.
4. Fit bolt in the hole.
5. Apply a few drops of threadlocker at proposed tightened nut engagement area.
6. Position nut and tighten as required.

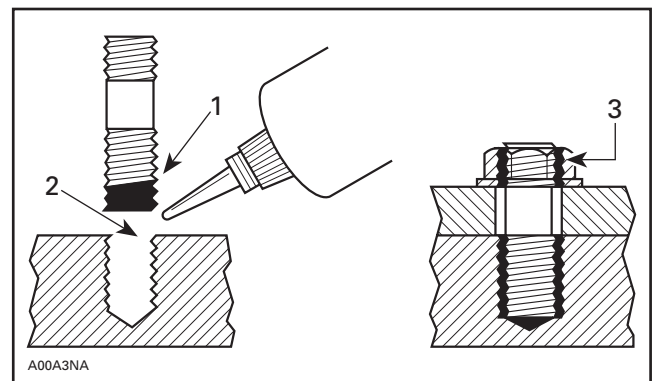
Blind Holes



1. On threads
2. On threads and at the bottom of hole

1. Clean threads (bolt and hole) with solvent.
2. Apply Loctite Primer N (P/N 293 800 041) on threads (bolt and nut) and allow to dry for 30 seconds.
3. Choose proper strength Loctite threadlocker.
4. Apply several drops along the threaded hole and at the bottom of the hole.
5. Apply several drops on bolt threads.
6. Tighten as required.

Stud in Blind Holes

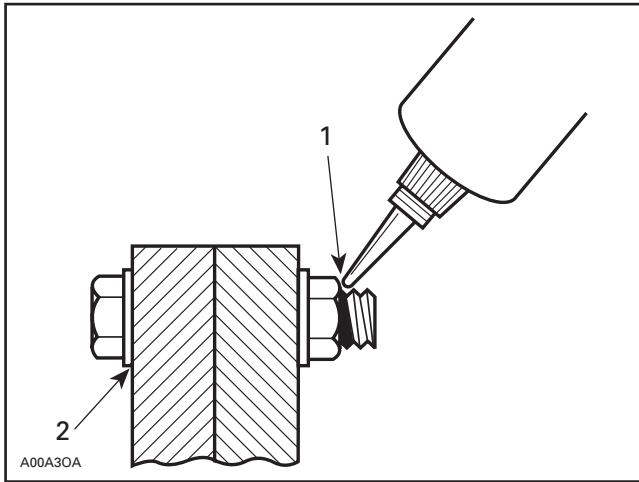


1. On threads
2. On threads and in the hole
3. Onto nut threads

1. Clean threads (stud and hole) with solvent.
2. Apply Loctite Primer N (P/N 293 800 041) on threads and allow to dry.
3. Put several drops of proper strength Loctite threadlocker on female threads and in hole.
4. Apply several drops of proper strength Loctite on stud threads.
5. Install stud.
6. Install cover, etc.
7. Apply drops of proper strength Loctite on uncovered threads.
8. Tighten nuts as required.

INTRODUCTION

Preassembled Parts

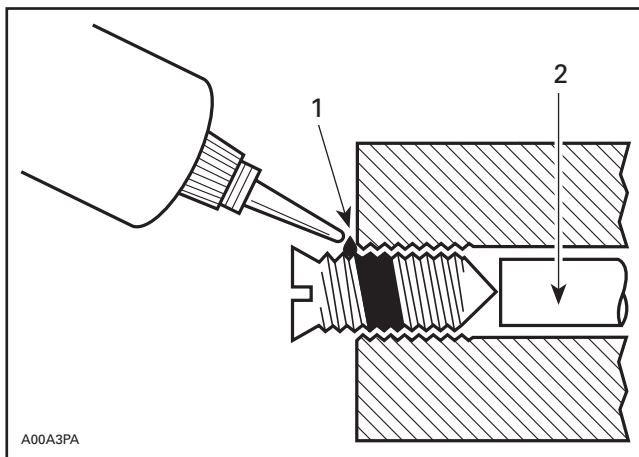


1. Apply here
2. Do not apply

1. Clean bolts and nuts with solvent.
2. Assemble components.
3. Tighten nuts.
4. Apply drops of proper strength Loctite on bolt/nut contact surfaces.
5. Avoid touching metal with tip of flask.

NOTE: For preventive maintenance on existing equipment, retighten nuts and apply proper strength Loctite on bolt/nut contact surfaces.

Adjusting Screw



1. Apply here
2. Plunger

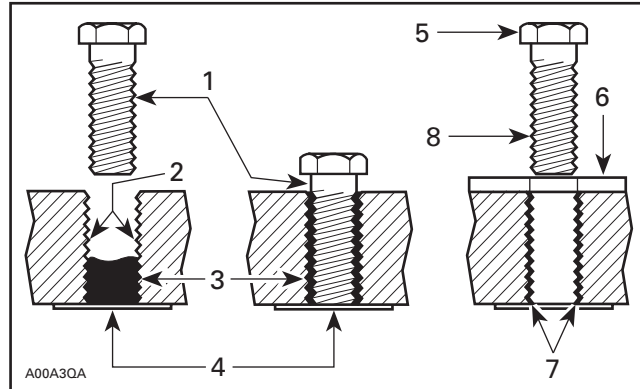
1. Adjust screw to proper setting.
2. Apply drops of proper strength Loctite threadlocker on screw/body contact surfaces.

3. Avoid touching metal with tip of flask.

NOTE: If it is difficult to readjust, heat screw with a soldering iron (232°C (450°F)).

STRIPPED THREAD REPAIR

Stripped Threads



1. Release agent
2. Stripped threads
3. Form-A-Thread
4. Tape
5. Cleaned bolt
6. Plate
7. New threads
8. Threadlocker

Standard Thread Repair

1. Follow instructions on Loctite FORM-A-THREAD 81668 package.
2. If a plate is used to align bolt:
 - a. Apply release agent on mating surfaces.
 - b. Put waxed paper or similar film on the surfaces.
3. Twist bolt when inserting it to improve thread conformation.

NOTE: NOT intended for engine stud repairs.

Repair of Small Holes/Fine Threads

Option 1: Enlarge damaged hole, then follow **Standard Thread Repair** procedure.

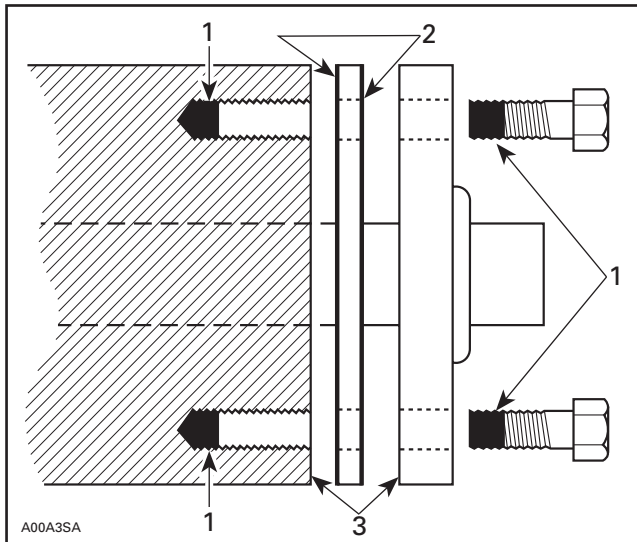
Option 2: Apply FORM-A-THREAD on the screw and insert in damaged hole.

Permanent Stud Installation (light duty)

1. Use a stud or thread on desired length.
2. DO NOT apply release agent on stud.
3. Do a **Standard Thread Repair**.
4. Allow to cure for 30 minutes.
5. Assemble.

GASKET COMPOUND

All Parts



1. Proper strength Loctite
2. Loctite Primer N (P/N 413 708 100) and Gasket Eliminator 515 (P/N 413 702 700) on both sides of gasket
3. Loctite Primer N only

1. Remove old gasket and other contaminants with Loctite Chisel remover (P/N 413 708 500). Use a mechanical mean if necessary.

NOTE: Avoid grinding.

2. Clean both mating surfaces with solvent.
3. Spray Loctite Primer N on both mating surfaces and on both sides of gasket. Allow to dry 1 or 2 minutes.
4. Apply GASKET ELIMINATOR 515 (P/N 413 702 700) on both sides of gasket, using a clean applicator.
5. Place gasket on mating surfaces and assemble immediately.

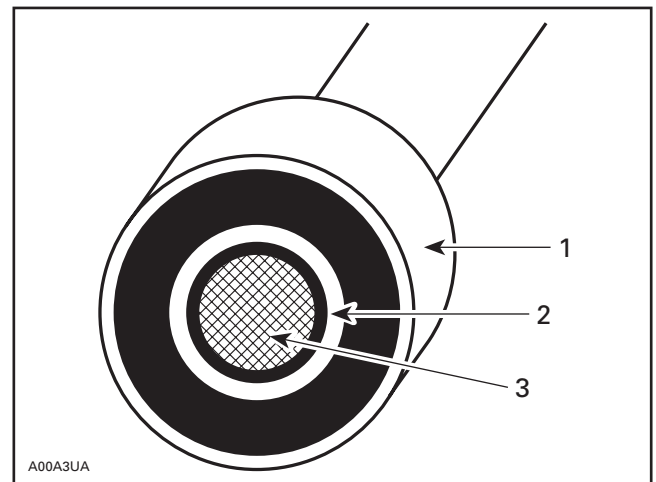
NOTE: If the cover is bolted to blind holes (above), apply proper strength Loctite in the hole and on threads. Tighten.

If holes are sunken, apply proper strength Loctite on bolt threads.

6. Tighten as usual.

MOUNTING ON SHAFT

Mounting with a Press



1. Bearing
2. Proper strength Loctite
3. Shaft

Standard

1. Clean shaft external part and element internal part.
2. Apply a strip of proper strength Loctite on shaft circumference at insert or engagement point.

NOTE: Retaining compound is always forced out when applied on shaft.

3. DO NOT use anti-seize Loctite or any similar product.
4. No curing period is required.

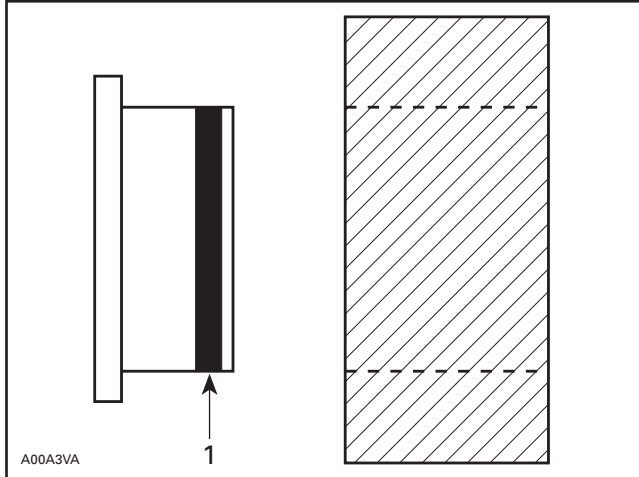
Mounting in Tandem

1. Apply retaining compound on internal element bore.
2. Continue to assemble as shown above.

INTRODUCTION

CASE-IN COMPONENTS

Metallic Gaskets



1. *Proper strength Loctite*

1. Clean inner housing diameter and outer gasket diameter.
2. Spray housing and gasket with Loctite Primer N (P/N 293 800 041).
3. Apply a strip of proper strength Loctite on leading edge of outer metallic gasket diameter.

NOTE: Any Loctite product can be used here. A low strength liquid is recommended as normal strength and gap are required.

4. Install according to standard procedure.
5. Wipe off surplus.
6. Allow it to cure for 30 minutes.

NOTE: Normally used on worn-out housings to prevent leaking or sliding.

It is generally not necessary to remove gasket compound applied on outer gasket diameter.

TIGHTENING TORQUES

WARNING

Torque wrench tightening specifications must strictly be adhered to.

Locking devices (ex.: locking tabs, elastic stop nuts, self-locking fasteners, etc.) must be installed or replaced with new ones where specified. If the efficiency of a locking device is impaired, it must be renewed.

Tighten fasteners to torque mentioned in exploded views and text. When they are not specified refer to following table. Bold face size (e.g. **M4**) indicates nominal value (mean value).

N•m	FASTENER SIZE (8.8 grade)	Lbf•in
2	M4	18
3	M4	27
4	M5	35
8	M6	71
9	M6	80
10	M6	89
11	M6	97
12	M6	106

N•m	FASTENER SIZE (8.8 grade)	Lbf•ft
21	M8	15
22	M8	16
23	M8	17
24	M8	18
25	M8	18
43	M10	32
44	M10	32
45	M10	33
46	M10	34
47	M10	35
48	M10	35
49	M10	36
50	M10	37
51	M10	38
52	M10	38

N•m	FASTENER SIZE (8.8 grade)	Lbf•ft
53	M10	39
76	M12	56
77	M12	57
78	M12	58
79	M12	58
80	M12	59
81	M12	60
82	M12	60
83	M12	61
84	M12	62
121	M14	89
122	M14	90
123	M14	91
124	M14	91
125	M14	92
126	M14	93
127	M14	94
128	M14	94
129	M14	95
130	M14	96
131	M14	97
132	M14	97
133	M14	98
134	M14	99
135	M14	100
136	M14	100
137	M14	101
138	M14	102
139	M14	103
140	M14	103
141	M14	104
142	M14	105
143	M14	105
144	M14	106
145	M14	107
146	M14	108
147	M14	108
148	M14	109
149	M14	110
150	M14	111

Bombardier SERVICE PUBLICATIONS REPORT

Publication title and year _____ Page _____

Machine _____ Report of error Suggestion

We would be pleased if you could communicate to Bombardier any suggestions you may have concerning our publications.

Name _____

Address _____

City and State/Prov. _____ Date _____

Zip code/Postal code _____

Bombardier SERVICE PUBLICATIONS REPORT

Publication title and year _____ Page _____

Machine _____ Report of error Suggestion

Name _____

Address _____

City and State/Prov. _____ Date _____

Zip code/Postal code _____

Bombardier SERVICE PUBLICATIONS REPORT

Publication title and year _____ Page _____

Machine _____ Report of error Suggestion

Name _____

Address _____

City and State/Prov. _____ Date _____

Zip code/Postal code _____



AFFIX
PROPER
POSTAGE



BOMBARDIER
RECREATIONAL PRODUCTS

Technical Publications
After Sales Service
565 de la Montagne Street
Valcourt, Quebec, Canada J0E 2L0

AFFIX
PROPER
POSTAGE



BOMBARDIER
RECREATIONAL PRODUCTS

Technical Publications
After Sales Service
565 de la Montagne Street
Valcourt, Quebec, Canada J0E 2L0

AFFIX
PROPER
POSTAGE



BOMBARDIER
RECREATIONAL PRODUCTS

Technical Publications
After Sales Service
565 de la Montagne Street
Valcourt, Quebec, Canada J0E 2L0