

ski-doo®

Effective December 19th, 2001
En vigueur le 19 décembre 2001

Subject to review from time to time, without notice or delay.
Sujet à révision sans préavis, ni délais.

2002

**Flat Rate
Time Schedule**

**Barème de temps
à taux fixe**

Volume 3

MX Z

600 X
600 X R
600 ADRENALINE R
600 RENEGADE R
600 SPORT
600 SPORT R
600 TRAIL

Legend

600 SE
600 GS
600 SPORT

Grand Touring

600 SE
600 GS
600 SPORT

Skandic

600 WT

Summit

600 SPORT
600 SPORT R

®™ Trademarks of Bombardier Inc. or its subsidiaries.
© 2002 Bombardier Inc. All rights reserved.
Printed in Canada.

®™ Marques de commerce Bombardier Inc. ou de ses filiales.
© 2002 Bombardier Inc. Tous droits réservés.
Imprimé au Canada.



INTRODUCTION

This publication governs all warranty labor allowances for 2002 Bombardier Snowmobiles.

1. HOW DOES IT WORK

We follow the procedures detailed in the Bombardier *Snowmobiles Shop Manual*. The flat rate time is the maximum time allowed for a repair involving any given part. **FLAT RATE TIME IS NOT CUMULATIVE.** You must use the flat rate time given for the longest lasting operation.

NOTE: The *Flat Rate Time Schedule* was prepared by skilled mechanics using the hand tool usually found in workshops and all the special tools mentioned in the *Shop Manual*.

2. COMPILATION

The *Flat Rate Time Schedule* is compiled as follows:

The actual required time to perform the repair plus (+) 30% correction factor up to 3.0 hours or (+) 15% over 3.0 hours time to take into account, among others:

- vehicle handling
- obtaining the parts
- diagnosis
- cleaning
- special compensation (rusted bolts).

3. HOW TO USE IT

Refer to the system you need, locate part of series of parts replaced. List JOB CODE in the appropriate column on claim.

| SYSTEM | | PAGE |
|--------|-------------------------------------|------|
| 01 | ENGINE | 4 |
| 02 | CARBURETOR AND OIL INJECTION SYSTEM | 8 |
| 03 | IGNITION SYSTEM | 12 |
| 04 | STARTER | 14 |
| 05 | TRANSMISSION SYSTEM | 16 |
| 06 | BRAKE SYSTEM | 21 |

| SYSTEM | | PAGE |
|--------|--------------------------------------|------|
| 07 | STEERING SYSTEM AND FRONT SUSPENSION | 23 |
| 08 | REAR SUSPENSION AND TRACK | 27 |
| 09 | BODY | 34 |
| 10 | ELECTRICAL SYSTEM | 37 |
| 11 | CLAIM TYPE 02 | 38 |

NOTE: Unless otherwise specified, dismantling order is: top to bottom, exterior to interior, front to rear.

All fractions of hours are in tenths:

0.1 = 6 minutes

0.2 = 12 minutes, and so on

LEGEND:

* REQUIRES PRIOR AUTHORIZATION BY DISTRIBUTOR.

** INDICATE LABOUR TIME ON LINE "LABOUR ONLY" OF CLAIM.

*** INDICATE \$\$\$ AMOUNT ON "SUB-CONTRACTED LABOUR" OF CLAIM.

IMPORTANT: Always use the longest flat rate time applicable to the repair performed.

4. JOB REQUIREMENTS

All the flat rate times mentioned in the following pages include the required operations such as: engine timing (rotary valve and ignition), connecting rod(s) alignment, cylinder head(s) torque or use of parallel bar, use of ignition tester, piston clearance/ring end gap measurement, crankshaft to crankcase measurement, cylinder honing, engine leak test.

5. ILLUSTRATIONS

The illustrations contained in this manual do not necessarily show every components of a given system as *Parts Catalog* do. Their purpose is to facilitate recognition of parts related to a flat rate time. **Item numbers on illustrations correspond to the four digit Job Code.**

6. SUGGESTION (form request)

INTRODUCTION

Cette publication détermine le temps de main d'oeuvre couvert par la garantie pour les motoneiges Bombardier 2002.

1. UTILISATION DU MANUEL

En procédant de la façon indiquée dans le *Manuel de réparation motoneiges* Bombardier, chaque temps donné représente le maximum permis pour une réparation portant sur cette pièce. **LES TEMPS NE SONT PAS CUMULATIFS.** On doit inscrire le temps donné pour l'opération qui prend le plus de temps.

REMARQUE: Le *Barème de temps à taux fixe* a été préparé par des mécaniciens compétents utilisant les outils que l'on retrouve normalement dans les ateliers de réparation, en plus de tous les outils spéciaux mentionnés dans le *Manuel de réparation*.

2. COMPILATION

Le *Barème de temps à taux fixe* a été établi en compilant le temps nécessaire pour faire la réparation plus (+) un facteur de correction de 30% lorsqu'un travail dure 3.0 heures et moins, ou (+) 15% lorsqu'un travail dure plus de 3.0 heures. Cette compilation comprends, entre autres les étapes suivantes:

- manutention du véhicule
- nettoyage
- aller chercher les pièces, essais physique
- compensation spéciale (boulons rouillés)
- diagnostic.

3. UTILISATION DU BARÈME

Se reporter à la section désirée, repérer la pièce ou l'ensemble de pièces remplacées et inscrire le CODE DE TRAVAIL dans la colonne appropriée sur la formule de réclamation.

| SYSTÈME | PAGE | |
|---------|--|----|
| 01 | MOTEUR | 4 |
| 02 | CARBURATEUR ET SYSTÈME D'INJECTION D'HUILE | 8 |
| 03 | SYSTÈME D'ALLUMAGE | 12 |
| 04 | DÉMARREUR | 14 |
| 05 | SYSTÈME DE TRANSMISSION | 16 |
| 06 | SYSTÈME DE FREIN | 21 |

| SYSTÈME | PAGE | |
|---------|--|----|
| 07 | SYSTÈME DE DIRECTION ET SUSPENSION AVANT | 23 |
| 08 | SUSPENSION ARRIÈRE ET CHENILLE | 27 |
| 09 | CARROSSERIE | 34 |
| 10 | SYSTÈME ÉLECTRIQUE | 37 |
| 11 | RÉCLAMATION DE TYPE 02 | 38 |

REMARQUE: Sauf indication contraire, le démontage doit s'effectuer de haut en bas, de l'extérieur vers l'intérieur, de l'avant vers l'arrière.

Toutes les fractions d'heures sont exprimées en dixièmes:

0.1 = 6 minutes

0.2 = 12 minutes, et ainsi de suite

LÉGENDE:

* AUTORISATION REQUISE AVANT LE REMPLACEMENT.

** INSCRIRE LE TEMPS À LA LIGNE «MAIN D'OEUVRE SEULEMENT».

*** INSCRIRE LE MONTANT \$\$\$ À LA LIGNE «OUVRAGE SOUS-CONTRACTÉE».

IMPORTANT: Toujours utiliser le temps donné à l'opération qui nécessite le plus de temps.

4. TRAVAUX REQUIS

Tous les temps mentionnés dans les pages suivantes incluent les opérations telles que: réglage du moteur (valve rotative et allumage), alignement de la ou des bielles, couple de serrage de la ou des culasses ou l'utilisation de barres parallèles, utilisation du vérificateur d'allumage, mesure du jet des pistons/jeu en bout des segments, mesure de l'écart entre le vilebrequin et le carter, rectification du cylindre, vérification de fuite du moteur.

5. ILLUSTRATIONS

Contrairement aux *Catalogues de pièces*, les illustrations de ce manuel ne montrent pas nécessairement chacune des pièces qu'elles représentent, leur raison d'être étant plutôt de faciliter la reconnaissance des pièces reliées à un barème de temps à taux fixe. **Les numéros d'items sur les illustrations correspondent aux quatre derniers chiffres du code de travail.**

6. SUGGESTION DE CHANGEMENT (formulaire)

2002

LIQUID COOLED TWIN CYLINDERS- 2 CYLINDRES REFROIDIS PAR LIQUIDE

| TABLE | DESCRIPTION | MODEL/MODÈLE | ENGINE/MOTEUR | CHASSIS TYPE/ TYPE DE CHÂSSIS | REVERSE/ MARCHÉ ARRIÈRE | REAR SUSPENSION/ SUSPENSION ARR. | ELECT. STARTER/ DÉMARREUR ÉLECT. | DRIVE PULLEY/ POULIE MOTRICE | DRIVEN PULLEY/ POULIE MÈNÉE |
|-------|----------------------------------|-------------------------------------|---------------|----------------------------------|----------------------------|-------------------------------------|-------------------------------------|---------------------------------|--------------------------------|
| 14 | MX Z 600 X (CDN/US) | 1886/1887 1888/1889 1890/1891 | 593 | Zx-X | OPT | SC10-III | OPT | C.D T.R.A.C. | Formula |
| | MX Z 600 X (EUR) | 2126 | | | | | | | |
| | MX Z 600 X R (CDN/US) | 2184/2185 2186/2187 2188/2189 | 593 | Zx-X | R.E.R | SC10-III | OPT | C.D T.R.A.C. | HPV27 |
| | MX Z 600 ADRN R (CDN/US) | 1904/1905 1906/1907 | 593 | Zx | R.E.R | SC10-III | OPT | C.D T.R.A.C. | HPV27 |
| | MX Z 600 RENEG R (CDN/US) | 2005/2006 2007/2008 | 593 | Zx | R.E.R | SC10-III | OPT | C.D T.R.A.C. | HPV27 |
| 15 | MX Z 600 Sport (CDN/US) | 1924/1925 1926/1927 | 593 | Zx | OPT | SC10-III | OPT | C.D T.R.A.C. | Formula |
| | MX Z 600 Sport R (CDN/US) | 2112/2113 2114/2115 | 593 | Zx | R.E.R | SC10-III | OPT | C.D T.R.A.C. | HPV27 |
| | MX Z 600 Trail (CDN/US) | 1940/1941 1942/1943 | 593 | Zx | OPT | SC10-III | OPT | C.D T.R.A.C. | Formula |
| 16 | Legend 600 SE (CDN/US) | 2015/2016 2017/2018 | 593 | Zx | R.E.R | SC10-III | STD | C.D T.R.A.C. | HPV27 |
| | Legend 600 GS (CDN/US) | 2023/2024 2025/2026 | 593 | Zx | R.E.R | SC10-III | STD | C.D T.R.A.C. | HPV27 |
| 17 | Legend 600 Sport (CDN/US) | 2031/2032 2033/2034 | 593 | Zx | R.E.R | SC10-III | STD | C.D T.R.A.C. | HPV27 |
| 18 | Grand Touring 600 SE (CDN/US) | 2051/2052 2148/2149 | 593 | Zx | R.E.R | SC10-II LT | STD | C.D T.R.A.C. | HPV27 |
| | Grand Touring 600 SE (EUR) | 2138 | | | | | | | |
| | Grand Touring 600 GS (CDN/US) | 2075/2076 2077/2078 | | | | | | | |
| 19 | Grand Touring 600 Sport (CDN/US) | 2083/2084 2085/2086 | 593 | Zx | R.E.R | SC10-II LT | STD | C.D T.R.A.C. | HPV27 |
| 20 | Skandic 600 WT (CDN/US) | 2095/2096 | 593 | WT | MEC | ARTICUL SLIDE | STD | C.D T.R.A.C. | T-BUSHING |
| 21 | Summit 600 Sport (CDN/US) | 1985/1986 1987/1988 | 593 | Zx-X | OPT | SC10-M | OPT | C.D T.R.A.C. | Formula |
| | Summit 600 Sport R (CDN/US) | 1989/1990 1991/1992 | 593 | Zx-X | R.E.R | SC10-M | OPT | C.D T.R.A.C. | HPV27 |
| | Summit 600 Sport R (EUR) | 2133 | | | | | | | |

01 ENGINE MOTEUR

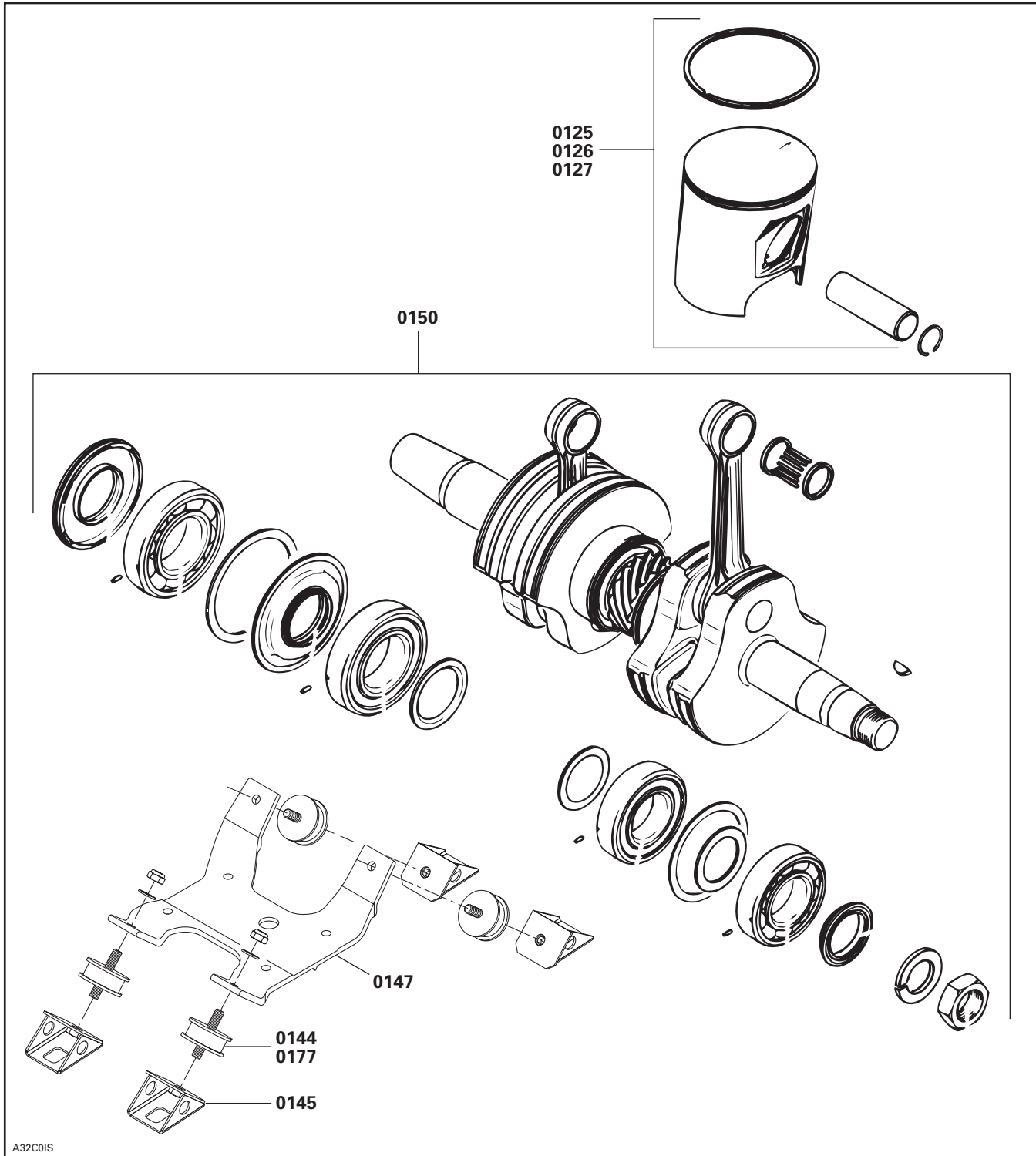
SYSTEM/SYSTÈME

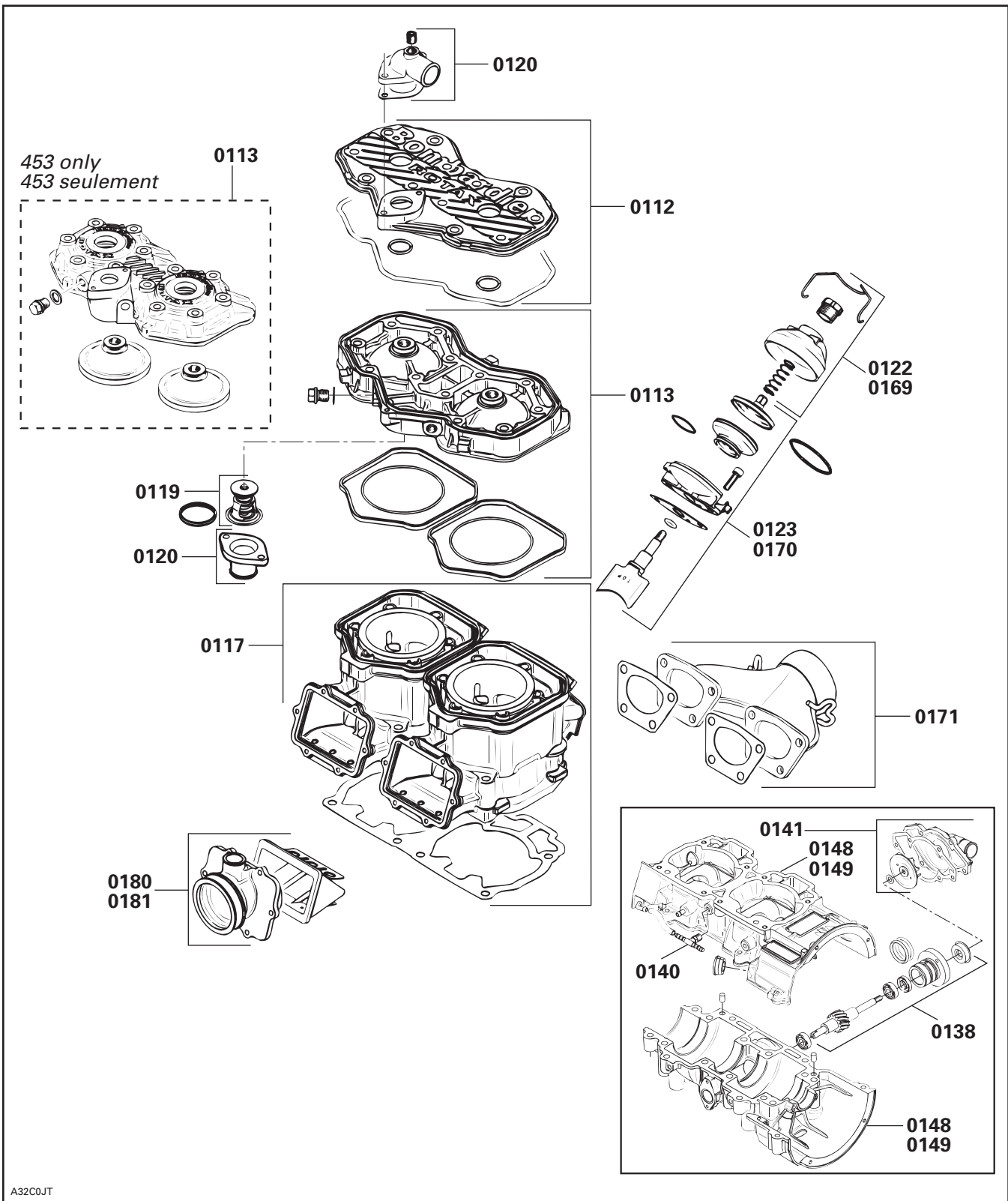
| SYSTEM SYSTÈME | CODE | DESCRIPTION | MX Z 600 ADRENALINE/RENEGADE | MX Z 600 SPORT MX Z 600 TRAIL | LEGEND 600 SE/GS | LEGEND 600 SPORT | GRAND TOURING 600 SE/GS | GRAND TOURING 600 SPORT | SKANDIC 600 WT | SUMMIT 600 SPORT |
|-------------------|------|-------------|---------------------------------|----------------------------------|---------------------|------------------|----------------------------|----------------------------|----------------|------------------|
| | | | 14 | 15 | 16 | 17 | 18 | 19 | 20 | 21 |

| | | | | | | | | | | |
|----|----|--|-----|-----|-----|-----|-----|-----|-----|-----|
| 01 | 00 | NO LABOR INVOLVED AUCUNE MAIN D'OEUVRE IMPLIQUÉE | | 0 | 0 | 0 | 0 | 0 | 0 | 0 |
| 01 | 01 | REMOVE AND REPLACE ENGINE ASS'Y REPLACEMENT MOTEUR COMPLET | 0 | 3.0 | 3.0 | 3.0 | 3.0 | 3.0 | 3.0 | 3.0 |
| 01 | 12 | CYLINDER HEAD COVER AND/OR GASKET COUVERCLE DE CULASSE ET/OU JOINT | 3.0 | 0.7 | 0.7 | 0.7 | 0.7 | 0.7 | 0.7 | 0.7 |
| 01 | 13 | CYLINDER HEAD AND/OR GASKET (1) CULASSE ET/OU JOINT (1) | 0.7 | 0.9 | 0.9 | 0.9 | 0.9 | 0.9 | 0.9 | 0.9 |
| 01 | 17 | CYLINDERS AND/OR GASKETS (all) CYLINDRES ET/OU JOINTS (tous) | 0.9 | 1.6 | 1.6 | 1.6 | 1.6 | 1.6 | 1.6 | 1.6 |
| 01 | 18 | COOLANT TEMPERATURE SENDER CAPTEUR DE TEMPÉRATURE LIQUIDE | 1.6 | 0.3 | 0.3 | 0.3 | 0.3 | 0.3 | 0.3 | 0.3 |
| 01 | 19 | THERMOSTAT THERMOSTAT | 0.3 | 0.3 | 0.3 | 0.3 | 0.3 | 0.3 | 0.3 | 0.3 |
| 01 | 20 | WATER OUTLET SOCKET TUBULURE DE SORTIE DE LIQUIDE | 0.3 | 0.7 | 0.7 | 0.7 | 0.7 | 0.7 | 0.7 | 0.7 |
| 01 | 22 | RAVE ADJUSTING SCREW AND/OR COVER AND/OR SPRING (1) VIS DE RÉGLAGE RAVE ET/OU COUVERCLE ET/OU RESSORT (1) | 0.7 | 0.3 | 0.3 | 0.3 | 0.3 | 0.3 | 0.3 | 0.3 |
| 01 | 23 | RAVE VALVE EXHAUST AND/OR HOUSING (1) SOUPAPE D'ÉCHAPPEMENT RAVE ET/OU BOÎTIER(1) | 0.3 | 0.3 | 0.3 | 0.3 | 0.3 | 0.3 | 0.3 | 0.3 |
| 01 | 25 | PISTON, PIN, CIRCLIP, RING (MAG) PISTON, AXE, FREIN D'AXE, SEGMENTS (MAG) | 0.3 | 1.8 | 1.8 | 1.8 | 1.8 | 1.8 | 1.8 | 1.8 |
| 01 | 26 | PISTON, PIN, CIRCLIP, RING (PTO) PISTON, AXE, FREIN D'AXE, SEGMENT (PDM) | 1.8 | 1.8 | 1.8 | 1.8 | 1.8 | 1.8 | 1.8 | 1.8 |
| 01 | 27 | PISTONS, PINS, CIRCLIPS, RINGS (MAG and PTO) PISTONS, AXES, FREINS, SEGMENTS (MAG et PDM) | 1.8 | 2.0 | 2.0 | 2.0 | 2.0 | 2.0 | 2.0 | 2.0 |
| 01 | 38 | WATER PUMP SHAFT (all parts) L'ARBRE DE LA POMPE À EAU (toutes pièces) | 2.0 | 5.0 | 5.0 | 5.0 | 5.0 | 5.0 | 5.0 | 5.0 |
| 01 | 40 | OIL LINE TUBE OR CHECK VALVE CONDUIT D'HUILE OU SOUPAPE DE RETENUE | 5.0 | 0.8 | 0.8 | 0.8 | 0.8 | 0.8 | 0.8 | 0.8 |
| 01 | 41 | WATER PUMP, IMPELLER, COVER AND/OR GASKET POMPE À EAU, CARTER DE POMPE, COUVERCLE ET/OU JOINT D'ÉTANCHÉITÉ | 0.8 | 0.9 | 0.9 | 0.9 | 0.9 | 0.9 | 0.9 | 0.9 |
| 01 | 44 | ENGINE RUBBER MOUNTS (3 or 4) TAMPONS D'ANCRAGE DE CAOUTCHOUC DU MOTEUR (3 ou 4) | 0.9 | 1.1 | 1.1 | 1.1 | 1.1 | 1.1 | 1.5 | 1.1 |
| 01 | 45 | ENGINE RUBBER MOUNTS SUPPORT (3 or 4) SUPPORTS DE TAMPONS D'ANCRAGE DE CAOUTCHOUC DU MOTEUR (3 ou 4) | 1.1 | 1.2 | 1.2 | 1.2 | 1.2 | 1.2 | 1.6 | 1.2 |
| 01 | 47 | ENGINE SUPPORT SUPPORT DE MOTEUR | 1.2 | 2.1 | 2.1 | 2.1 | 2.1 | 2.1 | 1.6 | 2.1 |
| 01 | 48 | CRANKCASE REPLACEMENT REPLACEMENT DU CARTER | 2.1 | 5.2 | 5.2 | 5.2 | 5.2 | 5.2 | 5.2 | 5.2 |

| SYSTEM SYSTÈME | CODE | DESCRIPTION | MX Z 600 ADRENALINE/RENEGADE | MX Z 600 SPORT MX Z 600 TRAIL | LEGEND 600 SE/GS | LEGEND 600 SPORT | GRAND TOURING 600 SE/GS | GRAND TOURING 600 SPORT | SKANDIC 600 WT | SUMMIT 600 SPORT |
|-------------------|------|-------------|---------------------------------|----------------------------------|---------------------|------------------|----------------------------|----------------------------|----------------|------------------|
| | | | 14 | 15 | 16 | 17 | 18 | 19 | 20 | 21 |

| | | | | | | | | | | |
|----|-----|--|-----|-----|-----|-----|-----|-----|-----|-----|
| 01 | 49 | CRANKCASE RESEAL AND/OR GASKET RECELLEMENT DU CARTER ET/OU JOINT | 5.0 | 5.0 | 5.0 | 5.0 | 5.0 | 5.0 | 5.0 | 5.0 |
| 01 | 50 | CRANKSHAFT AND/OR BEARINGS VILEBREQUIN ET/OU ROUEMENTS | 4.8 | 4.8 | 4.8 | 4.8 | 4.8 | 4.8 | 4.8 | 4.8 |
| 01 | 71 | EXHAUST MANIFOLD COLLECTEUR D'ÉCHAPPEMENT | 0.3 | 0.3 | 0.3 | 0.3 | 0.3 | 0.3 | 0.3 | 0.3 |
| 01 | 72 | TUNED PIPE TUYAU D'ÉCHAPPEMENT CALIBRÉ | 0.3 | 0.3 | 0.3 | 0.3 | 0.3 | 0.3 | 0.3 | 0.3 |
| 01 | 75 | MUFFLER AND/OR EXHAUST GROMMET/SUPPORT SILENCIEUX ET/OU BAGUE D'ÉCHAPPEMENT/SUPPORT | 0.3 | 0.3 | 0.3 | 0.3 | 0.3 | 0.3 | 0.3 | 0.3 |
| 01 | 77 | ENGINE RUBBER MOUNTS (1 or 2) TAMPONS D'ANCRAGE DU MOTEUR (1 ou 2) | 1.0 | 1.0 | 1.0 | 1.0 | 1.0 | 1.0 | 0.5 | 1.0 |
| 01 | 79 | COOLANT HOSE (tank to engine head) BOYAU DU SYSTÈME DE RÉFROIDISSEMENT (reserve au moteur) | 0.3 | 0.3 | 0.3 | 0.3 | 0.3 | 0.3 | 0.3 | 0.3 |
| 01 | 80 | REED VALVE ASS'Y AND/OR CARBURETOR SOCKET (1) SOUPAPE CLAPET COMPLÈTE ET/OU TUBULURE CARBURATEUR (1) | 0.3 | 0.3 | 0.3 | 0.3 | 0.3 | 0.3 | 0.3 | 0.3 |
| 01 | 81 | REED VALVE ASS'Y AND/OR CARBURETOR SOCKET (2) SOUPAPE CLAPET COMPLÈTE ET/OU TUBULURE CARBURATEUR (2) | 0.4 | 0.4 | 0.4 | 0.4 | 0.4 | 0.4 | 0.4 | 0.4 |
| 01 | 84 | TUNED PIPE SHIELD (1) COQUILLE TUYAU D'ÉCHAPPEMENT (1) | 0.3 | 0.3 | 0.3 | 0.3 | 0.3 | 0.3 | 0.3 | 0.3 |
| 01 | 98 | COOLANT RESERVOIR RÉSERVOIR D'ANTIGEL | 0.7 | 0.7 | 0.7 | 0.7 | 0.7 | 0.7 | 0.7 | 0.7 |
| 01 | 99 | CRANKSHAFT REBUILT VILEBREQUIN RÉUSINÉ | 4.8 | 4.8 | 4.8 | 4.8 | 4.8 | 4.8 | 4.8 | 4.8 |
| 01 | 104 | SHORT BLOCK KIT ENSEMBLE CARTER CYLINDRE | 3.5 | 3.5 | 3.5 | 3.5 | 3.5 | 3.5 | 3.5 | 3.5 |
| 01 | 169 | RAVE ADJUSTING SCREW AND/OR COVER AND/OR SPRING (2) VIS DE RÉGLAGE ET/OU COUVERCLE ET/OU RESSORT (2) | 0.4 | 0.4 | 0.4 | 0.4 | 0.4 | 0.4 | 0.4 | 0.4 |
| 01 | 170 | RAVE VALVE AND/OR HOUSING (2) SOUPAPE D'ÉCHAPPEMENT RAVE ET/OU BOÎTIER (2) | 0.4 | 0.4 | 0.4 | 0.4 | 0.4 | 0.4 | 0.4 | 0.4 |





CARBURETOR AND OIL INJECTION SYSTEM CARBURATEUR ET SYSTÈME D'INJECTION D'HUILE

| SYSTEM SYSTÈME | CODE | DESCRIPTION | MX Z 600 ADRENALINE/RENEGADE | MX Z 600 SPORT MX Z 600 TRAIL | LEGEND 600 SE/GS | LEGEND 600 SPORT | GRAND TOURING 600 SE/GS | GRAND TOURING 600 SPORT | SKANDIC 600 WT | SUMMIT 600 SPORT |
|-------------------|------|-------------|---------------------------------|----------------------------------|---------------------|------------------|----------------------------|----------------------------|----------------|------------------|
| | | | 14 | 15 | 16 | 17 | 18 | 19 | 20 | 21 |

| | | | | | | | | | | |
|----|----|--|-----|-----|-----|-----|-----|-----|-----|-----|
| 02 | 00 | NO LABOR INVOLVED AUCUNE MAIN-D'OEUVRE IMPLIQUÉE | 0 | 0 | 0 | 0 | 0 | 0 | 0 | 0 |
| 02 | 01 | AIR SILENCER ASS'Y (all parts) SILENCIEUX D'ADMISSION COMPLET (toutes pièces) | 0.2 | 0.2 | 0.2 | 0.2 | 0.2 | 0.2 | 0.2 | 0.2 |
| 02 | 02 | CARBURETORS ASS'Y (1) CARBURATEURS COMPLET (1) | | | | | | | 0.3 | |
| 02 | 03 | CARBURETORS ASS'Y (2) CARBURATEURS COMPLET (2) | 0.7 | 0.6 | 0.7 | 0.6 | 0.7 | 0.7 | 0.5 | 0.7 |
| 02 | 04 | RUBBER FLANGE (1) BRIDE DE CAOUTCHOUC (1) | 0.3 | 0.3 | 0.3 | 0.3 | 0.3 | 0.3 | 0.3 | 0.3 |
| 02 | 06 | THROTTLE CABLE CÂBLE D'ACCÉLÉRATEUR | 0.3 | 0.3 | 0.3 | 0.3 | 0.3 | 0.3 | 0.3 | 0.3 |
| 02 | 08 | OIL INJECTION PUMP POMPE À INJECTION D'HUILE | 1.1 | 1.1 | 1.1 | 1.1 | 1.1 | 1.1 | 1.1 | 1.1 |
| 02 | 09 | OIL INJECTION RESERVOIR RÉSERVOIR D'HUILE À INJECTION | 0.5 | 0.5 | 0.5 | 0.5 | 0.5 | 0.5 | 0.5 | 0.5 |
| 02 | 10 | FUEL PUMP POMPE À CARBURANT | 0.4 | 0.4 | 0.4 | 0.4 | 0.4 | 0.4 | 0.4 | 0.4 |
| 02 | 11 | FLOAT SYSTEM (all parts) (1 carburetor) SYSTÈME DE FLOTTEUR (toutes pièces) (1 carburateur) | 0.6 | 0.6 | 0.6 | 0.6 | 0.6 | 0.6 | 0.6 | 0.6 |
| 02 | 12 | FLOAT SYSTEM (all parts) (2 carburetors) SYSTÈME DE FLOTTEUR (toutes pièces) (2 carburateurs) | 0.7 | 0.7 | 0.7 | 0.7 | 0.7 | 0.7 | 0.7 | 0.7 |
| 02 | 13 | JET NEEDLE, THROTTLE SLIDE (1) AIGUILLE DE GICLEUR, TIROIR ACCÉLÉRATEUR (1) | 0.6 | 0.6 | 0.6 | 0.6 | 0.6 | 0.6 | 0.3 | 0.6 |
| 02 | 14 | JET NEEDLES, THROTTLES SLIDES (2) AIGUILLES DE GICLEUR, TIROIRS ACCÉLÉRATEUR (2) | 0.7 | 0.7 | 0.7 | 0.7 | 0.7 | 0.7 | 0.7 | 0.7 |
| ** | | CARBURETOR CLEANING AND REBUILDING (1) NETTOYAGE ET REMONTAGE DU CARBURATEUR (1) | 0.6 | 0.6 | 0.6 | 0.6 | 0.6 | 0.6 | 0.5 | 0.6 |
| ** | | CARBURETORS CLEANING AND REBUILDING (2) NETTOYAGE ET REMONTAGE DES CARBURATEURS (2) | 1.0 | 1.1 | 1.1 | 1.1 | 1.1 | 1.1 | 0.9 | 1.1 |
| 02 | 17 | MAIN JET, NEEDLE JET, PILOT JET (1) GICLEUR PRINCIPAL/AIGUILLE/RALENTI (1) | 0.6 | 0.6 | 0.6 | 0.6 | 0.6 | 0.6 | 0.4 | 0.6 |
| 02 | 18 | MAIN JETS, NEEDLE JETS, PILOT JETS (2) GICLEURS PRINCIPAUX/AIGUILLE/RALENTI (2) | 0.7 | 0.7 | 0.7 | 0.7 | 0.7 | 0.7 | 0.6 | 0.7 |
| 02 | 24 | OIL INJECTION FILTER FILTRE D'HUILE À INJECTION | 0.3 | 0.3 | 0.3 | 0.3 | 0.3 | 0.3 | 0.3 | 0.3 |
| 02 | 25 | OIL INJECTION LINE (1) BOYAU D'HUILE À INJECTION (1) | 0.8 | 0.8 | 0.8 | 0.8 | 0.8 | 0.8 | 0.8 | 0.8 |
| 02 | 26 | OIL INJECTION LINES (2) BOYAUX D'HUILE À INJECTION (2) | 0.9 | 0.9 | 0.9 | 0.9 | 0.9 | 0.9 | 0.9 | 0.9 |

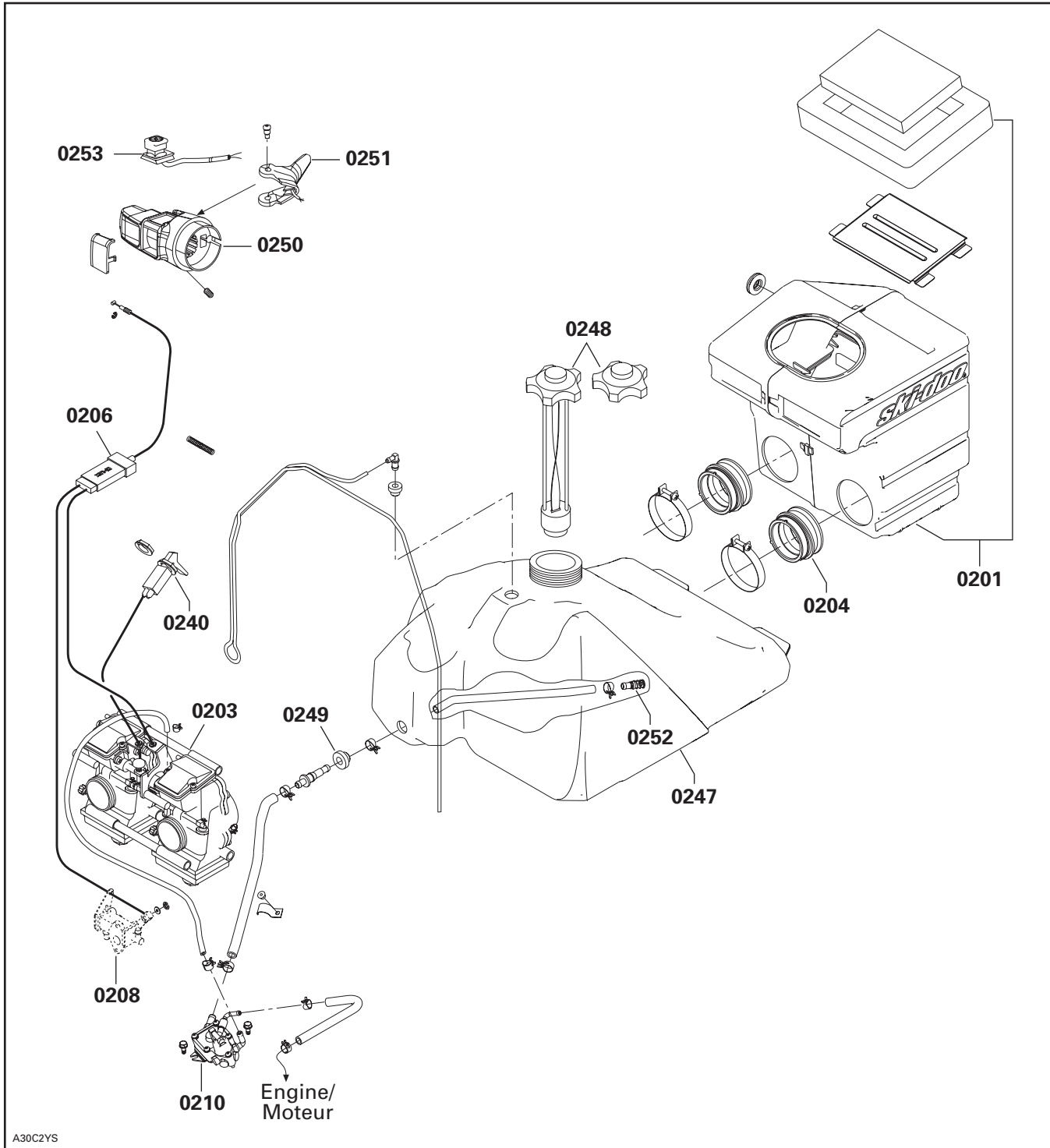
CARBURETOR AND OIL INJECTION SYSTEM CARBURATEUR ET SYSTÈME D'INJECTION D'HUILE

02

SYSTEM/SYSTÈME

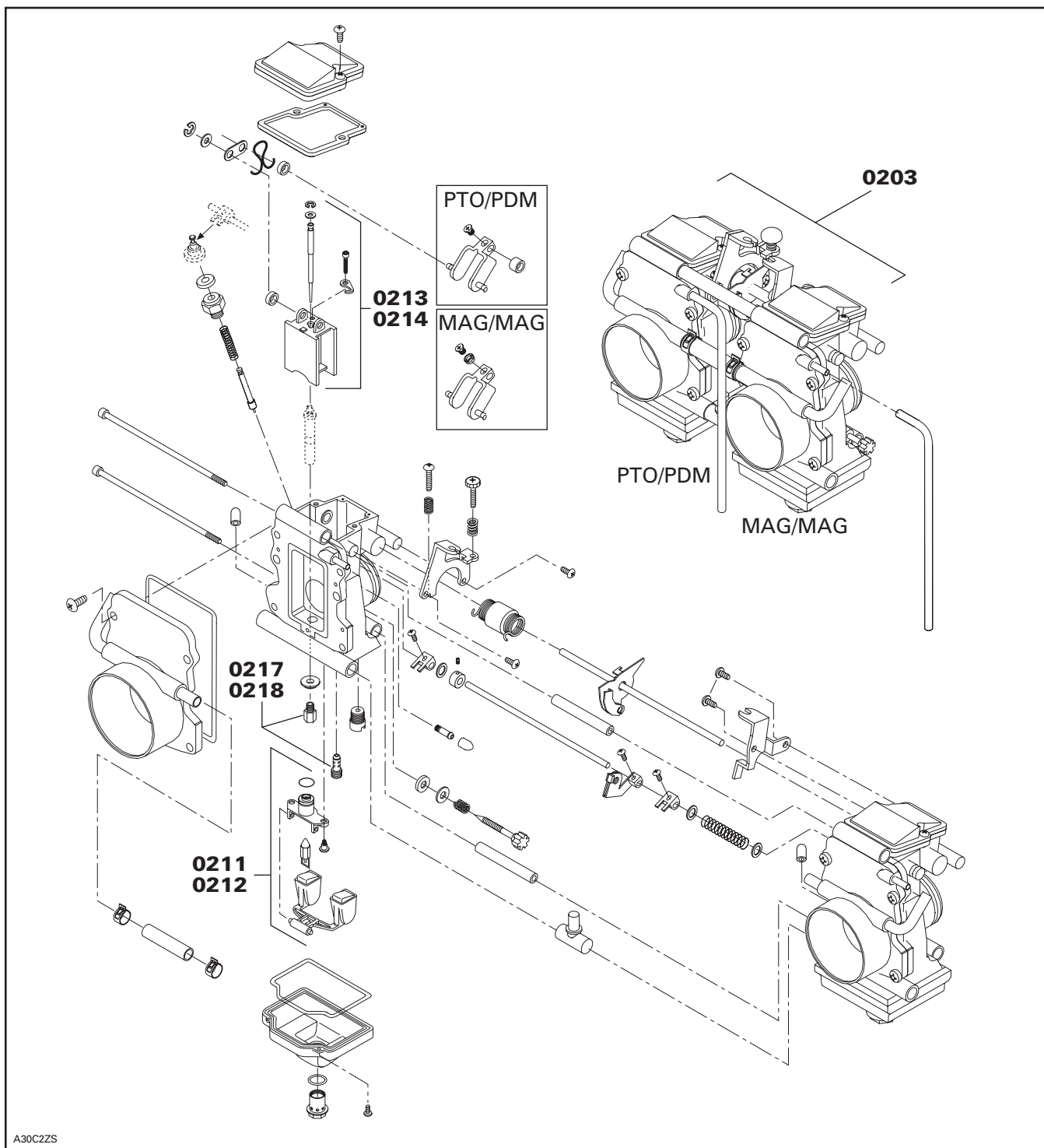
| SYSTEM SYSTÈME | CODE | DESCRIPTION | MX Z 600 ADRENALINE/RENEGADE | MX Z 600 SPORT MX Z 600 TRAIL | LEGEND 600 SE/GS | LEGEND 600 SPORT | GRAND TOURING 600 SE/GS | GRAND TOURING 600 SPORT | SKANDIC 600 WT | SUMMIT 600 SPORT |
|-------------------|------|--|---------------------------------|----------------------------------|---------------------|------------------|----------------------------|----------------------------|----------------|------------------|
| | | | 14 | 15 | 16 | 17 | 18 | 19 | 20 | 21 |
| 02 | 27 | OIL LEVEL SENSOR CONTACTEUR DE NIVEAU D'HUILE | 0.5 | 0.5 | 0.5 | 0.5 | 0.5 | 0.5 | 0.5 | 0.5 |
| 02 | 40 | CHOKE CABLE CÂBLE D'ÉTRANGLEUR | 0.3 | 0.3 | 0.3 | 0.3 | 0.3 | 0.3 | 0.3 | 0.3 |
| 02 | 43 | PRESSURE MANIFOLD ASS'Y (D.P.M) COLLECTEUR DE PRESSION COMPLET (D.P.M) | 0.4 | | 0.4 | | 0.4 | | | 0.4 |
| 02 | 45 | PRESSURE MANIFOLD HARNESS (D.P.M) CÂBLAGE COLLECTEUR DE PRESSION COMPLET (D.P.M) | 0.3 | | 0.3 | | 0.3 | | | 0.3 |
| 02 | 46 | AIR TEMPERATURE SENSOR (air intake) CAPTEUR D'AIR DE TEMPÉRATURE (silencieux d'admission) | 0.2 | | 0.2 | | 0.2 | | | 0.2 |
| 02 | 47 | FUEL TANK RÉSERVOIR À ESSENCE | 0.5 | 0.5 | 0.5 | 0.5 | 0.5 | 0.5 | 0.5 | 0.5 |
| 02 | 48 | FUEL TANK CAP BOUCHON DU RÉSERVOIR À ESSENCE | 0.1 | 0.1 | 0.1 | 0.1 | 0.1 | 0.1 | 0.1 | 0.1 |
| 02 | 49 | FUEL TANK GROMMET RONDELLE ISOLANTE DU RÉSERVOIR À ESSENCE | 0.5 | 0.5 | 0.5 | 0.5 | 0.5 | 0.5 | 0.5 | 0.5 |
| 02 | 50 | THROTTLE HANDLE HOUSING LOGEMENT DE MANETTE D'ACCÉLÉRATEUR | 0.4 | 0.4 | 0.4 | 0.4 | 0.4 | 0.4 | 0.4 | 0.4 |
| 02 | 51 | HEATER THROTTLE LEVER MANETTE D'ACCÉLÉRATEUR CHAUFFANTE | 0.3 | 0.3 | 0.3 | 0.3 | 0.3 | 0.3 | 0.3 | 0.3 |
| 02 | 52 | FUEL FILTER FILTRE À CARBURANT | 0.5 | 0.5 | 0.5 | 0.5 | 0.5 | 0.5 | 0.5 | 0.5 |
| 02 | 53 | KILL SWITCH INTERRUPTEUR D'URGENCE | 0.3 | 0.3 | 0.3 | 0.3 | 0.3 | 0.3 | 0.3 | 0.3 |
| 02 | 65 | FUEL SENSOR ASS'Y CAPTEUR DE NIVEAU D'ESSENCE COMPLET | | | 0.5 | | 0.5 | | | |

**CARBURETOR AND OIL INJECTION SYSTEM
CARBURATEUR ET SYSTÈME D'INJECTION D'HUILE**



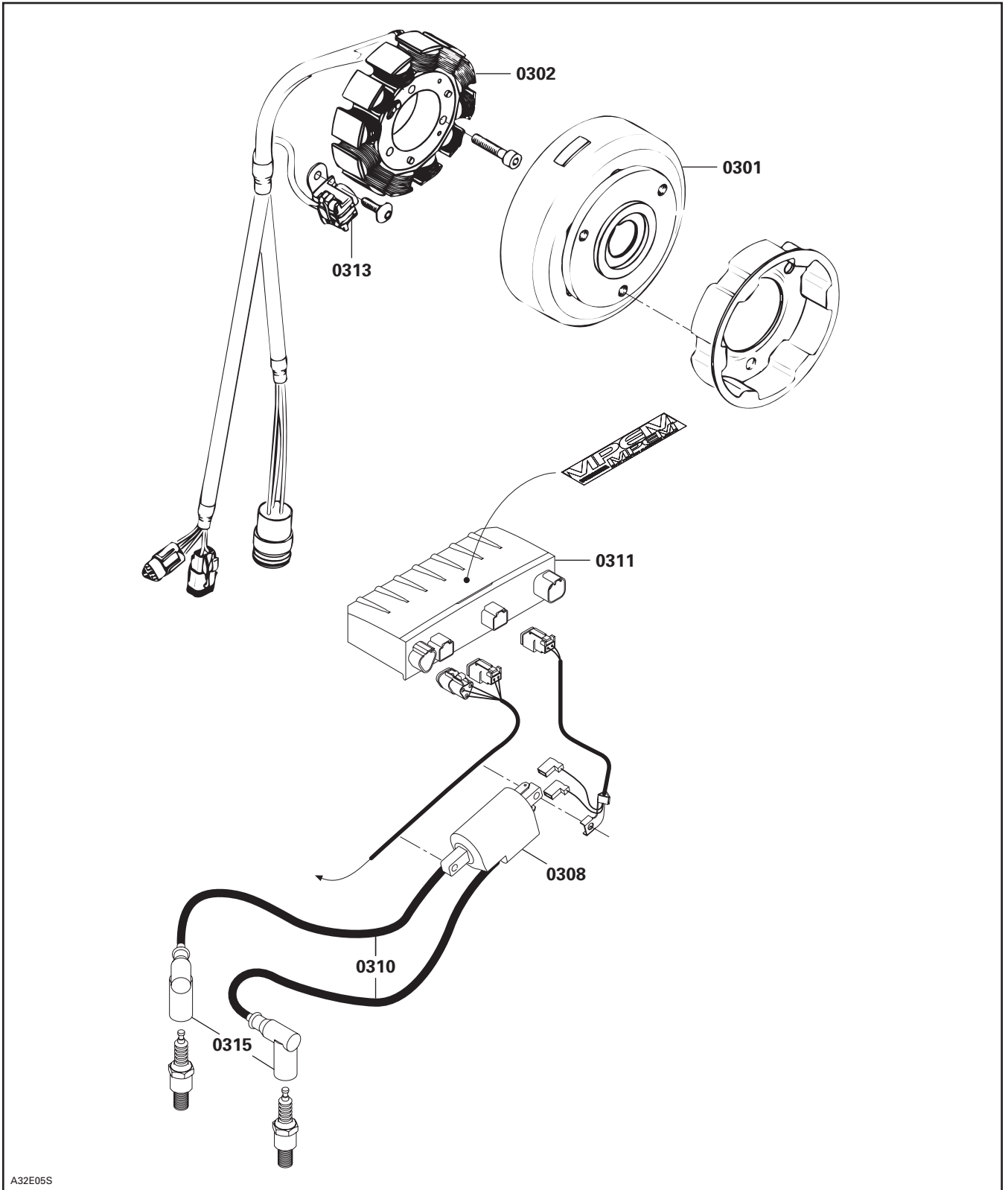
CARBURETOR AND OIL INJECTION SYSTEM CARBURATEUR ET SYSTÈME D'INJECTION D'HUILE

02
SYSTEM/SYSTÈME



| SYSTEM SYSTÈME | CODE | DESCRIPTION | MX Z 600 ADRENALINE/RENEGADE | MX Z 600 SPORT MX Z 600 TRAIL | LEGEND 600 SE/GS | LEGEND 600 SPORT | GRAND TOURING 600 SE/GS | GRAND TOURING 600 SPORT | SKANDIC 600 WT | SUMMIT 600 SPORT |
|-------------------|------|-------------|---------------------------------|----------------------------------|---------------------|------------------|----------------------------|----------------------------|----------------|------------------|
| | | | 14 | 15 | 16 | 17 | 18 | 19 | 20 | 21 |

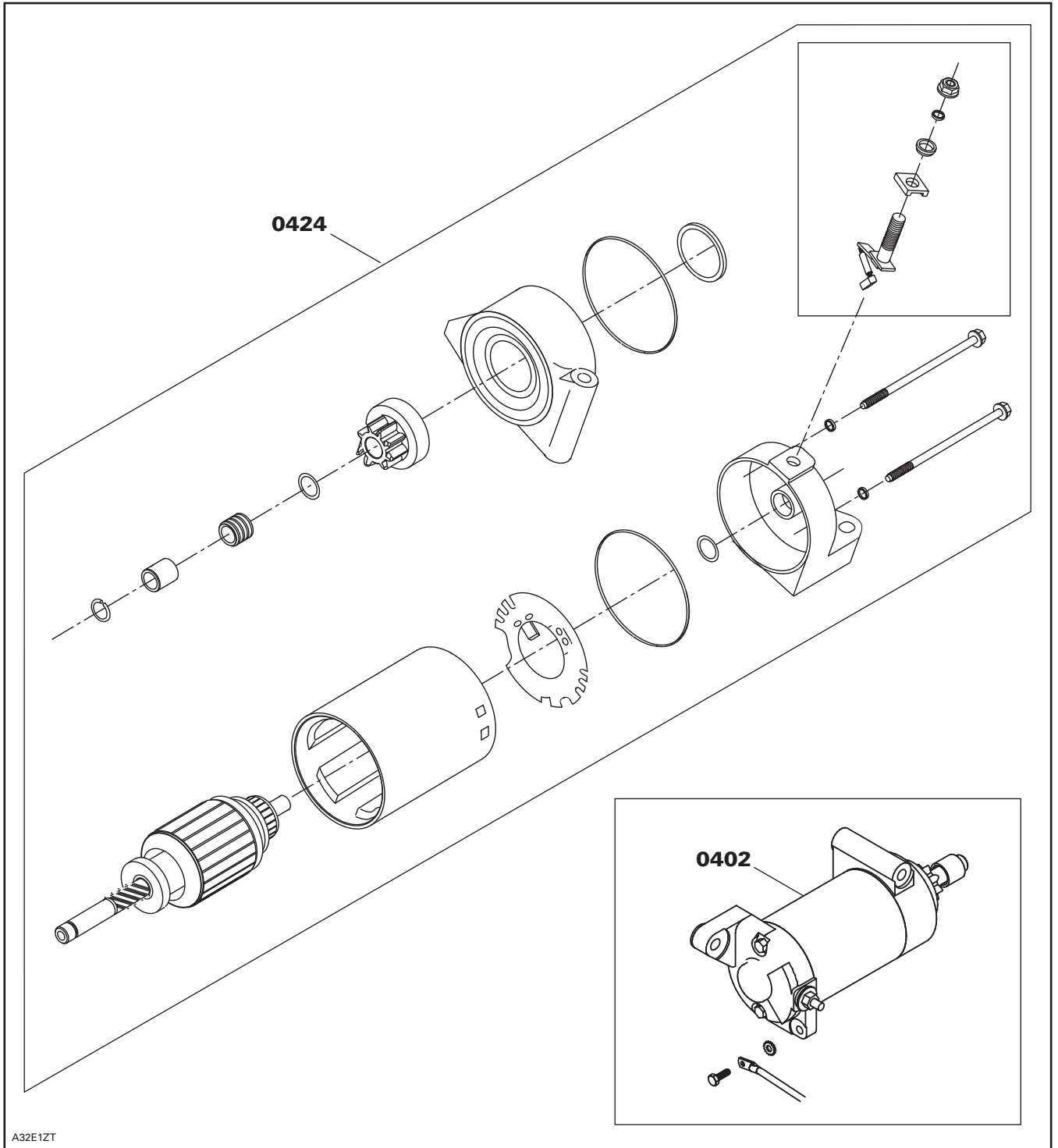
| | | | | | | | | | | |
|----|----|---|-----|-----|-----|-----|-----|-----|-----|-----|
| 03 | 00 | NO LABOR INVOLVED AUCUNE MAIN-D'OEUVRE IMPLIQUÉE | 0 | 0 | 0 | 0 | 0 | 0 | 0 | 0 |
| 03 | 01 | FLYWHEEL VOLANT MOTEUR | 0.3 | 0.3 | 0.3 | 0.3 | 0.3 | 0.3 | 0.3 | 0.3 |
| 03 | 02 | MAGNETO ASS'Y MAGNÉTO COMPLET | 0.6 | 0.6 | 0.6 | 0.6 | 0.6 | 0.6 | 0.6 | 0.6 |
| 03 | 08 | IGNITION COIL BOBINE D'ALLUMAGE | 0.3 | 0.3 | 0.3 | 0.3 | 0.3 | 0.3 | 0.3 | 0.3 |
| 03 | 10 | IGNITION CABLE CÂBLE D'ALLUMAGE | 0.3 | 0.3 | 0.3 | 0.3 | 0.3 | 0.3 | 0.3 | 0.3 |
| 03 | 11 | ELECTRONIC BOX BOÎTE ÉLECTRONIQUE | 0.3 | 0.3 | 0.3 | 0.3 | 0.3 | 0.3 | 0.3 | 0.3 |
| ** | | TIMING RÉGLAGE DE L'ALLUMAGE | 0.3 | 0.3 | 0.3 | 0.3 | 0.3 | 0.3 | 0.3 | 0.3 |
| 03 | 13 | TRIGGER COIL (1) BOBINE DE DÉCLENCHEMENT (1) | 0.6 | 0.6 | 0.6 | 0.6 | 0.6 | 0.6 | 0.6 | 0.6 |
| 03 | 15 | SPARK PLUG PROTECTOR PROTECTEUR DE BOUGIES | 0.1 | 0.1 | 0.1 | 0.1 | 0.1 | 0.1 | 0.1 | 0.1 |



A32E05S

| SYSTEM SYSTÈME | CODE | DESCRIPTION | MX Z 600 ADRENALINE/RENEGADE | MX Z 600 SPORT MX Z 600 TRAIL | LEGEND 600 SE/GS | LEGEND 600 SPORT | GRAND TOURING 600 SE/GS | GRAND TOURING 600 SPORT | SKANDIC 600 WT | SUMMIT 600 SPORT |
|-------------------|------|-------------|---------------------------------|----------------------------------|---------------------|------------------|----------------------------|----------------------------|----------------|------------------|
| | | | 14 | 15 | 16 | 17 | 18 | 19 | 20 | 21 |

| | | | | | | | | | | |
|----|----|---|-----|-----|-----|-----|-----|-----|-----|-----|
| 04 | 00 | NO LABOR INVOLVED AUCUNE MAIN-D'OEUVRE IMPLIQUÉE | 0 | 0 | 0 | 0 | 0 | 0 | 0 | 0 |
| 04 | 01 | REWIND STARTER (all parts) EXCEPT HANDLE DÉMARREUR À RAPPEL (toutes pièces) SAUF POIGNÉE | 0.3 | 0.3 | 0.3 | 0.3 | 0.3 | 0.3 | 0.3 | 0.3 |
| 04 | 02 | ELECTRIC STARTER ASS'Y DÉMARREUR ÉLECTRIQUE COMPLET | | | 0.4 | 0.4 | 0.4 | 0.4 | 1.4 | |
| 04 | 03 | STARTER RELAY SOLÉNOÏDE DE DÉMARRAGE | | | 0.4 | 0.4 | 0.4 | 0.4 | 1.4 | |
| 04 | 04 | STARTER HOUSING, LEVER, HOUSING BOÎTIER DÉMARREUR, LEVIER, BOÎTIER | | | | | | | 2.1 | |
| 04 | 05 | HOUSING, INSULATOR, BUSHING, BRUSHING, HOLDER BRUSHING BRUSH BOÎTER, ISOLANT, DOUILLE, BALAI, PORTE-BALAI | | | | | | | 2.1 | |
| 04 | 06 | STARTER BRAKET (MAG) PLAQUE DE FIXATION DE DÉMARREUR (MAG) | | | | | | | 1.4 | |
| 04 | 07 | STARTER SUPPORT (PTO) SUPPORT DE DÉMARREUR (P.D.M) | | | | | | | 1.4 | |
| 04 | 08 | STARTER CLUTCH SYSTÈME D'EMDRAYAGE | | | | | | | 1.8 | |
| 04 | 09 | REWIND STARTER HANDLE POIGNÉE DU DÉMARREUR À RAPPEL | 0.3 | 0.3 | 0.3 | 0.3 | 0.3 | 0.3 | 0.3 | 0.3 |
| 04 | 10 | CONNECTING FLANGE FLASQUE DE CONNECTION | 0.3 | 0.3 | 0.3 | 0.3 | 0.3 | 0.3 | 0.3 | 0.3 |
| 04 | 24 | ELECTRIC STARTER (one or all parts) DÉMARREUR ÉLECTRIQUE (une ou toutes les pièces) | | | 0.6 | 0.6 | 0.6 | 0.6 | | |



A32E1ZT

| SYSTEM SYSTÈME | CODE | DESCRIPTION | MX Z 600 ADRENALINE/RENEGADE | MX Z 600 SPORT MX Z 600 TRAIL | LEGEND 600 SE/GS | LEGEND 600 SPORT | GRAND TOURING 600 SE/GS | GRAND TOURING 600 SPORT | SKANDIC 600 WT | SUMMIT 600 SPORT |
|-------------------|------|-------------|---------------------------------|----------------------------------|---------------------|------------------|----------------------------|----------------------------|----------------|------------------|
| | | | 14 | 15 | 16 | 17 | 18 | 19 | 20 | 21 |

| | | | | | | | | | | |
|----|----|--|-----|-----|-----|-----|-----|-----|-----|-----|
| 05 | 00 | NO LABOR INVOLVED AUCUNE MAIN-D'OEUVRE IMPLIQUÉE | 0 | 0 | 0 | 0 | 0 | 0 | 0 | 0 |
| 05 | 01 | DRIVE PULLEY ASS'Y OR SLIDING FLANGE POULIE MOTRICE COMPLÈTE OU FLASQUE COULISSANTE | 0.3 | 0.3 | 0.3 | 0.3 | 0.3 | 0.3 | 0.3 | 0.3 |
| 05 | 06 | TRA GOVERNOR CUP AND/OR FIXED HALF CUVETTE DE RÉGULATEUR ET/OU PARTIE FIXE TRA | 0.3 | 0.3 | 0.3 | 0.3 | 0.3 | 0.3 | 0.3 | 0.3 |
| 05 | 07 | TRA RAMPS AND/OR ADJUSTMENT SCREW RAMPES TRA ET/OU VIS DE RÉGLAGE DE POULIE | 0.3 | 0.3 | 0.3 | 0.3 | 0.3 | 0.3 | 0.3 | 0.3 |
| 05 | 08 | TRA SPRING COVER AND/OR SPRING AND/OR BUSHING COUVERCLE DU RESSORT ET/OU RESSORT ET/OU DOUILLE TRA | 0.7 | 0.7 | 0.7 | 0.7 | 0.7 | 0.7 | 0.7 | 0.7 |
| 05 | 09 | TRA SLIDER SHOES AND/OR SPRINGS GLISSIÈRE ET/OU RESSORTS TRA | 0.3 | 0.3 | 0.3 | 0.3 | 0.3 | 0.3 | 0.3 | 0.3 |
| 05 | 10 | TRA SLIDING HALF, BUSHING AND/OR LEVER ASS'Y DEMI-POULIE COULISSANTE, DOUILLE ET/OU LEVIER COMPLET TRA | 0.5 | 0.5 | 0.5 | 0.5 | 0.5 | 0.5 | 0.5 | 0.5 |
| 05 | 11 | DRIVEN PULLEY FIXED HALF DEMI-POULIE MENÉE FIXE | 0.3 | 0.3 | 0.3 | 0.3 | 0.3 | 0.3 | 0.3 | 0.3 |
| 05 | 12 | DRIVEN PULLEY SLIDING HALF DEMI-POULIE MENÉE COULISSANTE | 0.3 | 0.3 | 0.3 | 0.3 | 0.3 | 0.3 | 0.3 | 0.3 |
| 05 | 13 | DRIVEN PULLEY CAM AND/OR SPRING CAME ET/OU RESSORT DE POULIE MENÉE | 0.3 | 0.3 | 0.3 | 0.3 | 0.3 | 0.3 | 0.3 | 0.3 |
| 05 | 14 | DRIVEN PULLEY SMALL BUSHING PETITE DOUILLE DE POULIE MENÉE | 0.6 | 0.6 | 0.6 | 0.6 | 0.6 | 0.6 | 0.6 | 0.6 |
| 05 | 15 | DRIVEN PULLEY LARGE BUSHING GROSSE DOUILLE DE POULIE MENÉE | 0.6 | 0.6 | 0.6 | 0.6 | 0.6 | 0.6 | 0.4 | 0.6 |
| 05 | 17 | COUNTERSHAFT BALL BEARING AND/OR FLANGE ROULEMENT À BILLE DE L'ARBRE DE RENVOI ET/OU FLASQUE | 0.4 | 0.4 | 0.4 | 0.4 | 0.4 | 0.4 | | 0.4 |
| 05 | 18 | COUNTERSHAFT ARBRE DE RENVOI | 1.0 | 1.0 | 1.0 | 1.0 | 1.0 | 1.0 | | 1.0 |
| 05 | 19 | DRIVE BELT AND/OR BELT GUARD COURROIE D'ENTRAÎNEMENT ET/OU GARDE-COURROIE | 1.0 | 1.0 | 1.0 | 1.0 | 0.1 | 0.1 | 0.1 | 0.1 |
| 05 | 20 | CHAINCASE SEAL AND/OR BEARING ANNEAU D'ÉTANCHÉITÉ DE CARTER ET/OU ROULEMENT | 1.4 | 1.4 | 1.4 | 1.4 | 1.4 | 1.4 | | 1.4 |
| 05 | 21 | CHAINCASE CARTER DE CHAÎNE | 2.0 | 1.8 | 2.0 | 2.0 | 2.0 | 2.0 | 1.4 | 1.8 |
| 05 | 22 | CHAINCASE COVER COUVERCLE DE CARTER DE CHAÎNE | 0.4 | 0.4 | 0.5 | 0.5 | 0.5 | 0.5 | 0.4 | 0.4 |
| 05 | 23 | CHAINCASE UPPER SPROCKET AND/OR CENTRAL SPROCKET PIGNON SUPÉRIEUR DE CARTER ET/OU PIGNON CENTRAL | 0.5 | 0.5 | 0.5 | 0.5 | 0.6 | 0.6 | 3.8 | 0.5 |
| 05 | 24 | CHAINCASE LOWER SPROCKET PIGNON INFÉRIEUR DE CARTER DE CHAÎNE | 0.4 | 0.4 | 0.6 | 0.6 | 0.6 | 0.6 | 4.3 | 0.4 |
| 05 | 25 | CHAINCASE DRIVE CHAIN CHAÎNE D'ENTRAÎNEMENT DE CARTER DE CHAÎNE | 0.4 | 0.4 | 0.6 | 0.6 | 0.6 | 0.6 | | 0.4 |
| 05 | 26 | CHAINCASE TENSIONERS TENDEURS DE CARTER DE CHAÎNE | 0.6 | 0.3 | 0.6 | 0.6 | 0.6 | 0.6 | | 0.3 |

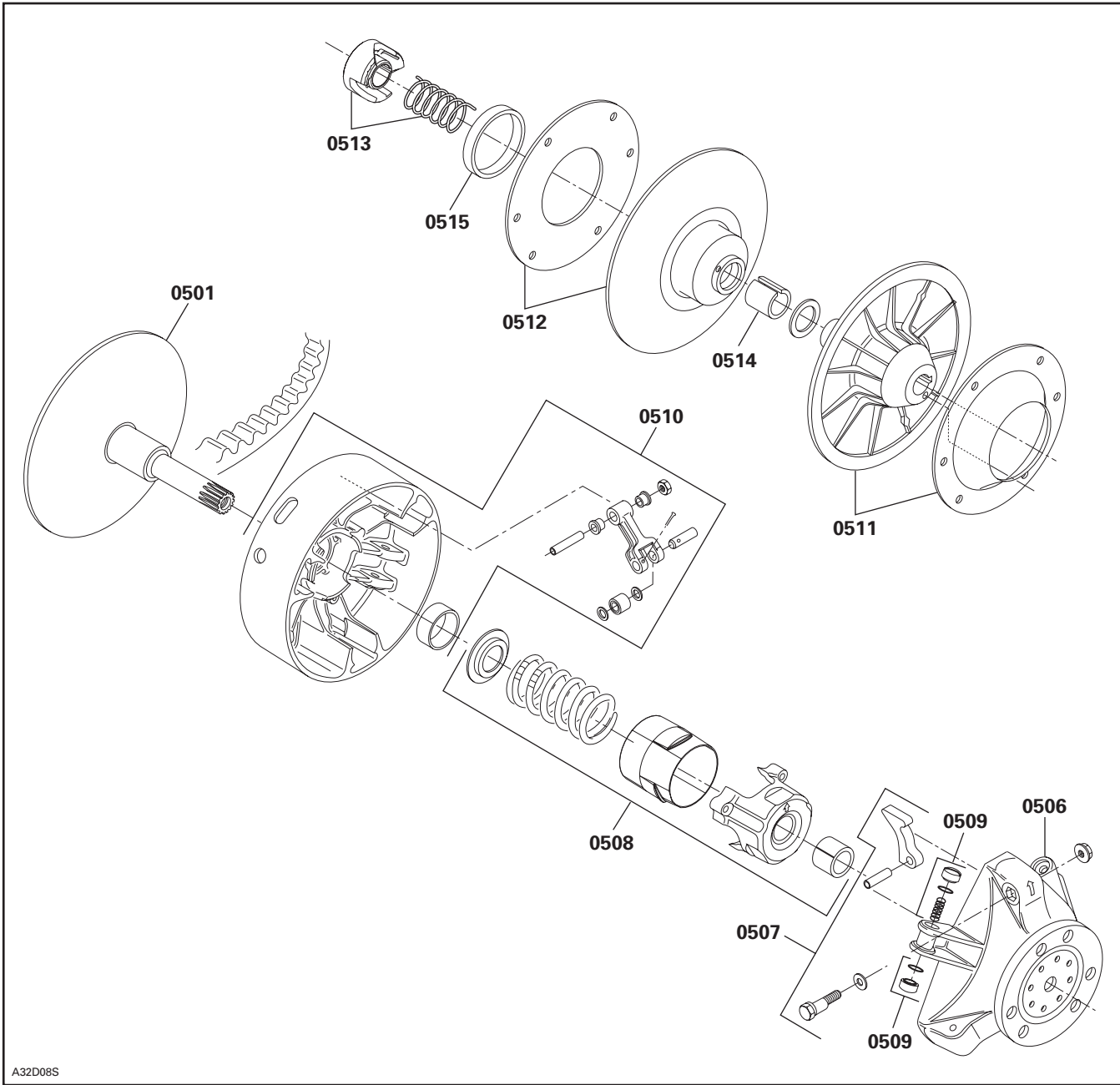
TRANSMISSION SYSTEM SYSTÈME DE TRANSMISSION

05

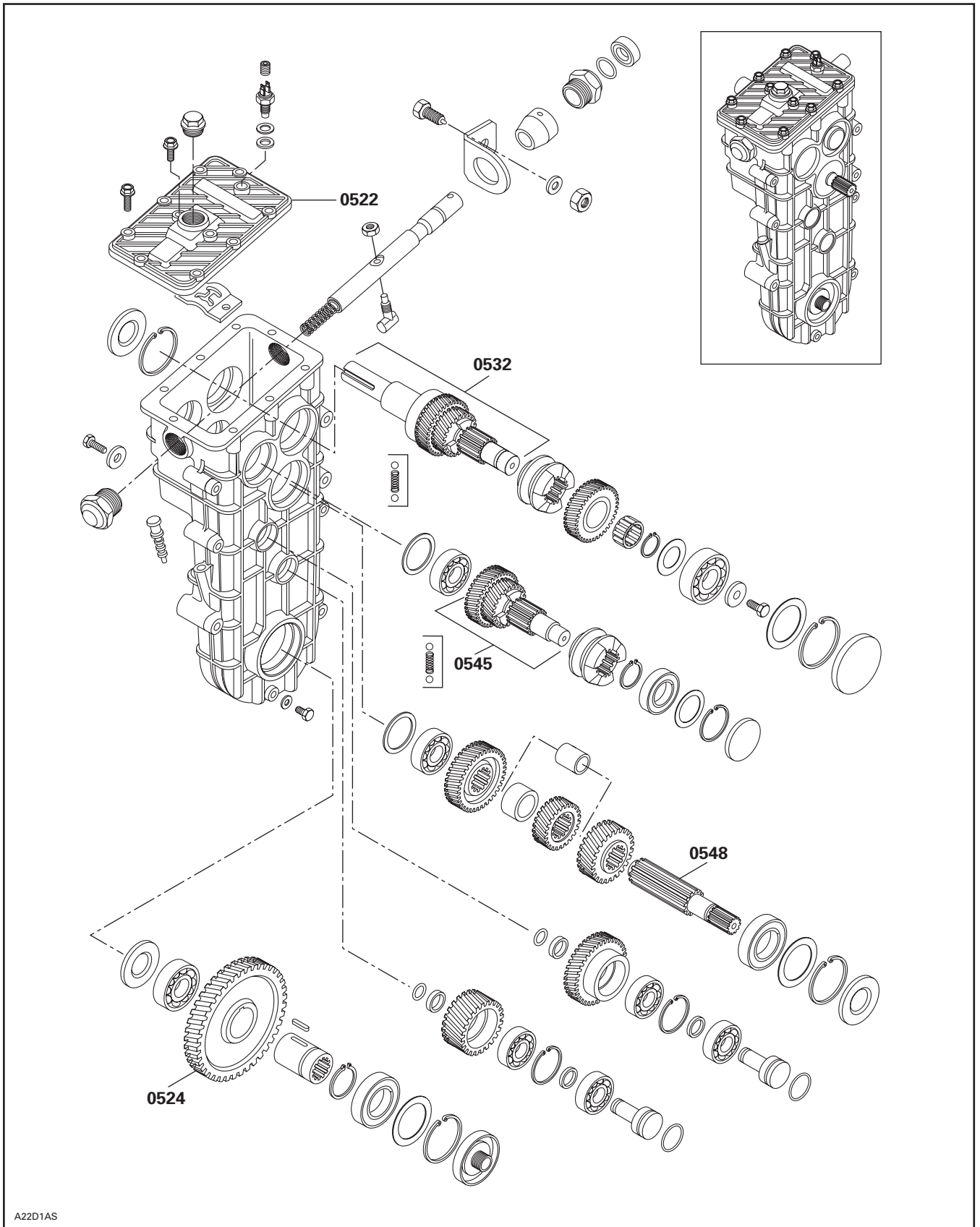
SYSTEM/SYSTÈME

| SYSTEM SYSTÈME | CODE | DESCRIPTION | MX Z 600 ADRENALINE/RENEGADE | MX Z 600 SPORT MX Z 600 TRAIL | LEGEND 600 SE/SS | LEGEND 600 SPORT | GRAND TOURING 600 SE/SS | GRAND TOURING 600 SPORT | SKANDIC 600 WT | SUMMIT 600 SPORT |
|-------------------|------|-------------|---------------------------------|----------------------------------|---------------------|------------------|----------------------------|----------------------------|----------------|------------------|
| | | | 14 | 15 | 16 | 17 | 18 | 19 | 20 | 21 |

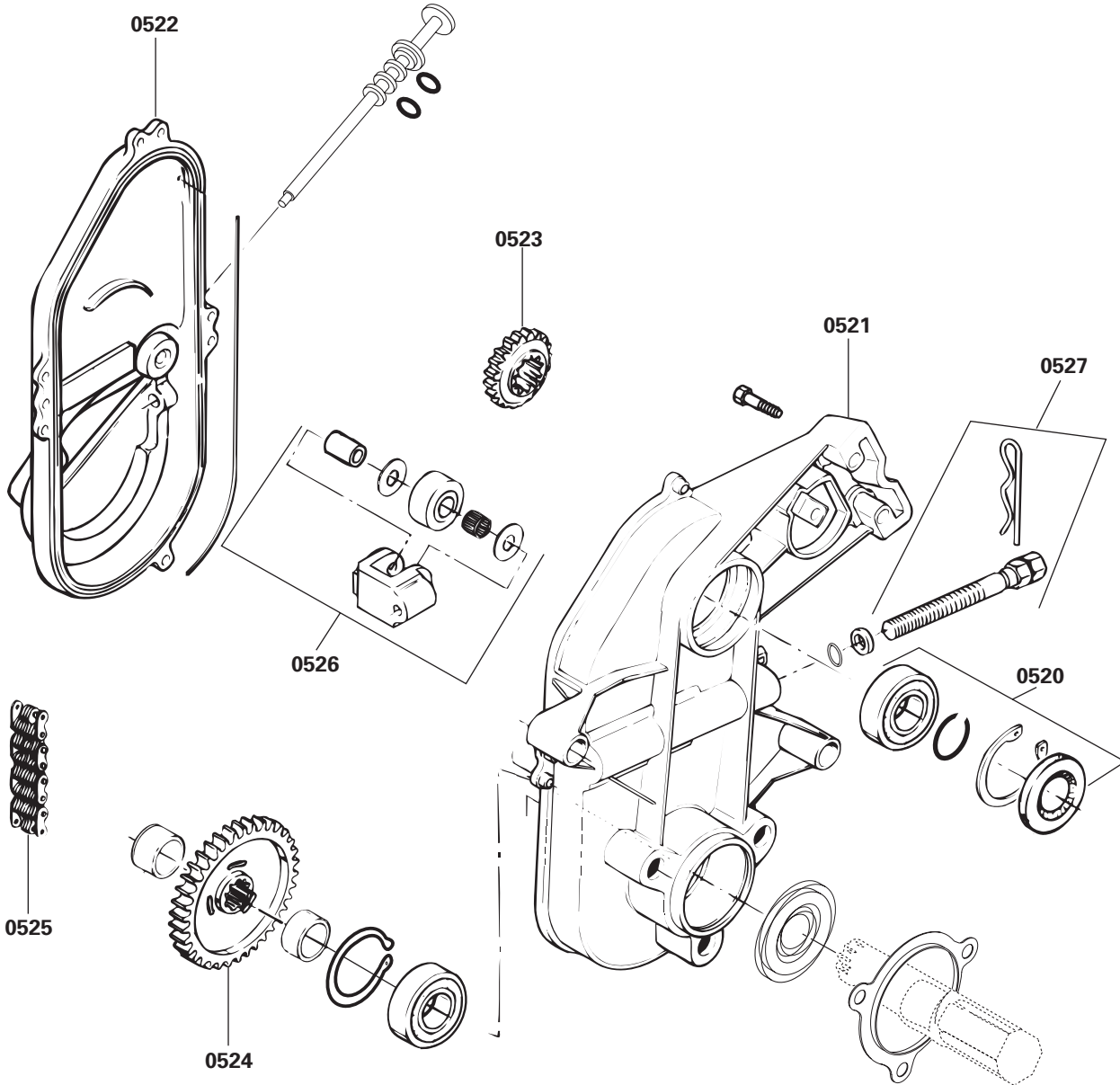
| | | | | | | | | | | |
|----|----|---|-----|-----|-----|-----|-----|-----|-----|-----|
| 05 | 27 | TENSIONER ADJUSTING SCREW VIS DE RÉGLAGE DE TENDEUR | 2.0 | 1.8 | 2.0 | 2.0 | 2.0 | 2.0 | | 1.8 |
| 05 | 32 | ROTAX TRANSMISSION LAY SHAFT GEAR ASS'Y PIGNON D'ARBRE INTERMÉDIAIRE DE TRANSMISSION | | | | | | | 3.0 | |
| 05 | 44 | RING GEAR COURONNE DE DÉMARRAGE | 0.4 | | | 0.4 | 0.4 | 0.4 | 0.4 | |
| 05 | 45 | REVERSE GEARWHEEL AND SHAFT ENGRENAGE ET ARBRE DE MARCHE ARRIÈRE | | | | | | | 2.5 | |
| 05 | 48 | CENTER SHAFT AXE CENTRAL | | | | | | | 3.5 | |



A32D08S

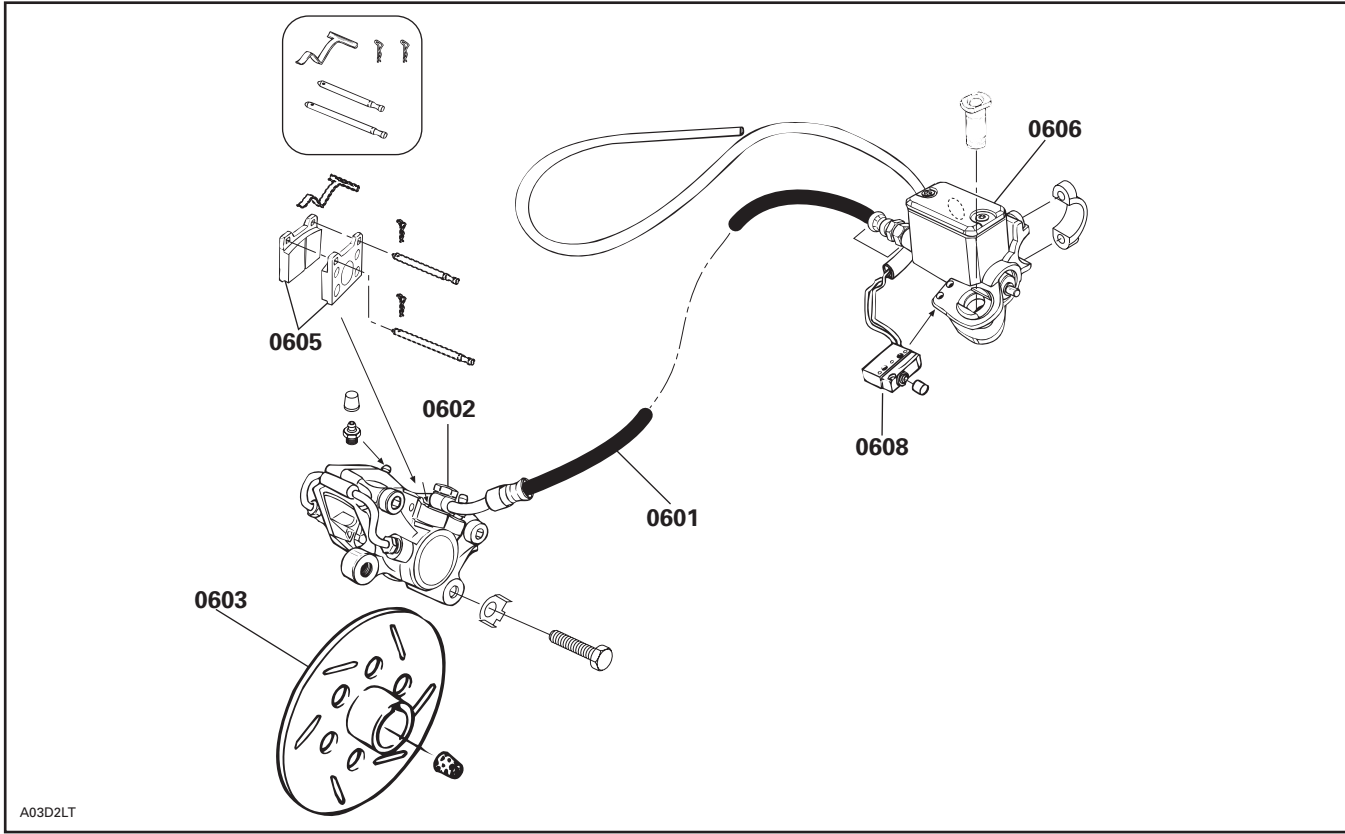


A22D1AS



A06D26T

| SYSTEM SYSTÈME | CODE | DESCRIPTION | MX Z 600 ADRENALINE/RENEGADE | MX Z 600 SPORT MX Z 600 TRAIL | LEGEND 600 SE/GS | LEGEND 600 SPORT | GRAND TOURING 600 SE/GS | GRAND TOURING 600 SPORT | SKANDIC 600 WT | SUMMIT 600 SPORT |
|-------------------|------|--|---------------------------------|----------------------------------|---------------------|------------------|----------------------------|----------------------------|----------------|------------------|
| | | | 14 | 15 | 16 | 17 | 18 | 19 | 20 | 21 |
| 06 | 00 | NO LABOR INVOLVED AUCUNE MAIN-D'OEUVRE IMPLIQUÉE | 0 | 0 | 0 | 0 | 0 | 0 | 0 | 0 |
| 06 | 01 | BRAKE OIL HOSE BOYAU À L'HUILE POUR FREIN | 0.7 | 0.7 | 0.7 | 0.7 | 0.7 | 0.7 | 0.7 | 0.7 |
| 06 | 02 | BRACKET, CALIPER, BRAKE PAD, RELEASE SPRING SUPPORT, ÉTRIER, PLAQUETTE, CLIQUET, LEVIER | 0.8 | 0.8 | 0.8 | 0.8 | 0.8 | 0.8 | 0.8 | 0.8 |
| 06 | 03 | DISC DISQUE | 1.2 | 1.2 | 1.2 | 1.2 | 1.2 | 1.2 | 1.2 | 1.2 |
| 06 | 05 | BRAKE PADS PLAQUETTES DE FREIN | 0.3 | 0.3 | 0.3 | 0.3 | 0.3 | 0.3 | 0.3 | 0.3 |
| 06 | 06 | MASTER CYLINDER MAÎTRE CYLINDRE | 1.2 | 1.2 | 1.2 | 1.2 | 1.2 | 1.2 | 1.2 | 1.2 |
| 06 | 07 | BRAKE LEVER ASS'Y LEVIER DE FREIN COMPLET | 0.3 | 0.3 | 0.3 | 0.3 | 0.3 | 0.3 | 0.3 | 0.3 |
| 06 | 08 | MICROSWITCH BRAKE ASS'Y INTERRUPTEUR MICRO-CONTACT DE FREIN COMPLET | 0.3 | 0.3 | 0.3 | 0.3 | 0.3 | 0.3 | 0.3 | 0.3 |



A03D2LT

STEERING SYSTEM AND FRONT SUSPENSION SYSTÈME DE DIRECTION ET SUSPENSION AVANT

07

SYSTEM/SYSTÈME

| SYSTEM SYSTÈME | CODE | DESCRIPTION | MX Z 600 ADRENALINE/RENEGADE | MX Z 600 SPORT MX Z 600 TRAIL | LEGEND 600 SE/GS | LEGEND 600 SPORT | GRAND TOURING 600 SE/GS | GRAND TOURING 600 SPORT | SKANDIC 600 WT | SUMMIT 600 SPORT |
|-------------------|------|-------------|---------------------------------|----------------------------------|---------------------|------------------|----------------------------|----------------------------|----------------|------------------|
| | | | 14 | 15 | 16 | 17 | 18 | 19 | 20 | 21 |

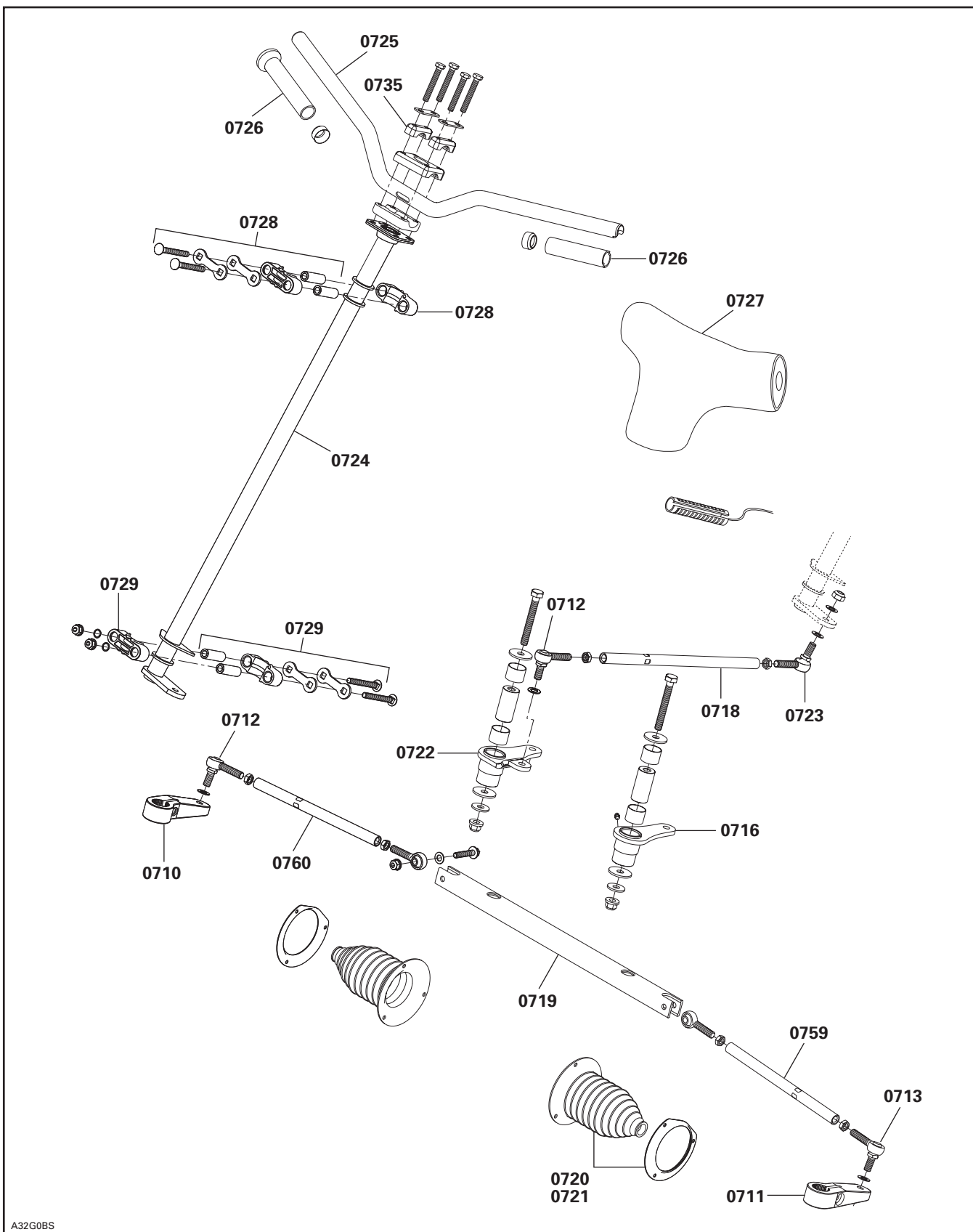
| | | | | | | | | | | |
|----|----|---|-----|-----|-----|-----|-----|-----|------|-----|
| 07 | 00 | NO LABOR INVOLVED AUCUNE MAIN-D'OEUVRE IMPLIQUÉE | 0 | 0 | 0 | 0 | 0 | 0 | 0 | 0 |
| 07 | 01 | SKI (1) SKI (1) | 0.3 | 0.3 | 0.3 | 0.3 | 0.3 | 0.3 | 0.3 | 0.3 |
| 07 | 02 | SKIS (2) SKIS (2) | 0.4 | 0.4 | 0.4 | 0.4 | 0.4 | 0.4 | 0.4 | 0.4 |
| 07 | 03 | SKI RUNNER LISSES | 0.3 | 0.3 | 0.3 | 0.3 | 0.3 | 0.3 | 0.3 | 0.3 |
| 07 | 08 | SKI LEG (RH) AND/OR BUSHING JAMBE DE SKI (D) ET/OU DOUILLE | 0.3 | 0.3 | 0.3 | 0.3 | 0.3 | 0.3 | 0.5 | 0.3 |
| 07 | 09 | SKI LEG (LH) AND/OR BUSHING JAMBE DE SKI (G) ET/OU DOUILLE | 0.3 | 0.3 | 0.3 | 0.3 | 0.3 | 0.3 | 0.4 | 0.3 |
| 07 | 10 | STEERING ARM (RH) BRAS DE DIRECTION (D) | 0.3 | 0.3 | 0.3 | 0.3 | 0.3 | 0.3 | 0.5 | 0.3 |
| 07 | 11 | STEERING ARM (LH) BRAS DE DIRECTION (G) | 0.3 | 0.3 | 0.3 | 0.3 | 0.3 | 0.3 | 0.4 | 0.3 |
| 07 | 12 | STEERING ARM BALL JOINT (RH) JOINT À ROTULE DE BRAS DE DIRECTION (D) | 0.3 | 0.3 | 0.3 | 0.3 | 0.3 | 0.3 | 0.38 | 0.3 |
| 07 | 13 | STEERING ARM BALL JOINT (LH) JOINT À ROTULE DE BRAS DE DIRECTION (G) | 0.3 | 0.3 | 0.3 | 0.3 | 0.3 | 0.3 | 0.3 | 0.3 |
| 07 | 14 | TELESCOPIC TUBE, SPRING, BUSHING, SAUCER TUBE TÉLESCOPIQUE, RESSORT, DOUILLES, SOUPAPE | | | | | | | 0.3 | |
| 07 | 15 | SQUARE SHAFT AND/OR SHOCK AND/OR BUSHINGS ARBRE CARRÉ ET/OU AMORTISSEUR ET/OU DOUILLES | | | | | | | 0.4 | |
| 07 | 18 | TIE ROD (main tube/steering arm) BARRE D'ACCOUPEMENT (colonne/bras direction) | 2.0 | 2.0 | 2.0 | 2.0 | 2.0 | 2.0 | | 2.0 |
| 07 | 19 | TIE ROD (RH and LH main tube/steering arm) BARRE D'ACCOUPEMENT (colonne/bras direction D et G) | 1.0 | 1.0 | 1.0 | 1.0 | 1.0 | 1.0 | | 1.0 |
| 07 | 20 | TIE ROD COVER (1) CAPUCHON DE TIMONERIE (1) | 0.4 | 0.4 | 0.4 | 0.4 | 0.4 | 0.4 | | 0.4 |
| 07 | 21 | TIE ROD COVERS (2) CAPUCHONS DE TIMONERIE (2) | 0.8 | 0.8 | 0.8 | 0.8 | 0.8 | 0.8 | | 0.8 |
| 07 | 22 | STEERING PIVOT ARM BRAS DE DIRECTION PIVOTANT | 0.5 | 0.5 | 0.5 | 0.5 | 0.5 | 0.5 | | 0.5 |
| 07 | 23 | STEERING MAIN TUBE BALL JOINT JOINT À ROTULE DE COLONNE DE DIRECTION | 2.0 | 2.0 | 2.0 | 2.0 | 2.0 | 2.0 | 0.5 | 2.0 |
| 07 | 24 | STEERING MAIN TUBE COLONNE DE DIRECTION | 2.1 | 2.1 | 2.1 | 2.1 | 2.1 | 2.1 | 2.0 | 2.1 |
| 07 | 25 | HANDLE BAR GUIDON | 0.4 | 0.4 | 0.4 | 0.4 | 0.4 | 0.4 | 0.6 | 0.4 |

STEERING SYSTEM AND FRONT SUSPENSION SYSTÈME DE DIRECTION ET SUSPENSION AVANT

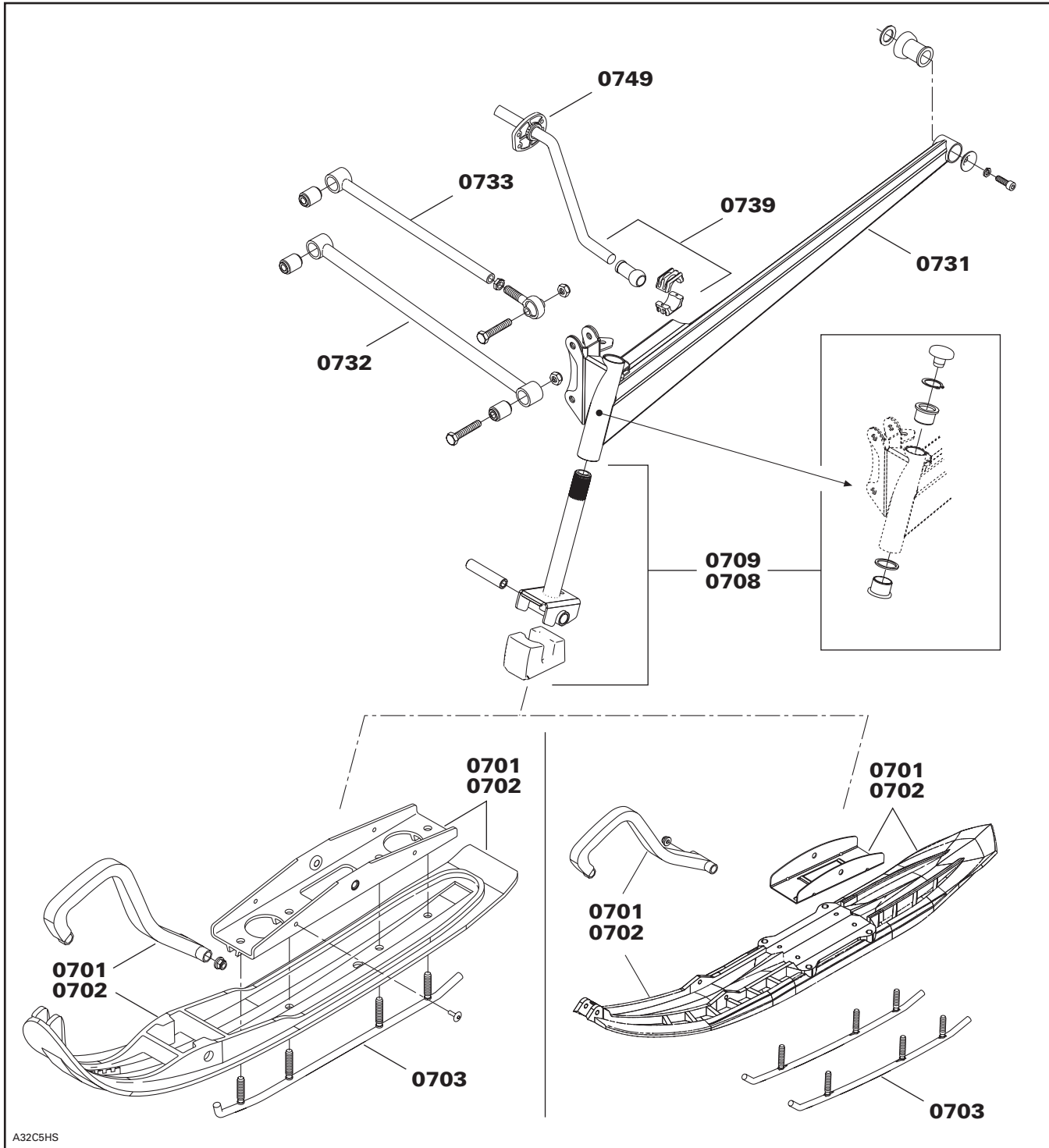
| SYSTEM SYSTÈME | CODE | DESCRIPTION | MX Z 600 ADRENALINE/RENEGADE | MX Z 600 SPORT MX Z 600 TRAIL | LEGEND 600 SE/GS | LEGEND 600 SPORT | GRAND TOURING 600 SE/GS | GRAND TOURING 600 SPORT | SKANDIC 600 WT | SUMMIT 600 SPORT |
|-------------------|------|--|---------------------------------|----------------------------------|---------------------|------------------|----------------------------|----------------------------|----------------|------------------|
| | | | 14 | 15 | 16 | 17 | 18 | 19 | 20 | 21 |
| 07 | 26 | HANDLE BAR GRIP/HOUSING/PARKING BRAKE POIGNÉE DE GUIDON/LOGEMENT/FREIN DE STATIONNEMENT | 0.3 | 0.3 | 0.3 | 0.3 | 0.3 | 0.3 | 0.3 | 0.3 |
| 07 | 27 | HANDLE BAR PADDING COUSSINET DE GUIDON | 0.3 | 0.3 | 0.3 | 0.3 | 0.3 | 0.3 | 0.3 | 0.3 |
| 07 | 28 | UPPER STEERING MAIN TUBE BUSHING DOUILLE SUPÉRIEURE DE COLONNE DE DIRECTION | 0.7 | 0.7 | 0.7 | 0.7 | 0.7 | 0.7 | 0.3 | 0.7 |
| 07 | 29 | LOWER STEERING MAIN TUBE BUSHING DOUILLE INFÉRIEURE DE COLONNE DE DIRECTION | 2.1 | 2.1 | 2.1 | 2.1 | 2.1 | 2.1 | 0.5 | 2.1 |
| 07 | 31 | SWING ARM (LH or RH) BRAS OSCILLANT (G ou D) | 0.4 | 0.4 | 0.4 | 0.4 | 0.4 | 0.4 | | 0.4 |
| 07 | 32 | LOWER ARM (LH or RH) BRAS DE SUSPENSION INFÉRIEUR (G ou D) | 0.5 | 0.5 | 0.5 | 0.5 | 0.5 | 0.5 | | 0.5 |
| 07 | 33 | UPPER ARM (LH or RH) BRAS DE SUSPENSION SUPÉRIEUR (G ou D) | 0.3 | 0.3 | 0.3 | 0.3 | 0.3 | 0.3 | | 0.3 |
| 07 | 35 | HANDLE STEERING SUPPORT (all) SUPPORT DE GUIDON (tous) | 0.3 | 0.3 | 0.3 | 0.3 | 0.3 | 0.3 | 0.3 | 0.3 |
| 07 | 36 | HEATED GRIPS POIGNÉES CHAUFFANTES | 0.4 | 0.4 | 0.4 | 0.4 | 0.4 | 0.4 | 0.4 | 0.4 |
| 07 | 37 | SHOCK AND/OR SPRING (1) AMORTISSEUR ET/OU RESSORT (1) | 0.3 | 0.3 | 0.3 | 0.3 | 0.3 | 0.3 | 0.4 | 0.3 |
| 07 | 38 | SHOCKS AND/OR SPRINGS (2) AMORTISSEURS ET/OU RESSORTS (2) | 0.4 | 0.4 | 0.4 | 0.4 | 0.4 | 0.4 | 0.6 | 0.4 |
| 07 | 39 | STABILIZER BAR BARRE STABILISATRICE | 0.4 | 0.4 | 0.4 | 0.4 | 0.4 | 0.4 | | 0.4 |
| 07 | 49 | STABILIZER BAR BUSHING PLAQUETTE BARRE STABILISATRICE | 0.3 | 0.3 | 0.3 | 0.3 | 0.3 | 0.3 | | 0.3 |
| 07 | 52 | STEERING MAIN TUBE BALL JOINT (RH) JOINT À ROTULE DE LA COLONNE DE DIRECTION (D) | | | | | | | 0.9 | |
| 07 | 55 | FRONT SWING ARM DECAL (1 or 2) DÉCALQUE BRAS SUSPENSION AVANT (1 ou 2) | 0.3 | 0.3 | 0.3 | 0.3 | 0.3 | 0.3 | | 0.3 |
| 07 | 59 | TIE ROD (steering shaft LH) BARRE D'ACCOUPLMENT (arbre de direction G) | 0.3 | 0.3 | 0.3 | 0.3 | 0.3 | 0.3 | 0.5 | 0.3 |
| 07 | 60 | TIE ROD (steering shaft, steering arm RH) BARRE D'ACCOUPLMENT (arbre de direction, bras de direction D) | 0.3 | 0.3 | 0.3 | 0.3 | 0.3 | 0.3 | 0.9 | 0.3 |

STEERING SYSTEM AND FRONT SUSPENSION SYSTÈME DE DIRECTION ET SUSPENSION AVANT

07
SYSTEM/SYSTÈME



A32G0BS



REAR SUSPENSION AND TRACK SUSPENSION ARRIÈRE ET CHENILLE

08

SYSTEM/SYSTÈME

| SYSTEM SYSTÈME | CODE | DESCRIPTION | MX Z 600 ADRENALINE/RENEGADE | MX Z 600 SPORT MX Z 600 TRAIL | LEGEND 600 SE/GS | LEGEND 600 SPORT | GRAND TOURING 600 SE/GS | GRAND TOURING 600 SPORT | SKANDIC 600 WT | SUMMIT 600 SPORT |
|-------------------|------|--|---------------------------------|----------------------------------|---------------------|------------------|----------------------------|----------------------------|----------------|------------------|
| | | | 14 | 15 | 16 | 17 | 18 | 19 | 20 | 21 |
| 08 | 00 | NO LABOR INVOLVED AUCUNE MAIN-D'OEUVRE IMPLIQUÉE | 0 | 0 | 0 | 0 | 0 | 0 | 0 | 0 |
| 08 | 01 | SLIDER SHOE (1) GLISSIÈRE (1) | 0.5 | 0.5 | 0.5 | 0.5 | 0.5 | 0.5 | 0.5 | 0.5 |
| 08 | 02 | SLIDER SHOES (2) GLISSIÈRES (2) | 0.7 | 0.7 | 0.7 | 0.7 | 0.7 | 0.7 | 0.7 | 0.7 |
| 08 | 03 | RUNNER (1) PORTE-GLISSIÈRE (1) | 1.2 | 1.2 | 1.2 | 1.2 | 1.2 | 1.2 | 0.9 | 1.2 |
| 08 | 04 | RUNNERS (2) PORTE-GLISSIÈRES (2) | 1.5 | 1.5 | 1.5 | 1.5 | 1.5 | 1.5 | 1.2 | 1.5 |
| 08 | 09 | FRONT IDLER WHEEL AND/OR BEARING (1) ROUE DE SUPPORT AVANT ET/OU ROULEMENT (1) | 0.3 | 0.3 | 0.3 | 0.3 | 0.3 | 0.3 | 0.3 | 0.3 |
| 08 | 10 | FRONT IDLER WHEELS AND/OR BEARINGS AND/OR SHAFTS (2) ROUES DE SUPPORT AVANT ET/OU ROULEMENTS ET/OU ARBRES (2) | 0.4 | 0.4 | 0.4 | 0.4 | 0.4 | 0.4 | 0.4 | 0.4 |
| 08 | 11 | FRONT IDLER WHEEL SUPPORT (1) SUPPORT DE ROUE AVANT (1) | 0.3 | 0.3 | 0.3 | 0.3 | 0.3 | 0.3 | | 0.3 |
| 08 | 12 | FRONT IDLER WHEELS SUPPORTS (2) SUPPORTS DE ROUE AVANT (2) | 0.4 | 0.4 | 0.4 | 0.4 | 0.4 | 0.4 | | 0.4 |
| 08 | 13 | CENTER IDLER WHEEL AND/OR BEARING (1) ROUE DE SUPPORT CENTRALE ET/OU ROULEMENT (1) | 0.3 | 0.3 | 0.3 | 0.3 | 0.3 | 0.3 | 0.3 | 0.3 |
| 08 | 14 | CENTER IDLER WHEELS AND/OR BEARINGS AND/OR SHAFTS (2) ROUES DE SUPPORT CENTRALES ET/OU ROULEMENTS ET/OU ARBRES (2) | 0.4 | 0.4 | 0.4 | 0.4 | 0.4 | 0.4 | 0.3 | 0.4 |
| 08 | 15 | CENTER IDLER WHEEL SUPPORT (1) SUPPORT DE ROUE CENTRALE (1) | 0.3 | 0.3 | 0.3 | 0.3 | 0.3 | 0.3 | 0.3 | 0.3 |
| 08 | 17 | REAR IDLER AND/OR BEARING (1) ROUE DE SUPPORT ARRIÈRE ET/OU ROULEMENT (1) | 0.4 | 0.4 | 0.4 | 0.4 | 0.4 | 0.4 | 0.3 | 0.4 |
| 08 | 18 | REAR IDLERS AND/OR BEARINGS (2) ROUES DE SUPPORT ARRIÈRE ET/OU ROULEMENTS (2) | 0.5 | 0.5 | 0.5 | 0.5 | 0.5 | 0.5 | 0.4 | 0.5 |
| 08 | 19 | REAR IDLER WHEELS AXLE ESSIEU DE ROUES DE SUPPORT ARRIÈRE | 0.5 | 0.5 | 0.5 | 0.5 | 0.5 | 0.5 | 0.3 | 0.5 |
| 08 | 22 | TAIL PIVOT IDLER WHEEL, INSIDE (1) ROUE SUPPORT DE PIVOT ARRIÈRE ET/OU ROULEMENT INT. (1) | | | | | | | 0.3 | |
| 08 | 23 | TAIL PIVOT IDLER WHEELS, OR AXEL (2) ROUES SUPPORT DE PIVOT ARRI./ROULEMENT OU ESSIEU (2) | | | | | | | 0.3 | |
| 08 | 29 | AXEL (stopper strap) AXE (courroie d'arrêt) | 0.3 | 0.3 | 0.3 | 0.3 | 0.3 | 0.3 | 0.3 | 0.3 |
| 08 | 30 | REAR SHOCK SUPPORT, SCREW, PLATE SUPPORT DE L'AMORTISSEUR ARRIÈRE, VIS, PLAQUE | | | | | | | 0.3 | |
| 08 | 31 | TRACK TENSION ADJUSTER (1) PLAQUE DE RÉGLAGE TENSION CHENILLE (1) | 0.3 | 0.3 | 0.3 | 0.3 | 0.3 | 0.3 | | 0.3 |
| 08 | 32 | TRACK TENSION ADJUSTERS (2) PLAQUES DE RÉGLAGE TENSION CHENILLE (2) | 0.4 | 0.4 | 0.4 | 0.4 | 0.4 | 0.4 | | 0.4 |

| SYSTEM SYSTÈME | CODE | DESCRIPTION | MX Z 600 ADRENALINE/RENEGADE | MX Z 600 SPORT MX Z 600 TRAIL | LEGEND 600 SE/GS | LEGEND 600 SPORT | GRAND TOURING 600 SE/GS | GRAND TOURING 600 SPORT | SKANDIC 600 WT | SUMMIT 600 SPORT |
|-------------------|------|-------------|---------------------------------|----------------------------------|---------------------|------------------|----------------------------|----------------------------|----------------|------------------|
| | | | 14 | 15 | 16 | 17 | 18 | 19 | 20 | 21 |

| | | | | | | | | | | |
|----|----|---|-----|-----|-----|-----|-----|-----|-----|-----|
| 08 | 33 | RUNNER RUBBER STOPPER (1) BUTÉE DE CAOUTCHOUC DE PORTE-GLISSIÈRE (1) | 0.3 | 0.3 | 0.3 | 0.3 | 0.3 | 0.3 | 0.3 | 0.3 |
| 08 | 34 | RUNNER RUBBER STOPPERS (2) BUTÉES DE CAOUTCHOUC DE PORTE-GLISSIÈRE (2) | 0.4 | 0.4 | 0.4 | 0.4 | 0.4 | 0.4 | 0.3 | 0.4 |
| 08 | 35 | FRONT ARM AND/OR AXLE BRAS AVANT ET/OU ESSIEU | 0.8 | 0.8 | 0.8 | 0.8 | 0.8 | 0.8 | 0.6 | 0.8 |
| 08 | 36 | FRONT ARM STOPPER STRAP/STOPPER BOLT COURROIE D'ARRÊT BRAS AVANT/BOULON D'ARRÊT | 0.3 | 0.3 | 0.3 | 0.3 | 0.3 | 0.3 | 0.3 | 0.3 |
| 08 | 37 | FRONT ARM SUPPORT SUPPORT DE BRAS AVANT | | | | | | | 0.6 | |
| 08 | 40 | REAR ARM AND/OR AXLE BRAS ARRIÈRE ET/OU ESSIEU | 0.7 | 0.7 | 0.7 | 0.7 | 0.7 | 0.7 | 0.5 | 0.7 |
| 08 | 41 | REAR ARM IDLER WHEELS (1-2) AND/OR SHAFT-CROSS ROUES DE SUPPORT BRAS ARRIÈRE (1-2) ET/OU AXE TRANSVERSALE | 0.3 | 0.3 | 0.3 | 0.3 | 0.3 | 0.3 | 0.3 | 0.3 |
| 08 | 42 | REAR ARM SHACKLE JUMELLE DE BRAS ARRIÈRE | 0.3 | 0.3 | 0.3 | 0.3 | 0.3 | 0.3 | 0.3 | 0.3 |
| 08 | 44 | REAR AND FRONT ARMS BRAS ARRIÈRE ET AVANT | 1.5 | 1.5 | 1.5 | 1.5 | 1.5 | 1.5 | 1.1 | 1.5 |
| 08 | 48 | TAIL PIVOT SUPPORT (1) SUPPORT DE PIVOT ARRIÈRE (1) | | | | | | | 0.4 | |
| 08 | 49 | TAIL PIVOT SUPPORTS (2) SUPPORTS DE PIVOT ARRIÈRE (2) | | | | | | | 0.8 | |
| 08 | 50 | REAR TORSION SPRING AND/OR WHEEL (1) RESSORT DE TORSION ARRIÈRE ET/OU ROUE (1) | 0.3 | 0.3 | 0.3 | 0.3 | 0.3 | 0.3 | 0.3 | 0.3 |
| 08 | 51 | REAR TORSION SPRINGS AND/OR WHEELS (2) RESSORTS DE TORSION ET/OU ROUES (2) | 0.4 | 0.4 | 0.4 | 0.4 | 0.4 | 0.4 | 0.4 | 0.4 |
| 08 | 52 | TORSION SPRING SUPPORT SUPPORT DE RESSORT DE TORSION | 0.3 | 0.3 | 0.3 | 0.3 | 0.3 | 0.3 | 0.3 | 0.3 |
| 08 | 53 | SPRING ADJUSTMENT CAM (1) CAME DE RÉGLAGE DE RESSORT (1) | 0.3 | 0.3 | 0.3 | 0.3 | 0.3 | 0.3 | 0.3 | 0.3 |
| 08 | 54 | SPRING ADJUSTMENT CAMS (2) CAMES DE RÉGLAGE DE RESSORT (2) | 0.4 | 0.4 | 0.4 | 0.4 | 0.4 | 0.4 | 0.4 | 0.4 |
| 08 | 55 | SHOCK AND/OR SPRING AND/OR BUSHING AMORTISSEUR ET/OU RESSORT ET/OU DOUILLE | 0.3 | 0.3 | 0.3 | 0.3 | 0.3 | 0.3 | 0.3 | 0.3 |
| 08 | 63 | CENTER UPPER IDLER WHEELS AND/OR SHAFT (tunnel) (1 or 2) ROUES DE SUPPORT CENTRALES INTÉRIEURES ET/OU ARBRE (tunnel) (1 ou 2) | 0.3 | 0.3 | 0.3 | 0.3 | 0.3 | 0.3 | | 0.3 |
| 08 | 65 | BEARING HOUSING OUTSIDE (drive axle) LOGEMENT DES ROULEMENTS D'EXTÉRIEUR (essieu moteur) | 0.3 | 0.3 | 0.3 | 0.3 | 0.3 | 0.3 | 0.3 | 0.3 |
| 08 | 66 | DRIVE AXLE BEARING AND/OR SEAL ROULEMENT D'ESSIEU MOTEUR ET/OU JOINT | 2.3 | 2.3 | 2.3 | 2.3 | 2.3 | 2.3 | 0.3 | 2.3 |

REAR SUSPENSION AND TRACK SUSPENSION ARRIÈRE ET CHENILLE

08

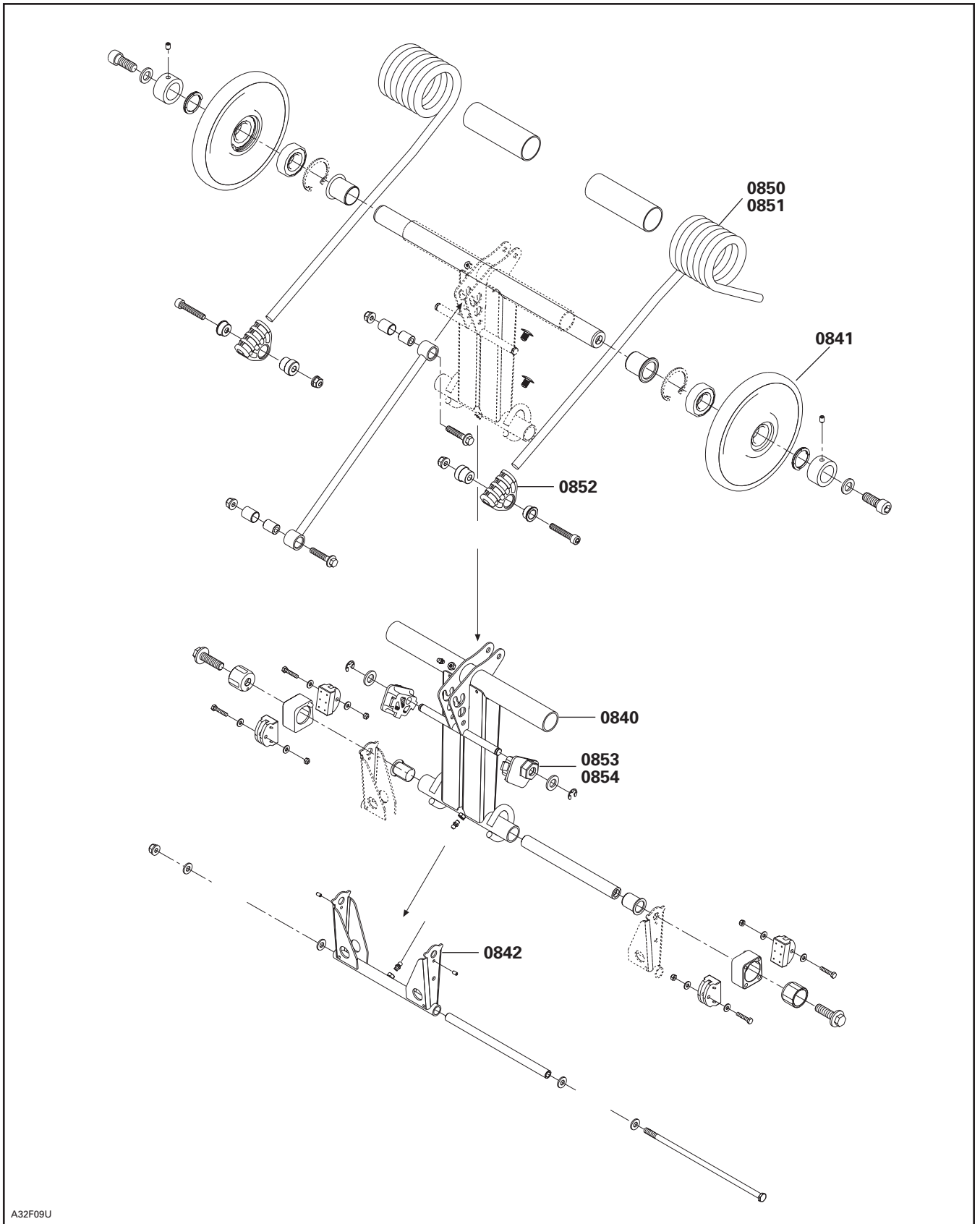
SYSTEM/SYSTÈME

| SYSTEM SYSTÈME | CODE | DESCRIPTION | MX Z 600 ADRENALINE/RENEGADE | MX Z 600 SPORT MX Z 600 TRAIL | LEGEND 600 SE/SS | LEGEND 600 SPORT | GRAND TOURING 600 SE/SS | GRAND TOURING 600 SPORT | SKANDIC 600 WT | SUMMIT 600 SPORT |
|-------------------|------|--|---------------------------------|----------------------------------|---------------------|------------------|----------------------------|----------------------------|----------------|------------------|
| | | | 14 | 15 | 16 | 17 | 18 | 19 | 20 | 21 |
| 08 | 67 | DRIVE AXLE, SPROCKET AND/OR FLANGE (1) ROUE DENTÉE, ESSIEU MOTEUR ET/OU FLASQUE (1) | 2.5 | 2.5 | 2.5 | 2.5 | 2.5 | 2.5 | 2.0 | 2.5 |
| 08 | 68 | DRIVE AXLES, SPROCKETS, FLANGES (2 or more) ROUES DENTÉES, ESSIEUX MOTEUR, FLASQUES (2 ou plus) | 3.1 | 3.1 | 3.1 | 3.1 | 3.1 | 3.1 | 2.4 | 3.1 |
| 08 | 69 | TRACK (1) CHENILLE (1) | 1.6 | 1.6 | 1.6 | 1.6 | 1.6 | 1.6 | 1.6 | 1.6 |
| 08 | 71 | CLEATS AND/OR GUIDES (0-9) SEGMENTS GUIDE ET/OU GUIDES (0-9) | 0.3 | 0.3 | 0.3 | 0.3 | 0.3 | 0.3 | 0.3 | 0.3 |
| 08 | 72 | CLEATS AND/OR GUIDES (10-14) SEGMENTS GUIDE ET/OU GUIDES (10-14) | 0.4 | 0.4 | 0.4 | 0.4 | 0.4 | 0.4 | 0.4 | 0.4 |
| 08 | 73 | CLEATS AND/OR GUIDES (15-19) SEGMENTS GUIDE ET/OU GUIDES (15-19) | 0.5 | 0.5 | 0.5 | 0.5 | 0.5 | 0.5 | 0.5 | 0.5 |
| 08 | 74 | CLEATS AND/OR GUIDES (20-24) SEGMENTS GUIDE ET/OU GUIDES (20-24) | 0.6 | 0.6 | 0.6 | 0.6 | 0.6 | 0.6 | 0.6 | 0.6 |
| 08 | 75 | CLEATS AND/OR GUIDES (25-29) SEGMENTS GUIDE ET/OU GUIDES (25-29) | 0.7 | 0.7 | 0.7 | 0.7 | 0.7 | 0.7 | 0.7 | 0.7 |
| 08 | 76 | CLEATS AND/OR GUIDES (30-34) SEGMENTS GUIDE ET/OU GUIDES (30-34) | 0.8 | 0.8 | 0.8 | 0.8 | 0.8 | 0.8 | 0.8 | 0.8 |
| 08 | 77 | CLEATS AND/OR GUIDES (35-39) SEGMENTS GUIDE ET/OU GUIDES (35-39) | 0.9 | 0.9 | 0.9 | 0.9 | 0.9 | 0.9 | 0.9 | 0.9 |
| 08 | 78 | CLEATS AND/OR GUIDES (40-44) SEGMENTS GUIDE ET/OU GUIDES (40-44) | 1.0 | 1.0 | 1.0 | 1.0 | 1.0 | 1.0 | 1.0 | 1.0 |
| 08 | 79 | CLEATS AND/OR GUIDES (45-49) SEGMENTS GUIDE ET/OU GUIDES (45-49) | 1.1 | 1.1 | 1.1 | 1.1 | 1.1 | 1.1 | 1.1 | 1.1 |
| 08 | 80 | CLEATS AND/OR GUIDES (50-54) SEGMENTS GUIDE ET/OU GUIDES (50-54) | 1.2 | 1.2 | 1.2 | 1.2 | 1.2 | 1.2 | 1.2 | 1.2 |
| 08 | 81 | CLEATS AND/OR GUIDES (55-59) SEGMENTS GUIDE ET/OU GUIDES (55-59) | | | | | | | 1.3 | |
| 08 | 82 | CLEATS AND/OR GUIDES (60-64) SEGMENTS GUIDE ET/OU GUIDES (60-64) | | | | | | | 1.4 | |
| 08 | 83 | CLEATS AND/OR GUIDES (65-70) SEGMENTS GUIDE ET/OU GUIDES (65-70) | | | | | | | 1.5 | |
| ** | | DRIVE AXLE SPROCKET REPOSITIONNING REPOSITION DE BARBOTIN D'ESSIEU | 0.4 | 0.4 | 0.4 | 0.4 | 0.4 | 0.4 | 0.4 | 0.4 |
| 08 | 85 | ADJUSTMENT SCREW (1) VIS D'AJUSTEMENT (1) | 0.3 | 0.3 | 0.3 | 0.3 | 0.3 | 0.3 | 0.3 | 0.3 |
| 08 | 86 | ADJUSTMENT SCREWS (2) VIS D'AJUSTEMENT (2) | 0.4 | 0.4 | 0.4 | 0.4 | 0.4 | 0.4 | 0.4 | 0.4 |
| 08 | 87 | SHOCK SUPPORT AND/OR AXLE SUPPORT D'AMORTISSEUR ET/OU AXE | 0.4 | 0.4 | 0.4 | 0.4 | 0.4 | 0.4 | | 0.4 |
| 08 | 88 | FRONT SHOCK AND/OR SPRING AMORTISSEUR AVANT ET/OU RESSORT | 0.5 | 0.5 | 0.5 | 0.5 | 0.5 | 0.5 | | 0.5 |

| SYSTEM SYSTÈME | CODE | DESCRIPTION | MX Z 600 ADREVALINE/RENEGADE | MX Z 600 SPORT MX Z 600 TRAIL | LEGEND 600 SE/SS | LEGEND 600 SPORT | GRAND TOURING 600 SE/SS | GRAND TOURING 600 SPORT | SKANDIC 600 WT | SUMMIT 600 SPORT |
|-------------------|------|---|---------------------------------|----------------------------------|---------------------|------------------|----------------------------|----------------------------|----------------|------------------|
| | | | 14 | 15 | 16 | 17 | 18 | 19 | 20 | 21 |
| 08 | 89 | FRONT IDLER WHEELS AND/OR BEARINGS (3 or 4) ROUES DE SUPPORT AVANT ET/OU ROULEMENTS (3 ou 4) | 0.5 | 0.5 | 0.5 | 0.5 | 0.5 | 0.5 | 0.5 | 0.5 |
| 08 | 90 | FRONT IDLER WHEELS AND/OR BEARINGS (5 or 6) ROUES DE SUPPORT AVANT ET/OU ROULEMENTS (5 ou 6) | 0.7 | 0.7 | 0.7 | 0.7 | 0.7 | 0.7 | 0.7 | 0.7 |
| 08 | 91 | BRAS PIVOT ARM BRAS DE PIVOT ARRIÈRE | | | | | | | 0.4 | |
| 08 | 92 | FRONT TORSION SPRING (1) RESSORT DE TORSION AVANT (1) | | | | | | | 0.3 | |
| 08 | 93 | FRONT TORSION SPRINGS (2) RESSORTS DE TORSION AVANT (2) | | | | | | | 0.4 | |
| 08 | 94 | FRONT IDLER WHEELS (inside) ROUES DE SUPPORT AVANT (intérieur) | 1.0 | 1.0 | 1.0 | 1.0 | 1.0 | 1.0 | | 1.0 |
| 08 | 99 | SPEEDOMETER DRIVE INSERT PRISE D'INDICATEUR DE VITESSE | 0.4 | 0.4 | 0.4 | 0.4 | 0.4 | 0.4 | 0.4 | 0.4 |

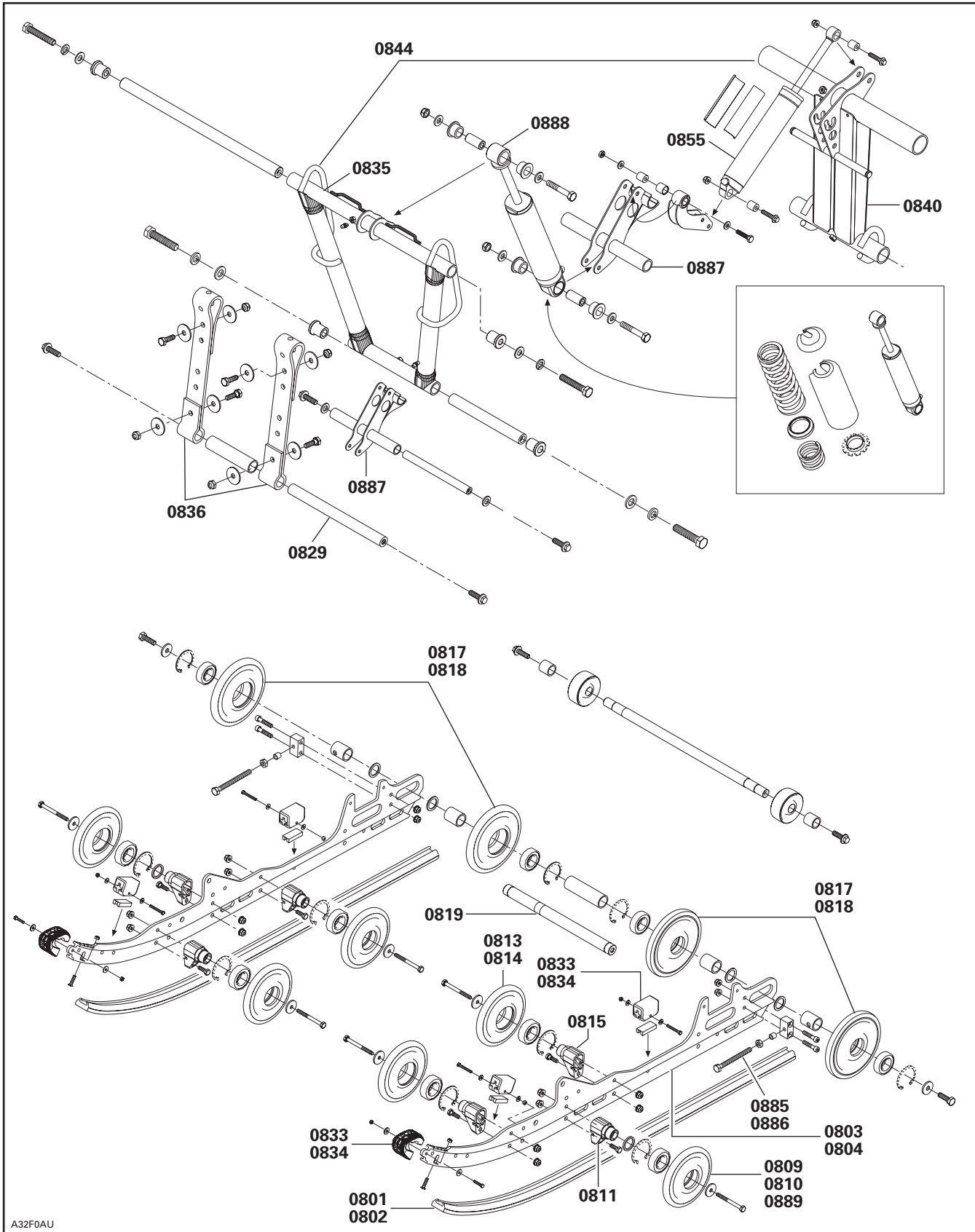
REAR SUSPENSION AND TRACK SUSPENSION ARRIÈRE ET CHENILLE

08
SYSTEM/SYSTEME



A32F09U

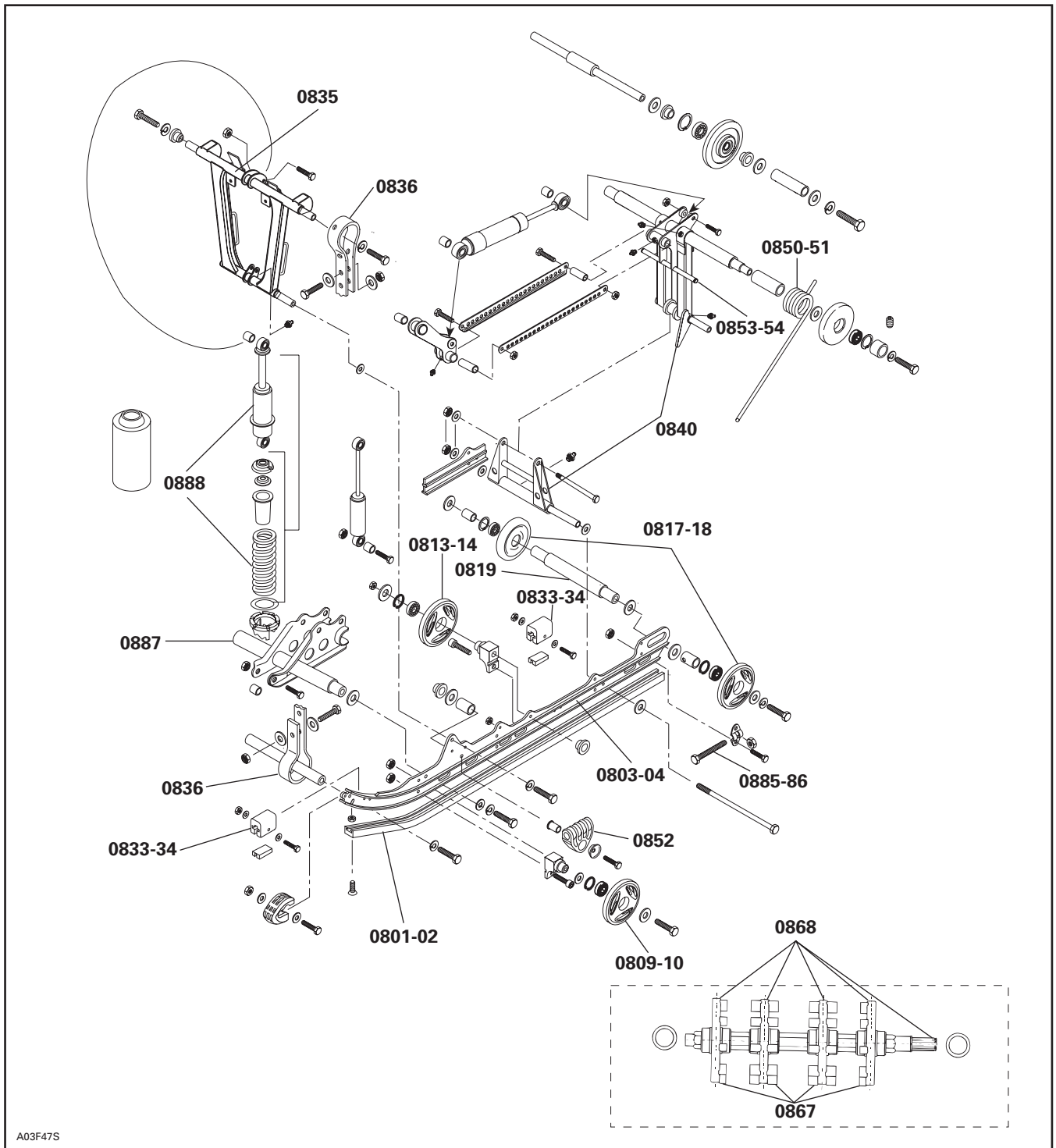
**REAR SUSPENSION AND TRACK
SUSPENSION ARRIÈRE ET CHENILLE**



A32F0AU

REAR SUSPENSION AND TRACK SUSPENSION ARRIÈRE ET CHENILLE

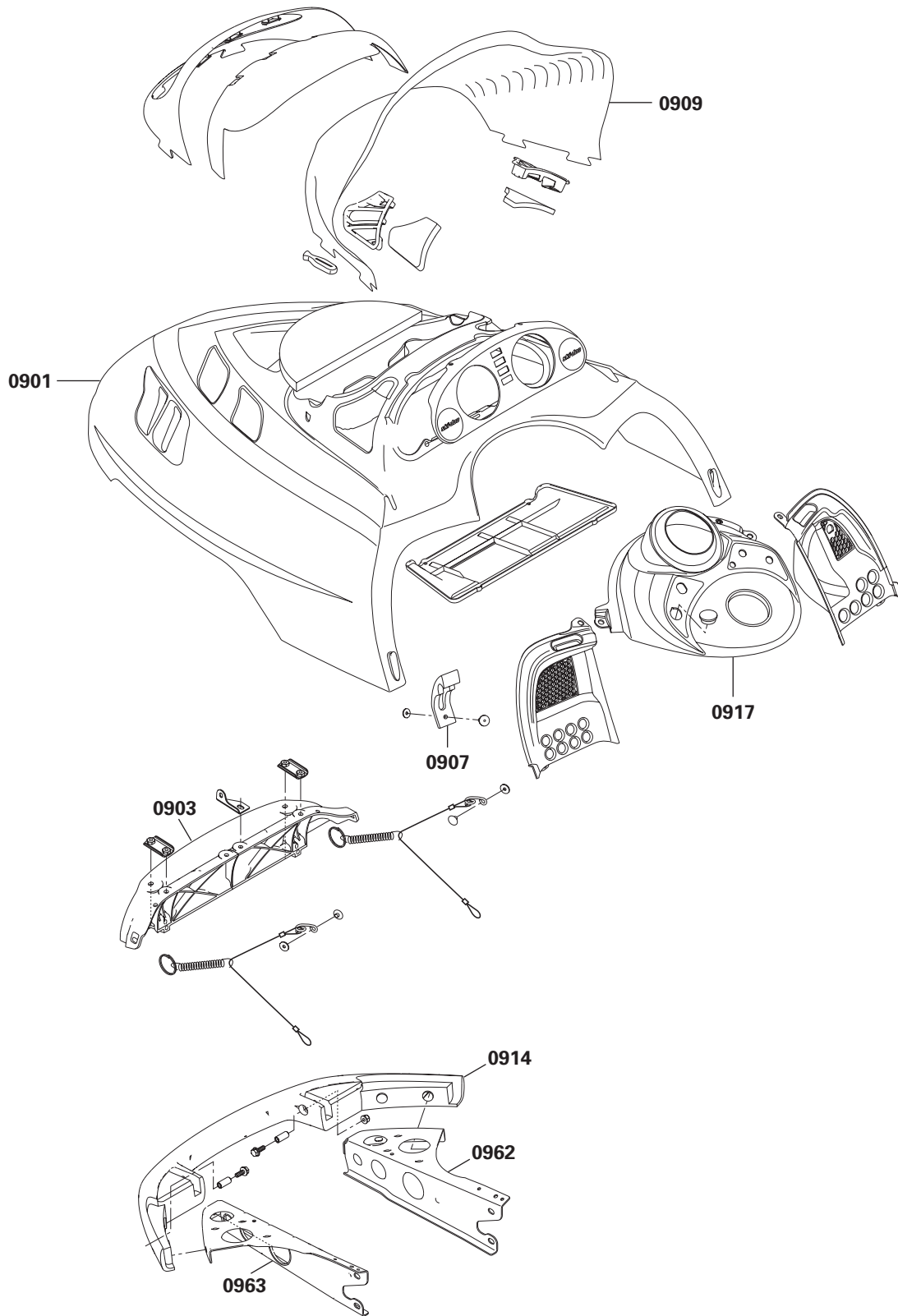
08
SYSTEM/SYSTÈME



| SYSTEM SYSTÈME | CODE | DESCRIPTION | MX Z 600 ADRENALINE/RENEGADE | MX Z 600 SPORT MX Z 600 TRAIL | LEGEND 600 SE/GS | LEGEND 600 SPORT | GRAND TOURING 600 SE/GS | GRAND TOURING 600 SPORT | SKANDIC 600 WT | SUMMIT 600 SPORT |
|-------------------|------|-------------|---------------------------------|----------------------------------|---------------------|------------------|----------------------------|----------------------------|----------------|------------------|
| | | | 14 | 15 | 16 | 17 | 18 | 19 | 20 | 21 |

| | | | | | | | | | | |
|----|----|---|------|------|------|------|------|------|-----|------|
| 09 | 00 | NO LABOR INVOLVED AUCUNE MAIN-D'OEUVRE IMPLIQUÉE | 0 | 0 | 0 | 0 | 0 | 0 | 0 | 0 |
| 09 | 01 | HOOD CAPOT | 3.0 | 3.0 | 3.0 | 3.0 | 3.0 | 3.0 | 2.0 | 3.0 |
| 09 | 03 | HOOD HINGE CHARNIÈRE DU CAPOT | 0.3 | 0.3 | 0.3 | 0.3 | 0.3 | 0.3 | 0.3 | 0.3 |
| 09 | 05 | CAB DECALS (RH or LH) AUTOCOLLANTS DE LA CABINE (G ou D) | 0.3 | 0.3 | 0.3 | 0.3 | 0.3 | 0.3 | 0.3 | 0.3 |
| 09 | 06 | CAB DECALS (all) AUTOCOLLANTS DE LA CABINE (tous) | 0.9 | 0.9 | 0.9 | 0.9 | 0.9 | 0.9 | 0.9 | 0.9 |
| 09 | 07 | CAB LATCH (1 or 2) ATTACHE DE LA CABINE (1 ou 2) | 0.3 | 0.3 | 0.3 | 0.3 | 0.3 | 0.3 | 0.3 | 0.3 |
| 09 | 09 | WINDSHIELD PARE-BRISE | 0.3 | 0.3 | 0.3 | 0.3 | 0.3 | 0.3 | 0.3 | 0.3 |
| 09 | 13 | CARGO RACK SUPPORT À BAGAGES | | | | | 0.4 | 0.4 | 0.4 | |
| 09 | 14 | FRONT BUMPER PARE-CHOCS AVANT | 0.4 | 0.4 | 0.4 | 0.4 | 0.4 | 0.4 | 0.6 | 0.4 |
| 09 | 16 | FRONT BUMPER CAP (RH or LH) EXTRÉMITÉ DU PARE-CHOCS AVANT (G ou D) | | | | | | | 0.1 | |
| 09 | 17 | CONSOLE CONSOLE | 1.2 | 1.2 | 1.2 | 1.2 | 1.2 | 1.2 | 1.2 | 1.2 |
| 09 | 21 | SEAT ASS'Y OR BACKREST SIÈGE COMPLET OU DOSSIER | 0.3 | 0.3 | 0.3 | 0.3 | 0.3 | 0.3 | 0.3 | 0.3 |
| 09 | 22 | SEAT COVER AND/OR FOAM HOUSSE DE SIÈGE ET/OU MOUSSE | 1.1 | 1.1 | 1.1 | 1.1 | 1.5 | 1.5 | 1.2 | 1.1 |
| 09 | 24 | BOTTOM PAN COQUE | 2.0 | 2.0 | 2.0 | 2.0 | 2.0 | 2.0 | 2.0 | 2.0 |
| 09 | 30 | REAR FOOTREST REPOSE-PIED ARRIÈRE | | | | | 0.3 | 0.3 | | |
| 09 | 33 | RADIATOR RADIATEUR | 3.6 | 3.6 | 3.6 | 3.6 | 3.6 | 3.6 | 3.6 | 3.6 |
| 09 | 34 | REAR BUMPER PARE-CHOCS ARRIÈRE | 0.3 | 0.3 | 0.3 | 0.3 | 0.3 | 0.3 | 0.3 | 0.3 |
| 09 | 35 | HITCH SUPPORT (all parts) SUPPORT D'ATTELAGE (toutes pièces) | | | | | | | 0.3 | |
| 09 | 40 | BUMPER DECALS OR MOULDING AUTOCOLLANTS OU MOULURE DES PARE-CHOCS | | | | | | | 0.3 | |
| 09 | 48 | FRONT FOOTREST (LH or RH) REPOSE-PIED AVANT (G ou D) | 1.0 | 1.0 | 1.0 | 1.0 | 1.0 | 1.0 | | 1.0 |
| 09 | 49 | FRAME ASS'Y OR FRONT MEMBER CHÂSSIS COMPLET OU CADRE AVANT | 11.6 | 11.6 | 11.6 | 11.6 | 11.6 | 11.6 | 7.0 | 11.6 |

| SYSTEM SYSTÈME | CODE | DESCRIPTION | MX Z 600 ADRENALINE/RENEGADE | MX Z 600 SPORT MX Z 600 TRAIL | LEGEND 600 SE/GS | LEGEND 600 SPORT | GRAND TOURING 600 SE/GS | GRAND TOURING 600 SPORT | SKANDIC 600 WT | SUMMIT 600 SPORT |
|-------------------|------|--|---------------------------------|----------------------------------|---------------------|------------------|----------------------------|----------------------------|----------------|------------------|
| | | | 14 | 15 | 16 | 17 | 18 | 19 | 20 | 21 |
| 09 * | 50 | FRAME FORMING (tunnel) TUNNEL | 14.1 | 14.1 | 14.1 | 14.1 | 14.1 | 14.1 | | 14.1 |
| 09 | 51 | REAR CAP FRAME CAPUCHON ARRIÈRE DU CHÂSSIS | 0.7 | 0.7 | 0.7 | 0.7 | 0.7 | 0.7 | | 0.7 |
| 09 | 55 | SNOW GUARD (1) GARDE-NEIGE (1) | 0.3 | 0.3 | 0.3 | 0.3 | 0.3 | 0.3 | 0.3 | 0.3 |
| 09 | 58 | BACKREST AND/OR COVER DOSSIER ET/OU HOUSSE | | | | | 0.3 | 0.3 | 0.3 | |
| 09 | 59 | BACKREST ARM BRAS DU DOSSIER | | | | | 0.3 | 0.3 | 0.3 | |
| 09 | 62 | BOTTOM PAN REINFORCEMENT (RH) RENFORT DE COQUE (D) | 0.7 | 0.7 | 0.7 | 0.7 | 0.7 | 0.7 | | 0.7 |
| 09 | 63 | BOTTOM PAN REINFORCEMENT (LH) RENFORT DE COQUE (G) | 0.7 | 0.7 | 0.7 | 0.7 | 0.7 | 0.7 | | 0.7 |
| 09 | 64 | SEAT BELT COURROIE DE SIÈGE | 0.3 | 0.3 | 0.3 | 0.3 | 0.3 | 0.3 | 0.3 | 0.3 |
| 09 | 65 | MIRROR (1) RÉTROVISEUR (1) | | | 0.3 | 0.3 | 0.3 | 0.3 | 0.3 | |
| 09 | 66 | MIRRORS (2) RÉTROVISEURS (2) | | | 0.3 | 0.3 | 0.3 | 0.3 | 0.3 | |
| 09 | 68 | HOOD GUIDE (RH or LH) GUIDE DE CAPOT (G ou D) | | | | | | | 0.3 | |
| 09 | 69 | LOWER OR UPPER HOOD HINGE (1) CHARNIÈRE INFÉRIEURE OU SUPPORT DE CABINE (1) | | | | | | | 0.6 | |
| 09 | 80 | FRONT GRILL (RH and/or LH) GRILLE AVANT (G et/ou D) | 0.3 | 0.3 | 0.3 | 0.3 | 0.3 | 0.3 | 0.3 | 0.3 |
| 09 | 81 | SIDE GRILL (RH and/or LH) GRILLE LATÉRALE (G et/ou D) | 0.3 | 0.3 | 0.3 | 0.3 | 0.3 | 0.3 | 0.3 | 0.3 |



A32H0KS

| SYSTEM SYSTÈME | CODE | DESCRIPTION | MX Z 600 ADRENALINE/RENEGADE | MX Z 600 SPORT MX Z 600 TRAIL | LEGEND 600 SE/GS | LEGEND 600 SPORT | GRAND TOURING 600 SE/GS | GRAND TOURING 600 SPORT | SKANDIC 600 WT | SUMMIT 600 SPORT |
|-------------------|------|-------------|---------------------------------|----------------------------------|---------------------|------------------|----------------------------|----------------------------|----------------|------------------|
| | | | 14 | 15 | 16 | 17 | 18 | 19 | 20 | 21 |

| | | | | | | | | | | |
|----|----|---|-----|-----|-----|-----|-----|-----|-----|-----|
| 10 | 00 | NO LABOR INVOLVED AUCUNE MAIN-D'OEUVRE IMPLIQUÉE | 0 | 0 | 0 | 0 | 0 | 0 | 0 | 0 |
| 10 | 01 | IGNITION SWITCH INTERRUPTEUR D'ALLUMAGE | 0.3 | 0.3 | 0.3 | 0.3 | 0.3 | 0.3 | 0.3 | 0.3 |
| 10 | 02 | DIMMER SWITCH COMMUTATEUR D'ÉCLAIRAGE | 0.3 | 0.3 | 0.3 | 0.3 | 0.3 | 0.3 | 0.3 | 0.3 |
| 10 | 05 | BRAKE LIGHT SWITCH INTERRUPTEUR DE FEU D'ARRÊT | 0.3 | 0.3 | 0.3 | 0.3 | 0.3 | 0.3 | 0.3 | 0.3 |
| 10 | 06 | TETHER CORD SWITCH OR DESS CAPUCHON COUPE-CIRCUIT OU DESS | 0.3 | 0.3 | 0.3 | 0.3 | 0.3 | 0.3 | 0.3 | 0.3 |
| 10 | 07 | IGNITION SWITCH BLOCK LOGEMENT DE RÉCEPTACLE (interrupteur) | 0.3 | 0.3 | 0.3 | 0.3 | 0.3 | 0.3 | 0.3 | 0.3 |
| 10 | 08 | CURRENT OR GROUND WIRE FIL DE BATTERIE OU DE MASSE | | | 0.3 | 0.3 | 0.3 | 0.3 | 0.3 | |
| 10 | 09 | HEADLAMP ASS'Y (all parts) PHARE COMPLET(toutes les pièces) | 0.3 | 0.3 | 0.3 | 0.3 | 0.3 | 0.3 | 0.3 | 0.3 |
| 10 | 10 | VOLTAGE REGULATOR RÉGULATEUR DE TENSION | 0.3 | 0.3 | 0.3 | 0.3 | 0.3 | 0.3 | 0.3 | 0.3 |
| 10 | 12 | TAIL LIGHT ASS'Y (all parts) FEU ARRIÈRE COMPLET (toutes les pièces) | 0.3 | 0.3 | 0.3 | 0.3 | 0.3 | 0.3 | 0.3 | 0.3 |
| 10 | 13 | BATTERY RACK, RETAINER ROD AND/OR RETAINER BATTERIE SUPPORT, TIGE DE RETENUE ET/OU COUVERCLE DE RETENU | | | 0.3 | 0.3 | 0.3 | 0.3 | 0.3 | |
| 10 | 15 | HEATED GRIPS POIGNÉES CHAUFFANTES | 0.4 | 0.4 | 0.4 | 0.4 | 0.4 | 0.4 | 0.4 | 0.4 |
| 10 | 16 | BULBS (one or all) AMPOULES (une ou toutes) | 0.3 | 0.3 | 0.3 | 0.3 | 0.3 | 0.3 | 0.3 | 0.3 |
| 10 | 18 | HEAT GRIP SWITCH (1) INTERRUPTEUR (poignée/manette d'accélérateur chauffante) (1) | 0.3 | 0.3 | 0.3 | 0.3 | 0.3 | 0.3 | 0.3 | 0.3 |
| 10 | 19 | HEAT GRIP SWITCHES (2) INTERRUPTEURS (poignée/manette d'accélérateur chauffante) (2) | 0.3 | 0.3 | 0.3 | 0.3 | 0.3 | 0.3 | 0.3 | 0.3 |
| 10 | 20 | BACK UP BUZZER AVERTISSEUR DE MARCHE ARRIÈRE | 0.3 | 0.3 | 0.3 | 0.3 | 0.3 | 0.3 | 0.3 | 0.3 |
| 10 | 27 | REVERSE KNOB BOUTON DE MARCHE ARRIÈRE | 0.3 | 0.3 | 0.3 | 0.3 | 0.3 | 0.3 | 0.3 | 0.3 |

CLAIM TYPE 02 RÉCLAMATION DE TYPE 02

| SYSTEM SYSTÈME | CODE | DESCRIPTION | MX Z 600 ADRENALINE/RENEGADE | MX Z 600 SPORT MX Z 600 TRAIL | LEGEND 600 SE/GS | LEGEND 600 SPORT | GRAND TOURING 600 SE/GS | GRAND TOURING 600 SPORT | SKANDIC 600 WT | SUMMIT 600 SPORT |
|-------------------|------|---|---------------------------------|----------------------------------|---------------------|------------------|----------------------------|----------------------------|----------------|------------------|
| | | | 14 | 15 | 16 | 17 | 18 | 19 | 20 | 21 |
| 11 | 00 | NO LABOR INVOLVED AUCUNE MAIN-D'OEUVRE IMPLIQUÉE | 0 | 0 | 0 | 0 | 0 | 0 | 0 | 0 |

FLAT RATE TIME SUGGESTION

DEALER'S NO.: _____ DATE: _____

DEALER'S NAME: _____

FILE IDENTIFICATION NO.: _____

ADDRESS: _____

| YEAR | MODEL DESCRIPTION | OPERATION | JOB CODE | PRESENT FLAT RATE | SUGGESTED FLAT RATE |
|------|-------------------|-----------|-------------|----------------------|------------------------|
| | | | | | |

Detailed procedure used:

Signature: _____

BOMBARDIER
RECREATIONAL PRODUCTS
WARRANTY DEPARTMENT
75, J.A. BOMBARDIER ST.
SHERBROOKE (QUEBEC)
CANADA, J1L 1W3

FAX NUMBER: 819-566-3590

**BARÈME DE TEMPS À TAUX FIXE
SUGGESTION**

N° DU CONCESSIONNAIRE: _____ DATE: _____

NOM DU CONCESSIONNAIRE: _____

N° D'IDENTIFICATION DU DOSSIER: _____

ADRESSE: _____

| ANNÉE | DESCRIPTION DU MODÈLE | OPÉRATION | CODE DE TRAVAUX | TTP ACTUEL | TTP SUGGÉRÉ |
|-------|-----------------------|-----------|-----------------|------------|-------------|
| | | | | | |

Détails de la marche à suivre:

Signature: _____

BOMBARDIER
PRODUITS RÉCRÉATIF

SERVICE DE GARANTIE
75, RUE J.-A. BOMBARDIER
SHERBROOKE (QUÉBEC)
CANADA, J1L 1W3

N° DU TÉLÉCOPIEUR: 819-566-3590