

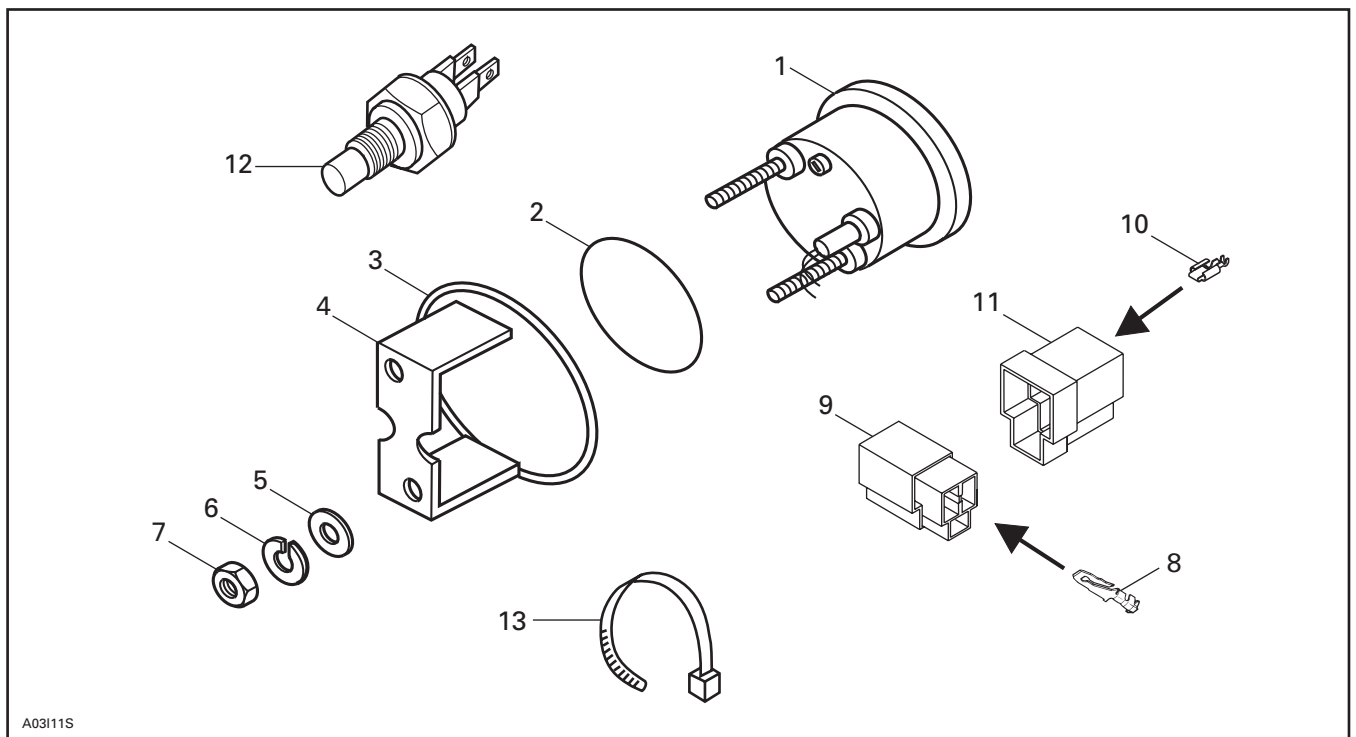
**TEMPERATURE GAUGE KIT
(P/N 861 505 800)**

⚠ WARNING

For safety reasons, this kit must be installed by an authorized Ski-Doo® snowmobile dealer. Should removal of a locking device (e.g. lock tabs, self-locking fasteners, etc.) be required when undergoing disassembly/assembly, always replace with a new one. This instruction sheet should be given to the purchaser. This kit is designed for specific applicable models only. It is not recommended for units other than those for which it was sold.

NOTE: Installation time is approximately 0.5 hour.

PARTS TO BE INSTALLED



- 1. Temperature Gauge
- 2. Gauge Packing
- 3. Formed Washer
- 4. Gauge Holder
- 5. Flat Washer (2)
- 6. Lock Washer (2)
- 7. Nut (2)

- 8. Male Connector (3)
- 9. 3-Connector Male Housing
- 10. Female Connector (3)
- 11. 3-Connector Female Housing
- 12. Analogic Temperature Sensor
- 13. Locking Tie

TEMPERATURE SENSOR

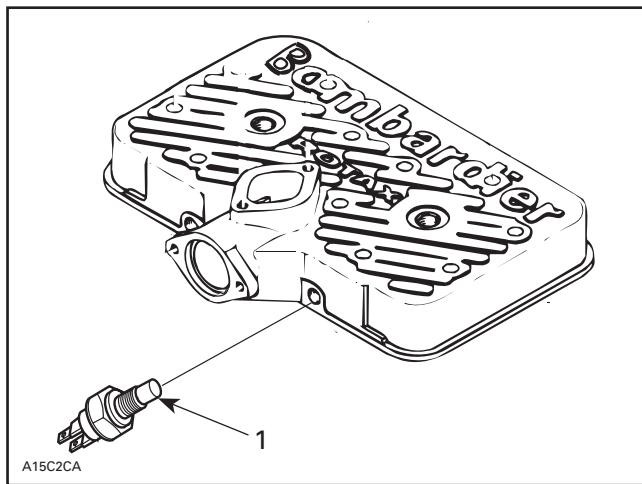
WARNING

This procedure must be performed when engine is cold and turned off.

Disconnect connectors from temperature sensor on engine.

Apply pipe sealant (P/N 293 800 018) on threads of new sensor **no. 12**.

NOTE: The new sensor is a variable resistor instead of a thermo-switch.



1. Sensor

Unscrew sensor from engine and quickly plug hole using your finger until ready to install new sensor.

Install new sensor.

Torque sensor to 6 N•m (53 lbf•in).

Reconnect connectors (polarity is not important).

Unplug VIOLET wire from 3-connector housing and move it to the free slot. (Connector location is near the water expansion tank).

Reinstall connector and bracket.

TEMPERATURE GAUGE

Remove windshield, if necessary.

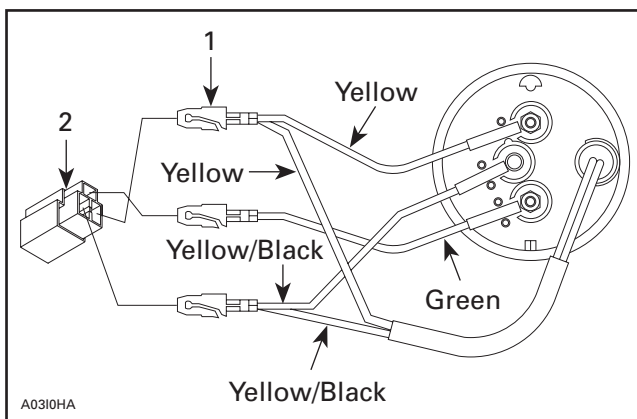
Remove intake cover, if equipped.

Position template (supplied on last page of this instruction sheet) over dashboard decal. Using a hole saw, drill a 63.5 mm (2.5 in) hole in LH side of dashboard.

WARNING

Make sure there are no wires behind dashboard in order to avoid any damages.

Install male connectors **no. 8** on wires and position in 3-connector housing **no. 9** as per the following illustration.



1. Male connector
2. 3-connector housing

Skandic WT LC Model Only

Remove 4-connector housing and previous connectors.

Replace them with 3-connector female housing **no. 11** and female connector **no. 10**.

All Models

Install gauge packing **no. 2** on temperature gauge **no. 1** then install into dashboard.

Install formed washer **no. 3** then gauge holder **no. 4**.

Install washers **no. 5**, lock washers **no. 6** and tighten with nuts **no. 7**.

Connect housing.

Secure gauge harness with locking tie **no. 13**.

Reinstall intake cover, if equipped.

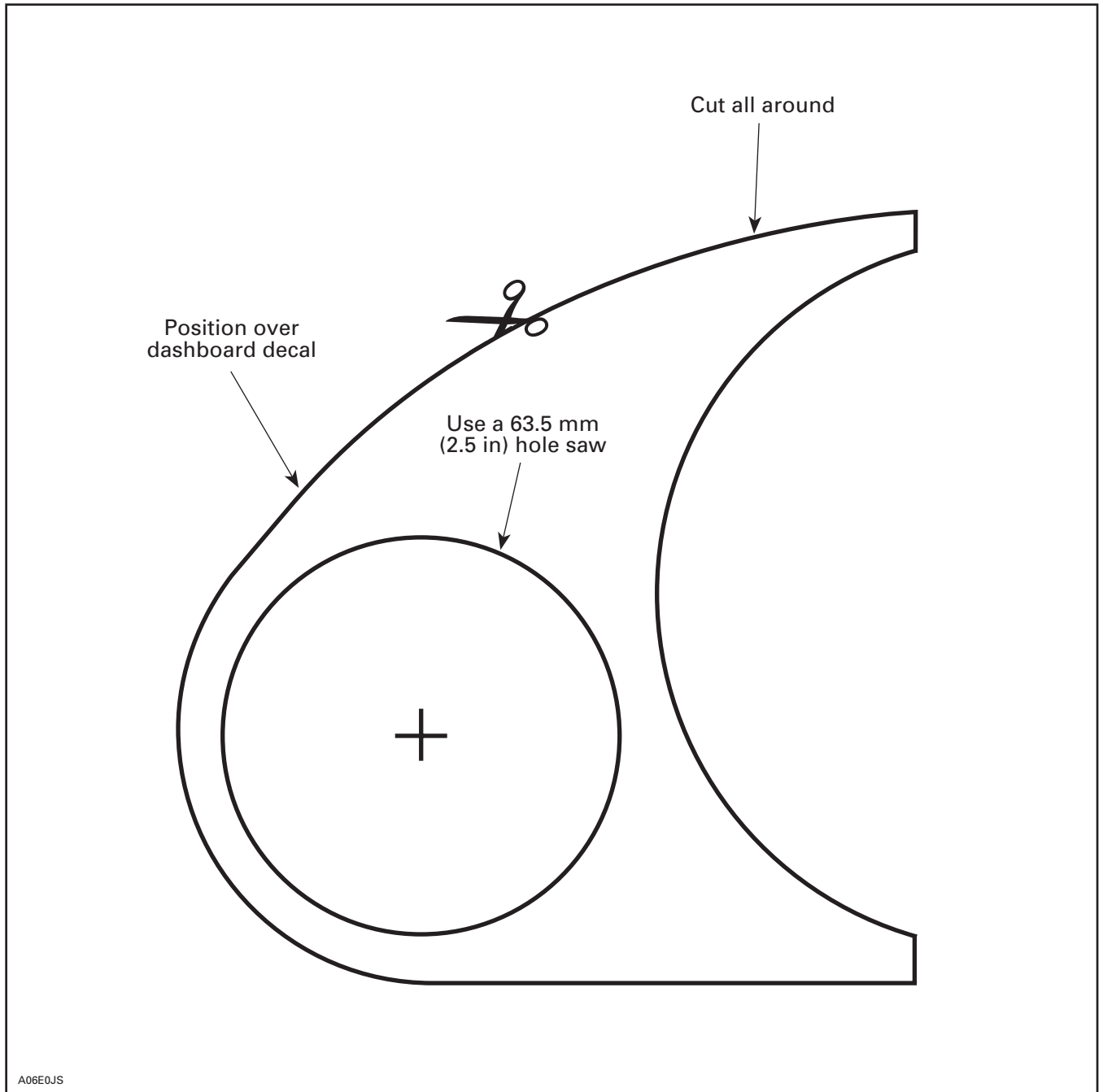
Reinstall windshield, if necessary.

Test gauge operation and ensure there are no fluid leaks at sender.

Replenish cooling system if necessary.

DRILLING TEMPLATE

Use this template to properly drill hole for gauge in dashboard.
Hole is to be drilled on left hand side.



861 505 800

1.	515 175 342	Temperature Gauge	Indicateur de température
2.	414 807 200	Gauge Packing	Joint torique
3.	517 258 600	Formed Washer	Rondelle formée
4.	414 806 600	Gauge Holder	Support d'indicateur
5.	391 301 700	Flat Washer (2)	Rondelle plate (2)
6.	414 833 700	Lock Washer (2)	Rondelle-frein (2)
7.	414 833 600	Nut (2)	Écrou (2)
8.	409 210 000	Male Connector (3)	Raccord mâle (3)
9.	409 209 300	3-Connector Male Housing	Logement de raccords mâles à 3 circuits
10.	515 175 253	Female Connector (3)	Raccord femelle (3)
11.	409 204 300	3-Connector Female Housing	Logement de raccords femelles à 3 circuits
12.	414 728 700	Analogic Temperature Sensor	Sonde de température analogique
13.	414 115 200	Locking Tie	Attache