

BARÈME DE TEMPS À TAUX FIXE
FLAT RATE TIME SCHEDULE

Bombardier

ski-doo[®]

MOTONEIGES

2001

SNOWMOBILES

VOLUME 2

453cc / 493cc / 593cc

LIQUID COOLED 2 CYL. MODELS
MODÈLES 2 CYL. REFROIDIS PAR LIQUIDE

FORMULA DELUXE STD 500 / 600, FORMULA DELUXE GSE 600
GRAND TOURING STD 500 / 600
MX Z X 440
MX Z STD 500 / 600 / MX Z ADRENALINE 600
MX Z TRAIL 500 / 600, MX Z 600 X
SUMMIT STD 600
SKANDIC 600 WT LC

En vigueur le 20 octobre 2000. Effective October 20th, 2000
Sujet à révision sans préavis, ni délais. Subject to review from time to time, without notice or delay.

LIQUID COOLED TWIN CYLINDERS – 2 CYLINDRES REFROIDIS PAR LIQUIDE

DESCRIPTION	MODÈLE MODEL	ENGINE MOTEUR	REV MARC ARRI	STAR/ELEC DÉM ÉLEC	CHASSIS CADRE	REAR SUSP SUSP/ARRI	DRIVE PULLEY POULIE MOTRICE	DRIVEN PULLEY POULIE MENÉE
MX Z X 400 RACING CDN/US	1715	453	N/a	N/a	Zx	SC-10 II	C.D T.R.A.C	FORM
MX Z X 400 RACING EUR	1716	453	N/a	N/a	zx	SC-10 II	C.D T.R.A.C	FORM
MX Z 500 STD NOIR CDN	1713	493	Opt	Opt	ZX	SC-10 II	C.D T.R.A.C	FORM
MX Z 500 STD BLACK US	1714	493	Opt	Opt	ZX	SC-10 II	C.D T.R.A.C	FORM
MX Z 500 STD JAUNE DN	1710	493	Opt	Opt	ZX	SC-10 II	C.D T.R.A.C	FORM
MX Z 500 STD JAUNE EUR	1712	493	Opt	Opt	ZX	SC-10 II	C.D T.R.A.C	FORM
MX Z 500 STD YELLOW US	1711	493	Opt	Opt	ZX	SC-10 II	C.D T.R.A.C	FORM
MX Z 500 TRAIL NOIR CDN	1708	493	Opt	Opt	ZX	SC-10 II	C.D T.R.A.C	FORM
MX Z 500 TRAIL BLACK US	1709	493	Opt	Opt	ZX	SC-10 II	C.D T.R.A.C	FORM
MX Z 500 TRAIL JAUNE CDN	1706	493	Opt	Opt	ZX	SC-10 II	C.D T.R.A.C	FORM
MX Z 500 TRAIL YELLOW US	1707	493	Opt	Opt	ZX	SC-10 II	C.D T.R.A.C	FORM
FOR. DLX 500 STD NUAGE CDN	1780	493	STD	STD	ZX	SC-10 II	C.D T.R.A.C	FORM
FOR. DLX 500 STD CLOUD US	1781	493	STD	STD	ZX	SC-10 II	C.D T.R.A.C	FORM
FOR. DLX 500 STD ROUGE CDN	1778	493	STD	STD	ZX	SC-10 II	C.D T.R.A.C	FORM
FOR. DLX 500 STD RED US	1779	493	STD	STD	ZX	SC-10 II	C.D T.R.A.C	FORM
G.TOURING 500 STD NOIR CDN	1799	493	STD	STD	ZX LT	SC-10 II LT	C.D T.R.A.C	FORM
G.TOURING 500 STD BLACK US	1800	493	STD	STD	ZX LT	SC-10 II LT	C.D T.R.A.C	FORM
G.TOURING 500 STD NOIR EUR	1801	493	STD	STD	ZX LT	SC-10 II LT	C.D T.R.A.C	FORM
G.TOURING 500 STD NUAGE CDN	1802	493	STD	STD	ZX LT	SC-10 II LT	C.D T.R.A.C	FORM
G.TOURING 500 STD CLOUD US	1803	493	STD	STD	ZX LT	SC-10 II LT	C.D T.R.A.C	FORM
MX Z 600 ADRN. NOIR CDN	1697	593	OPT	OPT	ZX	SC-10 II	C.D T.R.A.C	FORM
MX Z 600 ADRN. BLACK US	1698	593	OPT	OPT	ZX	SC-10 II	C.D T.R.A.C	FORM
MX Z 600 ADRN. ROUGE CDN	1699	593	OPT	OPT	ZX	SC-10 II	C.D T.R.A.C	FORM
MX Z 600 ADRN. RED US	1700	593	OPT	OPT	ZX	SC-10 II	C.D T.R.A.C	FORM
MX Z 600 ADRN. JAUNE CDN	1695	593	OPT	OPT	ZX	SC-10 II	C.D T.R.A.C	FORM
MX Z 600 ADRN. YELLOW US	1696	593	OPT	OPT	ZX	SC-10 II	C.D T.R.A.C	FORM
MX Z 600 STD NOIR CDN	1704	593	OPT	OPT	ZX	SC-10 II	C.D T.R.A.C	FORM
MX Z 600 STD BLACK US	1705	593	OPT	OPT	ZX	SC-10 II	C.D T.R.A.C	FORM
MX Z 600 STD JAUNE CDN	1701	593	OPT	OPT	ZX	SC-10 II	C.D T.R.A.C	FORM
MX Z 600 STD JAUNE EUR	1703	593	OPT	OPT	ZX	SC-10 II	C.D T.R.A.C	FORM
MX Z 600 STD YELLOW US	1702	593	OPT	OPT	ZX	SC-10 II	C.D T.R.A.C	FORM
MX Z 600 TRAIL NOIR CDN	1693	593	OPT	OPT	ZX	SC-10 II	C.D T.R.A.C	FORM
MX Z 600 TRAIL BLACK US	1694	593	OPT	OPT	ZX	SC-10 II	C.D T.R.A.C	FORM
MX Z 600 TRAIL JAUNE CDN	1691	593	OPT	OPT	ZX	SC-10 II	C.D T.R.A.C	FORM
MX Z 600 TRAIL YELLOW US	1692	593	OPT	OPT	ZX	SC-10 II	C.D T.R.A.C	FORM
MX Z 600 X NOIR CDN	1827	593	OPT	OPT	ZX	SC-10 II	C.D T.R.A.C	FORM
MX Z 600 X BLACK US	1828	593	OPT	OPT	ZX	SC-10 II	C.D T.R.A.C	FORM
MX Z 600 X ROUGE CDN	1829	593	OPT	OPT	ZX	SC-10 II	C.D T.R.A.C	FORM
MX Z 600 X RED US	1830	593	OPT	OPT	ZX	SC-10 II	C.D T.R.A.C	FORM

LIQUID COOLED TWIN CYLINDERS – 2 CYLINDRES REFROIDIS PAR LIQUIDE

DESCRIPTION	MODÈLE MODEL	ENGINE MOTEUR	REV MARC ARRI	STAR/ELEC DÉM ÉLEC	CHASSIS CADRE	REAR SUSP SUSP/ARRI	DRIVE PULLEY POULIE MOTRICE	DRIVEN PULLEY POULIE MENÉE
MX Z 600 X JAUNE CDN	1825	593	OPT	OPT	ZX	SC-10 II	C.D T.R.A.C	FORM
MX Z 600 X YELLOW US	1826	593	OPT	OPT	ZX	SC-10 II	C.D T.R.A.C	FORM
FOR.DLX 600 GSE NUAGE CDN	1833	593	STD	STD	ZX	SC-10 II	C.D T.R.A.C	FORM
FOR.DLX 600 GSE CLOUD US	1834	593	STD	STD	ZX	SC-10 II	C.D T.R.A.C	FORM
FOR.DLX 600 GSE ROUGE CDN	1831	593	STD	STD	ZX	SC-10 II	C.D T.R.A.C	FORM
FOR.DLX 600 GSE RED US	1832	593	STD	STD	ZX	SC-10 II	C.D T.R.A.C	FORM
FOR.DLX 600 STD NUAGE CDN	1775	593	STD	STD	ZX	SC-10 II	C.D T.R.A.C	FORM
FOR.DLX 600 STD CLOUD US	1776	593	STD	STD	ZX	SC-10 II	C.D T.R.A.C	FORM
FOR.DLX 600 STD NUAGE EUR	1777	593	STD	STD	ZX	SC-10 II	C.D T.R.A.C	FORM
FOR.DLX 600 STD ROUGE CDN	1773	593	STD	STD	ZX	SC-10 II	C.D T.R.A.C	FORM
FOR.DLX 600 STD RED US	1774	593	STD	STD	ZX	SC-10 II	C.D T.R.A.C	FORM
G.TOURING 600 STD NOIR CDN	1794	593	STD	STD	ZX LT	SC-10 II LT	C.D T.R.A.C	FORM
G.TOURING 600 STD BLACK US	1795	593	STD	STD	ZX LT	SC-10 II LT	C.D T.R.A.C	FORM
G.TOURING 600 STD NOIR EUR	1796	593	STD	STD	ZX LT	SC-10 II LT	C.D T.R.A.C	FORM
G.TOURING 600 STD NUAGE CDN	1797	593	STD	STD	ZX LT	SC-10 II LT	C.D T.R.A.C	FORM
G.TOURING 600 STD CLOUD US	1798	593	STD	STD	ZX LT	SC-10 II LT	C.D T.R.A.C	FORM
SKANDIC 600 WT LC JAUNE CDN	1810	593	STD	STD	SK WT	A. SLIDE	C.D T.R.A.C	T.BUSH
SKANDIC 600 WT LC YELLOW US	1811	593	STD	STD	SK WT	A. SLIDE	C.D T.R.A.C	T.BUSH
SUMMIT 600 STD NOIR CDN	1760	593	OPT	OPT	ZX LT	SC-10 M	C.D T.R.A.C	FORM
SUMMIT 600 STD BLACK US	1761	593	OPT	OPT	ZX LT	SC-10 M	C.D T.R.A.C	FORM
SUMMIT 600 STD JAUNE CDN	1758	593	OPT	OPT	ZX LT	SC-10 M	C.D T.R.A.C	FORM
SUMMIT 600 STD YELLOW US	1759	593	OPT	OPT	ZX LT	SC-10 M	C.D T.R.A.C	FORM

LIQUID COOLED TWIN CYLINDERS - 2 CYLINDRES REFROIDIS PAR LIQUIDE

ENGINE TYPE TYPE DE MOTEUR	453			493			593				
CHASSIS TYPE TYPE DE CHASSIS	ZX	ZX	ZX	ZX LT	ZX	ZX	ZX	ZX	ZX LT	SK	ZX LT
CARBURETOR CARBURATEUR	TMX-34	VM-38	VM-38	VM-38	XTM-40	XTM-40	Heated XTM-40	Heated XTM-40	Heated XTM-40	VM-38	XTM-40
DPM					DPM		DPM				DPM
MODELS MODÈLES	1715	1706	1778	1799	1695	1691	1831	1773	1794	1810	1758
	1716	1707	1779	1800	1696	1692	1832	1774	1795	1811	1759
		1708	1780	1801	1697	1693	1833	1775	1796		1760
		1709	1781	1802	1698	1694	1834	1776	1797		1761
		1710		1803	1699	1701		1777	1798		
		1711			1700	1702					
		1712			1825	1703					
		1713			1826	1704					
		1714			1827	1705					
					1828						
					1829						
					1830						
TABLE	10	11	12	13	14	15	16	17	18	19	20

**ENGINE
MOTEUR**

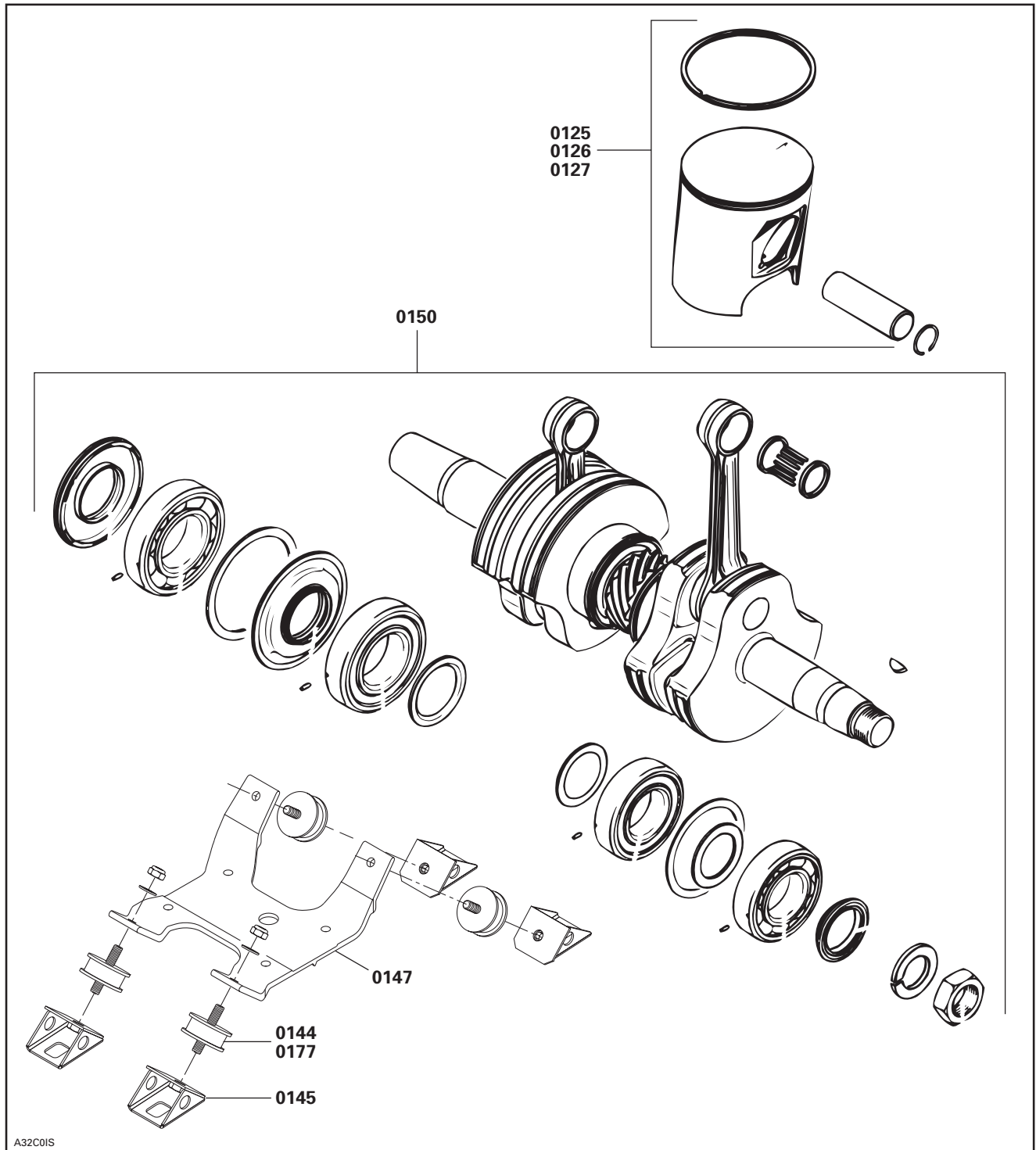
SYSTEM	CODE	SYSTEM 01 SYSTEME 01	MX Z X 440	MX Z 500 STD MX Z 500 TRAIL	FOR. DLX 500 STD	G. TOURING 500 STD	MX Z 600 X MX Z 600 ADRN	MX Z 600 STD MX Z 600 TRAIL	FOR. DLX 600 GSE	FOR. DLX 600 STD	G. TOURING 600 STD	SKANDIC 600 WT	SUMMIT 600 STD
			10	11	12	13	14	15	16	17	18	19	20

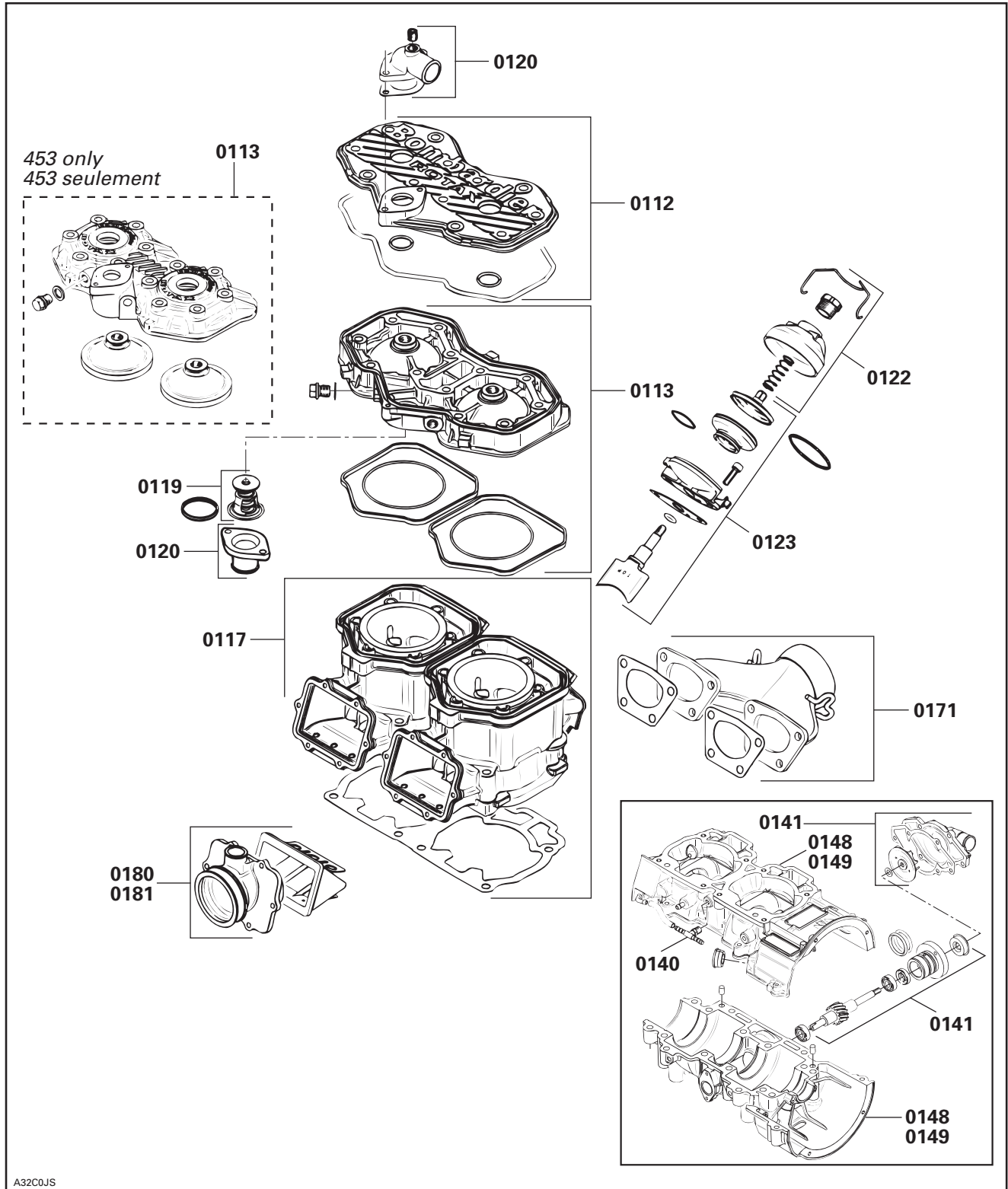
01 00	NO LABOR INVOLVED AUCUNE MAIN D'OEUVRE	0	0	0	0	0	0	0	0	0	0	0	0
01 01	ENGINE ASSY R. R. * REMPLACEMENT MOTEUR COMPLET	3.0	3.0	3.0	3.0	3.0	3.0	3.0	3.0	3.0	3.0	3.0	3.0
01 12	CYLINDER HEAD COVER AND/OR GASKET COUVERCLE DE CULASSE ET/OU JOINT		0.7	0.7	0.7	0.7	0.7	0.7	0.7	0.7	0.7	0.7	0.7
01 13	CYLINDER HEAD AND/OR GASKET (ONE) CULASSE ET/OU JOINT(1)	0.9	0.9	0.9	0.9	0.9	0.9	0.9	0.9	0.9	0.9	0.9	0.9
01 17	CYLINDERS AND/OR GASKETS (ALL) CYLINDRES ET/OU JOINTS (TOUS)	2.0	2.0	2.0	2.0	2.0	2.0	2.0	2.0	2.0	2.0	2.0	2.0
01 18	COOLANT TEMPERATURE SENDER CAPTEUR DE TEMPÉRATURE LIQUIDE	0.3	0.3	0.3	0.3	0.3	0.3	0.3	0.3	0.3	0.3	0.3	0.3
01 19	THERMOSTAT THERMOSTAT	0.3	0.3	0.3	0.3	0.3	0.3	0.3	0.3	0.3	0.3	0.3	0.3
01 20	WATER OUTLET SOCKET TUBULURE DE SORTIE DE LIQUIDE	0.7	0.7	0.7	0.7	0.7	0.7	0.7	0.7	0.7	0.7	0.7	0.7
01 22	RAVE ADJ. SCREW A/O COVER A/O SPRING VIS ET/OU COUVERCLE ET/OU RESSORT	0.4	0.4	0.4	0.4	0.4	0.4	0.4	0.4	0.4	0.4	0.4	0.4
01 23	RAVE VALVE AND/OR HOUSING SOUPAPE D'ÉCHAPPEMENT RAVE E/O BOITIER	0.6	0.6	0.6	0.6	0.6	0.6	0.6	0.6	0.6	0.6	0.6	0.6
01 25	PISTON, NEEDLE BEARING (MAG) PISTONS, AXE, FREIN D'AXE, SEG (MAG)	2.2	2.2	2.2	2.2	2.2	2.2	2.2	2.2	2.2	2.2	2.2	2.2
01 26	PISTON, NEEDLE BEARING (PTO) PISTON, AXE, FREIN D'AXE, SEG (PDM)	2.2	2.2	2.2	2.2	2.2	2.2	2.2	2.2	2.2	2.2	2.2	2.2
01 27	PISTONS, NEEDLE, BRNG (MAG+PTO) PISTONS, AXES, FREIN D'AXES, SEG, (MAG+PDM)	2.4	2.4	2.4	2.4	2.4	2.4	2.4	2.4	2.4	2.4	2.4	2.4
01 38	WATER PUMP SHAFT (ALL PARTS) L'ARBRE DE LA POMPE À L'EAU (TOUTES PIÈCES)	5.0	5.0	5.0	5.0	5.0	5.0	5.0	5.0	5.0	5.0	5.0	5.0
01 40	OIL INLET ANGULAR TUBE OR CHECK VALVE RACCORD ANGULAIRE OU SOUPAPE DE RETENUE	0.8	0.8	0.8	0.8	0.8	0.8	0.8	0.8	0.8	0.8	0.8	0.8
01 41	WATER PUMP IMPELLER/COVER/GASKET TURBINE/CARTER DE POMPE E/O JOINT D'ÉTANCHÉITÉ	0.9	0.9	0.9	0.9	0.9	0.9	0.9	0.9	0.9	0.9	0.9	0.9
01 44	ENGINE RUBBER MOUNTS (3 OR 4) TAMPONS D'ANCRAGE DE CAOUT. (3 OU 4)	1.1	1.1	1.1	1.1	1.1	1.1	1.1	1.1	1.1	1.1	1.5	1.1

**ENGINE
MOTEUR**

SYSTEM	CODE	SYSTEM 01 SYSTÈME 01	MX Z X 440	MX Z 500 STD MX Z 500 TRAIL	FOR.DLX 500 STD	G.TOURING 500 STD	MX Z 600 X MX Z 600 ADRN	MX Z 600 STD MX Z 600 TRAIL	FOR. DLX 600 GSE	FOR. DLX 600 STD	G.TOURING 600 STD	SKANDIC 600 WT	SUMMIT 600 STD
			10	11	12	13	14	15	16	17	18	19	20

01	45	ENGINE RUBBER MOUNTS SUPP (3 OR 4) SUPPORTS DE TAMPONS D'ANCRAGE (3 OU 4)	1.2	1.2	1.2	1.2	1.2	1.2	1.2	1.2	1.2	1.6	1.2
01	47	ENGINE SUPPORT SUPPORT DE MOTEUR	2.1	2.1	2.1	2.1	2.1	2.1	2.1	2.1	2.1	1.6	2.1
01	48	CRANKCASE REPLACEMENT REPLACEMENT DU CARTER	5.2	5.2	5.2	5.2	5.2	5.2	5.2	5.2	5.2	5.2	5.2
01	49	CRANKCASE RESEAL OR GASKETS RECELLEMENT DU CARTER E/O JOINTS D'ÉTANCHÉIÉS	5.0	5.0	5.0	5.0	5.0	5.0	5.0	5.0	5.0	5.0	5.0
01	50	CRANKSHAFT AND/OR BEARINGS VILEBREQUIN ET/OU ROULEMENT	4.8	4.8	4.8	4.8	4.8	4.8	4.8	4.8	4.8	4.8	4.8
01	71	EXHAUST MANIFOLD COLLECTEUR D'ÉCHAPPEMENT	0.3	0.3	0.3	0.3	0.3	0.3	0.3	0.3	0.3	0.3	0.3
01	72	TUNED PIPE TUYAU D'ÉCHAPPEMENT CALIBRÉ	0.3	0.3	0.3	0.3	0.3	0.3	0.3	0.3	0.3	0.3	0.3
01	75	MUFFLER/EXHAUST GROMMET/SUPPORT SILENCIEUX E/O BAGUE D'ÉCHAPPEMENT	0.3	0.3	0.3	0.3	0.3	0.3	0.3	0.3	0.3	0.3	0.3
01	77	ENGINE RUBBER MOUNTS (1 OR 2) TAMPONS D'ANCRAGE DU MOTEUR (1 OU 2)	1.0	1.0	1.0	1.0	1.0	1.0	1.0	1.0	1.0	0.5	1.0
01	79	COOLANT HOSE (TANK TO ENGINE HEAD) BOYAU DU SYST. REFROID (RESERVE AU MOTEUR)	0.3	0.3	0.3	0.3	0.3	0.3	0.3	0.3	0.3	0.3	0.3
01	80	REED VALVE/GASKET/FLANGE/SOCKET(1) VALVE REED/JOINT/FLASQUE/ADP (1)	0.3	0.3	0.3	0.3	0.3	0.3	0.3	0.3	0.3	0.3	0.3
01	81	REED VALVE/GASKET/FLANGE/SOCKET (2) VALVE REED/JOINT/FLASQUE/ADP (2)	0.4	0.4	0.4	0.4	0.4	0.4	0.4	0.4	0.4	0.4	0.4
01	84	TUNE PIPE SHIELD (1) COUILLE TUYAU D'ÉCHAPPEMENT (1)	0.3	0.3	0.3	0.3	0.3	0.3	0.3	0.3	0.3	0.3	0.3
01	98	COOLANT RESERVOIR RÉSERVOIR D'ANTIGEL	0.7	0.7	0.7	0.7	0.7	0.7	0.7	0.7	0.7	0.7	0.7
01	99	CRANKSHAFT REBUILT VILEBREQUIN RÉUSINÉ	4.8	4.8	4.8	4.8	4.8	4.8	4.8	4.8	4.8	4.8	4.8
01	104	SHORT BLOCK ENSEMBLE CARTER CYLINDRE	3.5	3.5	3.5	3.5	3.5	3.5	3.5	3.5	3.5	3.5	3.5





**CARBURETOR AND OIL INJECTION SYSTEM
CARBURATEUR ET SYSTÈME D'INJECTION D'HUILE**

SYSTEM	CODE	SYSTEM 02 SYSTÈME 02	MX Z X 440	MX Z 500 STD MX Z 500 TRAIL	FOR.DLX 500 STD	G.TOURING 500 STD	MX Z 600 X MX Z 600 ADRN	MX Z 600 STD MX Z 600 TRAIL	FOR.DLX 600 GSE	FOR.DLX 600 STD	G.TOURING 600 STD	SKANDIC 600 WT	SUMMIT 600 STD
			10	11	12	13	14	15	16	17	18	19	20

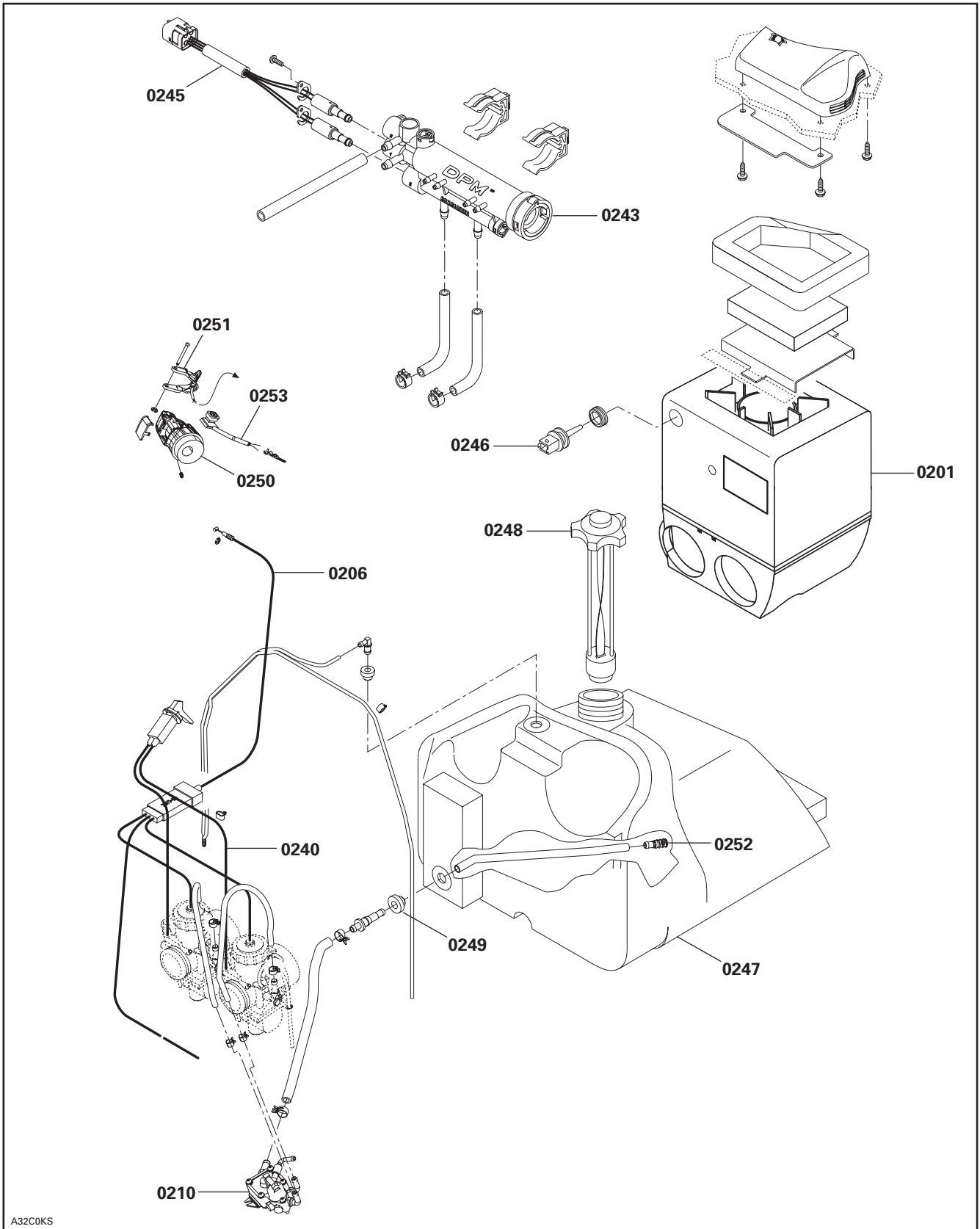
02 00	NO LABOR INVOLVED AUCUNE MAIN-D'ŒUVRE IMPLIQUÉE	0	0	0	0	0	0	0	0	0	0	0	0
02 01	AIR SILENCER ASS'Y ANY/OE ALL PARTS SILENCIEUX D'ADMISSION (TOUTE PIÈCES)	0.2	0.2	0.2	0.2	0.2	0.2	0.2	0.2	0.2	0.2	0.2	0.2
02 02	CARBURATOR ASS'Y (1) CARBURATEUR (1)		0.3	0.3	0.3							0.3	
02 03	CARBURATORS ASS'Y (2) CARBURATEURS (2)	0.5	0.5	0.5	0.5	0.6	0.5	0.8	0.7	0.7	0.5	0.6	
02 04	RUBBER FLANGE (1) BRIDE DE CAOUTCHOUC (1)	0.3	0.3	0.3	0.3	0.3	0.3	0.3	0.3	0.3	0.3	0.3	0.3
02 06	THROTTLE CABLE CABLE D'ACCÉLÉRATEUR	0.3	0.3	0.3	0.3	0.3	0.3	0.3	0.3	0.3	0.3	0.3	0.3
02 07	PRIMER AMORCEUR	0.3											
02 08	OIL INJECTION PUMP POMPE À INJECTION D'HUILE		1.1	1.1	1.1	1.1	1.1	1.1	1.1	1.1	1.1	1.1	1.1
02 09	OIL INJECTION RESERVOIR RÉSERVOIR D'HUILE À INJECTION		0.5	0.5	0.5	0.5	0.5	0.5	0.5	0.5	0.5	0.5	0.5
02 10	FUEL PUMP POMPE À CARBURANT	0.4	0.4	0.4	0.4	0.4	0.4	0.4	0.4	0.4	0.4	0.4	0.4
02 11	FLOAT SYST ANY/OR ALL PTS ONE CARB SYSTÈME DE FLOTTEUR TOUTES PIÈCES 1 CARBURATEUR	0.8	0.5	0.5	0.5	0.9	0.8	1.1	1.0	1.0	0.5	0.9	
02 12	FLOAT SYST ANY/OR ALL PTS TWO CARBS SYSTÈME DE FLOTTEUR TOUTES PCS 2 CARBURATEURS	0.9	0.7	0.7	0.7	1.0	0.9	1.2	1.1	1.1	0.7	1.0	
02 13	JET NEEDLE, THROTTLE SLIDE (ONE) AIGUILLE DE GICLEUR, TIROIR D'ÉTRANGLEUR (1)	0.4	0.3	0.3	0.3	0.5	0.4	0.7	0.6	0.6	0.3	0.5	
02 14	JET NEEDLES, THROTTLE SLIDE (TWO) AIGUILLES DE GICLEUR, TIROIR D'ÉTRANGLEUR (2)	0.5	0.4	0.4	0.4	0.6	0.5	0.8	0.7	0.7	0.4	0.6	
**	CARB CLEANING AND REBUILDING (ONE) NETTOYAGE ET REMONTAGE DU CARBURATEUR (1)	0.6	0.5	0.5	0.5	0.7	0.6	0.9	0.8	0.8	0.5	0.7	
**	CARBS CLEANING AND REBUILDING (TWO) NETTOYAGE ET REMONTAGE DU CARBURATEUR (2)	1.0	0.9	0.9	0.9	1.1	1.0	1.2	1.1	1.1	0.9	1.1	

**CARBURETOR AND OIL INJECTION SYSTEM
CARBURATEUR ET SYSTÈME D'INJECTION D'HUILE**

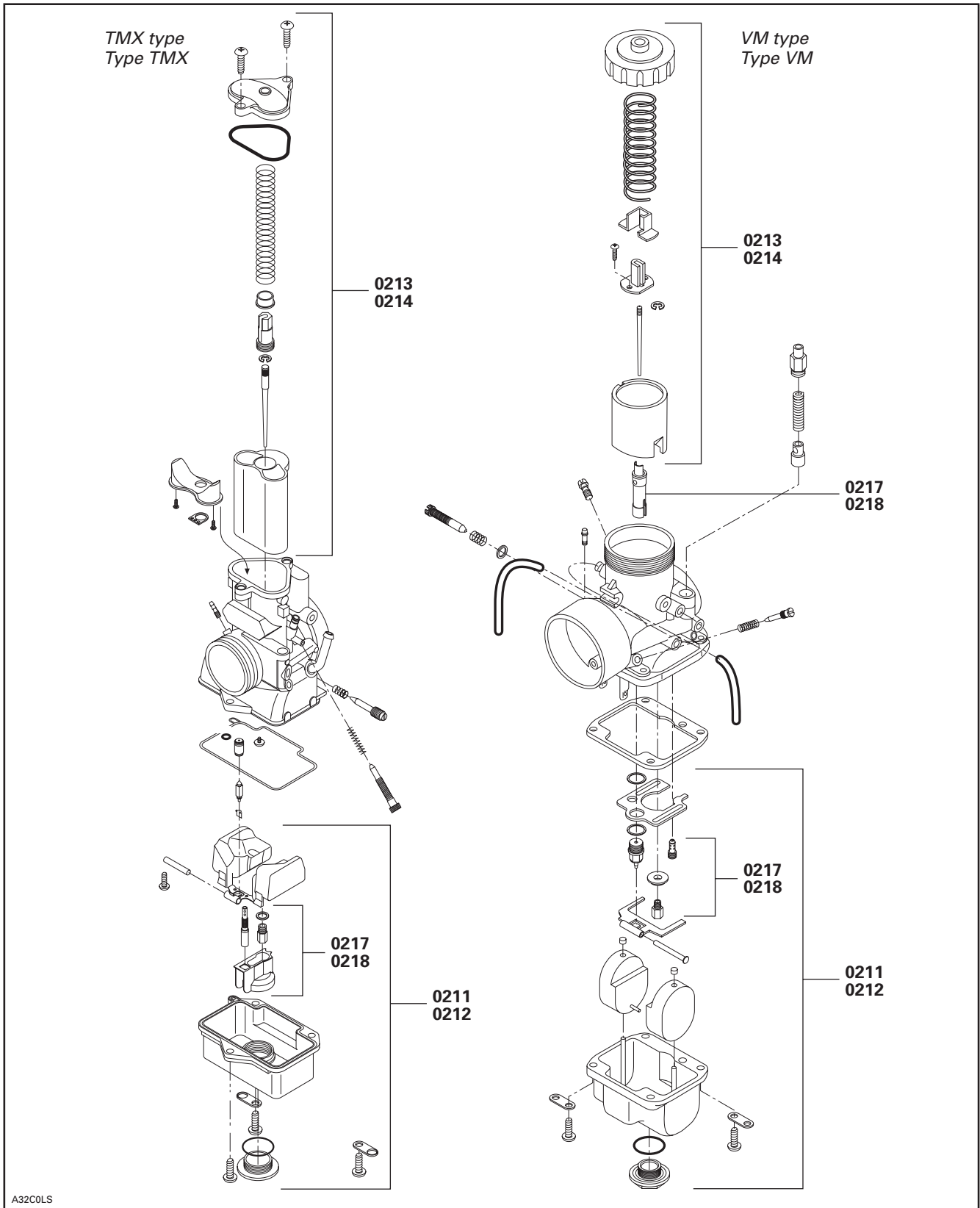
SYSTEM	CODE	SYSTEM 02 SYSTÈME 02	MX Z X 440	MX Z 500 STD MX Z 500 TRAIL	FOR.DLX 500 STD	G.TOURING 500 STD	MX Z 600 X MX Z 600 ADRN	MX Z 600 STD MX Z 600 TRAIL	FOR.DLX 600 GSE	FOR.DLX 600 STD	G.TOURING 600 STD	SKANDIC 600 WT	SUMMIT 600 STD
			10	11	12	13	14	15	16	17	18	19	20

02	17	MAIN JET, NEEDLE JET, PILOT JET (ONE) GICLEUR PRINCIPAL/AIGUILLE/RALENTIE (1)	0.6	0.4	0.4	0.4	0.7	0.6	0.9	0.8	0.8	0.4	0.7
02	18	MAIN JET, NEEDLE JET, PILOT JET (TWO) GICLEUR PRINCIPAL/AIGUILLE/RALENTIE (2)	0.8	0.6	0.6	0.6	0.9	0.8	1.1	1.0	1.0	0.6	0.9
02	24	OIL INJECTION FILTER FILTRE D'HUILE À INJECTION		0.3	0.3	0.3	0.3	0.3	0.3	0.3	0.3	0.3	0.3
02	25	OIL INJECTION LINE (1) BOYAU D'HUILE À INJECTION (1)		0.8	0.8	0.8	0.8	0.8	0.8	0.8	0.8	0.8	0.8
02	26	OIL INJECTION LINES (2) BOYAUX D'HUILE À INJECTION (2)		0.9	0.9	0.9	0.9	0.9	0.9	0.9	0.9	0.9	0.9
02	27	OIL LEVER SENSOR CONTACTEUR DE NIVEAU D'HUILE		0.5	0.5	0.5	0.5	0.5	0.5	0.5	0.5	0.5	0.5
02	40	CHOKE CABLE CABLE D'ÉTRANGLEUR		0.3	0.3	0.3	0.3	0.3	0.3	0.3	0.3	0.3	0.3
02	43	PRESSURE MANIFOLD ASS'Y (D.P.M) COLLECTEUR DE PRESSION ASS. (D.P.M)					0.4		0.4				0.4
02	45	PRESSURE MANIFOLD HARNESS (D.P.M) CABLAGE COLLECTEUR DE PRESSION (D.P.M)					0.3		0.3				0.3
02	46	AIR TEMPERATURE SENSOR (AIR INTAKE) CAPTEUR D'AIR DE TEMPERATURE (SILENCIEUX D'ADMISSION)					0.2		0.2				0.2
02	47	FUEL TANK RÉSERVOIR À ESSENCE	0.5	0.5	0.5	0.5	0.5	0.5	0.5	0.5	0.5	0.5	0.5
02	48	FUEL CAP BOUCHON DU RÉSERVOIR À ESSENCE	0.1	0.1	0.1	0.1	0.1	0.1	0.1	0.1	0.1	0.1	0.1
02	49	FUEL TANK GROMMET RONDELLE ISOLANTE RÉSERVOIR À ESSENCE	0.5	0.5	0.5	0.5	0.5	0.5	0.5	0.5	0.5	0.5	0.5
02	50	THROTTLE HANDLE HOUSING LOGEMENT DE MANETTE D'ACCÉLÉRATEUR	0.4	0.4	0.4	0.4	0.4	0.4	0.4	0.4	0.4	0.4	0.4
02	51	HEATER THROTTLE LEVER MANETTE D'ACCÉLÉRATEUR CHAUFFANTE	0.3	0.3	0.3	0.3	0.3	0.3	0.3	0.3	0.3	0.3	0.3
02	52	FUEL FILTER FILTRE À CARBURANT	0.5	0.5	0.5	0.5	0.5	0.5	0.5	0.5	0.5	0.5	0.5
02	53	KILL SWITCH INTERRUPTEUR D'URGENCE	0.3	0.3	0.3	0.3	0.3	0.3	0.3	0.3	0.3	0.3	0.3
02	65	FUEL SENSOR ASS'Y CAPTEUR DE NIVEAU D'ESSENCE ASS.							0.5				

CARBURETOR AND OIL INJECTION SYSTEM 02
CARBURATEUR ET SYSTÈME D'INJECTION D'HUILE 02



CARBURETOR AND OIL INJECTION SYSTEM 02
CARBURATEUR ET SYSTÈME D'INJECTION D'HUILE 02

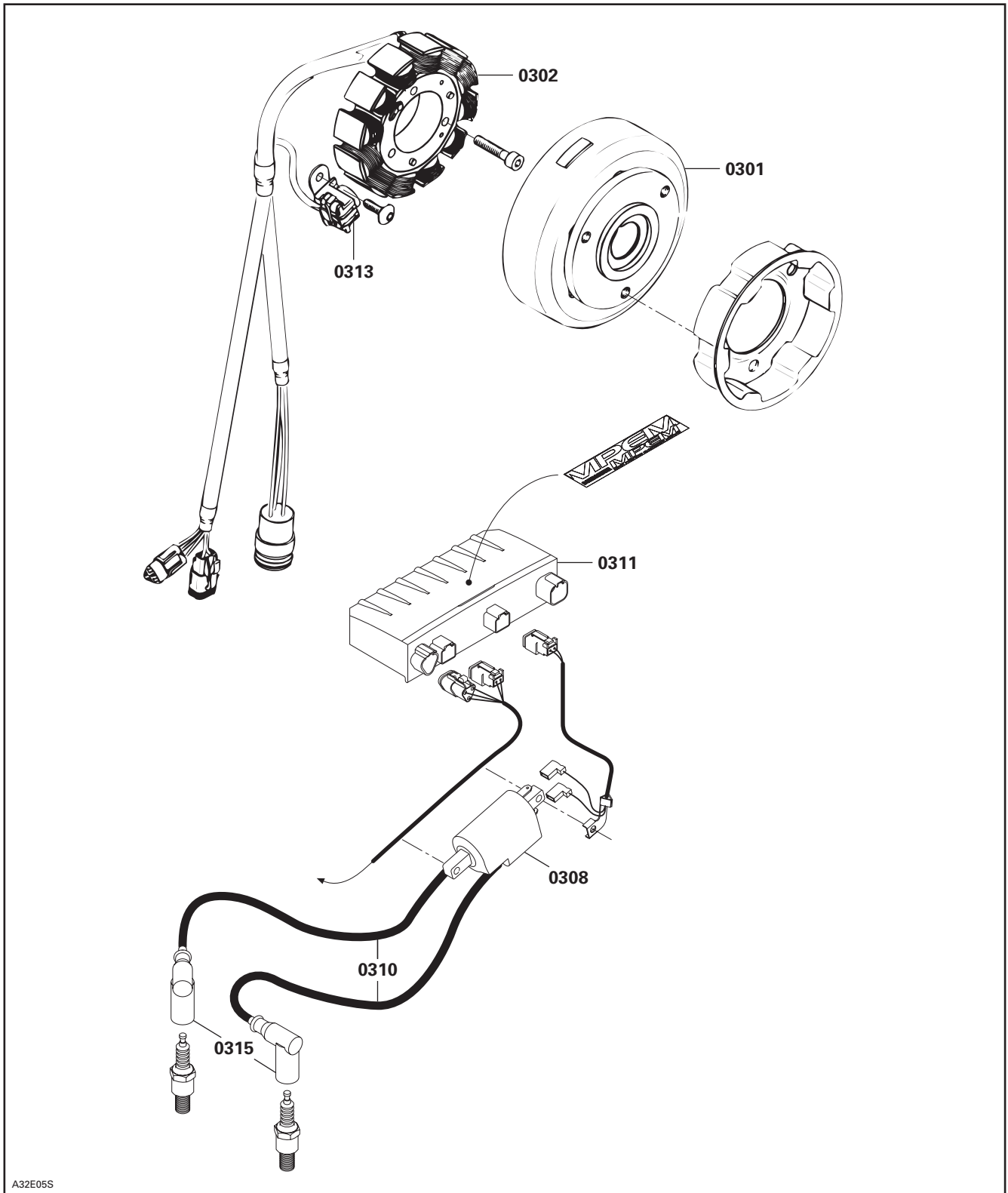


**IGNITION SYSTEM
SYSTÈME D'ALLUMAGE**

SYSTEM	CODE	SYSTEM 03 SYSTÈME 03	MX Z X 440	MX Z 500 STD MX Z 500 TRAIL	FOR.DLX 500 STD	G.TOURING 500 STD	MX Z 600 X MX Z 600 ADRN	MX Z 600 STD MX Z 600 TRAIL	FOR.DLX 600 GSE	FOR.DLX 600 STD	G.TOURING 600 STD	SKANDIC 600 WT	SUMMIT 600 STD
			10	11	12	13	14	15	16	17	18	19	20

03 00	NO LABOR INVOLVED AUCUNE MAIN-D'OEUVRE IMPLIQUEE	0	0	0	0	0	0	0	0	0	0	0	0
03 01	MAGNETO FLYWHEEL VOLANT MAGNÉTIQUE	0.3	0.3	0.3	0.3	0.3	0.3	0.3	0.3	0.3	0.3	0.3	0.3
03 02	STATOR PLATE ASS'Y PLAQUE RÉACTEUR	0.6	0.6	0.6	0.6	0.6	0.6	0.6	0.6	0.6	0.6	0.6	0.6
03 08	IGNITION COIL BOBINE D'ALLUMAGE	0.3	0.3	0.3	0.3	0.3	0.3	0.3	0.3	0.3	0.3	0.3	0.3
03 10	IGNITION CABLE CABLE D'ALLUMAGE	0.3	0.3	0.3	0.3	0.3	0.3	0.3	0.3	0.3	0.3	0.3	0.3
03 11	ELECTRONIC MODULE MODULE ÉLECTRONIQUE	0.3	0.3	0.3	0.3	0.3	0.3	0.3	0.3	0.3	0.3	0.3	0.3
**	TIMING RÉGLAGE DE L'ALLUMAGE	0.3	0.3	0.3	0.3	0.3	0.3	0.3	0.3	0.3	0.3	0.3	0.3
03 13	PICK UP ASS'Y CAPTEUR ASS.	0.6	0.6	0.6	0.6	0.6	0.6	0.6	0.6	0.6	0.6	0.6	0.6
03 15	SPARK PLUG PROTECTOR PROTECTEUR DE BOUGIES	0.1	0.1	0.1	0.1	0.1	0.1	0.1	0.1	0.1	0.1	0.1	0.1

IGNITION SYSTEM 03
SYSTÈME D'ALLUMAGE 03



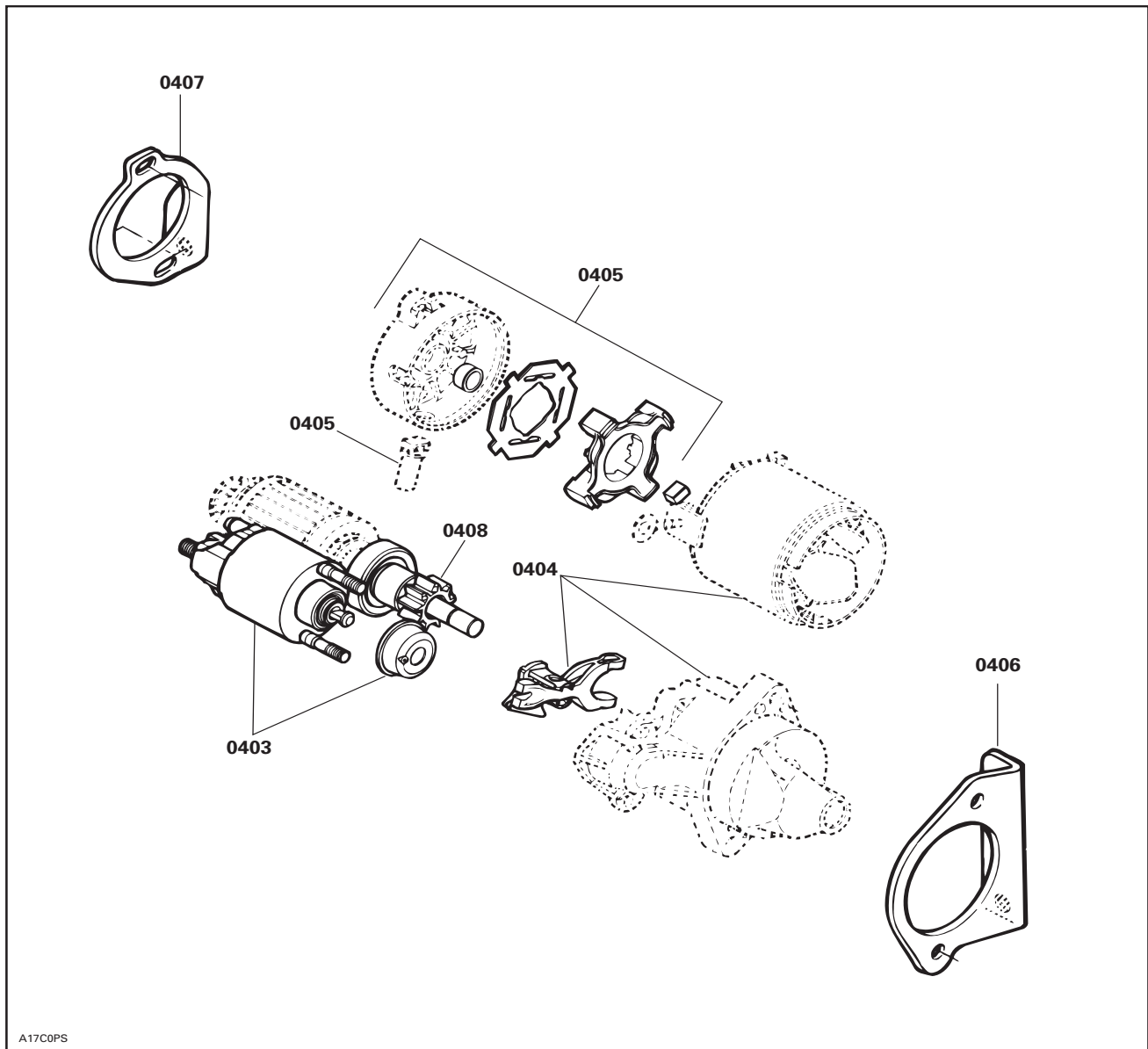
A32E05S

**STARTER
DÉMARREUR**

SYSTEM	CODE	SYSTEM 04 SYSTÈME 04	MX Z X 440	MX Z 500 STD MX Z 500 TRAIL	FOR.DLX 500 STD	G.TOURING 500 STD	MX Z 600 X MX Z 600 ADRN	MX Z 600 STD MX Z 600 TRAIL	FOR. DLX 600 GSE	FOR. DLX 600 STD	G.TOURING 600 STD	SKANDIC 600 WT	SUMMIT 600 STD
			10	11	12	13	14	15	16	17	18	19	20

04	00	NO LABOR INVOLVED AUCUNE MAIN D'ŒUVRE IMPLIQUÉE	0	0	0	0	0	0	0	0	0	0	0
04	01	REWIND STARTER ANY/OR ALL PARTS EXCEPT HANDLE DÉMARREUR RAPPEL TOUTES PIÈCES SAUF POIGNÉE	0.3	0.3	0.3	0.3	0.3	0.3	0.3	0.3	0.3	0.3	0.3
04	02	ELECTRIC STARTER ASS'Y DÉMARREUR ÉLECTRIQUE			1.4	1.4			1.4	1.4	1.4	1.4	
04	03	SWITCH ASS'Y (STARTER RELAY) INTERRUPTEUR(SOLÉNOÏDE DE DÉMARRAGE)			1.4	1.4			1.4	1.4	1.4	1.4	
04	04	PINION DRIVE LEVER,ARMATURE YOKE, FOURCHETTE DE COMMANDE,INDUIT,BOITIER			2.1	2.1			2.1	2.1	2.1	2.1	
04	05	END FRAME,BUSHING,BRUSH,PRESSURE BRUSH LOGEMENT D'EXT,DOUILLE,BALAI TOUTES PIÈCES			2.1	2.1			2.1	2.1	2.1	2.1	
04	06	STARTER BRAKET (MAG) PLAQUE DE FIXATION DE DÉMARREUR (MAG)			1.4	1.4			1.4	1.4	1.4	1.4	
04	07	STARTER SUPPORT (PTO) SUPPORT DE DÉMARREUR (P.D.M)			1.4	1.4			1.4	1.4	1.4	1.4	
04	08	STARTER CLUTCH SYSTÈME D'EMBRAYAGE			1.8	1.8			1.8	1.8	1.8	1.8	
04	09	REWIND STARTER HANDLE POIGNÉE DU DÉMARREUR À RAPPEL	0.3	0.3	0.3	0.3	0.3	0.3	0.3	0.3	0.3	0.3	0.3
04	10	CONNECTING FLANGE FLASQUE DE CONNECTION	0.3	0.3	0.3	0.3	0.3	0.3	0.3	0.3	0.3	0.3	0.3

ELECTRIC STARTER
DÉMARREUR ÉLECTRIQUE



A17C0PS

**TRANSMISSION SYSTEM
SYSTÈME TRANSMISSION**

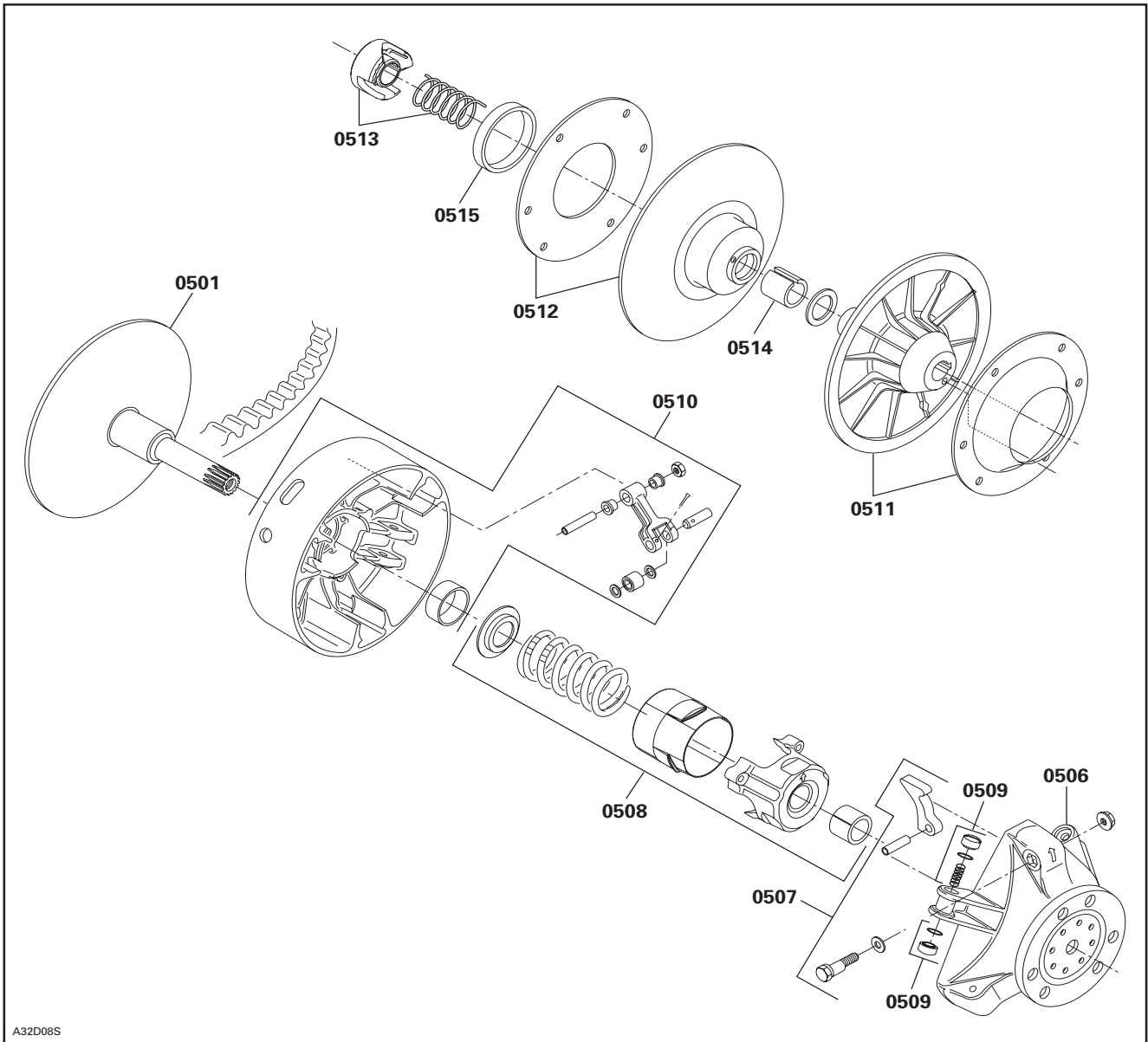
SYSTEM	CODE	SYSTEM 05 SYSTÈME 05	MX Z X 440	MX Z 500 STD MX Z 500 TRAIL	FOR.DLX 500 STD	G.TOURING 500 STD	MX Z 600 X MX Z 600 ADRN	MX Z 600 STD MX Z 600 TRAIL	FOR. DLX 600 GSE	FOR. DLX 600 STD	G.TOURING 600 STD	SKANDIC 600 WT	SUMMIT 600 STD
			10	11	12	13	14	15	16	17	18	19	20

05 00	NO LABOR INVOLVED AUCUNE MAIN-D'ŒUVRE IMPLIQUÉE	0	0	0	0	0	0	0	0	0	0	0	0
05 01	DRIVE PULLEY ASS'Y OR INNER HALF POULIE MOTRICE OU DEMIE-POULIE	0.3	0.3	0.3	0.3	0.3	0.3	0.3	0.3	0.3	0.3	0.3	0.3
05 06	TRA GOVERNOR CUP AND/OR FIXED HALF CUVETTE REGUL E/O PARTIE FIXE POULIE TRA	0.3	0.3	0.3	0.3	0.3	0.3	0.3	0.3	0.3	0.3	0.3	0.3
05 07	TRA RAMPS A/O ADJUSTMENT SCREWS RAMPES ET/OU VIS DE RÉGLAGE POULIE TRA	0.3	0.3	0.3	0.3	0.3	0.3	0.3	0.3	0.3	0.3	0.3	0.3
05 08	TRA SPRING COVER A/O SPRING A/O BUSHING COUVERCLE E/O RESSORT E/O DOUILLE POULIE TRA	0.7	0.7	0.7	0.7	0.7	0.7	0.7	0.7	0.7	0.7	0.7	0.7
05 09	TRA SLIDER SHOES AND/OR SPRING GLISSIÈRE ET/OU RESSORT DE POULIE TRA	0.3	0.3	0.3	0.3	0.3	0.3	0.3	0.3	0.3	0.3	0.3	0.3
05 10	TRA SLIDING HALF,BUSHING,A/O LEVER ROLLERS DEMI-POULIE COULL,DOUILLE ET/OU ROUL POULIE TRA	0.5	0.5	0.5	0.5	0.5	0.5	0.5	0.5	0.5	0.5	0.5	0.5
05 11	DRIVEN PULLEY FIXED HALF DEMI-POULIE MENÉE FIXE	0.3	0.3	0.3	0.3	0.3	0.3	0.3	0.3	0.3	0.3	0.3	0.3
05 12	DRIVEN PULLEY SLIDING HALF DEMI-POULIE MENÉE COULISSANTE	0.3	0.3	0.3	0.3	0.3	0.3	0.3	0.3	0.3	0.3	0.3	0.3
05 13	DRIVEN PULLEY OUTER CAM A/O SPRING CAME EXT. ET/OU RESSORT DE POULIE	0.3	0.3	0.3	0.3	0.3	0.3	0.3	0.3	0.3	0.3	0.3	0.3
05 14	DRIVEN PULLEY SMALL BUSHING PETITE DOUILLE DE POULIE MENÉE	0.6	0.6	0.6	0.6	0.6	0.6	0.6	0.6	0.6	0.6	0.6	0.6
05 15	DRIVEN PULLEY LARGE BUSHING GROSSE DOUILLE DE POULIE MENÉE	0.6	0.6	0.6	0.6	0.6	0.6	0.6	0.6	0.6	0.6	0.4	0.6
05 17	COUNTERSHAFT(L.H.)BEARING COLLAR A/O FLANGE CHAPEAU ROUL (GCH) ET/OU ROUL ET/OU FLASQUE	0.4	0.4	0.4	0.4	0.4	0.4	0.4	0.4	0.4	0.4		0.4
05 18	COUNTERSHAFT ARBRE DE RENVOI	1.0	1.0	1.0	1.0	1.0	1.0	1.0	1.0	1.0	1.0		1.0
05 19	DRIVE BELT AND/OR GUARD COURROIE D'ENTRAÎNEMENT E/O GARDE	0.1	0.1	0.1	0.1	0.1	0.1	0.1	0.1	0.1	0.1	0.1	0.1
05 20	CHAINCASE UPPER SEAL A/O BEARING ANNEAU D'ÉTANC SUPP DE CARTER E/O ROULEMENT	1.4	1.4	1.4	1.4	1.4	1.4	1.4	1.4	1.4	1.4		1.4

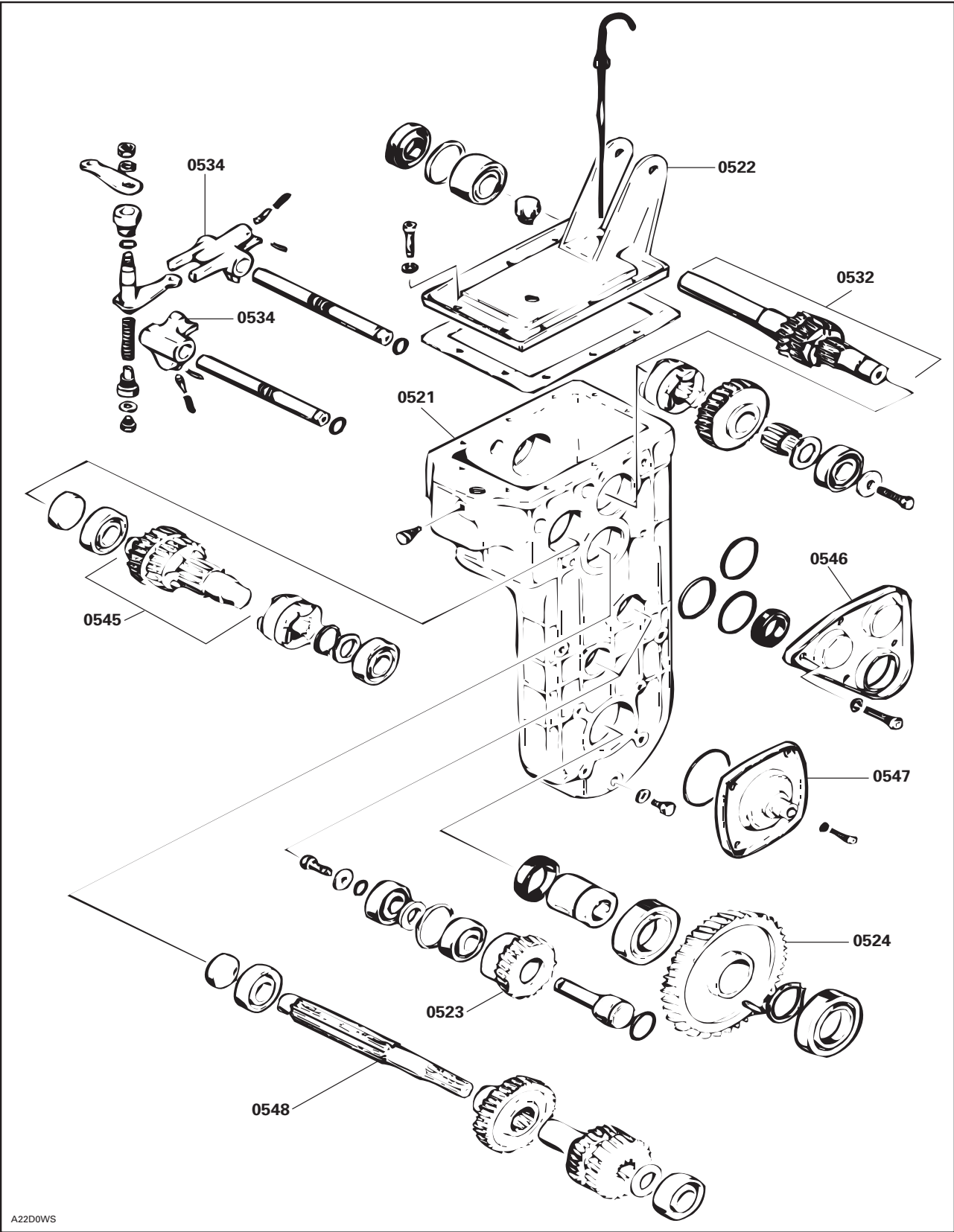
**TRANSMISSION SYSTEM
SYSTÈME TRANSMISSION**

SYSTEM	CODE	SYSTEM 05 SYSTÈME 05										
		MX Z X 440	MX Z 500 STD MX Z 500 TRAIL	FOR.DLX 500 STD	G.TOURING 500 STD	MX Z 600 X MX Z 600 ADRN	MX Z 600 STD MX Z 600 TRAIL	FOR. DLX 600 GSE	FOR. DLX 600 STD	G.TOURING 600 STD	SKANDIC 600 WT	SUMMIT 600 STD
		10	11	12	13	14	15	16	17	18	19	20

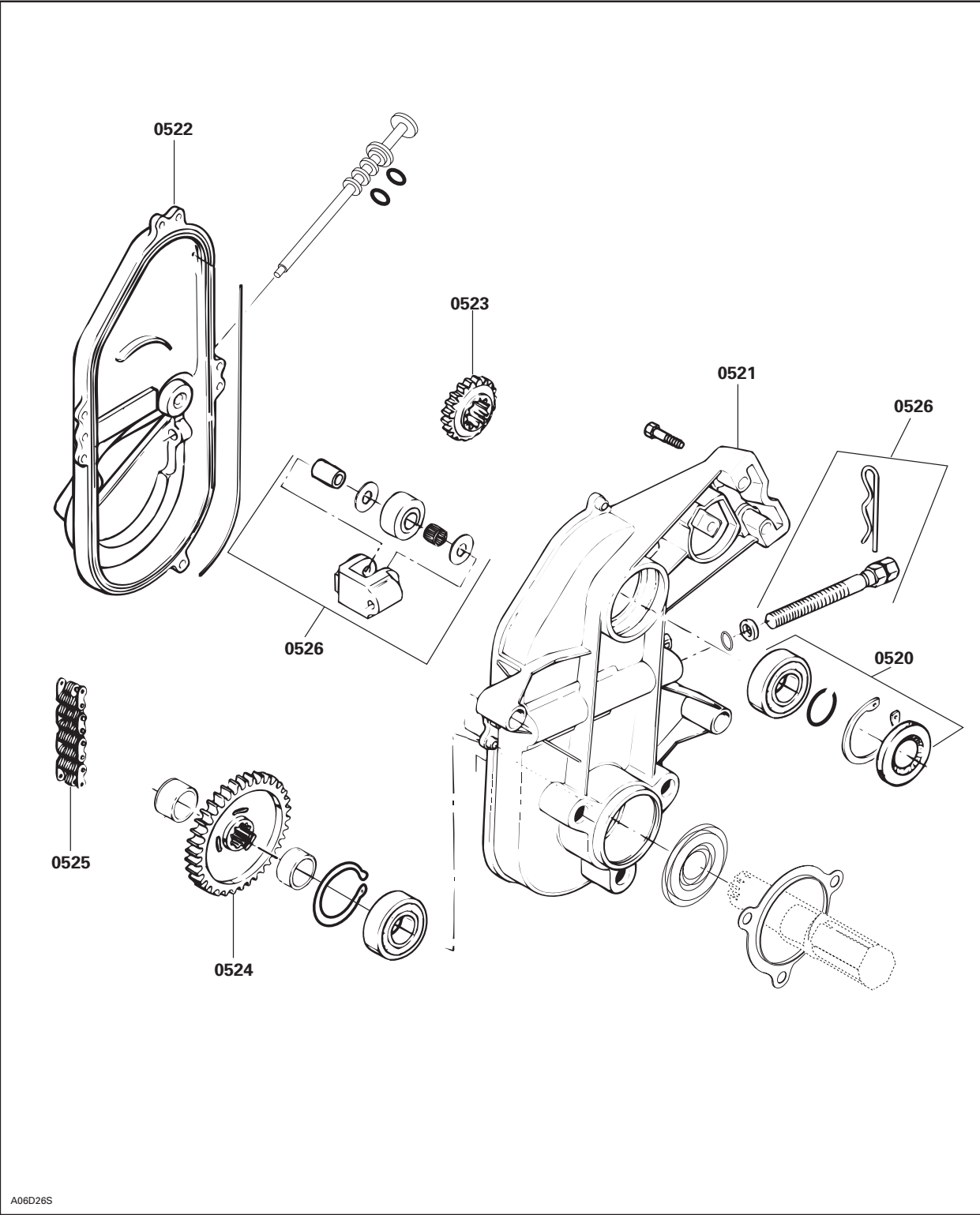
05 21	CHAINCASE CARTER DE CHAINE	1.8	1.8	2.0	2.0	1.8	1.8	2.0	2.0	2.0	1.4	1.8
05 22	CHAINCASE COVER COUVERCLE DU CARTER DE CHAINE	0.4	0.4	0.4	0.4	0.4	0.4	0.4	0.4	0.4	0.4	0.4
05 23	CHAINCASE UPP SPROCKET A/O CENTRAL PIGNON SUPÉRIEUR DE CARTER ET/OU PIGNON CENTRAL	0.5	0.5	0.8	0.8	0.5	0.5	0.8	0.8	0.8	3.8	0.5
05 24	CHAINCASE LOWER SPROCKET PIGNON INFÉRIEUR DE CARTER DE CHAINE	0.4	0.4	0.9	0.9	0.4	0.4	0.9	0.9	0.9	4.3	0.4
05 25	CHAINCASE DRIVE CHAIN CHAINE D'ENTRAINEMENT DU CARTER CHAINE	0.4	0.4	0.9	0.9	0.4	0.4	0.9	0.9	0.9		0.4
05 26	CHAINCASE TENSIONERS TENDEURS DE CARTER DE CHAINE	0.3	0.3	0.6	0.6	0.3	0.3	0.6	0.6	0.6		0.3
05 27	TENSIONER ADJUSTMENT SCREW VIS DE RÉGLAGE DU TENDEUR	1.8	1.8	2.0	2.0	1.8	1.8	2.0	2.0	2.0		1.8
05 32	ROTAX TRANSM LAY SHAFT GEAR ASS'Y PIGNON D'ARBRE INTERMÉDIAIRE DE TRANSM										3.0	
05 34	SLIDING SLEEVE A/O FORK A/O FORK SHAFT CRABOT ET/OU FOURCHETTE ET/OU ARBRE			0.5	0.5			0.5	0.5	0.5	1.0	
05 39	SHIFT LEVER AND/OR SHIFT ROD LEVIER DE TRANSMISSION ET/OU TIGE			0.3	0.3			0.3	0.3	0.3	0.3	
05 40	SHIFT ROD BALL JOINT AND/OR SOCKET TIGE DE TRANSM,JOINT ROTULE E/O DOUILLE			0.3	0.3			0.3	0.3	0.3		
05 44	RING GEAR OR DAMPER COURONNE DE DÉMARRAGE			0.4	0.4			0.4	0.4	0.4	0.4	
05 45	REVERSE GEARWHEEL AND SHAFT ENGRENAGE ET ARBRE DE MARCHE ARRIÈRE										2.5	
05 46	SIDE COVER COUVERCLE DE CÔTÉ										0.5	
05 47	COVER LOWER SIDE COUVERCLE DU CÔTÉ INFÉRIEUR										0.4	
05 48	CENTER SHAFT AXE CENTRAL										3.5	



A32D08S



WITHOUT REVERSE GEAR
SANS MARCHE ARRIÈRE



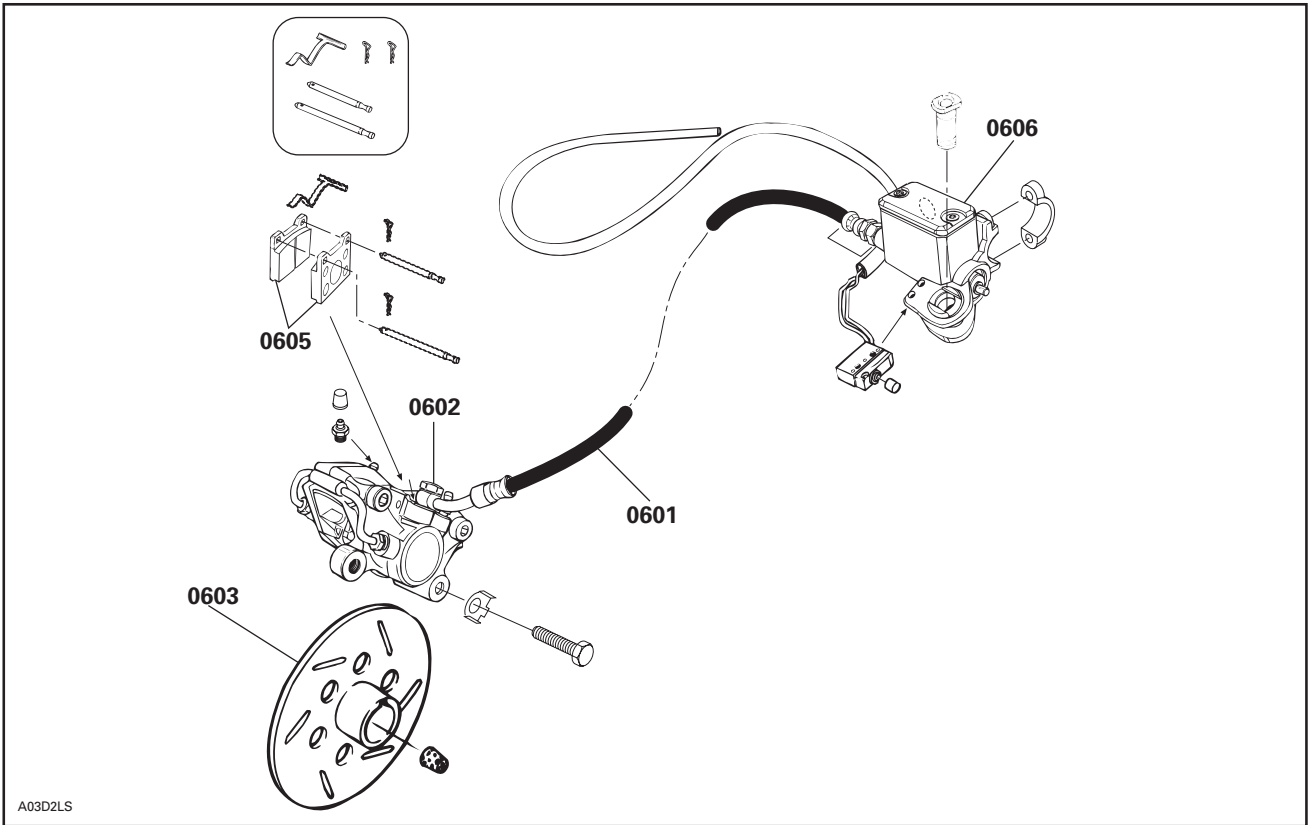
A06D26S

**BRAKE SYSTEM
SYSTÈME DE FREIN**

SYSTEM	CODE	<p align="center">SYSTEM 06 SYSTÈME 06</p>										
		MX Z X 440	MX Z 500 STD MX Z 500 TRAIL	FOR.DLX 500 STD	G.TOURING 500 STD	MX Z 600 X MX Z 600 ADRN	MX Z 600 STD MX Z 600 TRAIL	FOR. DLX 600 GSE	FOR. DLX 600 STD	G.TOURING 600 STD	SKANDIC 600 WT	SUMMIT 600 STD
		10	11	12	13	14	15	16	17	18	19	20

06 00	NO LABOR INVOLVED AUCUNE MAIN-D'ŒUVRE IMPLIQUÉE	0	0	0	0	0	0	0	0	0	0	0
06 01	BRAKE OIL HOSE BOYAU À L'HUILE POUR FREIN	0.7	0.7	0.7	0.7	0.7	0.7	0.7	0.7	0.7	0.7	0.7
06 02	CALIPER ÉTRIER	0.8	0.8	0.8	0.8	0.8	0.8	0.8	0.8	0.8	0.8	0.8
06 03	DISC DISQUE	1.2	1.2	1.2	1.2	1.2	1.2	1.2	1.2	1.2	1.2	1.2
06 05	BRAKE PADS PLAQUETTES DE FREIN	0.3	0.3	0.3	0.3	0.3	0.3	0.3	0.3	0.3	0.3	0.3
06 06	MASTER CYLINDER MÂÎTRE CYLINDRE	1.2	1.2	1.2	1.2	1.2	1.2	1.2	1.2	1.2	1.2	1.2
06 07	BRAKE LEVER ASS'Y LEVIER DE FREIN ASS.	0.3	0.3	0.3	0.3	0.3	0.3	0.3	0.3	0.3	0.3	0.3
06 08	MICROSWITCH BRAKE ASS'Y INTERRUPTEUR MICRO-CONTACT DE FREIN ASS.	0.3	0.3	0.3	0.3	0.3	0.3	0.3	0.3	0.3	0.3	0.3

BRAKE SYSTEM 06
SYSTÈME DE FREIN 06



A03D2LS

**STEERING SYSTEM AND FRONT SUSPENSION
SYSTÈME DE DIRECTION ET DE SUSPENSION AVANT**

SYSTEM	CODE	SYSTEM 07 SYSTÈME 07	MX Z X 440	MX Z 500 STD MX Z 500 TRAIL	FOR.DLX 500 STD	G.TOURING 500 STD	MX Z 600 X MX Z 600 ADRN	MX Z 600 STD MX Z 600 TRAIL	FOR. DLX 600 GSE	FOR. DLX 600 STD	G.TOURING 600 STD	SKANDIC 600 WT	SUMMIT 600 STD
			10	11	12	13	14	15	16	17	18	19	20

07 00	NO LABOR INVOLVED AUCUNE MAIN-D'ŒUVRE IMPLIQUÉE	0	0	0	0	0	0	0	0	0	0	0	0
07 01	SKI (ONE) SKI (1)	0.3	0.3	0.3	0.3	0.3	0.3	0.3	0.3	0.3	0.3	0.3	0.3
07 02	SKIS (TWO) SKIS (2)	0.4	0.4	0.4	0.4	0.4	0.4	0.4	0.4	0.4	0.4	0.4	0.4
07 03	SKI RUNNER SHOES LISSES	0.3	0.3	0.3	0.3	0.3	0.3	0.3	0.3	0.3	0.3	0.3	0.3
07 08	SKI LEG (R.H.) AND/OR BUSHING JAMBE DE SKI (DROITE) ET/OU DOUILLE	0.3	0.3	0.3	0.3	0.3	0.3	0.3	0.3	0.3	0.3	0.5	0.3
07 09	SKI LEG (L.H.) AND/OR BUSHING JAMBE DE SKI (GAUCHE) ET/OU DOUILLE	0.3	0.3	0.3	0.3	0.3	0.3	0.3	0.3	0.3	0.3	0.4	0.3
07 10	STEERING ARM (R.H.) BRAS DE DIRECTION (DROIT)	0.3	0.3	0.3	0.3	0.3	0.3	0.3	0.3	0.3	0.3	0.5	0.3
07 11	STEERING ARM (L.H.) BRAS DE DIRECTION (GAUCHE)	0.3	0.3	0.3	0.3	0.3	0.3	0.3	0.3	0.3	0.3	0.4	0.3
07 12	R.H. STEERING ARM BALL JOINT JOINT À ROTULE DU BRAS DE DIRECTION (DROIT)	0.3	0.3	0.3	0.3	0.3	0.3	0.3	0.3	0.3	0.3	0.8	0.3
07 13	L.H. STEERING ARM BALL JOINT JOINT À ROTULE DU BRAS DE DIRECTION (GAUCHE)	0.3	0.3	0.3	0.3	0.3	0.3	0.3	0.3	0.3	0.3	0.3	0.3
07 14	TELESC TUBE/SPRING/BUSHING/SAUCER TUBE TÉLESCO/RESSORT/DOUILLES/SOUPAPE											0.3	
07 15	SQUARE SHAFT,SHOCK AND/OR BUSHINGS ARBRE CARRÉ E/O AMORTISS E/O DOUILLE											0.4	
07 18	TIE ROD (MAIN TUBE/STEERING ARM) BARRE D'ACCOUPEMENT (COLONNE/BRAS DE DIRECTION)	2.5	2.5	2.5	2.5	2.5	2.5	2.5	2.5	2.5	2.5		2.5
07 19	TIE ROD (FOR R.H AND L.H STEERING ARM) BARRE ACCOUPLE/ BRAS DE DIRECT. DR OU G	1.0	1.0	1.0	1.0	1.0	1.0	1.0	1.0	1.0	1.0		1.0
07 20	TIE ROD COVER (ONE) CAPUCHON DE TIMONERIE (1)	0.4	0.4	0.4	0.4	0.4	0.4	0.4	0.4	0.4	0.4		0.4
07 21	TIE ROD COVERS (TWO) CAPUCHON DE TIMONERIE (2)	0.8	0.8	0.8	0.8	0.8	0.8	0.8	0.8	0.8	0.8		0.8

**STEERING SYSTEM AND FRONT SUSPENSION
SYSTÈME DE DIRECTION ET DE SUSPENSION AVANT**

SYSTEM	CODE	SYSTEM 07 SYSTÈME 07	MX Z X 440	MX Z 500 STD MX Z 500 TRAIL	FOR. DLX 500 STD	G. TOURING 500 STD	MX Z 600 X MX Z 600 ADRN	MX Z 600 STD MX Z 600 TRAIL	FOR. DLX 600 GSE	FOR. DLX 600 STD	G. TOURING 600 STD	SKANDIC 600 WT	SUMMIT 600 STD
			10	11	12	13	14	15	16	17	18	19	20

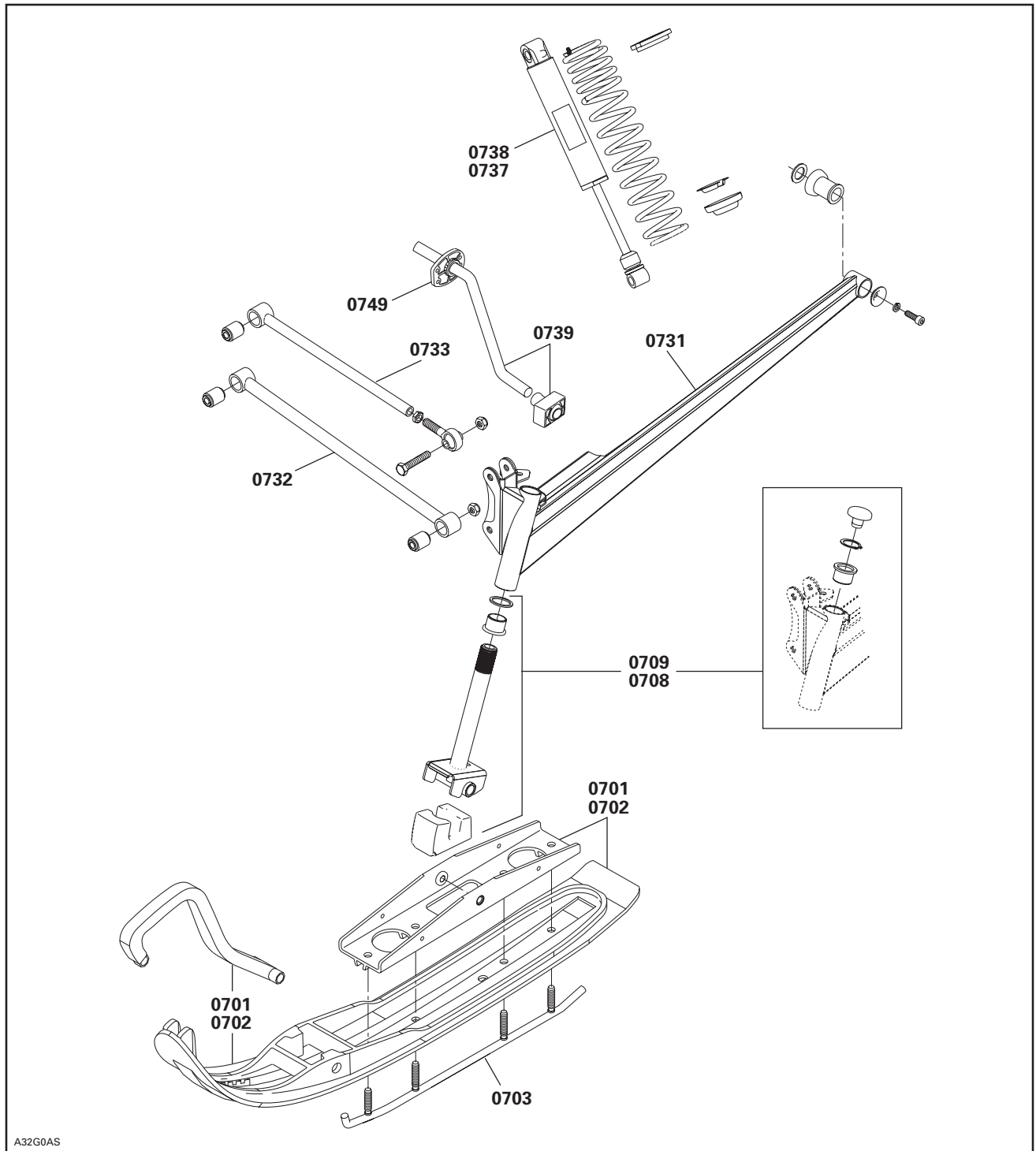
07 22	STEERING PIVOT ARM BRAS DE DIRECTION PIVOTANT	0.5	0.5	0.5	0.5	0.5	0.5	0.5	0.5	0.5	0.5		0.5
07 23	STEERING MAIN TUBE BALL JOINT JOINT ROTULE DE LA COLONNE DE DIRECTION	2.5	2.5	2.5	2.5	2.5	2.5	2.5	2.5	2.5	2.5	0.5	2.5
07 24	STEERING MAIN TUBE COLONNE DE DIRECTION	2.5	2.5	2.5	2.5	2.5	2.5	2.5	2.5	2.5	2.5	2.0	2.5
07 25	HANDLE BAR GUIDON	0.4	0.4	0.4	0.4	0.4	0.4	0.4	0.4	0.4	0.4	0.6	0.4
07 26	HANDLE BAR GRIP/HOUSING/PARKING BRAKE POIGNÉE DE GUIDON/LOGEMENT/FREIN DE STATIONNEMENT	0.3	0.3	0.3	0.3	0.3	0.3	0.3	0.3	0.3	0.3	0.3	0.3
07 27	HANDLE BAR PADDING COUSSINET DE GUIDON	0.3	0.3	0.3	0.3	0.3	0.3	0.3	0.3	0.3	0.3	0.3	0.3
07 28	UPPER STEERING MAIN TUBE BUSHING DOUILLE SUPÉRIEUR DE LA COLONNE DE DIRECTION	0.7	0.7	0.7	0.7	0.7	0.7	0.7	0.7	0.7	0.7	0.3	0.7
07 29	LOWER STEERING MAIN TUBE BUSHING DOUILLE INFÉRIEUR DE LA COLONNE DE DIRECTION	2.5	2.5	2.5	2.5	2.5	2.5	2.5	2.5	2.5	2.5	0.5	2.5
07 31	SWING ARM (L.H. OR R.H.) BRAS OSCILLANT (G OU DR)	0.4	0.4	0.4	0.4	0.4	0.4	0.4	0.4	0.4	0.4		0.4
07 32	LOWER ARM (L.H. OR R.H.) BRAS DE SUSPENSION INFÉRIEUR) (G OU DR)	0.5	0.5	0.5	0.5	0.5	0.5	0.5	0.5	0.5	0.5		0.5
07 33	UPPER ARM (L.H. OR R.H.) BRAS DE SUSPENSION SUPÉRIEUR) (G OU DR)	0.3	0.3	0.3	0.3	0.3	0.3	0.3	0.3	0.3	0.3		0.3
07 36	HEATED GRIPS POIGNÉES CHAUFFANTES	0.4	0.4	0.4	0.4	0.4	0.4	0.4	0.4	0.4	0.4	0.4	0.4
07 37	SHOCK AND/OR SPRING (ONE) AMORTISSEUR ET/OU RESSORT (1)	0.3	0.3	0.3	0.3	0.3	0.3	0.3	0.3	0.3	0.3	0.4	0.3
07 38	SHOCKS AND/OR SPRINGS (TWO) AMORTISSEURS ET/OU RESSORTS (2)	0.4	0.4	0.4	0.4	0.4	0.4	0.4	0.4	0.4	0.4	0.6	0.4
07 39	STABILIZER BAR BARRE STABILISATRICE	0.4	0.4	0.4	0.4	0.4	0.4	0.4	0.4	0.4	0.4		0.4

**STEERING SYSTEM AND FRONT SUSPENSION
SYSTÈME DE DIRECTION ET DE SUSPENSION AVANT**

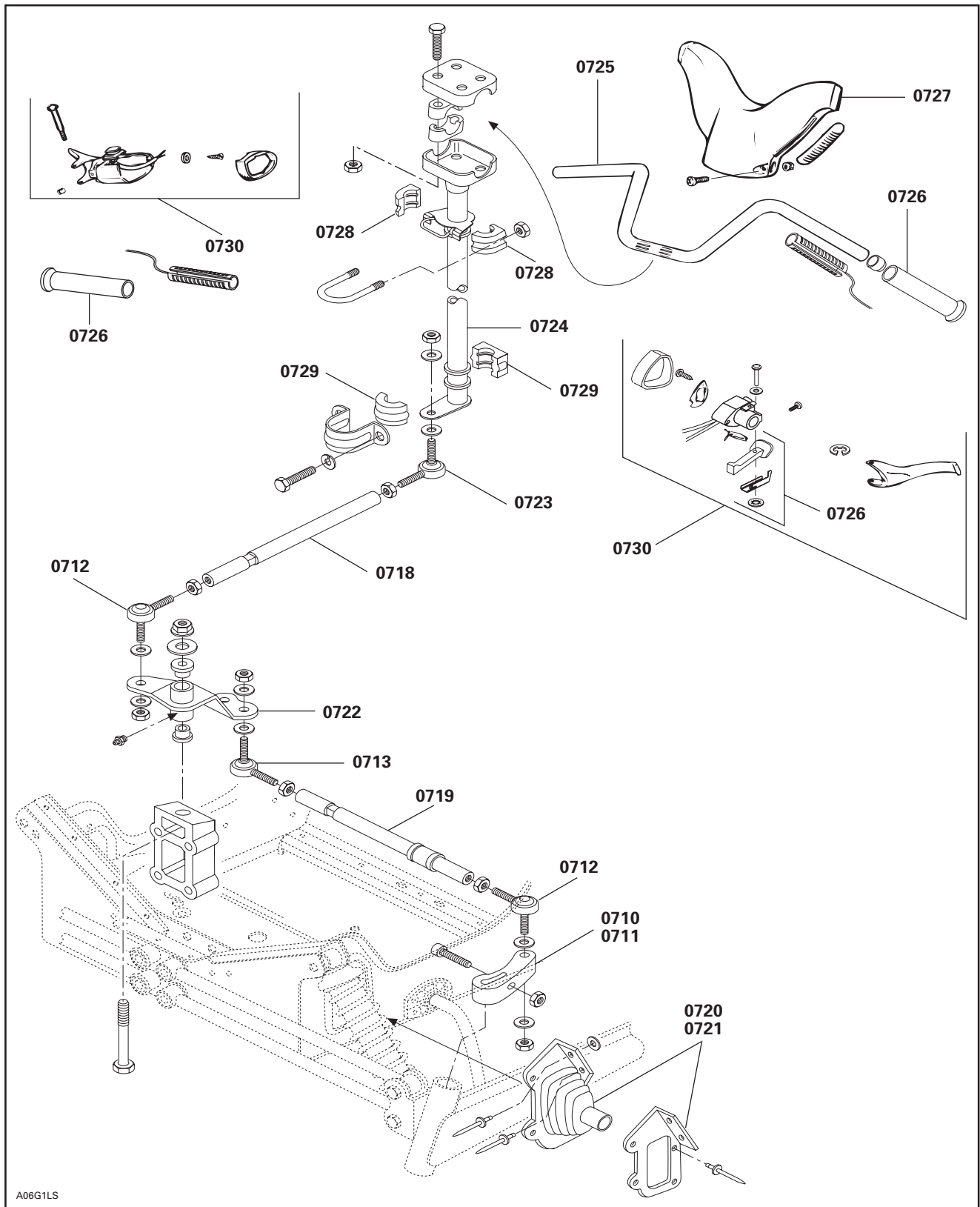
SYSTEM	CODE	SYSTEM 07 SYSTÈME 07	MX Z X 440	MX Z 500 STD MX Z 500 TRAIL	FOR.DLX 500 STD	G.TOURING 500 STD	MX Z 600 X MX Z 600 ADRN	MX Z 600 STD MX Z 600 TRAIL	FOR. DLX 600 GSE	FOR. DLX 600 STD	G.TOURING 600 STD	SKANDIC 600 WT	SUMMIT 600 STD
			10	11	12	13	14	15	16	17	18	19	20

07 49	STABILIZER BAR PAD OR BUSHING PLAQUETTE DE LA BARRE STABILISATRICE	0.3	0.3	0.3	0.3	0.3	0.3	0.3	0.3	0.3	0.3		0.3
07 52	RH STEERING MAIN TUBE BALL JOINT JOINT À ROTULE DE LA COLONNE DE DIRECTION (DROIT)											0.9	
07 55	FRONT SWING ARM DECALS, ONE OR TWO DÉCALQUE DU BRAS DE SUSPENSION AVANT (1 OU 2)	0.3	0.3	0.3	0.3	0.3	0.3	0.3	0.3	0.3	0.3		0.3
07 59	LH TIE ROD (MAIN TUBE, STEERING ARM) BARRE D'ACCOUPLMENT GAUCHE	0.3	0.3	0.3	0.3	0.3	0.3	0.3	0.3	0.3	0.3	0.5	0.3
07 60	RH TIE ROD (MAIN TUBE, STEERING ARM) BARRE D'ACCOUPLMENT DROITE	0.3	0.3	0.3	0.3	0.3	0.3	0.3	0.3	0.3	0.3	0.9	0.3

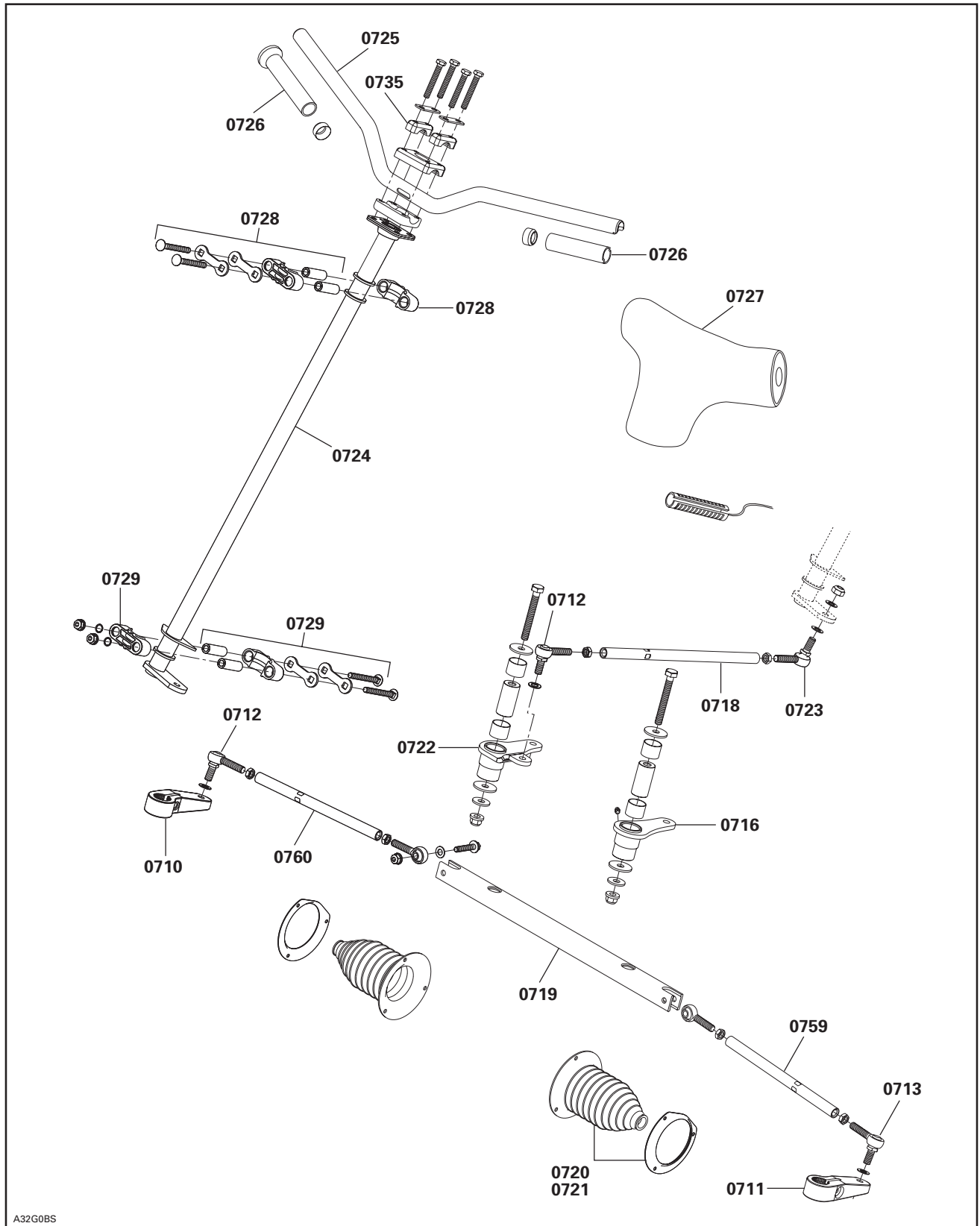
STEERING/CONTROLS AND FRONT SUSPENSION 07
DIRECTION/COMMANDES ET SUSPENSION AVANT 07



STEERING/CONTROLS AND FRONT SUSPENSION 07
DIRECTION/COMMANDES ET SUSPENSION AVANT 07



STEERING/CONTROLS AND FRONT SUSPENSION 07
DIRECTION/COMMANDES ET SUSPENSION AVANT 07



A32G0BS

**REAR SUSPENSION AND TRACK
SUSPENSION ARRIÈRE ET CHENILLE**

SYSTEM	CODE	SYSTEM 08 SYSTÈME 08	MX Z X 440	MX Z 500 STD MX Z 500 TRAIL	FOR.DLX 500 STD	G.TOURING 500 STD	MX Z 600 X MX Z 600 ADRN	MX Z 600 STD MX Z 600 TRAIL	FOR. DLX 600 GSE	FOR. DLX 600 STD	G.TOURING 600 STD	SKANDIC 600 WT	SUMMIT 600 STD
			10	11	12	13	14	15	16	17	18	19	20

08 00	NO LABOR INVOLVED AUCUNE MAIN-D'ŒUVRE IMPLIQUÉE	0	0	0	0	0	0	0	0	0	0	0	0
08 01	SLIDER SHOE (ONE) GLISSIÈRE (1)	0.8	0.8	0.8	0.8	0.8	0.8	0.8	0.8	0.8	0.8	0.5	0.8
08 02	SLIDER SHOES (TWO) GLISSIÈRES (2)	1.0	1.0	1.0	1.0	1.0	1.0	1.0	1.0	1.0	1.0	0.7	1.0
08 03	RUNNER (ONE) PORTE GLISSIÈRE (1)	1.2	1.2	1.2	1.2	1.2	1.2	1.2	1.2	1.2	1.2	0.9	1.2
08 04	RUNNERS (TWO) PORTE GLISSIÈRES (2)	1.5	1.5	1.5	1.5	1.5	1.5	1.5	1.5	1.5	1.5	1.2	1.5
08 09	FRONT IDLER WHEEL AND/OR BEARING (ONE) ROUE DU SUPPORT AVANT ET/OU ROULEMENT	0.3	0.3	0.3	0.3	0.3	0.3	0.3	0.3	0.3	0.3	0.3	0.3
08 10	FRONT IDLER WHEELS AND/OR BEARINGS AND/OR SHAFT(TWO) ROUES DU SUPPORT AVANT E/O ROULEMENT E/O ARBRE (2)	0.4	0.4	0.4	0.4	0.4	0.4	0.4	0.4	0.4	0.4	0.4	0.4
08 11	FRONT IDLER WHEEL SUPPORT (ONE) SUPPORT DE ROUE AVANT (1)	0.3	0.3	0.3	0.3	0.3	0.3	0.3	0.3	0.3	0.3		0.3
08 12	FRONT IDLER WHEEL SUPPORTS (TWO) SUPPORTS DE ROUE AVANT (2)	0.4	0.4	0.4	0.4	0.4	0.4	0.4	0.4	0.4	0.4		0.4
08 13	CENTER IDLER WHEEL A/O BEARING (ONE) ROUE DU SUPPORT CENTRALE E/O ROULEMENT (1)	0.5	0.5	0.5	0.5	0.5	0.5	0.5	0.5	0.5	0.5	0.3	0.5
08 14	CENTER IDLER WHEELS A/O BEARINGS A/O SHAFT (TWO) ROUES DU SUPPORT CNTR E/O ROULEMENTS E/O ARBRE (2)	0.4	0.4	0.4	0.4	0.4	0.4	0.4	0.4	0.4	0.4	0.3	0.4
08 15	CENTER IDLER WHEEL SUPPORT (ONE) SUPPORT DE LA ROUE CENTRALE (1)	0.3	0.3	0.3	0.3	0.3	0.3	0.3	0.3	0.3	0.3	0.3	0.3
08 17	REAR IDLER AND/OR BEARING (ONE) ROUE DU SUPPORT ARRIÈRE ET/OU ROULEMENT (1)	0.4	0.4	0.4	0.4	0.4	0.4	0.4	0.4	0.4	0.4	0.3	0.4
08 18	REAR IDLERS AND/OR BEARINGS (TWO) ROUES DU SUPPT ARRIÈRE ET/OU ROULEMENTS (2)	0.5	0.5	0.5	0.5	0.5	0.5	0.5	0.5	0.5	0.5	0.4	0.5
08 19	REAR IDLER WHEELS AXLE ESSIEU DE ROUES DE SUPPORT ARRIÈRE	0.5	0.5	0.5	0.5	0.5	0.5	0.5	0.5	0.5	0.5	0.3	0.5
08 22	TAIL PIVOT IDLER WHEEL,(ONE) INSIDE ROUE SUPPORT DE PIVOT ARRIÈRE ET/OU ROULEMENT (1) INT											0.3	

**REAR SUSPENSION AND TRACK
SUSPENSION ARRIÈRE ET CHENILLE**

SYSTEM	CODE	SYSTEM 08 SYSTÈME 08	MX Z X 440	MX Z 500 STD MX Z 500 TRAIL	FOR.DLX 500 STD	G.TOURING 500 STD	MX Z 600 X MX Z 600 ADRN	MX Z 600 STD MX Z 600 TRAIL	FOR. DLX 600 GSE	FOR. DLX 600 STD	G.TOURING 600 STD	SKANDIC 600 WT	SUMMIT 600 STD
			10	11	12	13	14	15	16	17	18	19	20

08 23	TAIL PIVOT IDLER WHEELS, TWO OR AXEL ROUES SUPPORT DE PIVOT ARR/ROULEMENT (2) OU ESSIEU											0.3	
08 29	AXEL (STOPPER STRAP) AXE (COURROIE D'ARRÊT)	0.3	0.3	0.3	0.3	0.3	0.3	0.3	0.3	0.3	0.3	0.3	0.3
08 30	REAR SHOCK SUPPORT/SCREW/PLATE SUPPORT DE L'AMORTISSEUR ARRIÈRE											0.3	
08 31	TRACK TENSION ADJUSTER (ONE) PLAQUE DE RÉGLAGE TENSION DE LA CHENILLE (1)	0.3	0.3	0.3	0.3	0.3	0.3	0.3	0.3	0.3	0.3		0.3
08 32	TRACK TENSION ADJUSTER (TWO) PLAQUE DE RÉGLAGE TENSION DE LA CHENILLE (2)	0.4	0.4	0.4	0.4	0.4	0.4	0.4	0.4	0.4	0.4		0.4
08 33	RUNNER RUBBER STOPPER (ONE) BUTÉE DE CAOUTCHOUC DE PORTE-GLISSIÈRE (1)	0.3	0.3	0.3	0.3	0.3	0.3	0.3	0.3	0.3	0.3	0.3	0.3
08 34	RUNNER RUBBER STOPPERS (TWO) BUTÉES DE CAOUTCHOUC DE PORTE-GLISSIÈRE (2)	0.4	0.4	0.4	0.4	0.4	0.4	0.4	0.4	0.4	0.4	0.3	0.4
08 35	FRONT ARM AND/OR AXLE BRAS AVANT ET/OU ESSIEU	0.8	0.8	0.8	0.8	0.8	0.8	0.8	0.8	0.8	0.8	0.6	0.8
08 36	FRONT ARM STOPPER STRAP/ STOPPER BOLT COURROIE D'ARRÊT DU BRAS AVANT OU DU BOULON AVANT	0.3	0.3	0.3	0.3	0.3	0.3	0.3	0.3	0.3	0.3	0.3	0.3
08 37	FRONT ARM SUPPORT SUPPORT DE BRAS AVANT											0.6	
08 40	REAR ARM AND/OR AXLE BRAS ARRIÈRE ET/OU ESIEU	0.7	0.7	0.7	0.7	0.7	0.7	0.7	0.7	0.7	0.7	0.5	0.7
08 41	REAR ARM IDLER WHEELS (1-2) A/O SHAFT ROUES SUPPORT DU BRAS ARRIÈRE (1-2) ET/OU ESSIEU	0.3	0.3	0.3	0.3	0.3	0.3	0.3	0.3	0.3	0.3	0.3	0.3
08 42	REAR ARM SHACKLE JUMELLE DE BRAS ARRIÈRE	0.3	0.3	0.3	0.3	0.3	0.3	0.3	0.3	0.3	0.3	0.3	0.3

**REAR SUSPENSION AND TRACK
SUSPENSION ARRIÈRE ET CHENILLE**

SYSTEM	CODE	SYSTEM 08 SYSTÈME 08	MX Z X 440	MX Z 500 STD MX Z 500 TRAIL	FOR.DLX 500 STD	G.TOURING 500 STD	MX Z 600 X MX Z 600 ADRN	MX Z 600 STD MX Z 600 TRAIL	FOR. DLX 600 GSE	FOR. DLX 600 STD	G.TOURING 600 STD	SKANDIC 600 WT	SUMMIT 600 STD
			10	11	12	13	14	15	16	17	18	19	20

08 44	REAR AND FRONT ARMS BRAS ARRIÈRE ET AVANT	1.5	1.5	1.5	1.5	1.5	1.5	1.5	1.5	1.5	1.5	1.1	1.5
08 48	TAIL PIVOT SUPPORT (ONE) SUPPORT DE PIVOT ARRIÈRE (1)											0.4	
08 49	TAIL PIVOT SUPPORTS (TWO) SUPPORTS DE PIVOT ARRIÈRE (2)											0.8	
08 50	REAR TORSION SPRING A/O WHEEL (ONE) RESSORT DE TORSION E/O ROUE ARRIÈRE (1)	0.3	0.3	0.3	0.3	0.3	0.3	0.3	0.3	0.3	0.3	0.3	0.3
08 51	REAR TORSION SPRINGS A/O WHEELS (TWO) RESSORTS TORSION E/O ROUES ARRIÈRE (2)	0.4	0.4	0.4	0.4	0.4	0.4	0.4	0.4	0.4	0.4	0.4	0.4
08 52	TORSION SPRING SUPPORT SUPPORT DE RESSORT DE TORSION	0.3	0.3	0.3	0.3	0.3	0.3	0.3	0.3	0.3	0.3	0.3	0.3
08 53	SPRING ADJUSTMENT CAM (ONE) CAME DE RÉGLAGE DU RESSORT (1)	0.3	0.3	0.3	0.3	0.3	0.3	0.3	0.3	0.3	0.3	0.3	0.3
08 54	SPRING ADJUSTMENT CAMS (TWO) CAMES DE RÉGLAGE DES RESSORTS (2)	0.4	0.4	0.4	0.4	0.4	0.4	0.4	0.4	0.4	0.4	0.4	0.4
08 55	SHOCK A/O SPRING A/O BUSHING (ONE) AMORTISS ET/OU RESSORT ET/OU DOUILLE (1)	0.3	0.3	0.3	0.3	0.3	0.3	0.3	0.3	0.3	0.3	0.3	0.3
08 63	CENTER UPPER IDLER WHEELS (IN TUNNEL) (1 OR 2) AND/OR SHAFT ROUES DE SUPP CENT. INTÉRIEUR TUNNEL (1OU2) E/O ARBRE	0.3	0.3	0.3	0.3	0.3	0.3	0.3	0.3	0.3	0.3		0.3
08 65	DRIVE AXLE AND BEARING HOUSING LOGEMENT ROULEMENT ET ESSIEU MOTEUR	0.3	0.3	0.3	0.3	0.3	0.3	0.3	0.3	0.3	0.3	0.3	0.3
08 66	DRIVE AXLE BEARING AND/OR SEAL ROULEMENT D'ESSIEU MOTEUR ET/OU JOINT	2.3	2.3	2.3	2.3	2.3	2.3	2.3	2.3	2.3	2.3	0.3	2.3
08 67	DRIVE AXLE SPROCKET AND/OR FLANGE(ONE) ROUE DENTÉE DE L'ESSIEU MOTEUR ET/OU FLASQUE (1)	2.5	2.5	2.5	2.5	2.5	2.5	2.5	2.5	2.5	2.5	2.0	2.5
08 68	DRIVE AXLE A/O SPROCKETS A/O FLANGE(2/+) ESSIEU MOTEUR E/O ROUES DENTÉES E/O FLASQUE (2/+)	3.1	3.1	3.1	3.1	3.1	3.1	3.1	3.1	3.1	3.1	2.4	3.1
08 69	TRACK (ONE) CHENILLE (1)	1.8	1.8	1.8	1.8	1.8	1.8	1.8	1.8	1.8	1.8	1.6	1.8
08 71	CLEATS AND/OR GUIDES (0-9) SEGMENTS GUIDE ET/OU GUIDES (0-9)	0.3	0.3	0.3	0.3	0.3	0.3	0.3	0.3	0.3	0.3	0.3	0.3
08 72	CLEATS AND/OR GUIDES (10-14) SEGMENTS GUIDE ET/OU GUIDES (10-14)	0.4	0.4	0.4	0.4	0.4	0.4	0.4	0.4	0.4	0.4	0.4	0.4

**REAR SUSPENSION AND TRACK
SUSPENSION ARRIÈRE ET CHENILLE**

SYSTEM	CODE	SYSTEM 08 SYSTÈME 08	MX Z X 440	MX Z 500 STD MX Z 500 TRAIL	FOR.DLX 500 STD	G.TOURING 500 STD	MX Z 600 X MX Z 600 ADRN	MX Z 600 STD MX Z 600 TRAIL	FOR.DLX 600 GSE	FOR.DLX 600 STD	G.TOURING 600 STD	SKANDIC 600 WT	SUMMIT 600 STD
			10	11	12	13	14	15	16	17	18	19	20

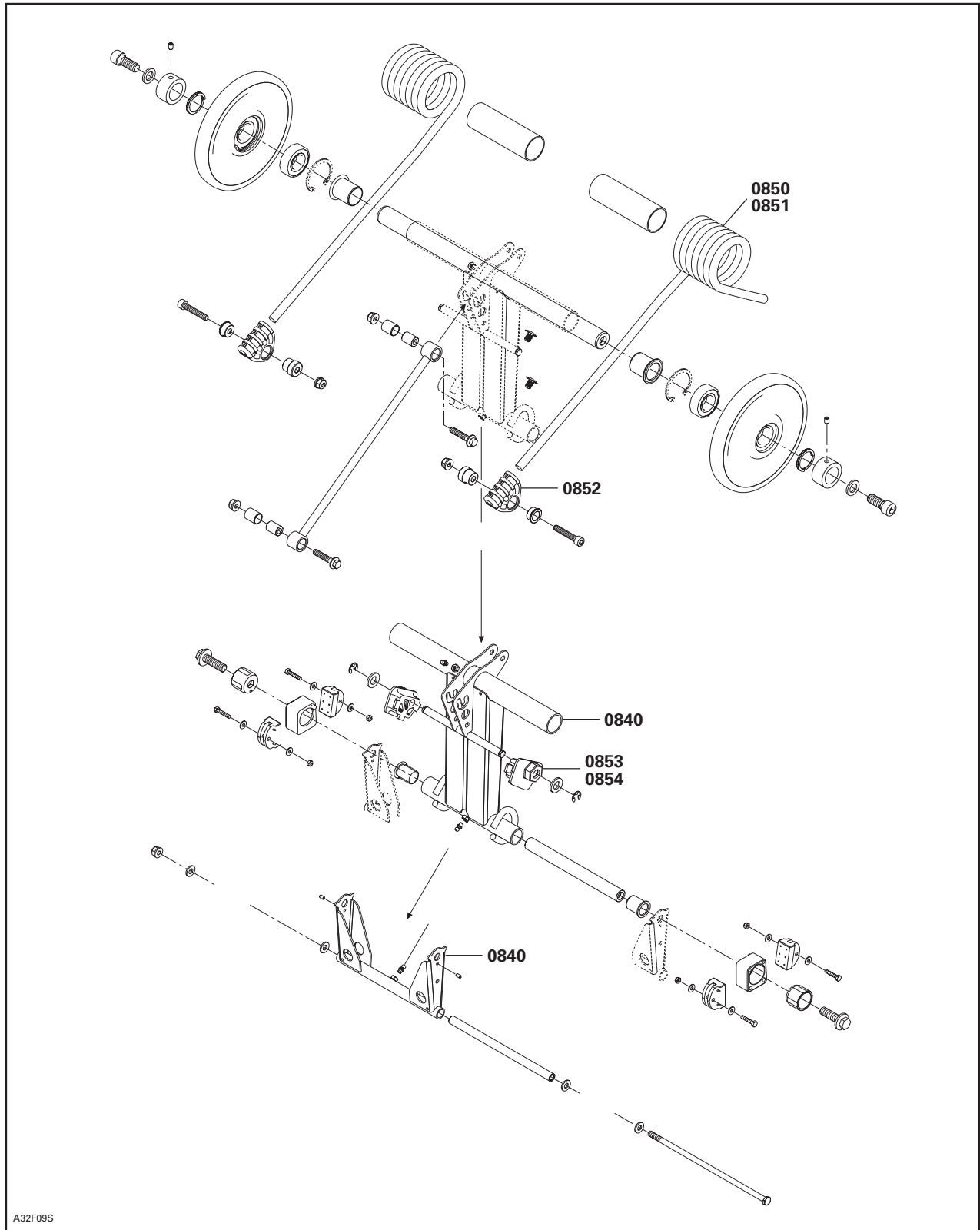
08 73	CLEATS AND/OR GUIDES (15-19) SEGMENTS GUIDE ET/OU GUIDES (15-19)	0.5	0.5	0.5	0.5	0.5	0.5	0.5	0.5	0.5	0.5	0.5	0.5
08 74	CLEATS AND/OR GUIDES (20-24) SEGMENTS GUIDE ET/OU GUIDES (20-24)	0.6	0.6	0.6	0.6	0.6	0.6	0.6	0.6	0.6	0.6	0.6	0.6
08 75	CLEATS AND/OR GUIDES (25-29) SEGMENTS GUIDE ET/OU GUIDES (25-29)	0.7	0.7	0.7	0.7	0.7	0.7	0.7	0.7	0.7	0.7	0.7	0.7
08 76	CLEATS AND/OR GUIDES (30-34) SEGMENTS GUIDE ET/OU GUIDES (30-34)	0.8	0.8	0.8	0.8	0.8	0.8	0.8	0.8	0.8	0.8	0.8	0.8
08 77	CLEATS AND/OR GUIDES (35-39) SEGMENTS GUIDE ET/OU GUIDES (35-39)	0.9	0.9	0.9	0.9	0.9	0.9	0.9	0.9	0.9	0.9	0.9	0.9
08 78	CLEATS AND/OR GUIDES (40-44) SEGMENTS GUIDE ET/OU GUIDES (40-44)	1.0	1.0	1.0	1.0	1.0	1.0	1.0	1.0	1.0	1.0	1.0	1.0
08 79	CLEATS AND/OR GUIDES (45-49) SEGMENTS GUIDE ET/OU GUIDES (45-49)	1.1	1.1	1.1	1.1	1.1	1.1	1.1	1.1	1.1	1.1	1.1	1.1
08 80	CLEATS AND/OR GUIDES (50-54) SEGMENTS GUIDE ET/OU GUIDES (50-54)	1.2	1.2	1.2	1.2	1.2	1.2	1.2	1.2	1.2	1.2	1.2	1.2
08 81	CLEATS AND/OR GUIDES (55-59) SEGMENTS GUIDE ET/OU GUIDES (55-59)											1.3	
08 82	CLEATS AND/OR GUIDES (60-64) SEGMENTS GUIDE ET/OU GUIDES (60-64)											1.4	
08 83	CLEATS AND/OR GUIDES (65-70) SEGMENTS GUIDE ET/OU GUIDES (65-70)											1.5	
**	DRIVE AXLE SPROCKET REPOSITIONNING REPOSITION DU BARBOTIN DE L'ESSIEU MOTEUR	0.4	0.4	0.4	0.4	0.4	0.4	0.4	0.4	0.4	0.4	0.4	0.4
08 85	ADJUSTMENT SCREW (ONE) VIS D'AJUSTEMENT (1)	0.3	0.3	0.3	0.3	0.3	0.3	0.3	0.3	0.3	0.3	0.3	0.3
08 86	ADJUSTMENT SCREWS (TWO) VIS D'AJUSTEMENT (2)	0.4	0.4	0.4	0.4	0.4	0.4	0.4	0.4	0.4	0.4	0.4	0.4
08 87	SHOCK SUPPORT AND/OR AXLE SUPPORT D'AMORTISSEUR ET/OU AXE	0.4	0.4	0.4	0.4	0.4	0.4	0.4	0.4	0.4	0.4		0.4
08 88	FRONT SHOCK AND/OR SPRING AMORTISSEUR AVANT ET/OU RESSORT	0.5	0.5	0.5	0.5	0.5	0.5	0.5	0.5	0.5	0.5		0.5
08 89	FRONT IDLER WHEELS A/O BEARINGS (3 OR 4) ROUE DE SUPPORT AVANT E/O ROULEMENT (3 OU 4)	0.5	0.5	0.5	0.5	0.5	0.5	0.5	0.5	0.5	0.5	0.5	0.5

**REAR SUSPENSION AND TRACK
SUSPENSION ARRIÈRE ET CHENILLE**

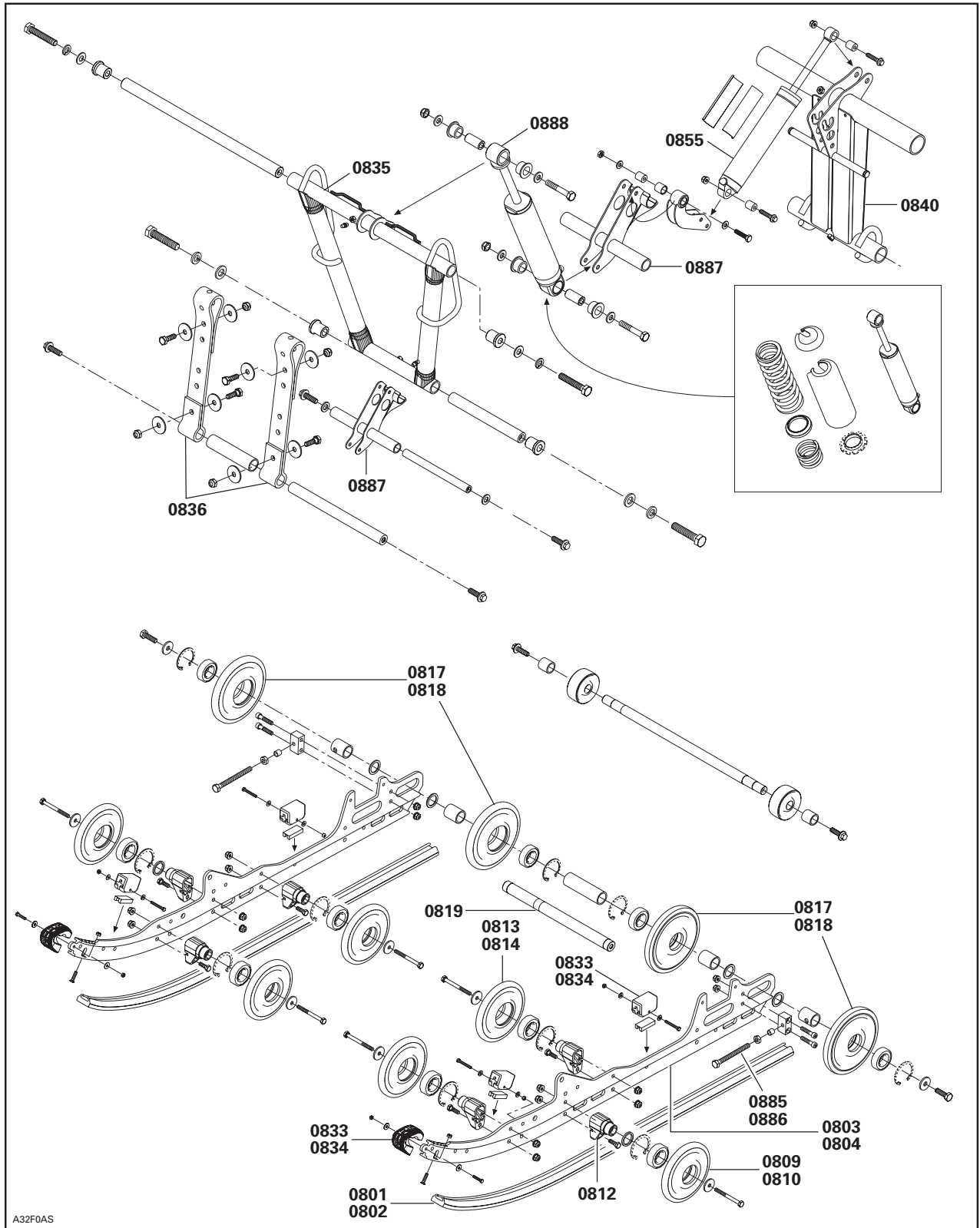
SYSTEM	CODE	<p align="center">SYSTEM 08 SYSTÈME 08</p>										
		MX Z X 440	MX Z 500 STD MX Z 500 TRAIL	FOR.DLX 500 STD	G.TOURING 500 STD	MX Z 600 X MX Z 600 ADRN	MX Z 600 STD MX Z 600 TRAIL	FOR. DLX 600 GSE	FOR. DLX 600 STD	G.TOURING 600 STD	SKANDIC 600 WT	SUMMIT 600 STD
		10	11	12	13	14	15	16	17	18	19	20

08 90	FRONT IDLER WHEELS A/O BEARINGS (5 OR 6) ROUE DE SUPPORT AVANT E/O ROULEMENT (5 OU 6)	0.7	0.7	0.7	0.7	0.7	0.7	0.7	0.7	0.7	0.7	0.7
08 91	REAR PIVOT ARM BRAS DE PIVOT ARRIÈRE										0.4	
08 92	FRONT TORSION SPRING (ONE) RESSORT DE TORSION AVANT (1)										0.3	
08 93	FRONT TORSION SPRING (TWO) RESSORTS DE TORSION AVANT (2)										0.4	
08 94	FRONT IDLER WHEEL (INSIDE) ROUES DE SUPPORT AVANT (INTÉRIEUR)	1.0	1.0	1.0	1.0	1.0	1.0	1.0	1.0	1.0		1.0
08 99	SPEEDOMETER DRIVE INSERT PRISE D'INDICATEUR DE VITESSE	0.4	0.4	0.4	0.4	0.4	0.4	0.4	0.4	0.4	0.4	0.4

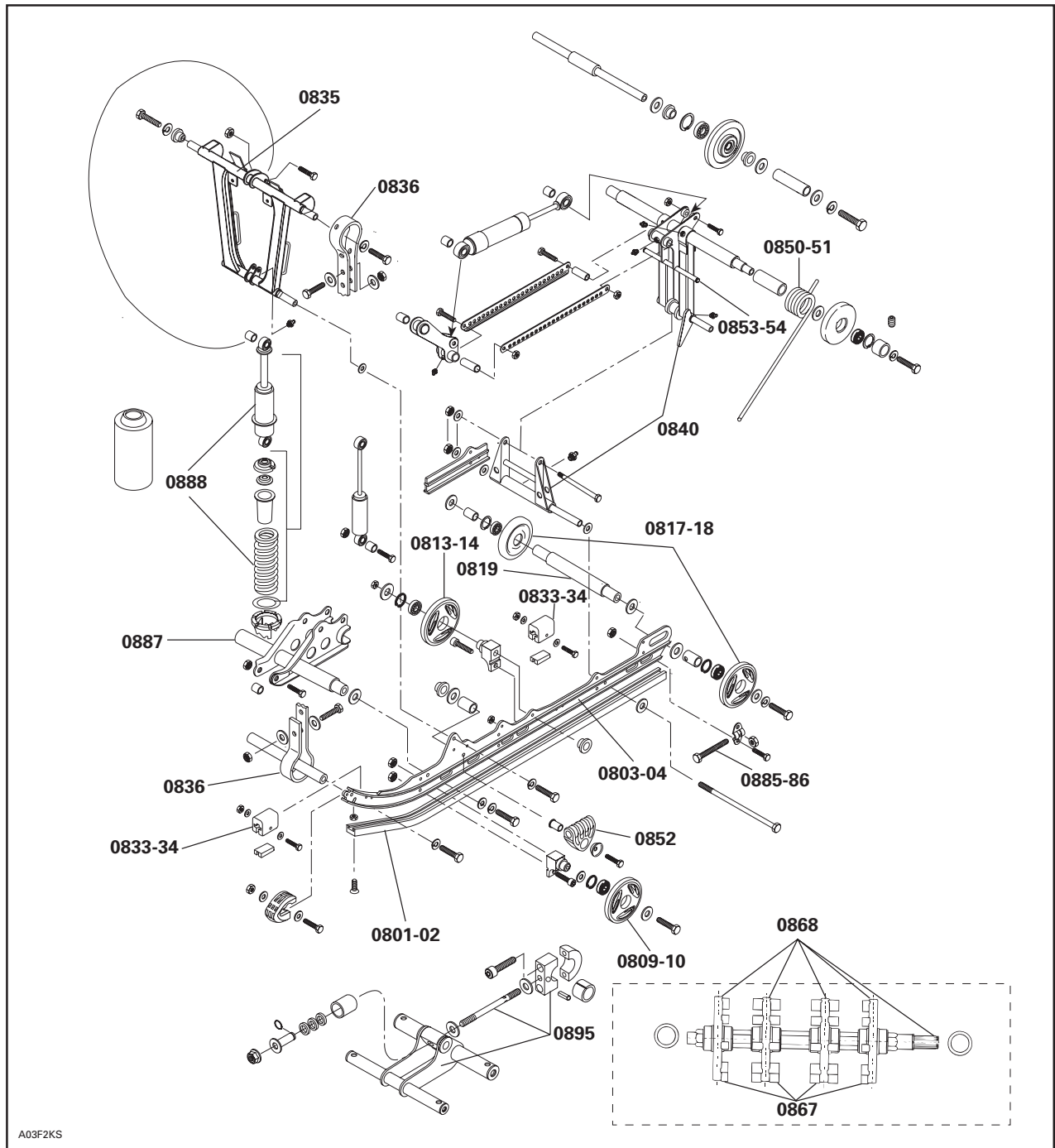
REAR SUSPENSION AND TRACK 08
SUSPENSION ARRIÈRE ET CHENILLE 08



REAR SUSPENSION AND TRACK 08
SUSPENSION ARRIÈRE ET CHENILLE 08



REAR SUSPENSION AND TRACK 08
SUSPENSION ARRIÈRE ET CHENILLE 08



**BODY
CARROSSERIE**

SYSTEM	CODE	SYSTEM 09 SYSTÈME 09	MX Z X 440	MX Z 500 STD MX Z 500 TRAIL	FOR. DLX 500 STD	G. TOURING 500 STD	MX Z 600 X MX Z 600 ADRN	MX Z 600 STD MX Z 600 TRAIL	FOR. DLX 600 GSE	FOR. DLX 600 STD	G. TOURING 600 STD	SKANDIC 600 WT	SUMMIT 600 STD
			10	11	12	13	14	15	16	17	18	19	20

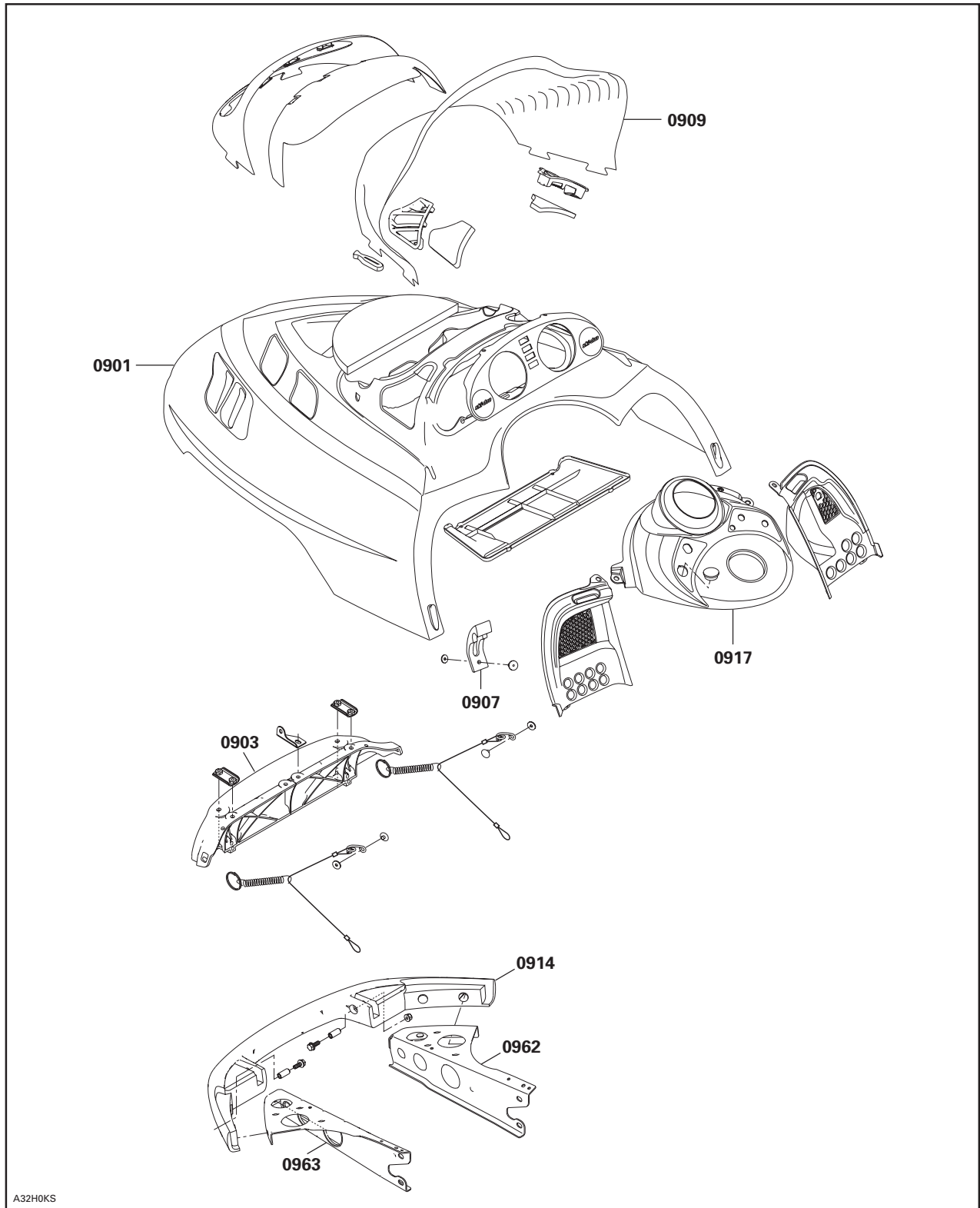
09 00	NO LABOR INVOLVED AUCUNE MAIN-D'ŒUVRE IMPLIQUÉE	0	0	0	0	0	0	0	0	0	0	0	0
09 01	CAB OR HOOD (UPPER) CABINE OU CAPOT (SUPÉRIEUR)	3.0	3.0	3.0	3.0	3.0	3.0	3.0	3.0	3.0	3.0	2.0	3.0
09 03	HOOD HINGE CHARNIÈRE DU CAPOT	0.3	0.3	0.3	0.3	0.3	0.3	0.3	0.3	0.3	0.3	0.3	0.3
09 05	CAB DECALS R.H. OR L.H. AUTOCOLLANTS GAUCHE OU DROIT DE LA CABINE	0.3	0.3	0.3	0.3	0.3	0.3	0.3	0.3	0.3	0.3	0.3	0.3
09 06	CAB DECALS ALL TOUS LES AUTOCOLLANTS DE LA CABINE	0.9	0.9	0.9	0.9	0.9	0.9	0.9	0.9	0.9	0.9	0.9	0.9
09 07	CAB LATCH (ONE OR TWO) ATTACHE DE LA CABINE (1 OU 2)	0.3	0.3	0.3	0.3	0.3	0.3	0.3	0.3	0.3	0.3	0.3	0.3
09 09	WINDSHIELD PARE-BRISE	0.3	0.3	0.3	0.3	0.3	0.3	0.3	0.3	0.3	0.3	0.3	0.3
09 13	LUGGAGE RACK SUPPORT À BAGAGES				0.4						0.4	0.4	
09 14	FRONT BUMPER OUTSID CAB A/O HOOD SEAL PARE-CHOCES AVANT EXTÉRIEUR CABINE E/O JOINT ETANC	0.4	0.4	0.4	0.4	0.4	0.4	0.4	0.4	0.4	0.4	0.6	0.4
09 16	FRONT BUMPER CAP (L.H. OR R.H.) EXTRÉMITÉ DU PAR-CHOCES AVANT											0.1	
09 17	CONSOLE CONSOLE	1.2	1.2	1.2	1.2	1.2	1.2	1.2	1.2	1.2	1.2	1.2	1.2
09 21	SEAT ASS'Y OR BACKREST SIÈGE OU DOSSIER	0.3	0.3	0.3	0.3	0.3	0.3	0.3	0.3	0.3	0.3	0.3	0.3
09 22	SEAT COVER AND/OR FOAM HOUSSE DE SIÈGE ET OU MOUSSE	1.1	1.1	1.1	1.5	1.1	1.1	1.1	1.1	1.1	1.5	1.2	1.1
09 24	BOTTOM PAN COQUE	2.0	2.0	2.0	2.0	2.0	2.0	2.0	2.0	2.0	2.0	2.0	2.0
09 30	REAR FOOT REST REPOSE-PIED ARRIÈRE				0.3						0.3		
09 33	HEAT EXCHANGER RADIATEUR	3.6	3.6	3.6	3.6	3.6	3.6	3.6	3.6	3.6	3.6	3.6	3.6
09 34	REAR BUMPER PARE-CHOCES ARRIÈRE	0.3	0.3	0.3	0.3	0.3	0.3	0.3	0.3	0.3	0.3	0.3	0.3

**BODY
CARROSSERIE**

SYSTEM	CODE	SYSTEM 09 SYSTÈME 09	MX Z X 440	MX Z 500 STD MX Z 500 TRAIL	FOR.DLX 500 STD	G.TOURING 500 STD	MX Z 600 X MX Z 600 ADRN	MX Z 600 STD MX Z 600 TRAIL	FOR. DLX 600 GSE	FOR. DLX 600 STD	G.TOURING 600 STD	SKANDIC 600 WT	SUMMIT 600 STD
			10	11	12	13	14	15	16	17	18	19	20

09 35	HITCH SUPPORT (ALL PARTS) SUPPORT D'ATTELAGE (TOUTES PIÈCES)											0.3	
09 40	BUMPER DECALS OR MOULDING AUTOCOLLANTS OU MOULURE DES PARE-CHOCS											0.3	
09 48	FRONT FOOT REST (RIGHT OR LEFT) REPOSE-PIED AVANT (GAUCHE OU DROIT)	1.0	1.0	1.0	1.0	1.0	1.0	1.0	1.0	1.0	1.0		1.0
09 49	FRAME ASS'Y OR FRONT MEMBER * CHASSIS OU CADRE AVANT	11.6	11.6	11.6	11.6	11.6	11.6	11.6	11.6	11.6	11.6	7.0	11.6
09 50	FRAME FORMING (TUNNEL) * TUNNEL	14.1	14.1	14.1	14.1	14.1	14.1	14.1	14.1	14.1	14.1		14.1
09 51	REAR CAP PARTIE ARRIÈRE DU CHASSIS	0.7	0.7	0.7	0.7	0.7	0.7	0.7	0.7	0.7	0.7		0.7
09 55	SNOW GUARD (ONE) GARDE NEIGE (1)	0.3	0.3	0.3	0.3	0.3	0.3	0.3	0.3	0.3	0.3	0.3	0.3
09 58	BACKREST AND/OR COVER DOSSIER ET/OU HOUSSE				0.3						0.3	0.3	
09 59	BACKREST ARM BRAS DU DOSSIER				0.3						0.3	0.3	
09 62	BOTTOM PAN SUPPORT (R.H) SUPPORT DE COQUE (DROIT)	0.7	0.7	0.7	0.7	0.7	0.7	0.7	0.7	0.7	0.7		0.7
09 63	BOTTOM PAN SUPPORT (L.H) SUPPORT COQUE (GAUCHE)	0.7	0.7	0.7	0.7	0.7	0.7	0.7	0.7	0.7	0.7		0.7
09 64	SEAT BELT COURROIE DE SIÈGE	0.3	0.3	0.3	0.3	0.3	0.3	0.3	0.3	0.3	0.3	0.3	0.3
09 65	MIRROR (1) RÉTROVISEUR (1)			0.3	0.3				0.3	0.3	0.3	0.3	
09 66	MIRRORS (2) RÉTROVISEURS (2)			0.3	0.3				0.3	0.3	0.3	0.3	
09 68	HOOD GUIDE RIGHT OR LEFT GUIDE DE CAPOT (GAUCHE OU DROIT)											0.3	
09 69	LOWER OR UPPER HOOD HINGE (1) CHARNIÈRE INFÉ OU SUPP DE CABINE (1)											0.6	
09 80	FRONT GRILL R.H AND OR L.H GRILLE AVANT GAUCHE ET OU DROITE	0.3	0.3	0.3	0.3	0.3	0.3	0.3	0.3	0.3	0.3	0.3	0.3
09 81	SIDE GRILL R.H AND OR L.H GRILLE LATÉRAL GAUCHE ET/OU DROITE	0.3	0.3	0.3	0.3	0.3	0.3	0.3	0.3	0.3	0.3	0.3	0.3

BODY 09
CARROSSERIE 09



A32H0KS

**ELECTRICAL SYSTEM
SYSTÈME ÉLECTRIQUE**

SYSTEM	CODE	SYSTEM 10 SYSTÈME 10	MX Z X 440	MX Z 500 STD MX Z 500 TRAIL	FOR.DLX 500 STD	G.TOURING 500 STD	MX Z 600 X MX Z 600 ADRN	MX Z 600 STD MX Z 600 TRAIL	FOR. DLX 600 GSE	FOR. DLX 600 STD	G.TOURING 600 STD	SKANDIC 600 WT	SUMMIT 600 STD
			10	11	12	13	14	15	16	17	18	19	20

10 00	NO LABOR INVOLVED AUCUNE MAIN-D'ŒUVRE IMPLIQUÉE	0	0	0	0	0	0	0	0	0	0	0	0
10 01	IGNITION SWITCH INTERRUPTEUR D'ALLUMAGE		0.3	0.3	0.3	0.3	0.3	0.3	0.3	0.3	0.3	0.3	0.3
10 02	DIMMER SWITCH COMMUTATEUR D'ÉCLAIRAGE	0.3	0.3	0.3	0.3	0.3	0.3	0.3	0.3	0.3	0.3	0.3	0.3
10 05	BRAKE LIGHT SWITCH INTERRUPTEUR DE FEU D'ARRÊT	0.3	0.3	0.3	0.3	0.3	0.3	0.3	0.3	0.3	0.3	0.3	0.3
10 06	TETHER CORD OR D.E.S.S SWITCH INTERRUPT COUPE-CIRCUIT OU D.E.S.S.	0.3	0.3	0.3	0.3	0.3	0.3	0.3	0.3	0.3	0.3	0.3	0.3
10 07	IGNITION SWITCH BLOCK LOGEMENT DE RECEPTABLE (INTERRUPTEUR)		0.3	0.3	0.3	0.3	0.3	0.3	0.3	0.3	0.3	0.3	0.3
10 08	CURRENT OR GROUND WIRE FIL DE BATTERIE OU DE MASSE			0.3	0.3				0.3	0.3	0.3	0.3	
10 09	HEADLAMP ASS'Y (ANY/OR ALL PARTS) PHARE (TOUTES LES PIÈCES)	0.3	0.3	0.3	0.3	0.3	0.3	0.3	0.3	0.3	0.3	0.3	0.3
10 10	VOLTAGE REGULATOR RÉGULATEUR DE TENSION	0.3	0.3	0.3	0.3	0.3	0.3	0.3	0.3	0.3	0.3	0.3	0.3
10 12	TAIL LIGHT ASS'Y (ANY/OR ALL PARTS) FEU ARRIÈRE (TOUTES LES PIÈCES)	0.3	0.3	0.3	0.3	0.3	0.3	0.3	0.3	0.3	0.3	0.3	0.3
10 13	BATT A/O RACK A/O RETAINER ROD A/O RETAINER BATT/SUPPORT/ TIGE COUVERC DE RETENU			0.3	0.3				0.3	0.3	0.3	0.3	
10 15	HEATED GRIPS POIGNÉES CHAUFFANTES	0.4	0.4	0.4	0.4	0.4	0.4	0.4	0.4	0.4	0.4	0.4	0.4
10 16	BULDS (ANY OR ALL) AMPOULES (1 OU TOUTES)	0.3	0.3	0.3	0.3	0.3	0.3	0.3	0.3	0.3	0.3	0.3	0.3
10 18	ONE SWITCH (HEATED THROTTLE OR HEATED GRIPS) (1) INTERRUPTEUR (POIGNÉE/MANETTE ACC CHAUFFANTE) (1)	0.3	0.3	0.3	0.3	0.3	0.3	0.3	0.3	0.3	0.3	0.3	0.3
10 19	TWO SWITCHES(HEATED THROTTLE AND HEAT. GRIPS)(2) INTERRUPTEURS (POIGN/MANETTE ACC CHAUFFANTE)(2)	0.3	0.3	0.3	0.3	0.3	0.3	0.3	0.3	0.3	0.3	0.3	0.3
10 20	BACK UP BUZZER AVERTISSEUR DE MARCHE ARRIÈRE			0.3	0.3				0.3	0.3	0.3	0.3	

**ELECTRICAL SYSTEM
SYSTÈME ÉLECTRIQUE**

SYSTEM	CODE	SYSTEM 10 SYSTÈME 10	MX Z X 440	MX Z 500 STD MX Z 500 TRAIL	FOR. DLX 500 STD	G. TOURING 500 STD	MX Z 600 X MX Z 600 ADRN	MX Z 600 STD MX Z 600 TRAIL	FOR. DLX 600 GSE	FOR. DLX 600 STD	G. TOURING 600 STD	SKANDIC 600 WT	SUMMIT 600 STD
			10	11	12	13	14	15	16	17	18	19	20

10	28	SPEEDOMETER OR TACHOMETER (ALL PARTS) INDICATEUR DE VITESSE OU COMPTE-TOURS (TOUTES PIÈCES)	0.3	0.3	0.3	0.3	0.3	0.3	0.3	0.3	0.3	0.3	0.3
10	44	FUEL GAUGE/TEMP GAUGE OR COMPONENT INDIC NIVEAU D'ESSENCE/TEMPÉRATURE ET COMPOSANTE							0.3	0.3		0.3	

CLAIM TYPE 02 USE ONLY 11
RÉCLAMATION DE TYPE 02 UTILISER SEULEMENT 11

SYSTEM	CODE	SYSTEM 11 SYSTÈME 11	MX Z X 440	MX Z 500 STD MX Z 500 TRAIL	FOR.DLX 500 STD	G.TOURING 500 STD	MX Z 600 X MX Z 600 ADRN	MX Z 600 STD MX Z 600 TRAIL	FOR. DLX 600 GSE	FOR. DLX 600 STD	G.TOURING 600 STD	SKANDIC 600 WT	SUMMIT 600 STD
			10	11	12	13	14	15	16	17	18	19	20

11	00	NO LABOR INVOLVED AUCUNE MAIN-D'ŒUVRE IMPLIQUÉE	0	0	0	0	0	0	0	0	0	0	0
----	----	--	---	---	---	---	---	---	---	---	---	---	---

