



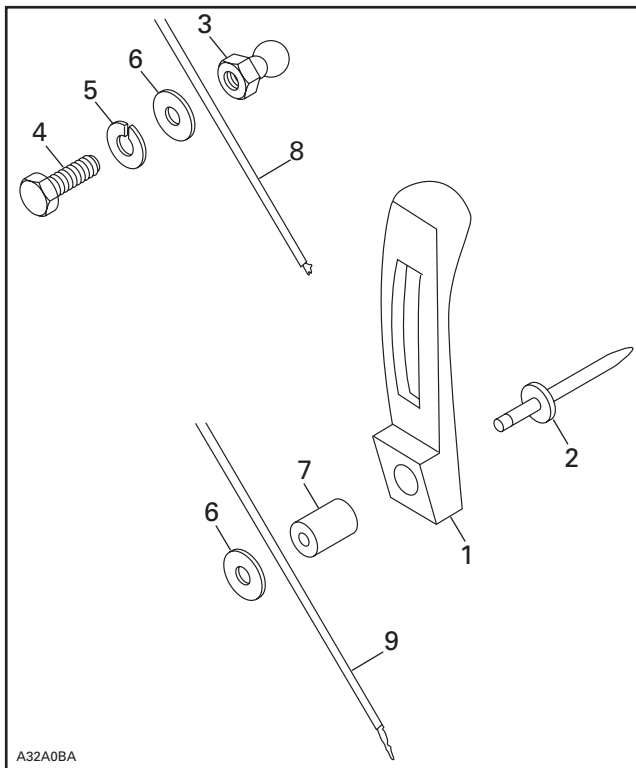
**HOOD LATCH KIT  
(P/N 861 773 900)**

**⚠ WARNING**

For safety reasons, this kit must be installed by an authorized Bombardier snowmobile dealer. Should removal of a locking device (e.g. lock tabs, self-locking fasteners, etc.) be required when undergoing disassembly/assembly, always replace with a new one. This instruction sheet should be given to the purchaser. This kit is designed for specific applicable models only. It is not recommended for units other than those for which it was sold.

NOTE: Installation time is approximately 0.3 hour.

**PARTS TO BE INSTALLED**

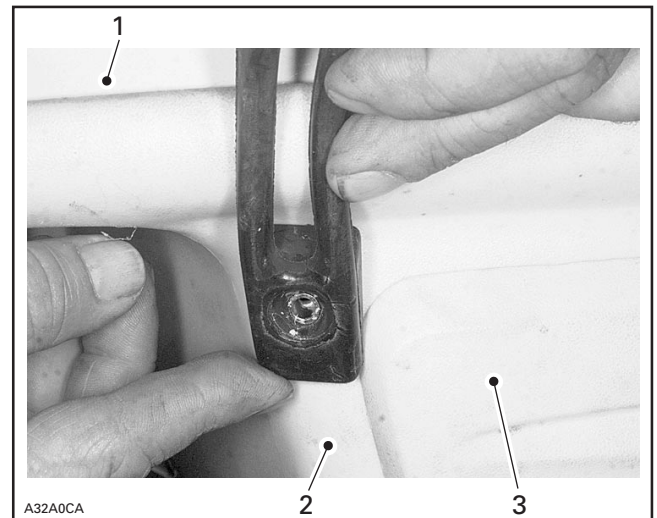


- 1. Latch (2)
- 2. Rivet 3/16 (2)
- 3. Knob (2)
- 4. Hexagonal Screw (2)
- 5. Lock Washer (2)
- 6. Flat Washer (4)
- 7. Bushing (2)
- 8. Shows Hood
- 9. Shows Pan

**INSTRUCTIONS**

**Installation on Sides**

As per following illustration, align left side latch on pan, in front of pulley door.



- 1. Hood
- 2. Pan
- 3. Pulley door

Mark hole and drill a 4.7 mm (13/64 in) hole in pan. Insert bushing no. 7 in latch no. 1, align flat washer no. 6 inside pan and secure latch to pan from outside, using rivet no. 2.

Align latch as straight as possible on hood and mark, **without stretching latch**, most upward edge inside latch opening.

From that mark, go 12.7 mm (1/2 in) straight higher and drill a 5.5 mm (7/32 in) hole in hood.

From inside of hood, insert hexagonal screw no. 4 with lock washer no. 5 and flat washer no. 6.

From outside of hood, retain with knob no. 3.

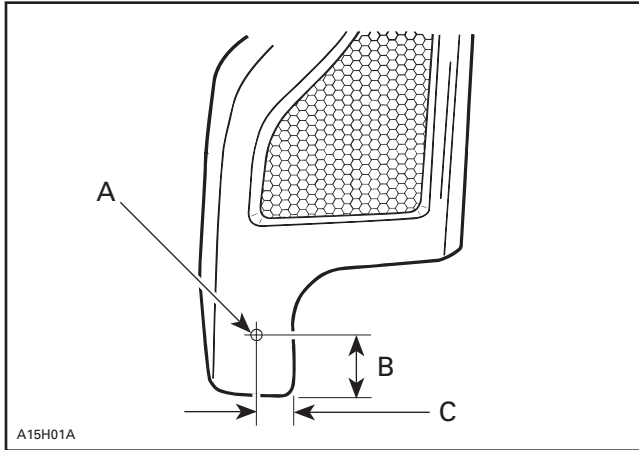
Tighten screw/knob.

Repeat procedure on right side.

Installation is now complete.

## Installation at Rear

From inside of hood, drill a 5.5 mm (7/32 in) hole on each side as per following illustration.

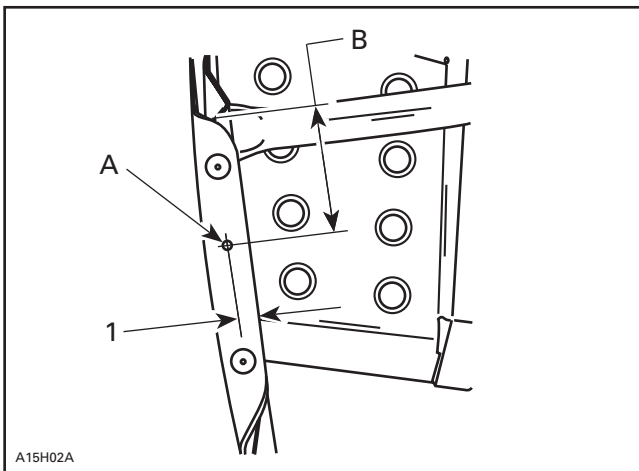


### LEFT SIDE SHOWN

- A. 5.5 mm (7/32 in) diameter hole
- B. 45 mm (1-25/32 in)
- C. 25 mm (1 in)

On each side, install parts **3**, **4**, **5** and **6** in the same order than side installation above.

Drill a 4.7 mm (13/64 in) hole on each side, on rear edge of pan, as per following illustration.



### LEFT SIDE SHOWN

- 1. In center of edge
- A. 4.7 mm (13/64 in) diameter hole
- B. 80 mm (3-5/32 in)

On each side, install parts **1**, **2**, **6** and **7** in the same order than side installation above.

Installation is now complete.

## 861 773 900

|    |             |                     |                    |
|----|-------------|---------------------|--------------------|
| 1. | 570 025 900 | Latch (2)           | Loquet (2)         |
| 2. | 390 906 800 | Rivet 3/16 (2)      | Rivet 3/16 (2)     |
| 3. | 517 245 800 | Knob (2)            | Bouton (2)         |
| 4. | 207 151 444 | Hexagonal Screw (2) | Vis hexagonale (2) |
| 5. | 234 151 401 | Lock Washer (2)     | Rondelle-frein (2) |
| 6. | 391 301 600 | Flat Washer (4)     | Rondelle plate (4) |
| 7. | 517 245 900 | Bushing (2)         | Douille (2)        |