



**HIGH PROFILE TRACK KIT (15 IN X 121 IN)
1.75 IN PROFILE (44.5 MM)
(P/N 860 305 800)**

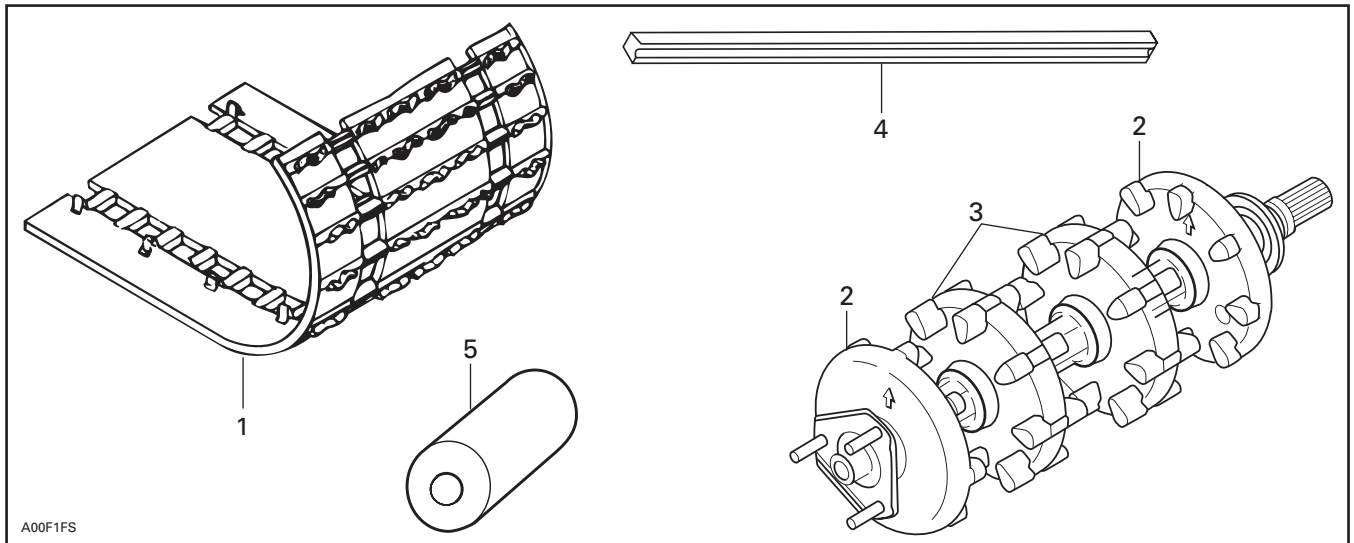
⚠ WARNING

For safety reasons, this kit must be installed by an authorized Bombardier snowmobile dealer. Should removal of a locking device (e.g. lock tabs, self-locking fasteners, etc.) be required when undergoing disassembly/assembly, always replace with a new one. This instruction sheet should be given to the purchaser. This kit is designed for specific applicable models only. It is not recommended for units other than those for which it was sold.

NOTE: Installation time is approximately 2.5 hours.

CAUTION: This kit is designed for deep snow application only.

PARTS TO BE INSTALLED



1. Track
2. Half-Sprocket (9 teeth) (2)
3. Sprocket (9 teeth) (2)
4. Radiator Protector (2)
5. Plastic Bushing (2)

VEHICLE PREPARATION

NOTE: If additional information is required, refer to *Ski-Doo Shop Manual*, section 07 for proper removal/installation procedures.

Raise rear of vehicle and block safely.

Remove rear suspension and track.

Discard track.

INSTALLATION

If needed, change radiator protectors **no. 4**.

Modify also drive axle, if needed. Remove sprockets and half-sprockets from drive axle and replace them with new sprockets **no. 3** and new half-sprockets **no. 2**.

Refer to *Ski-Doo Shop Manual* for sprocket change procedure.

Reinstall drive axle with new sprockets.

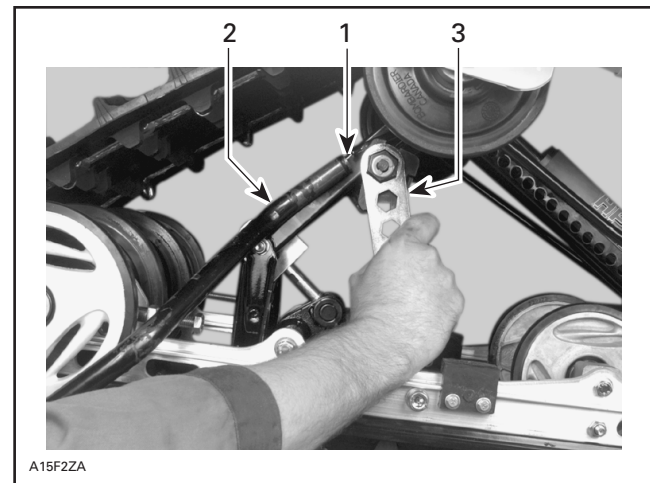
Install new track **no. 1**, paying close attention to the direction of rotation (arrows are engraved on track).

Unscrew set screws from locking ring at each end of the top axle.

Remove locking rings and top idler wheels.

Remove spring ends from adjusting cams as follows:

Slightly turn adjusting cam to expose spring end. Use spring installer (P/N 529 005 000), remove spring end from adjusting cam to remove spring tension.



1. Spring end
2. Tool
3. Turn the cam

Remove existing plastic bushings (1 on each side). Install new bushings **no. 5**.

Reinstall spring end in cam using tool and adjust cam.

Reinstall idler wheels and locking rings.

Tighten set screws.

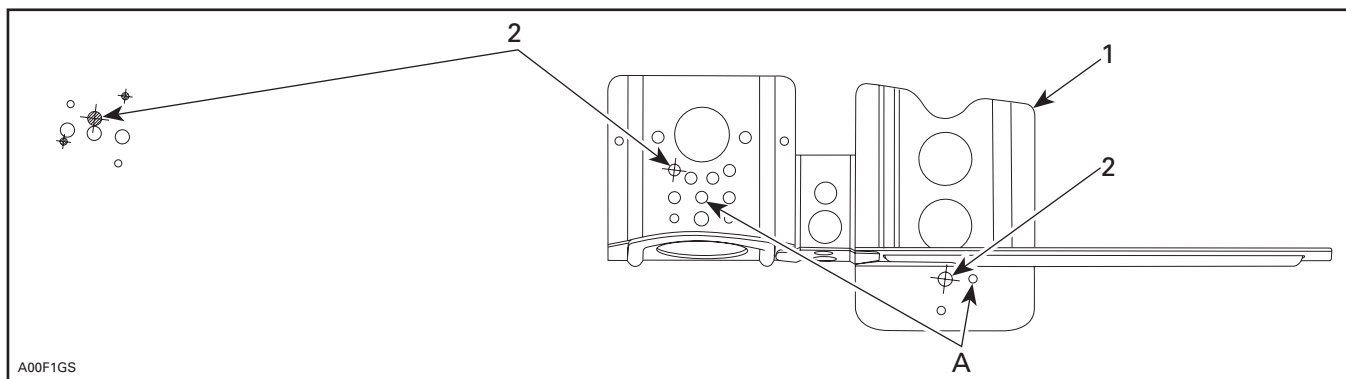
Pay attention to move the middle arm upper axle assembly down on the front bracket.

Drill hole **A** to 8.4 mm (21/64 in), refer to the following illustration.

Reinstall rear suspension in tunnel.

CAUTION: Never use the lower hole in the bracket to secure the rear suspension arm. Damage to the tunnel may occur.

Check for proper operation of new track. If needed, preform track adjustment according to *Ski-Doo Shop Manual*.



FRONT BRACKET RH SIDE SHOWN

1. Template (existing bracket)
2. Formerly used holes
- A. Drill these holes 8.4 mm (21/64 in)

860 305 800

1.	504 151 841	Track	Chenille
2.	415 117 700	Half-Sprocket (9 teeth) (2)	Demi-barbotin (9 dents) (2)
3.	415 117 600	Sprocket (9 teeth) (2)	Barbotin (9 dents) (2)
4.	415 012 300	Radiator Protector (2)	Protecteur de radiateur (2)
5.	572 086 100	Plastic Bushing (2)	Douille de plastique (2)