



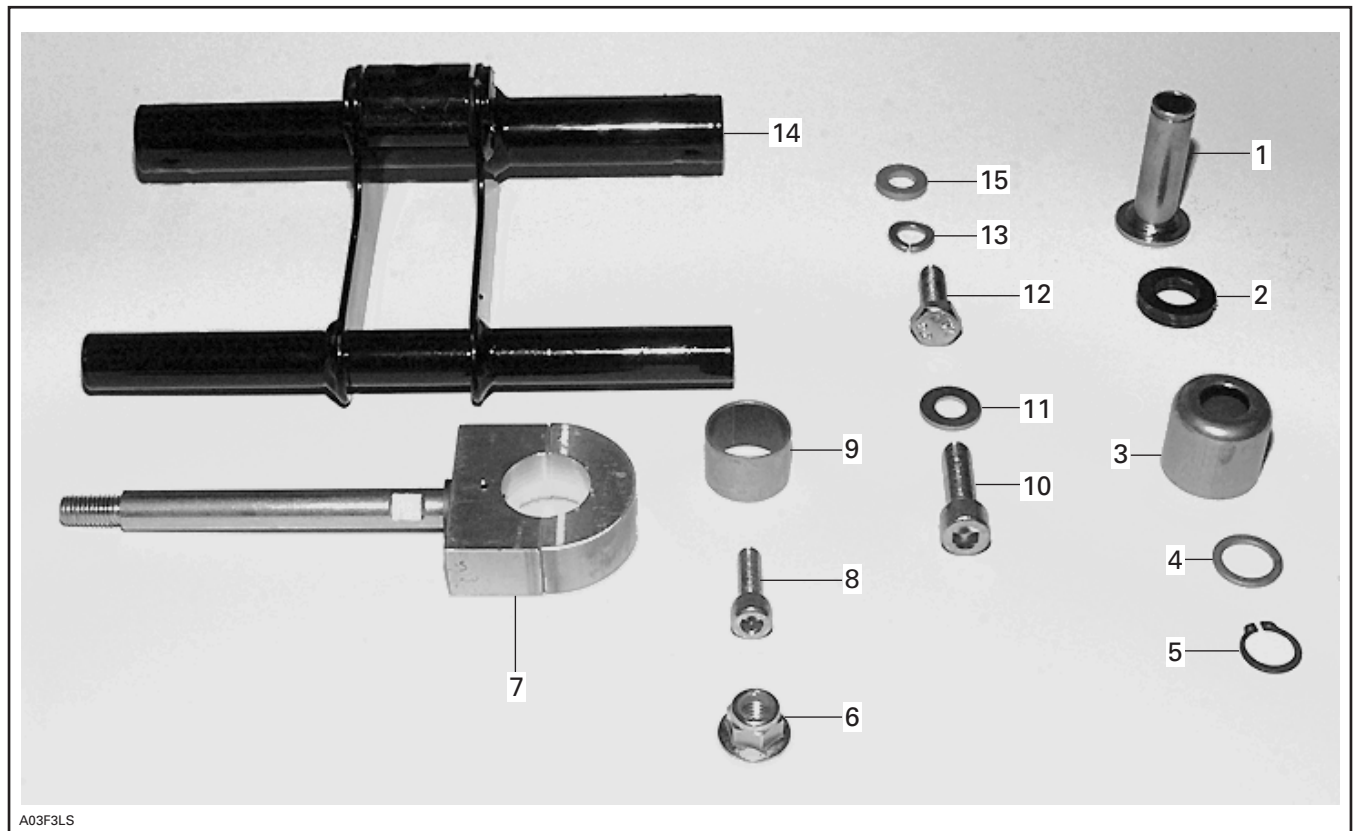
**ACM SUSPENSION KIT
(P/N 860 501 800)**

◆ WARNING

For safety reasons, this kit must be installed by an authorized Bombardier snowmobile dealer. Should removal of a locking device be required when undergoing disassembly/assembly, always replace with a new one. This instruction sheet should be given to the purchaser. This kit is designed for specific applicable models only. It is not recommended for units other than those for which it was sold.

NOTE: Installation time is approximately 0.5 hour.

PARTS TO BE INSTALLED



A03F3LS

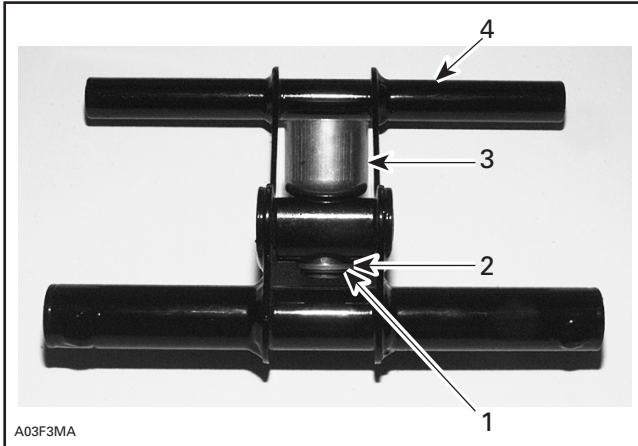
- | | |
|----------------------------|----------------------------------|
| 1. Welded Bushing | 9. Cushion |
| 2. Rubber Stopper (3) | 10. Allen Screw M10 x 35 (2) |
| 3. Cup | 11. Flat Washer M10 (2) |
| 4. Washer | 12. Hexagonal Screw M10 x 30 (2) |
| 5. Circlip | 13. Arched Lock Nut (4) |
| 6. Elastic Flanged Nut M10 | 14. Welded Bracket |
| 7. Pivot Block Ass'y | 15. Hardened Flat Washer (2) |
| 8. Allen Screw M8 x 30 | |

PROCEDURE

Bushing Assembling

Insert rubber stoppers **no. 2** in welded bushing **no. 1** and recover them with cup **no. 3**.

Introduce assembly in the welded bracket's hole and secure with washer **no. 4** and circlip **no. 5**.



- 1. Circlip
- 2. Washer
- 3. Bushing Assembly
- 4. Welded Bracket

NOTE: Take care to install bushing assembly with cup on flat side of the bracket's hole.

Bracket Installation

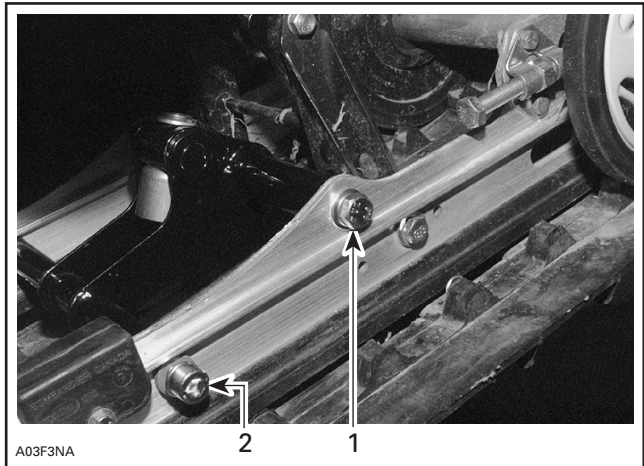
Install bracket with the larger axle backward.

Secure rear axle with hexagonal screws **no. 12**, arched lock nuts **no. 13** and flat washers **no. 11**.

Position front axle in place and secure with Allen screws **no. 10**, arched lock nuts **no. 13** and hardened flat washers **no. 15**.

▼ CAUTION

Loctite 242 or Loctite 243 must be applied on threads for proper assembly.



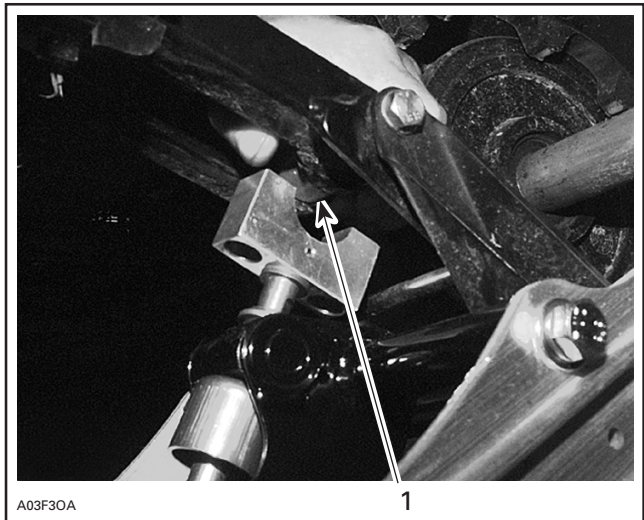
WELDED BRACKET INSTALLED

- 1. Rear axle secured with hexagonal screws
- 2. Front axle secured with Allen screws

Pivot Installation

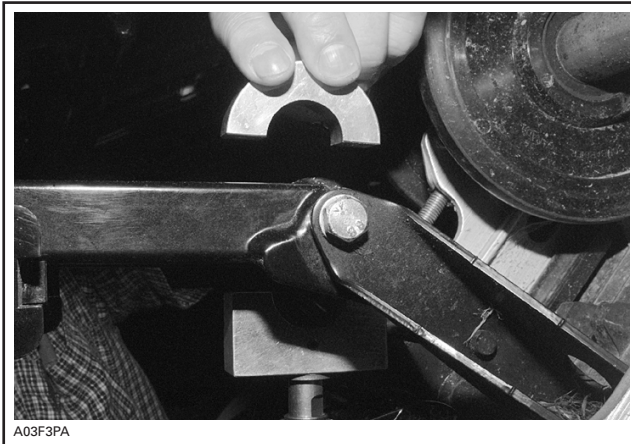
Split cushion **no. 9** and place it on the center of the axle of the rear suspension arm.

Unscrew head of pivot **no. 7** and slide shaft of pivot into the bushing assembly.

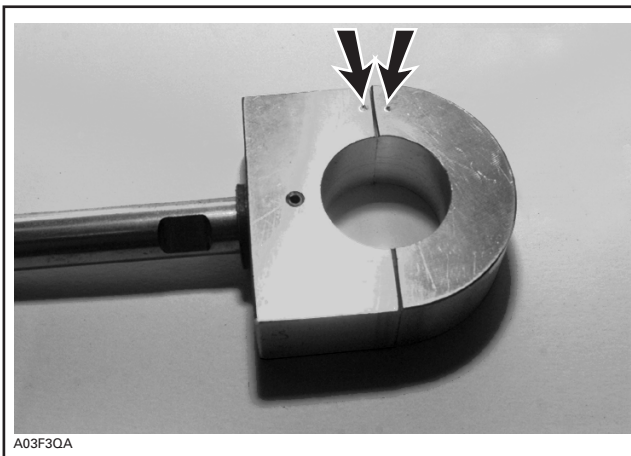


- 1. Cushion

Install pivot assembly around the cushion **no. 9**.
See photo below.



NOTE: Take care to align the dot marks on both parts of head of pivot.



MARKS MUST BE BESIDE ONE EACH OTHER

Screw pivot head's Allen screw and complete with the other Allen screw **no. 8**.

Anchor shaft of pivot to welded bracket with elastic flanged nut **no. 6**.

860 501 800

| | | | |
|-----|-------------|------------------------------|--|
| 1. | 503 172 900 | Welded Bushing | Douille soudée |
| 2. | 570 049 600 | Rubber Stopper (3) | Butée de caoutchouc (3) |
| 3. | 503 103 600 | Cup | Coupole |
| 4. | 503 183 400 | Washer | Rondelle |
| 5. | 371 910 700 | Circlip | Circlip |
| 6. | 233 201 414 | Elastic Flanged Nut M10 | Écrou d'arrêt élastique à épaulement M10 |
| 7. | 503 189 044 | Pivot Block Ass'y | Bloc de pivot (complet) |
| 8. | 205 083 044 | Allen Screw M8 x 30 | Vis Allen M8 x 30 |
| 9. | 415 027 800 | Cushion | Coussinet |
| 10. | 205 003 544 | Allen Screw M10 x 35 (2) | Vis Allen M10 x 35 (2) |
| 11. | 224 001 211 | Flat Washer M10 (2) | Rondelle plate M10 (2) |
| 12. | 207 103 044 | Hexagonal Screw M10 x 30 (2) | Vis hexagonale M10 x 30 (2) |
| 13. | 224 701 188 | Arched Lock Nut (4) | Écrou autobloquant cintré (4) |
| 14. | 503 188 969 | Welded Bracket | Support soudé |
| 15. | 503 176 700 | Hardened Flat Washer (2) | Rondelle plate trempée (2) |