

ski-doo®



SHOP MANUAL 1999

484 200 003

Volume 2

GRAND TOURING 500/583
SUMMIT 500/x 670
MX Z 440/500/670 H.O.
FORMULA Z 500/583/670
FORMULA DELUXE 500 LC/583/670
SKANDIC WT/SWT/WT LC

1999 ***Shop Manual***

VOLUME 2

MX Z 440/500/670 HO/670 HO T.H.
FORMULA Z 500/DELUXE 500 LC/Z 583/
DELUXE 583/Z 670/DELUXE 670
SUMMIT 500/X 670
GRAND TOURING 500/583
SKANDIC WT/SWT/WT LC

BOMBARDIER
RECREATIONAL PRODUCTS





Legal deposit:

National Library of Quebec

4th trimester 1998

National Library of Canada 1998

All rights reserved. No parts of this manual may be reproduced in any form without the prior written permission of Bombardier Inc.

©Bombardier Inc. 1998

Technical Publications

Bombardier Inc.

Valcourt (Quebec) Canada

Printed in Canada

®*Registered trademarks of Bombardier Inc.

This document contains the trademarks of the following companies:

Kimtowels® is a trademark of Kimberly-Clark

Loctite® is a trademark of Loctite Corporation

Metton® is a trademark of Hercules Inc.

Molykote® is a trademark of Dow Corning Corporation

Silastic® is a trademark of Dow Corning Corporation

Snap-on® is a trademark of Snap-on Tools Corporation

Versilube® is a trademark of General Electric Company

Supertanium™ is a trademark of Premier Industrial Corporation

TABLE OF CONTENTS

SECTION	SUBSECTION	PAGE
	SAFETY NOTICE	III
	WHAT'S NEW	IV
	INTRODUCTION	V
01	SERVICE TOOLS AND SERVICE PRODUCTS	
	01 – Service tools.....	01-01-1
	02 – Service products.....	01-02-1
02	LUBRICATION AND MAINTENANCE	
	01 – Lubrication and maintenance chart	02-01-1
03	TROUBLESHOOTING	
	01 – Table of contents.....	03-01-1
	02 – Engine	03-02-1
	03 – Fuel and oil systems.....	03-03-1
	04 – Transmission and brake systems	03-04-1
	05 – Electrical system	03-05-1
	06 – Suspension and track	03-06-1
04	ENGINE	
	01 – Table of contents.....	04-01-1
	02 – 443 and 503 engine types.....	04-02-1
	03 – 494, 583 and 670 engine types	04-03-1
	04 – Leak test and engine dimension measurement	04-04-1
	05 – CDI system.....	04-05-1
	06 – Oil injection system.....	04-06-1
	07 – Axial fan cooling system.....	04-07-1
	08 – Liquid cooling system.....	04-08-1
	09 – Rotary valve, coolant pump and reservoir	04-09-1
	10 – Rewind starter.....	04-10-1
	11 – Carburetor and fuel pump	04-11-1
	12 – Fuel tank and throttle cable	04-12-1
05	TRANSMISSION	
	01 – Table of contents.....	05-01-1
	02 – Drive belt	05-02-1
	03 – Drive pulley.....	05-03-1
	04 – Driven pulley.....	05-04-1
	05 – Pulley distance and alignment.....	05-05-1
	06 – Brake	05-06-1
	07 – Chaincase	05-07-1
	08 – Gearbox.....	05-08-1
	09 – Drive chain.....	05-09-1
06	ELECTRICAL	
	01 – Table of contents.....	06-01-1
	02 – Ignition timing.....	06-02-1
	03 – Spark plugs.....	06-03-1
	04 – Battery.....	06-04-1
	05 – Electric starter	06-05-1
	06 – Testing procedure	06-06-1

TABLE OF CONTENTS

SECTION	SUBSECTION	PAGE
07 REAR SUSPENSION	01 – Table of contents	07-01-1
	02 – SC-10 suspensions (all versions).....	07-02-1
	03 – ARM suspension.....	07-03-1
	04 – Skandic WT suspension.....	07-04-1
	05 – Drive axle	07-05-1
	06 – Track	07-06-1
08 STEERING/ FRONT SUSPENSION	01 – Table of contents	08-01-1
	02 – Steering system.....	08-02-1
	03 – Suspension and ski system	08-03-1
09 BODY/FRAME	01 – Table of contents	09-01-1
	02 – Body.....	09-02-1
	03 – Frame.....	09-03-1
10 TECHNICAL DATA	01 – SI metric information guide.....	10-01-1
	02 – Engines	10-02-1
	03 – Vehicles.....	10-03-1
	04 – Technical data legends.....	10-04-1
11 WIRING DIAGRAMS	01 – Wiring diagrams	11-01-1

SAFETY NOTICE

This manual has been prepared as a guide to correctly service and repair some 1999 Ski-Doo snowmobiles. See model list on next page.

This edition was primarily published to be used by snowmobile mechanics who are already familiar with all service procedures relating to Bombardier made snowmobiles.

Please note that the instructions will apply only if proper hand tools and special service tools are used.

This *Shop Manual* uses technical terms which may be slightly different from the ones used in the *Parts Catalog*.

It is understood that this manual may be translated into another language. In the event of any discrepancy, the English version shall prevail.

The content depicts parts and/or procedures applicable to the particular product at its time of manufacture. It does not include dealer modifications, whether authorized or not by Bombardier, after manufacturing the product.

In addition, the sole purpose of the illustrations throughout the manual, is to assist identification of the general configuration of the parts. They are not to be interpreted as technical drawings or exact replicas of the parts.

The use of Bombardier parts is most strongly recommended when considering replacement of any component. Dealer and/or distributor assistance should be sought in case of doubt.

The engines and the corresponding components identified in this document should not be utilized on product(s) other than those mentioned in this document.

Torque wrench tightening specifications must be strictly adhered to. Locking devices (ex.: locking tab, elastic stop nut, etc.) must be installed or replaced with new ones, where specified. If the efficiency of a locking device is impaired, it must be renewed.

This manual emphasizes particular information denoted by the wording and symbols:

 WARNING
--

Identifies an instruction which, if not followed, could cause serious personal injury including possibility of death.

 CAUTION
--

Denotes an instruction which, if not followed, could severely damage vehicle components.
--

NOTE: Indicates supplementary information needed to fully complete an instruction.

Although the mere reading of such information does not eliminate the hazard, your understanding of the information will promote its correct use. Always use common shop safety practice.

This information relates to the preparation and use of Bombardier snowmobiles and has been utilized safely and effectively by Bombardier Inc. However, Bombardier Inc. disclaims liability for all damages and/or injuries resulting from the improper use of the contents. We strongly recommend that any services be carried out and/or verified by a highly skilled professional mechanic. It is understood that certain modifications may render use of the vehicle illegal under existing federal, provincial and state regulations.

WHAT'S NEW

WHAT'S NEW

SERVICE TOOLS AND SERVICE PRODUCTS 01

- Complete list of SKI-DOO service tools.

443 AND 503 ENGINES TYPES 04-02

- Lithium grease on crankshaft seal lip is replaced by Molykote 111.

494, 583 AND 670 ENGINES TYPES 04-03

- Lithium grease on crankshaft seal lip is replaced by Molykote 111.

OIL INJECTION SYSTEM 04-06

- Procedure for leak test.

AXIAL FAN COOLING SYSTEM 04-07

- Procedures for checking belt deflection and to replace it.

SC-10 SUSPENSION (ALL VERSIONS) 07-02

- Wear limit of slider shoe is now indicated by a line.

ARM SUSPENSION 07-03

- Wear limit of slider shoe is now indicated by a line.

INTRODUCTION

This *Shop Manual Volume 2* covers the following Bombardier made 1999 snowmobiles:

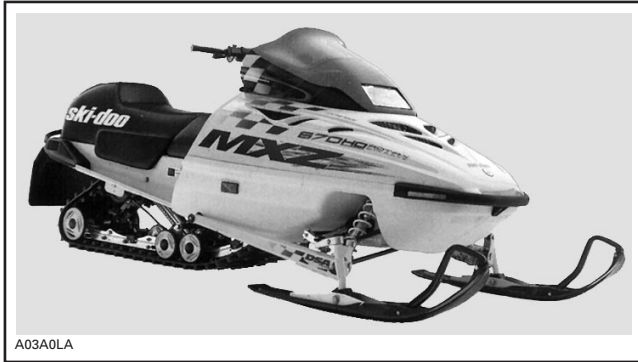
MODELS	MODEL NUMBER	MODELS	MODEL NUMBER
MX Z 440 (Canada).....	1409	FORMULA* DELUXE 583 (U.S.).....	1381
MX Z 440 (Canada).....	1448	FORMULA* Z 583 (Canada)	1391
MX Z 440 (U.S.)	1410	FORMULA* Z 583 (U.S.).....	1392
MX Z 440 (U.S.)	1449	FORMULA* Z 670 (Canada)	1393
MX Z 440 (Europe)	1411	FORMULA* Z 670 (U.S.).....	1394
MX Z 500 (Canada).....	1412	FORMULA* Z 670 (Europe).....	1395
MX Z 500 (Canada).....	1450	FORMULA DELUXE 670 (Canada)	1382
MX Z 500 (U.S.)	1413	FORMULA DELUXE 670 (U.S.).....	1383
MX Z 500 (U.S.)	1451	SUMMIT 500 (Canada)	1403
MX Z 500 (Europe)	1414	SUMMIT 500 (U.S.).....	1404
MX Z 670 HO (Canada)	1415	SUMMIT 500 (Europe).....	1405
MX Z 670 HO (Canada)	1452	SUMMIT X 670 (Canada).....	1406
MX Z 670 HO T.H. (Canada).....	1465	SUMMIT X 670 (U.S.)	1407
MX Z 670 HO (U.S.).....	1416	SUMMIT X 670 (Europe)	1408
MX Z 670 HO (U.S.).....	1453	GRAND TOURING 500 (Canada)	1367
MX Z 670 HO T.H. (U.S.)	1466	GRAND TOURING 500 (U.S.).....	1368
MX Z 670 HO (Europe).....	1417	GRAND TOURING 500 (Europe).....	1369
FORMULA* Z 500 (Canada).....	1388	GRAND TOURING 583 (Canada)	1370
FORMULA* Z 500 (U.S.)	1389	GRAND TOURING 583 (U.S.).....	1371
FORMULA* Z 500 (Europe)	1458	GRAND TOURING 583 (Europe).....	1372
FORMULA* DELUXE 500 LC (Canada).....	1377	SKANDIC* WT (Canada)	1429
FORMULA* DELUXE 500 LC (U.S.)...	1378	SKANDIC* WT (U.S.)	1430
FORMULA* DELUXE 500 LC (Europe)	1379	SKANDIC* SWT (Canada)	1431
FORMULA* DELUXE 583 (Canada) ..	1380	SKANDIC* SWT (U.S.).....	1432
		SKANDIC* WT LC (Canada).....	1427
		SKANDIC* WT LC (U.S.).....	1428

*Trademarks of Bombardier Inc.

INTRODUCTION

MX Z 440/500/670 HO/670 HO T.H.
Formula Z 500/DELUXE 500 LC/Z 583
Formula DELUXE 583/Z 670/DELUXE 670
Summit 500/X 670
Grand Touring 500/583

These are S-Series models.



TYPICAL — S-SERIES

Skandic WT
Skandic SWT
Skandic WT LC

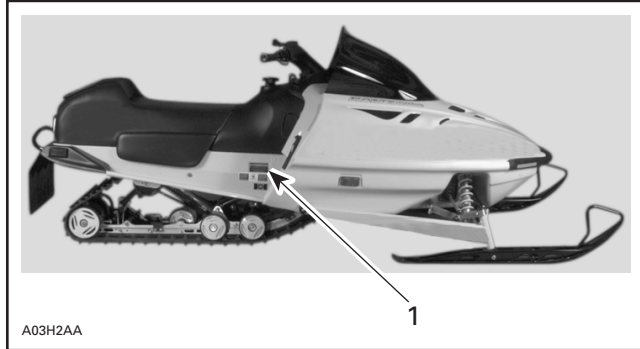
These are Skandic WT Series models.



TYPICAL — SKANDIC WT SERIES

VEHICLE SERIAL NUMBER

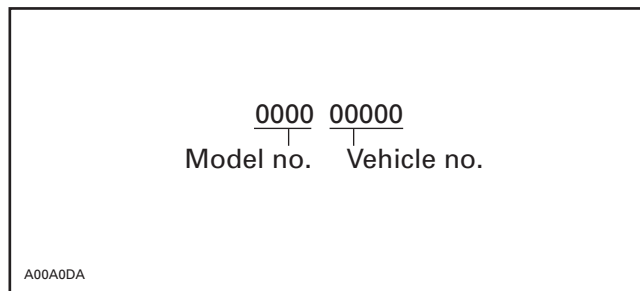
Vehicle Serial Number Location



TYPICAL

1. Vehicle serial number

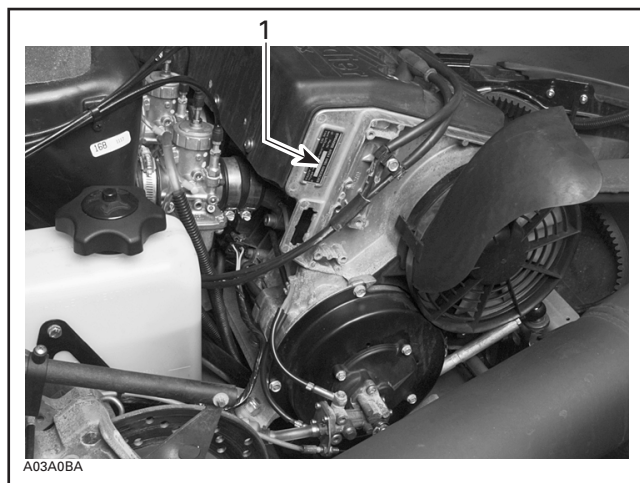
Serial Number Meaning



ENGINE SERIAL NUMBER

Engine Serial Number Location

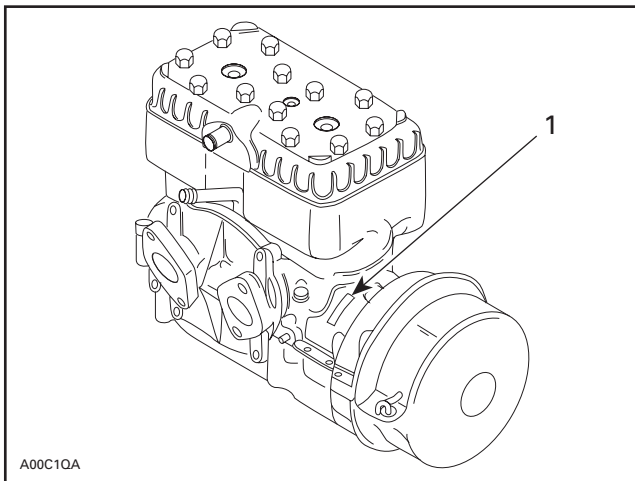
Fan-Cooled Engines



TYPICAL — FAN-COOLED ENGINES

1. Engine serial number

Liquid-Cooled Engines



TYPICAL — LIQUID-COOLED ENGINES

1. Engine serial number

ARRANGEMENT OF THE MANUAL

The manual is divided into 11 major sections:

01 SERVICE TOOLS AND SERVICE PRODUCTS

02 LUBRICATION AND MAINTENANCE

03 TROUBLESHOOTING

04 ENGINE

05 TRANSMISSION

06 ELECTRICAL

07 REAR SUSPENSION

08 STEERING/FRONT SUSPENSION

09 BODY/FRAME

10 TECHNICAL DATA

11 WIRING DIAGRAMS

Each section is divided in various subsections, and again, each subsection has one or more division.

INTRODUCTION

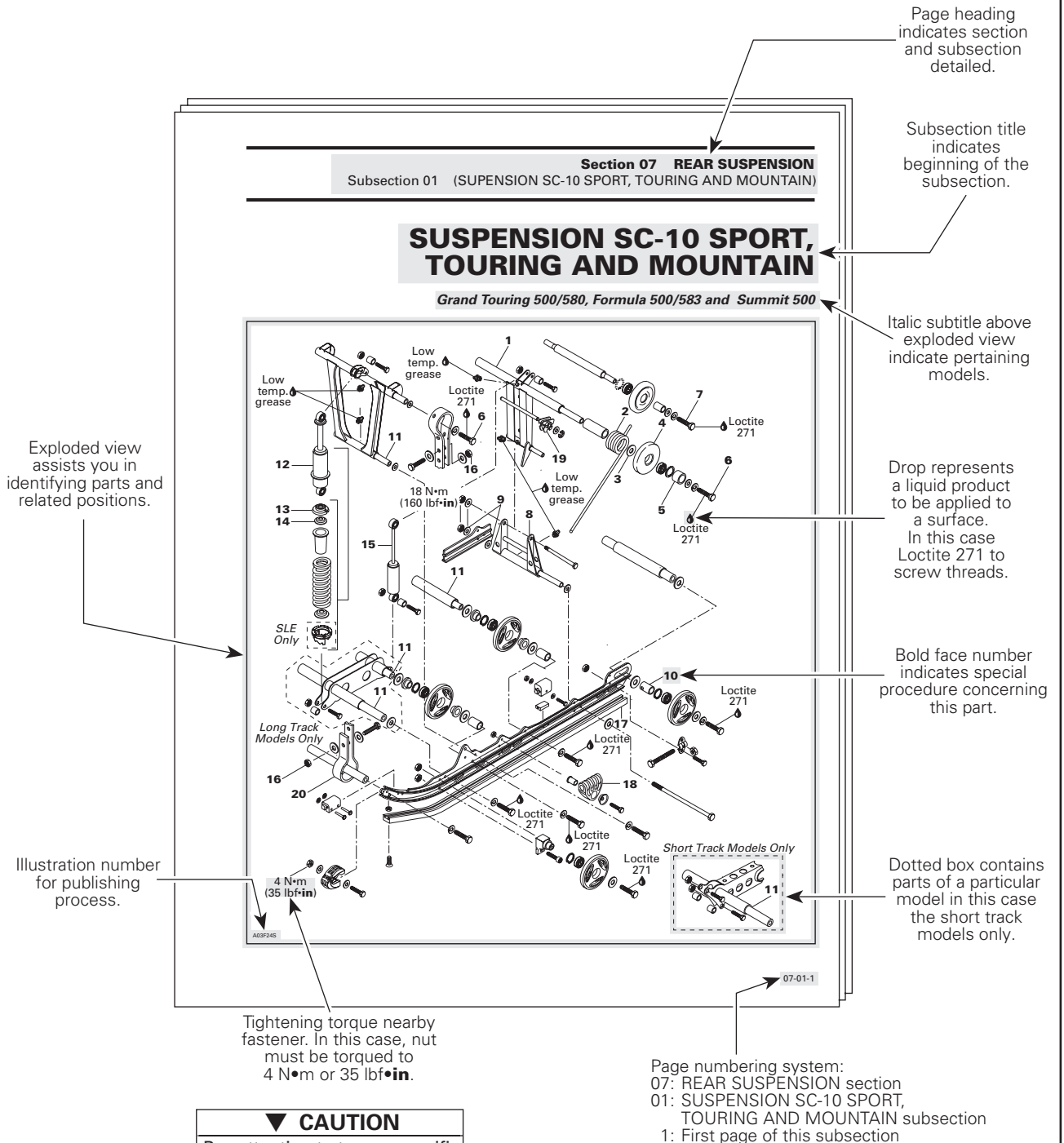
LIST OF ABBREVIATIONS USED IN THIS MANUAL

A	ampere
amp	ampere
A•h	ampere-hour
AC	alternate current
ACM	acceleration and control modulator
ARM	advance ride management
BDC	bottom dead center
BTDC	before top dead center
°C	degree Celsius
CDI	capacitor discharge ignition
CTR	center
cm	centimeter
cm ²	square centimeter
cm ³	cubic centimeter
DC	direct current
DPM	digital performance management
DSA	direct shock action
°F	degree Fahrenheit
FC	fan cooled
fl. oz	fluid ounce
ft	foot
GRD	ground
H.A.C.	high altitude compensator
hal.	halogen
HI	high
imp. oz	imperial ounce
in	inch
in ²	square inch
in ³	cubic inch
k	kilo (thousand)
kg	kilogram
km/h	kilometer per hour
kPa	Kilopascal
L	liter
lb	pound

lbf	pound (force)
lbf/in ²	pound per square inch
LH	left hand
LO	low
LT	long track
m	meter
MAG	magneto
Max.	maximum
Min.	minimum
mL	milliliter
mm	millimeter
MPEM	multi-purpose electronic module
MPH	mile per hour
N	newton
N.A.	not applicable
no.	number
00.0	continuity
O.L	overload (open circuit)
O.D.	outside diameter
OPT	optional
oz	ounce
P/N	part number
PSI	pound per square inch
PTO	power take off
R	rectangular
RH	right hand
RAVE	rotax adjustable variable exhaust
RPM	revolution per minute
RMS	root mean square
RRIM	reinforced reaction injection molding
Sp. Gr.	specific gravity
ST	semi-trapez
TDC	top dead center
TRA	total range adjustable
U.S. oz	ounce (United States)
V	volt
Vac	volt (alternative current)

This *Shop Manual* uses technical terms which may be slightly different from the ones in the parts catalog.

TYPICAL PAGE



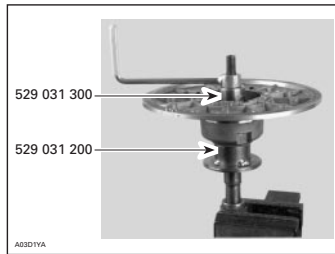
▼ CAUTION
 Pay attention to torque specifications. Some of these are in lbf·in instead of lbf·ft. Use appropriate torque wrench.

INTRODUCTION

TYPICAL PAGE

Section 05 TRANSMISSION Subsection 03 (DRIVEN PULLEY)

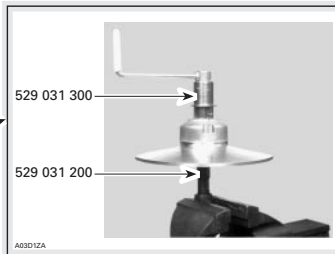
Turn puller handle and sliding half at once to extract the bushing.



IMPORTANT: Large bushing retaining screws and washers must be removed before small bushing installation.

Coat bushing outside diameter with Loctite 609 (P/N 413 703 100).

Install bushing as following photo.



ASSEMBLY

Came Slider Shoe

When replacing slider shoes no. 4, always install a new set (3 shoes) to maintain equal pressure on the cam.

Assemble driven pulley components by reversing the disassembly procedure.

Cam

Coat cam **no. 18** interior with anti-seize lubricant.

INSTALLATION

Countershaft

CAUTION

Always apply anti-seize lubricant (P/N 413 701 000) on the countershaft before final pulley installation.

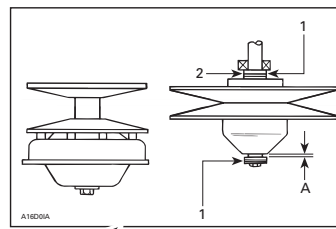
F-Series and S-Series Only

Should installation procedure be required, refer to BRAKE 05-05 then look for **Brake Disc and Countershaft Bearing Adjustment**.

Reinstall the pulley on the countershaft by reversing the removal procedure.

All Models

Check end play of driven pulley on countershaft by pushing pulley towards outer housing so that the inner shims (P/N 504 108 200) contact it. Measure end play at the mounting screw end between shim(s) and pulley. See illustration.



TYPICAL — TOP VIEW

1. Shim (P/N 504 108 200) (as required)

2. Contact

3. 0 to 1 mm (0 to 3/64 in)

Torque retaining screw no. 13 to 25 N•m (18 lbf•ft).

ADJUSTMENT

Refer to **PULLEY DISTANCE AND ALIGNMENT 05-04** to adjust pulley distance. Adjust drive belt height between pulley halves to obtain specified belt deflection.

Title indicates main procedure to be carried-out.

Italic bold face type setting indicates a particular procedure concerning a model.

Italic bold face setting in this case indicates that particular procedure for F and S-Series is finished, so from this point, all models are concerned.

"TYPICAL" caption indicates a general view which does not represent full detail. "TOP VIEW" caption helps you in understanding illustration.

Call-outs for above illustration.

Reference to look up a certain section and subsection. In this case it concerns pulleys adjustment.

Illustration always follows text to which it pertains.

Subtitle indicates a particular procedure for the named part.

Bold face number following part name refers to exploded view at beginning of subsection.

GENERAL INFORMATION

The information and component/system descriptions contained in this manual are correct at time of publication. Bombardier Inc. however, maintains a policy of continuous improvement of its products without imposing upon itself any obligation to install them on products previously manufactured.

Due to late changes, it may have some differences between the manufactured product and the description and/or specifications in this document.

Bombardier Inc. reserves the right at any time to discontinue or change specifications, designs, features, models or equipment without incurring obligation.

USEFUL PUBLICATIONS

Refer to *Parts Catalogs* to order the right parts.

PARTS CATALOG	
MODELS	P/N
MX Z 500 MX Z 670 HO	484 400 004
MX Z 670 HO T.H.	484 400 042
MX Z 440	484 400 000
FORMULA DELUXE 500 LC FORMULA DELUXE 583 FORMULA DELUXE 670	484 400 001
FORMULA Z 500 FORMULA Z 583 FORMULA Z 670	484 400 002
SUMMIT 500 SUMMIT 670	484 400 006
GRAND TOURING 500 GRAND TOURING 583	484 400 003
SKANDIC WT SKANDIC SWT SKANDIC WT LC	484 400 002

Use *Specification Booklet* to find rapidly the right specs.

1995-1999 SPECIFICATION BOOKLET (P/N 484 300 002).

ILLUSTRATIONS AND PROCEDURES

Illustrations and photos show the typical construction of the different assemblies and, in all cases, may not reproduce the full detail or exact shape of the parts shown. However, they represent parts which have the same or a similar function.

▼ CAUTION

Most components of those vehicles are built with parts dimensioned in the metric system. Most fasteners are metric and must not be replaced by customary fasteners or vice versa. Mismatched or incorrect fasteners could cause damage to the vehicle or possible personal injury.

As many of the procedures in this manual are interrelated, we suggest, that before undertaking any task, you read and thoroughly understand the entire section or subsection in which the procedure is contained.

A number of procedures throughout the book require the use of special tools. Before commencing any procedure, be sure that you have on hand all the tools required, or approved equivalents.

INTRODUCTION

The use of RIGHT and LEFT indications in the text, always refers to driving position (when sitting on vehicle).



A03A0CA

- TYPICAL*
1. *Left*
 2. *Right*

TIGHTENING TORQUES

Tighten fasteners to torque mentioned in exploded views and text. When they are not specified refer to following table. All torques apply to 8.8 grade fasteners. Bold face size (e.g. **M4**) indicates nominal value (mean value).

N•m	FASTENER SIZE (8.8 GRADE)	Lbf•in
2	M4	18
3	M4	27
4	M5	35
8	M6	71
9	M6	80
10	M6	89
11	M6	97
12	M6	106

N•m	FASTENER SIZE (8.8 GRADE)	Lbf•ft
21	M8	15
22	M8	16
23	M8	17
24	M8	18
25	M8	18
43	M10	32
44	M10	32
45	M10	33
46	M10	34
47	M10	35
48	M10	35
49	M10	36
50	M10	37
51	M10	38
52	M10	38
53	M10	39
76	M12	56
77	M12	57
78	M12	58
79	M12	58
80	M12	59
81	M12	60
82	M12	60
83	M12	61
84	M12	62
121	M14	89
122	M14	90

N•m	FASTENER SIZE (8.8 GRADE)	Lbf•ft
123	M14	91
124	M14	91
125	M14	92
126	M14	93
127	M14	94
128	M14	94
129	M14	95
130	M14	96
131	M14	97
132	M14	97
133	M14	98
134	M14	99
135	M14	100
136	M14	100
137	M14	101
138	M14	102
139	M14	103
140	M14	103
141	M14	104
142	M14	105
143	M14	105
144	M14	106
145	M14	107
146	M14	108
147	M14	108
148	M14	109
149	M14	110
150	M14	111

TIGHTENING TORQUES FOR 8.8 GRADE BOLTS AND NUTS

We would be pleased if you could communicate to Bombardier any suggestions you may have concerning our publications.

Bombardier SERVICE PUBLICATIONS REPORT

Publication title and year _____ Page _____

Machine _____ Report of error Suggestion

Name _____

Address _____

City and State/Prov. _____ Date _____

Zip code/Postal code _____

Bombardier SERVICE PUBLICATIONS REPORT

Publication title and year _____ Page _____

Machine _____ Report of error Suggestion

Name _____

Address _____

City and State/Prov. _____ Date _____

Zip code/Postal code _____

Bombardier SERVICE PUBLICATIONS REPORT

Publication title and year _____ Page _____

Machine _____ Report of error Suggestion

Name _____

Address _____

City and State/Prov. _____ Date _____

Zip code/Postal code _____



AFFIX
PROPER
POSTAGE



BOMBARDIER
RECREATIONAL PRODUCTS

Technical Publications
After Sales Service
565 de la Montagne Street
Valcourt, Quebec, Canada J0E 2L0

AFFIX
PROPER
POSTAGE



BOMBARDIER
RECREATIONAL PRODUCTS

Technical Publications
After Sales Service
565 de la Montagne Street
Valcourt, Quebec, Canada J0E 2L0

AFFIX
PROPER
POSTAGE



BOMBARDIER
RECREATIONAL PRODUCTS

Technical Publications
After Sales Service
565 de la Montagne Street
Valcourt, Quebec, Canada J0E 2L0