

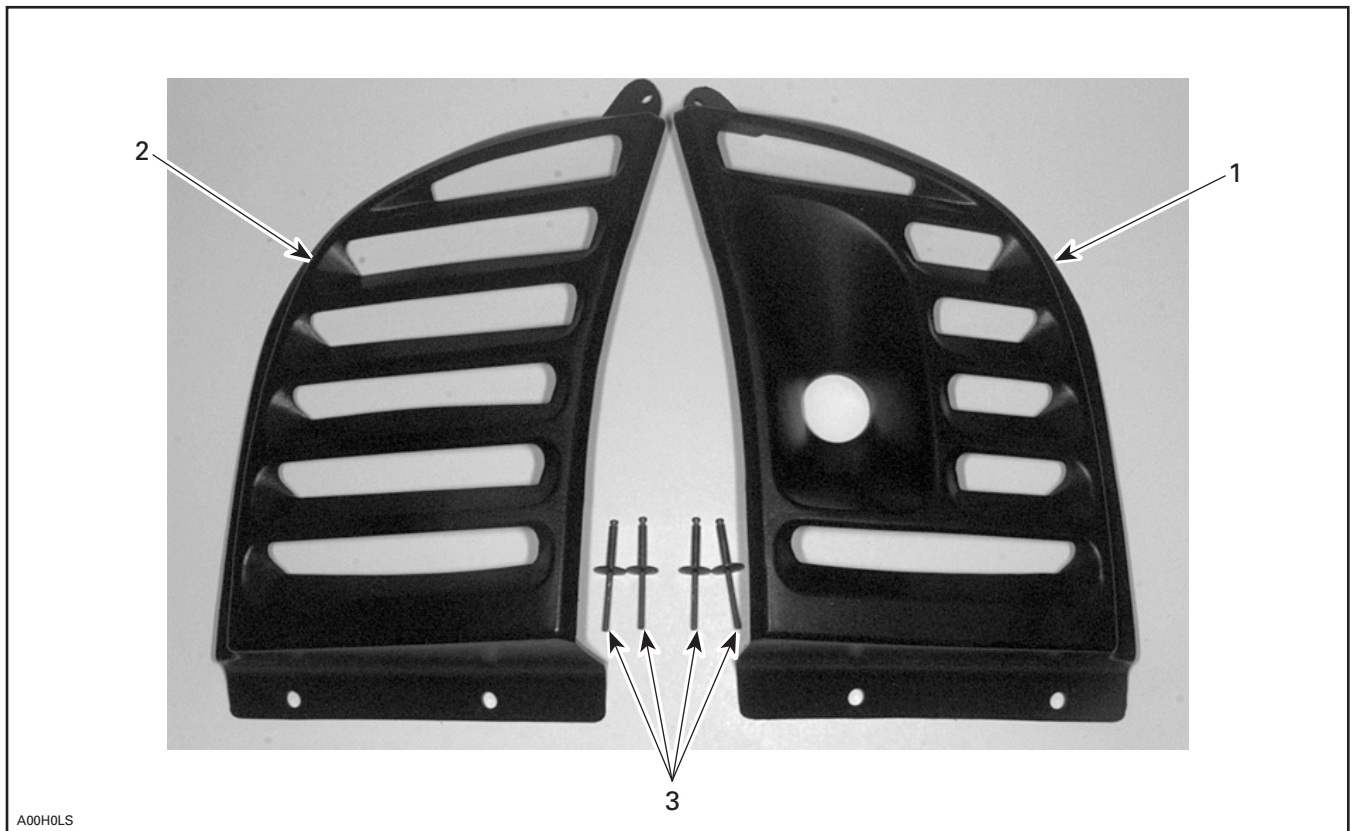


◆ **WARNING**

For safety reasons, this kit must be installed by an authorized Bombardier snowmobile dealer. Should removal of a locking device be required when undergoing disassembly/assembly, always replace with a new one. This instruction sheet should be given to the purchaser. This kit is designed for specific applicable models only. It is not recommended for vehicles other than those for which it was sold.

NOTE: Installation time is approximately 1.0 hour.

PARTS TO BE INSTALLED



- 1. Console (Right Side)
- 2. Console (Left Side)
- 3. Rivet (4)

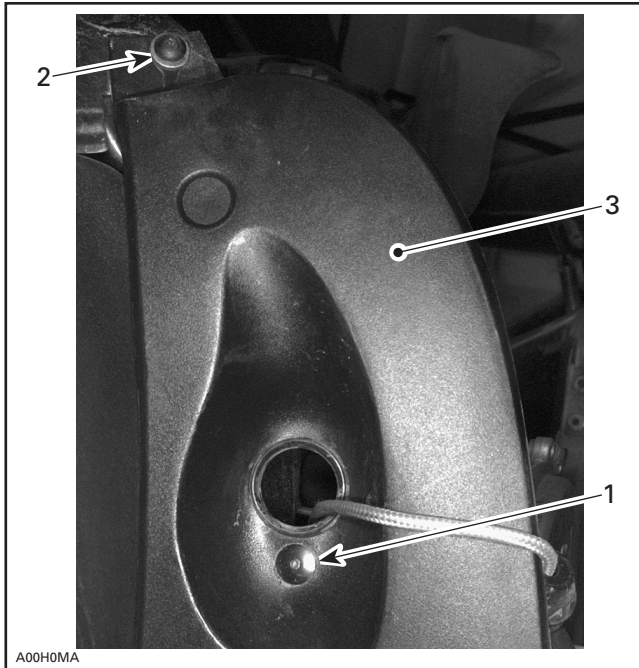
PROCEDURE

Open hood.

Right Side Installation

Remove rewind starter handle, making sure to secure the rope with a hose pincher so it won't unwind.

Remove handle console by drilling out rivet in handle housing and by removing existing upper self-tapping screw and flat washer. Keep screw and flat washer. Refer to following photo.



1. Drill out existing rivet
2. Remove self-tapping screw and flat washer
3. Handle console

Close hood.

Using supplied template for right side, mark cutting line.

Carefully follow the cutting line with a jigsaw.

Complete acoustic foam cutting using a razor knife.

After cutting, polish hood edge with a soft sand paper.

Open hood.

Install console **no. 1** by inserting upper tab in its position and secure with flat washer and self-tapping screw previously removed.

Using already existing console bottom holes as template mark the spots to be drilled in the snowmobile body.

NOTE: make sure to align console center hole with rewind handle hole by pushing console upward before marking drilling spots.

Drill two 5mm (3/16 in) holes and secure bottom of console with rivets **no. 3**.

Reinstall rewind starter handle and remove hose pincher blocking the rope.

Left Side Installation

Remove tool case and set it aside.

Close hood.

Using supplied template for left side, mark cutting line.

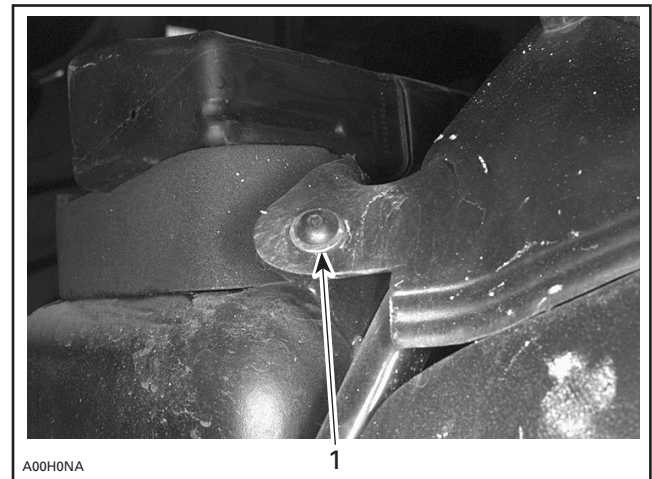
Carefully follow the cutting line with a jigsaw.

Complete acoustic foam cutting using a razor knife.

After cutting, polish hood edge with a soft sand paper.

Open hood.

Install console **no. 2** by inserting upper tab in its position after having removed existing self-tapping screw and flat washer; then secure with same self-tapping screw and flat washer.



1. Existing self-tapping screw and flat washer

Align bottom of console with other side.

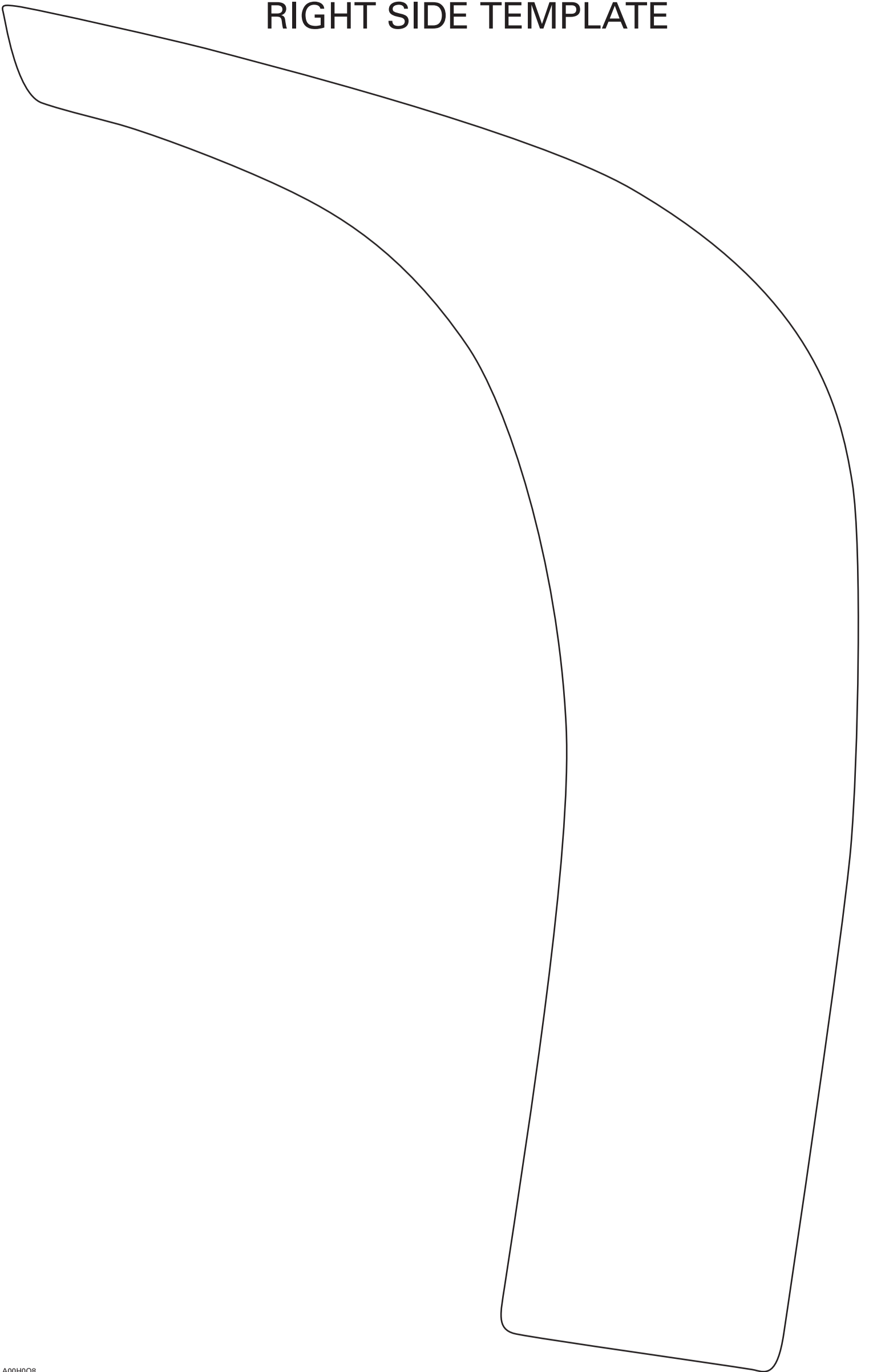
Using already existing console bottom holes as template mark the spots to be drilled in the snowmobile body.

Drill two 5mm (3/16 in) holes and secure bottom of console with rivets **no. 3**.

Reinstall tool case.

Close hood.

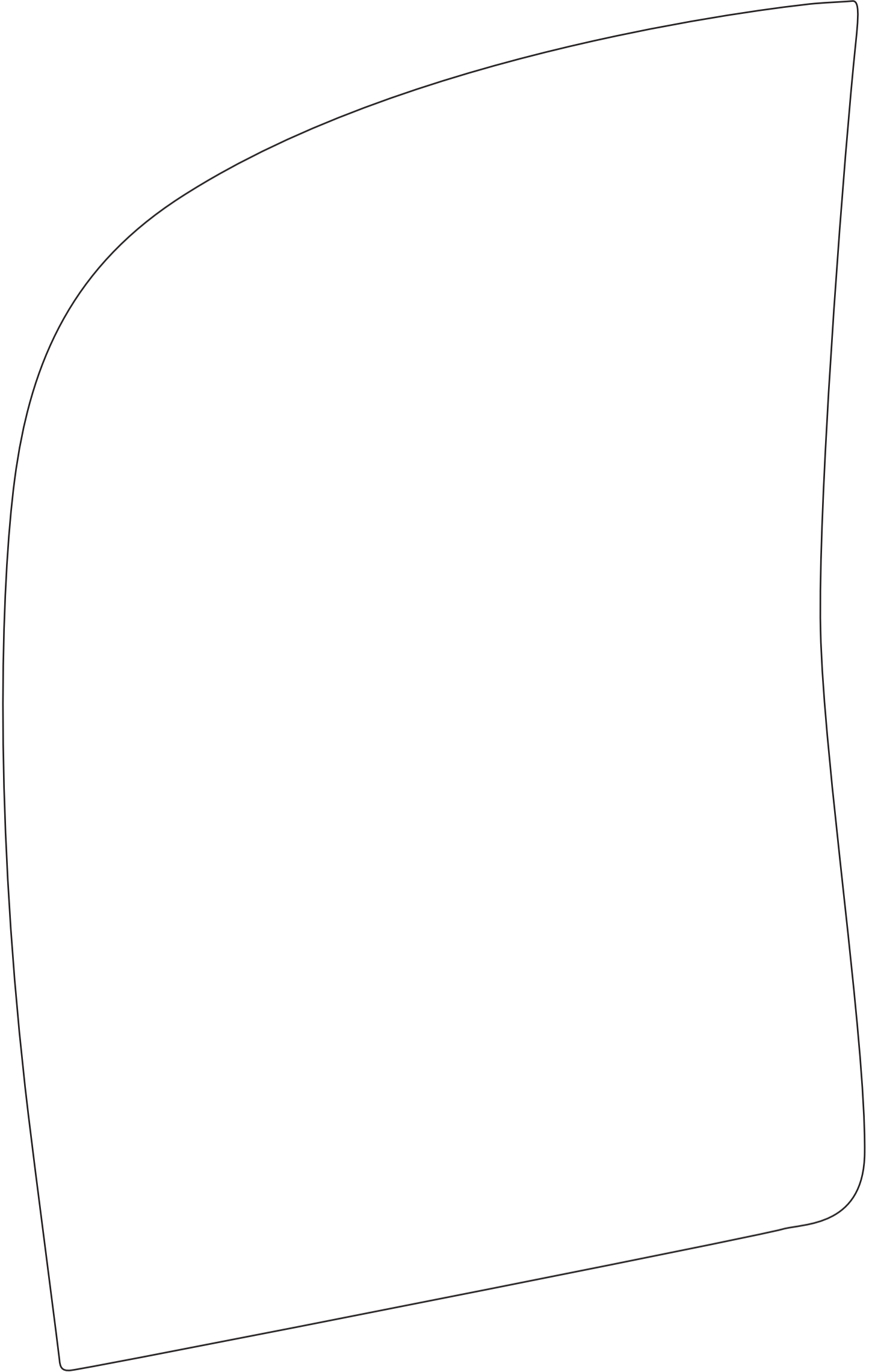
RIGHT SIDE TEMPLATE



A00H008

THIS PAGE IS PURPOSELY BLANK

LEFT SIDE TEMPLATE



A00H0P8

861 7659 00

1.	572 102 800	Console (Right Side)	Console (côté droit)
2.	572 103 000	Console (Left Side)	Console (côté gauche)
3.	390 409 600	Rivet (4)	Rivet (4)