



**FLAT RATE TIME  
SCHEDULE**

**SKI-DOO®  
SNOWMOBILE**

**1997**

***VOLUME III***

**FORMULA\* III / III LT**

**MACH\* I**

**MACH\* Z / Z LT**

**GRAND TOURING\* SE**

*Effective November 25th, 1996*

**Subject to review from time to time, without notice or delay.**

## SKI-DOO SNOWMOBILE 1997

MODEL NUMBER	VEHICLE	CHASSIS TYPE	ENGINE TYPE	STARTER TYPE
1148	FORMULA III CAN	DSA	599	M
1149	FORMULA III US	DSA	599	M
1150	FORMULA III EUR	DSA	599	M
1151	FORMULA III LT CAN	DSA	599	M
1152	FORMULA III LT US	DSA	599	M
1153	FORMULA III LT EUR	DSA	599	M
1177	MACH 1 CAN	DSA	699	M
1178	MACH 1 US	DSA	699	M
1179	MACH 1 EUR	DSA	699	M
1180	MACH Z CAN	DSA	809	M
1181	MACH Z US	DSA	809	M
1182	MACH Z EUR	DSA	809	M
1183	MACH Z LT CAN	DSA	809	M
1184	MACH Z LT US	DSA	809	M
1185	MACH Z LT EUR	DSA	809	M
1129	GRAND TOURING SE CAN	DSA	699	M/E
1130	GRAND TOURING SE US	DSA	699	M/E
1131	GRAND TOURING SE EUR	DSA	699	M/E

M = MANUAL START  
E = ELECTRIC START

# INTRODUCTION

This publication governs all warranty labor allowances for 1997 Bombardier Snowmobiles.

## 1. HOW DOES IT WORK

We follow the procedures detailed in the Bombardier Snowmobile Shop Manual. The flat rate time is the maximum time allowed for a repair involving any given part. **FLAT RATE TIME IS NOT CUMULATIVE.** You must use the flat rate time given for the longest lasting operation. For example, if you had to open the crankcase to change a piston, you must use the flat rate time applicable to the crankcase.

**NOTE:** The flat rate time schedule was prepared by skilled mechanics using the hand tool usually found in workshops and all the special tools mentioned in the Shop Manual.

## 2. COMPILATION

The flat rate time schedule is compiled as follows: the required time to perform the repair plus (+) 30% correction factor up to 3.0 hours and (+) 15% over 3.0 hours time with exceptions.

- vehicle handling
- obtaining the parts
- diagnosis
- cleaning
- special compensation (rusted bolts)

## 3. HOW TO USE IT

Refer to the system you need, locate part of series of parts replaced. List JOB CODE in the appropriate column on claim.

<b>SYSTEM NUMBER</b>	<b>PAGE</b>
01 Engine	1 / 2
02 Carburetor and oil injection system	1 / 1
03 Ignition	1 / 1
04 Starter	1 / 1
05 Transmission	1 / 1
06 Brake	1 / 1
07 Steering/controls and front suspension	1 / 2
08 Rear suspension and track	1 / 2
09 Body	1 / 2
10 Electrical system	1 / 1
11 Claim type 02 use only	1 / 1

**NOTE:** Unless otherwise specified, dismantling order is: top to bottom, exterior to interior, front to rear.

All fractions of hours are in tenths:

- 0.1 = 6 minutes
- 0.2 = 12 minutes, and so on

## 4. JOB REQUIREMENTS

All the flat rate times mentioned in the following pages include the required operations such as: engine timing (rotary valve and ignition), connecting rod(s) alignment, cylinder head(s) torque or use of parallel bar, use of ignition tester, piston clearance / ring end gap measurement, crankshaft to crankcase measurement, cylinder honing, pulley alignment, track tension and alignment, ski alignment, headlamp beam adjustment, engine leak test.

## 5. ILLUSTRATIONS

The illustrations contained in this manual do not necessarily show every components of a given system as parts catalog do. Their purpose is to facilitate recognition of parts related to a flat rate time. **Item numbers on illustrations correspond to the four digit Job Code.**

## 6. WARRANTY INFORMATION

WARRANTY PARTS TO RETURN

P/N AVAILABLE FOR WARRANTY CLAIMING PURPOSES

## SUGGESTION (FORM REQUEST)

**SYSTEM 01**  
*Engine*

# SYSTEM 01 : Engine

ALWAYS USE THE *LONGEST* FLAT RATE TIME  
APPLICABLE TO THE REPAIR PERFORMED.

**JOB CODE  
TO INSERT ON CLAIM**



	JOB DESCRIPTION	1148	1177	1180	1129
		1149	1178	1181	1130
		1150	1179	1182	1131
		1151		1183	
		1152		1184	
		1153		1185	
		Formula III / III LT	Mach I	Mach Z / Z LT	G.T. SE
<b>01 00</b>	<b>NO LABOUR INVOLVED</b>	<b>N.A.</b>	<b>N.A.</b>	<b>N.A.</b>	<b>N.A.</b>
<b>*01 01</b>	<b>REMOVE &amp; REPLACE ENGINE ASS'Y</b>	<b>3,5</b>	<b>3,5</b>	<b>3,5</b>	<b>3,5</b>
01 12	CYLINDER HEAD COVER AND/OR GASKET	0,8	0,8	0,8	0,8
01 13	CYLINDER HEAD AND/OR GASKET (ONE)	0,8	0,8	0,8	0,8
01 17	CYLINDERS AND/OR GASKETS (ALL)	2,5	2,5	2,5	2,5
<b>***</b>	<b>CYLINDER RESLEEVE</b>	<b>-</b>	<b>-</b>	<b>-</b>	<b>-</b>
01 18	COOLANT TEMPERATURE SENDER	0,3	0,3	0,3	0,3
01 19	THERMOSTAT	0,3	0,3	0,3	0,3
01 20	WATER OUTLET SOCKET	0,3	0,3	0,3	0,3
01 21	COOLANT HOSE T-FITTING (ONE OR TWO)	0,3	0,3	0,3	0,3
01 22	RAVE ADJUST SCREW A/O COVER A/O SPRING	0,6	0,6	0,6	0,6
01 23	RAVE BELLOWS AND VALVE	0,6	0,6	0,6	0,6
01 24	RAVE VALVE ROD, HOUSING, GASKET	0,7	0,7	0,7	0,7
01 25	PISTON, NEEDLE BEARING (MAG OR CENTER)	2,5	2,5	2,5	2,5
01 26	PISTON, NEEDLE BEARING (PTO)	2,5	2,5	2,5	2,5
01 27	PISTONS, NEEDLE BRNGS (MAG + PTO + CNTR)	3,2	3,2	3,2	3,2
01 41	WATER PUMP IMPEL. A/OR COVER A/OR GASKET	1,3	1,3	1,3	1,3
01 44	ENGINE RUBBER MOUNTS (3 OR 4)	0,8	0,8	0,8	0,8
01 45	ENGINE RUBBER MOUNTS SUPPORT (3 OR 4)	0,8	0,8	0,8	0,8
01 47	ENGINE SUPPORT	1,7	1,7	1,7	1,7
01 48	CRANKCASE REPLACE	7,3	7,3	7,3	7,3
01 49	CRANKCASE RESEAL AND/OR GASKETS	7,3	7,3	7,3	7,3
01 50	CRANKSHAFT AND/OR BEARINGS	7,6	7,6	7,6	7,6
<b>***</b>	<b>CRANKSHAFT REBUILT</b>	<b>-</b>	<b>-</b>	<b>-</b>	<b>-</b>
01 72	TUNED PIPE	0,3	0,3	0,3	0,3
01 73	EXHAUST SOCKET AND/OR CONNECTING TUBE	0,5	0,5	0,5	0,5
01 75	MUFFLER AND/OR EXHST GROMMET AND/OR SUPP	0,3	0,3	0,3	0,3
01 76	ENGINE SUPPORT, (FRONT OR REAR LH)	0,7	0,7	0,7	0,7
01 77	ENGINE RUBBER MOUNTS (1 OR 2)	0,6	0,6	0,6	0,6
01 78	COOLANT HOSE (UNDER ENGINE)	0,6	0,6	0,6	0,6
01 79	COOLANT HOSE(TANK TO HEAD)	0,4	0,4	0,4	0,4
01 80	REED VLV/GASKET/FLANGE/SOCKETC. (1)	0,4	0,4	0,4	0,4

\* REQUIRES PRIOR AUTHORIZATION BY DISTRIBUTOR.

\*\* INDICATE LABOUR TIME ON LINE "LABOUR ONLY" OF CLAIM.

\*\*\* INDICATE \$\$\$ AMOUNT ON "SUB-CONTRACTED LABOUR" OF CLAIM.

**SYSTEM 01**

# SYSTEM 01 : Engine

ALWAYS USE THE *LONGEST* FLAT RATE TIME  
APPLICABLE TO THE REPAIR PERFORMED.

**JOB CODE  
TO INSERT ON CLAIM**



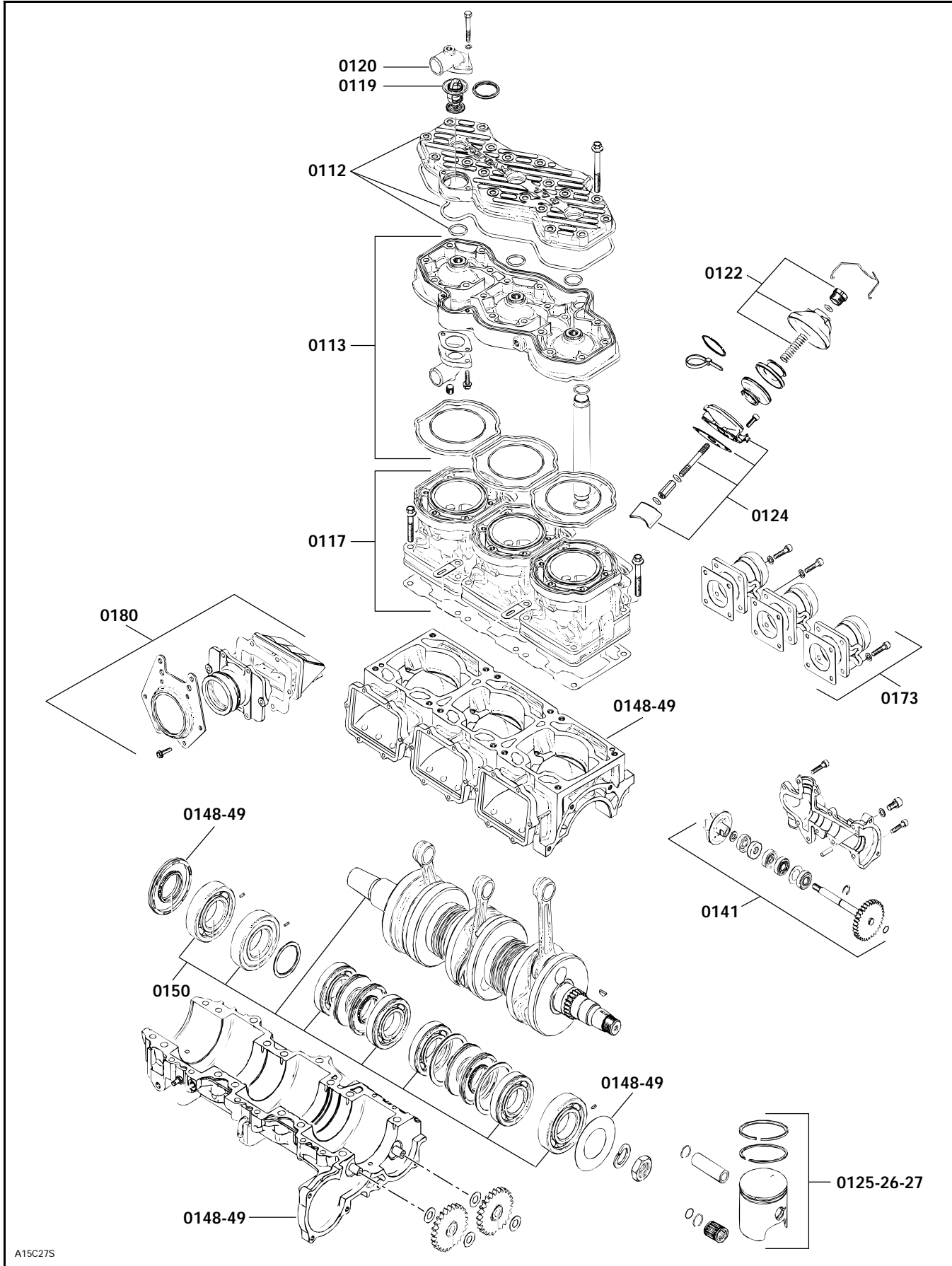
	JOB DESCRIPTION				
		Formula	Mach	Mach	G.T.
		III / III LT	I	Z / Z LT	SE
01 81	REED VLV/GASKET/FLANGE/SOCKET C.(2 OR 3)	0,5	0,5	0,5	0,5
01 84	TUNE PIPE SHIELD (1)	0,4	0,4	0,4	0,4
01 85	TUNE PIPE SHIELD (2)	0,8	0,8	0,8	0,8
01 86	TUNE PIPE SHIELD (3)	1,2	1,2	1,2	1,2

\* REQUIRES PRIOR AUTHORIZATION BY DISTRIBUTOR.

\*\* INDICATE LABOUR TIME ON LINE "LABOUR ONLY" OF CLAIM.

\*\*\* INDICATE \$\$\$ AMOUNT ON "SUB-CONTRACTED LABOUR" OF CLAIM.

**SYSTEM 01**



# **SYSTEM 02**

## ***Carburetor and Oil Injection System***



## SYSTEM 02 : Carburetor and Oil Injection System

ALWAYS USE THE *LONGEST* FLAT RATE TIME  
APPLICABLE TO THE REPAIR PERFORMED.

**JOB CODE  
TO INSERT ON CLAIM**



	JOB DESCRIPTION				
		Formula III / III LT	Mach I	Mach Z / Z LT	G.T. SE
		1148	1177	1180	1129
		1149	1178	1181	1130
		1150	1179	1182	1131
		1151		1183	
		1152		1184	
		1153		1185	
<b>02 00</b>	<b>NO LABOUR INVOLVED</b>	<b>N.A.</b>	<b>N.A.</b>	<b>N.A.</b>	<b>N.A.</b>
02 01	AIR SILENCER ASS'Y ANY/OR ALL PARTS	0,3	0,3	0,3	0,3
02 02	CARBURETOR ASS'Y (ONE)	0,4	0,4	0,4	0,4
02 03	CARBURETORS ASS'Y (TWO OR THREE)	0,5	0,5	0,5	0,5
02 04	RUBBER FLANGE (ONE)	0,3	0,3	0,3	0,3
02 05	RUBBER FLANGES (TWO)	0,4	0,4	0,4	0,4
02 06	THROTTLE CABLE AND HOUSING	0,3	0,3	0,3	0,3
02 08	OIL INJECTION PUMP	1,4	1,4	1,4	1,4
02 09	OIL INJECTION RESERVOIR	0,4	0,4	0,4	0,4
02 10	FUEL PUMP	0,3	0,3	0,3	0,3
02 11	FLOAT SYSTEM ANY/OR ALL PARTS (ONE CARB)	0,7	0,7	0,7	0,7
02 12	FLOAT SYSTEM ANY/OR ALL PARTS (TWO CARB)	0,9	0,9	0,9	0,9
02 13	JET NEEDLE, THROTTLE SLIDE (ONE)	0,4	0,4	0,4	0,4
02 14	JET NEEDLES, THROTTLES SLIDES (TWO)	0,7	0,7	0,7	0,7
**	<b>CARBURETOR CLEANING AND REBUILDING (ONE)</b>	<b>1,0</b>	<b>1,0</b>	<b>1,0</b>	<b>1,0</b>
**	<b>CARBURETORS CLEANING AND REBUILDING (TWO)</b>	<b>1,4</b>	<b>1,4</b>	<b>1,4</b>	<b>1,4</b>
02 17	MAIN JET, NEEDLE JET, PILOT JET (ONE)	0,4	0,4	0,4	0,4
02 18	MAIN JETS, NEEDLE JETS, PILOT JETS (TWO)	0,7	0,7	0,7	0,7
02 24	OIL INJECTION FILTER	0,3	0,3	0,3	0,3
02 25	OIL INJECTION LINE (ONE)	0,3	0,3	0,3	0,3
02 26	OIL INJECTION LINES (TWO)	0,4	0,4	0,4	0,4
02 27	OIL LEVEL SENSOR	0,5	0,5	0,5	0,5
02 32	RUBBER FLANGES (3)	0,4	0,4	0,4	0,4
02 33	FLOAT SYSTEM ANY OR ALL PARTS (3 CARBS)	1,0	1,0	1,0	1,0
02 34	JET NEEDLES THROTTLE SLIDES ( 3 CARBS)	1,0	1,0	1,0	1,0
**	<b>CARBURETORS CLEANING AND REBUILDING (THREE)</b>	<b>1,8</b>	<b>1,8</b>	<b>1,8</b>	<b>1,8</b>
02 36	MAIN,NEEDLE OR PILOT JETS (3 CARBS)	1,0	1,0	1,0	1,0
02 37	OIL INJECTION LINES ( 3 )	0,5	0,5	0,5	0,5
02 40	CHOKE CABLE	0,3	0,3	0,3	-

\* REQUIRES PRIOR AUTHORIZATION BY DISTRIBUTOR.

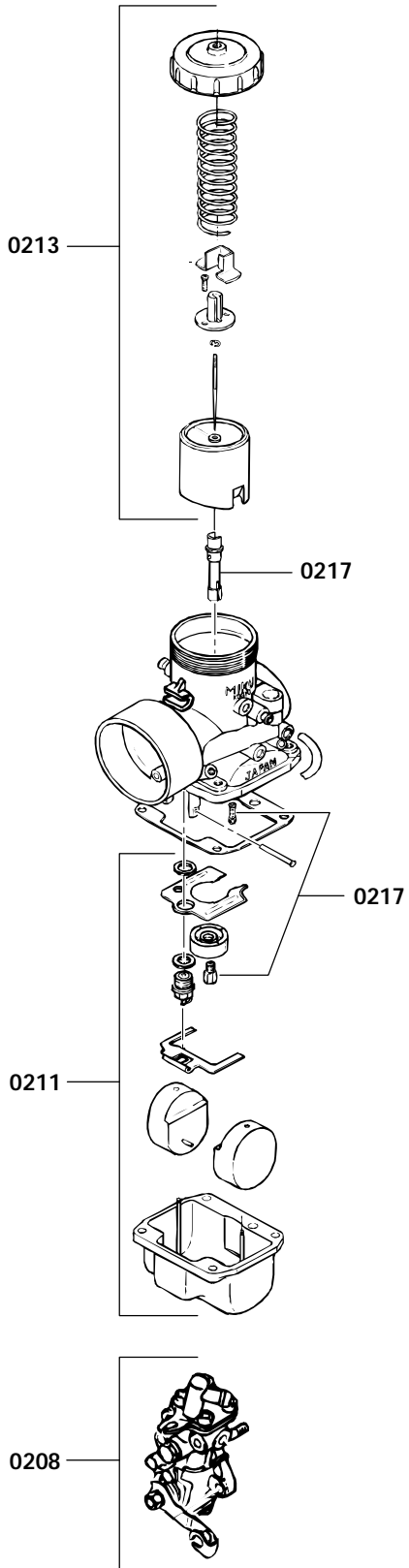
\*\* INDICATE LABOUR TIME ON LINE "LABOUR ONLY" OF CLAIM.

\*\*\* INDICATE \$\$\$ AMOUNT ON "SUB-CONTRACTED LABOUR" OF CLAIM.

**SYSTEM 02**

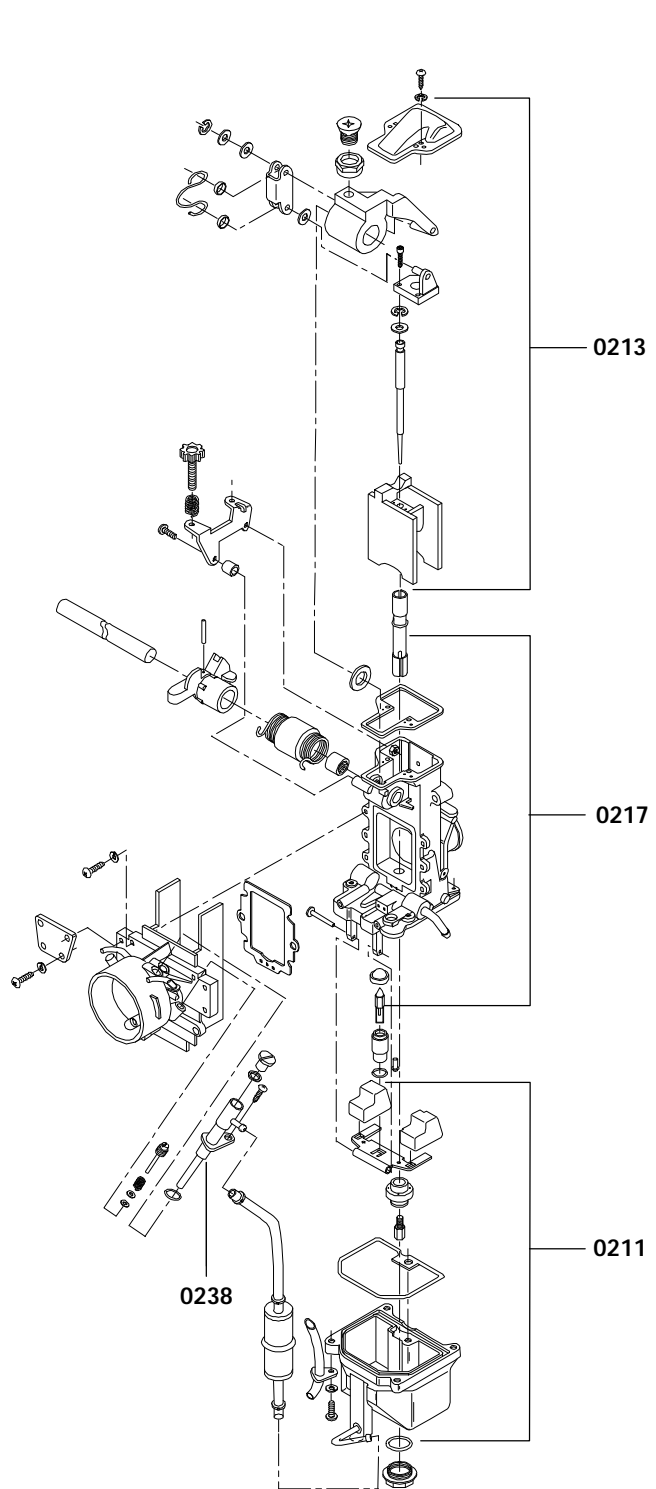
VM type  
(all models except Mach Z)

Type VM  
(tous les modèles à l'exception du Mach Z)



TM type  
(Mach Z only)

Type TM  
(Mach Z seulement)



**SYSTEM 03**  
*Ignition*

# SYSTEM 03 : Ignition

ALWAYS USE THE *LONGEST* FLAT RATE TIME  
APPLICABLE TO THE REPAIR PERFORMED.

**JOB CODE  
TO INSERT ON CLAIM**

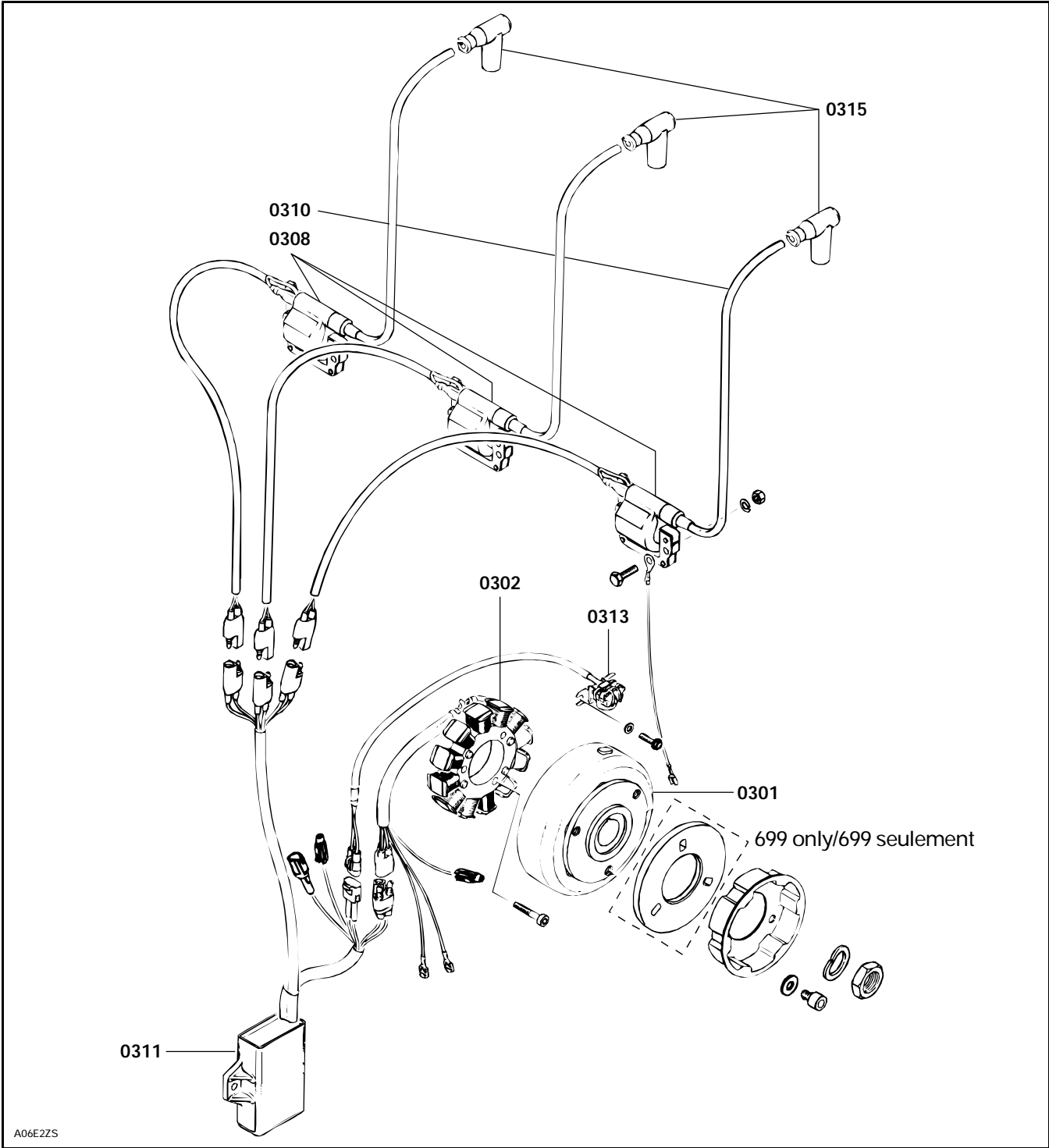


	JOB DESCRIPTION				
		1148	1177	1180	1129
		1149	1178	1181	1130
		1150	1179	1182	1131
		1151		1183	
		1152		1184	
		1153		1185	
		Formula III / III LT	Mach I	Mach Z / Z LT	G.T. SE
<b>03 00</b>	<b>NO LABOUR INVOLVED</b>	<b>N.A.</b>	<b>N.A.</b>	<b>N.A.</b>	<b>N.A.</b>
03 01	MAGNETO RING ASS'Y A/OR HOUSING FLYWHEEL	0,3	0,3	0,3	0,3
03 02	MAGNETO ASS'Y	0,5	0,5	0,5	0,5
03 08	IGNITION COIL	0,3	0,3	0,3	0,3
03 09	ARMATURE PLATE ALONE	1,3	1,3	1,3	1,3
03 10	IGNITION CABLE	0,3	0,3	0,3	0,3
03 11	ELECTRONIC BOX	0,3	0,3	0,3	0,3
<b>**</b>	<b>TIMING</b>	<b>0,4</b>	<b>0,4</b>	<b>0,4</b>	<b>0,4</b>
03 13	TRIGGER COIL (ONE)	0,7	0,7	0,7	0,7
03 15	SPARK PLUG PROTECTOR	0,1	0,1	0,1	0,1

\* REQUIRES PRIOR AUTHORIZATION BY DISTRIBUTOR.

\*\* INDICATE LABOUR TIME ON LINE "LABOUR ONLY" OF CLAIM.

\*\*\* INDICATE \$\$\$ AMOUNT ON "SUB-CONTRACTED LABOUR" OF CLAIM.



**SYSTEM 04**  
*Starter*

# SYSTEM 04 : Starter

ALWAYS USE THE *LONGEST* FLAT RATE TIME  
APPLICABLE TO THE REPAIR PERFORMED.

**JOB CODE  
TO INSERT ON CLAIM**

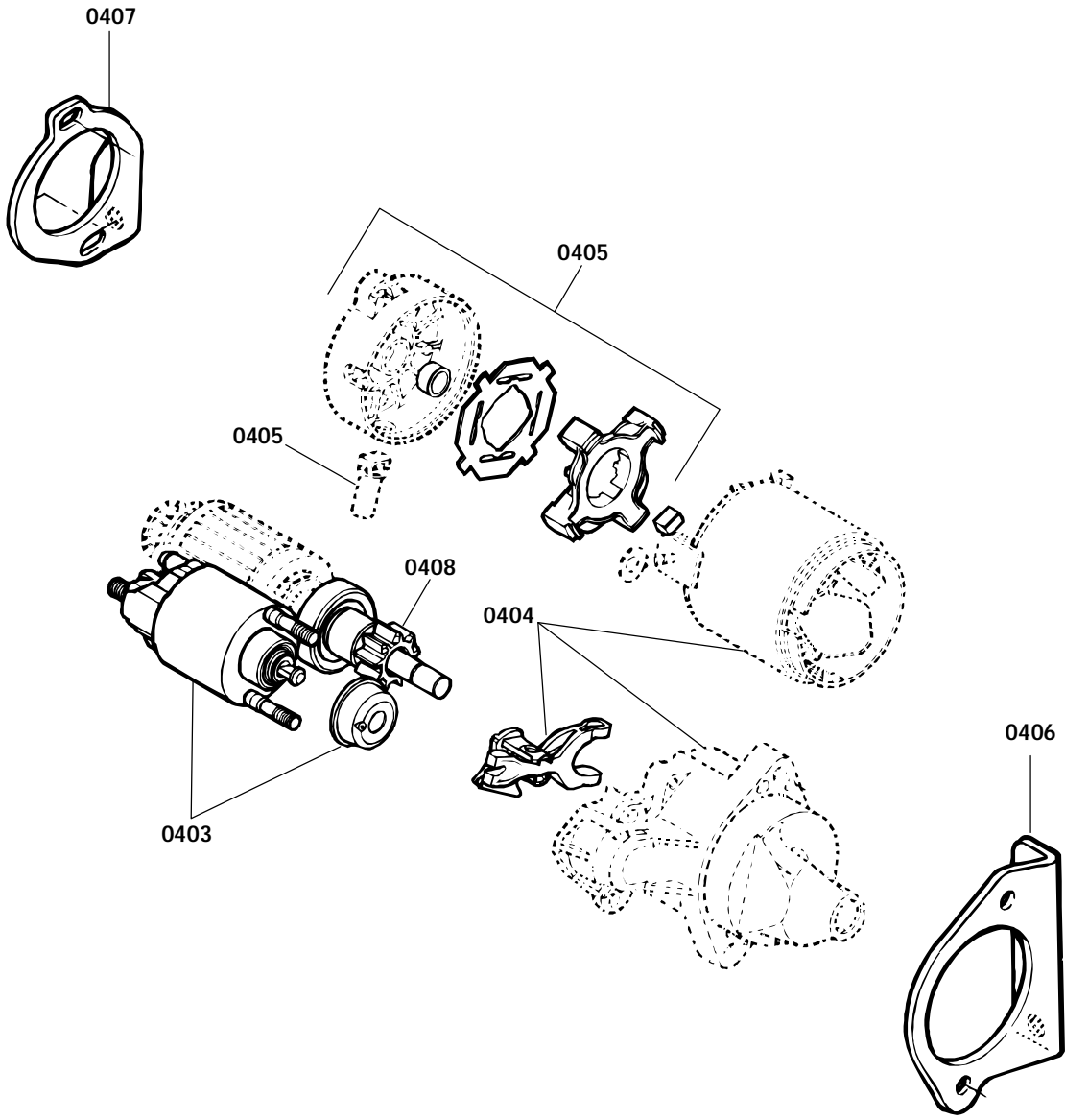


	JOB DESCRIPTION				
		1148	1177	1180	1129
		1149	1178	1181	1130
		1150	1179	1182	1131
		1151		1183	
		1152		1184	
		1153		1185	
		Formula III / III LT	Mach I	Mach Z / Z LT	G.T. SE
<b>04 00</b>	<b>NO LABOUR INVOLVED</b>	<b>N.A</b>	<b>N.A</b>	<b>N.A</b>	<b>N.A</b>
04 01	REWIND STARTER (ANY/OR ALL PARTS)EX HNDL	0,4	0,4	0,4	0,4
04 02	ELECTRIC STARTER ASS'Y	-	-	-	1,4
04 03	MAGNETIC SWITCH	-	-	-	1,4
04 04	LEVER, CLUTCH, YOKE, HOUSING, BUSHING	-	-	-	2,1
04 05	END FRAME,BUSHING BRSH,BRSH,PRSSURE BRUSH	-	-	-	2,1
04 06	STARTER BRACKET	-	-	-	1,4
04 07	STARTER SUPPORT	-	-	-	1,4
04 08	STARTER GEAR	-	-	-	1,8
04 09	REWIND STARTER HANDLE	0,3	0,3	0,3	0,3

\* REQUIRES PRIOR AUTHORIZATION BY DISTRIBUTOR.

\*\* INDICATE LABOUR TIME ON LINE "LABOUR ONLY" OF CLAIM.

\*\*\* INDICATE \$\$\$ AMOUNT ON "SUB-CONTRACTED LABOUR" OF CLAIM.





**SYSTEM 05**  
*Transmission*

# SYSTEM 05 : Transmission

ALWAYS USE THE *LONGEST* FLAT RATE TIME  
APPLICABLE TO THE REPAIR PERFORMED.

**JOB CODE  
TO INSERT ON CLAIM**



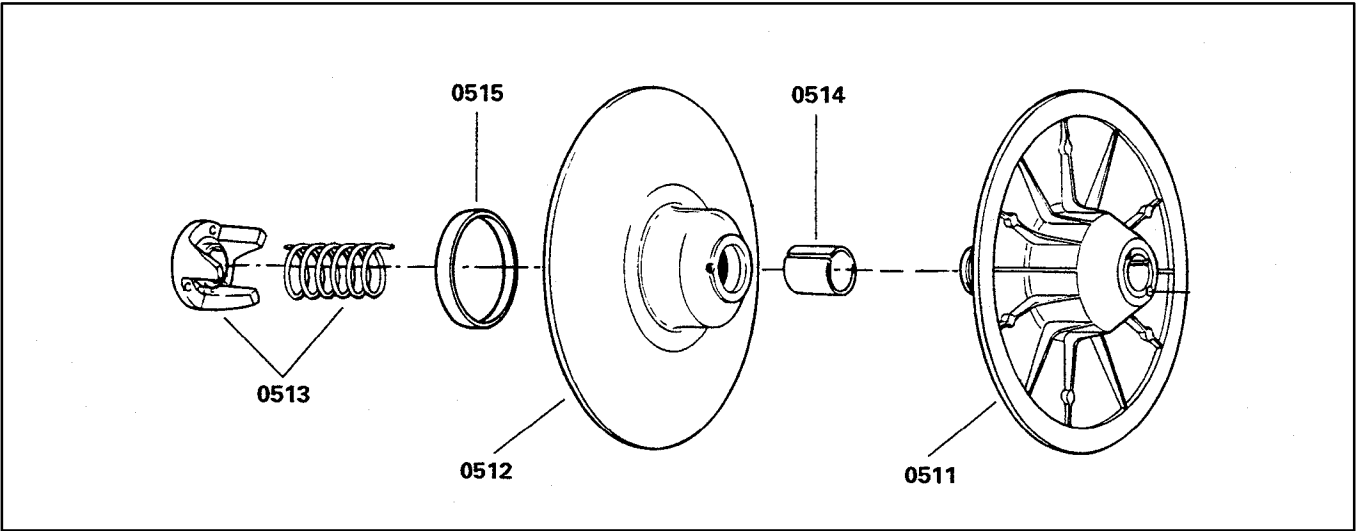
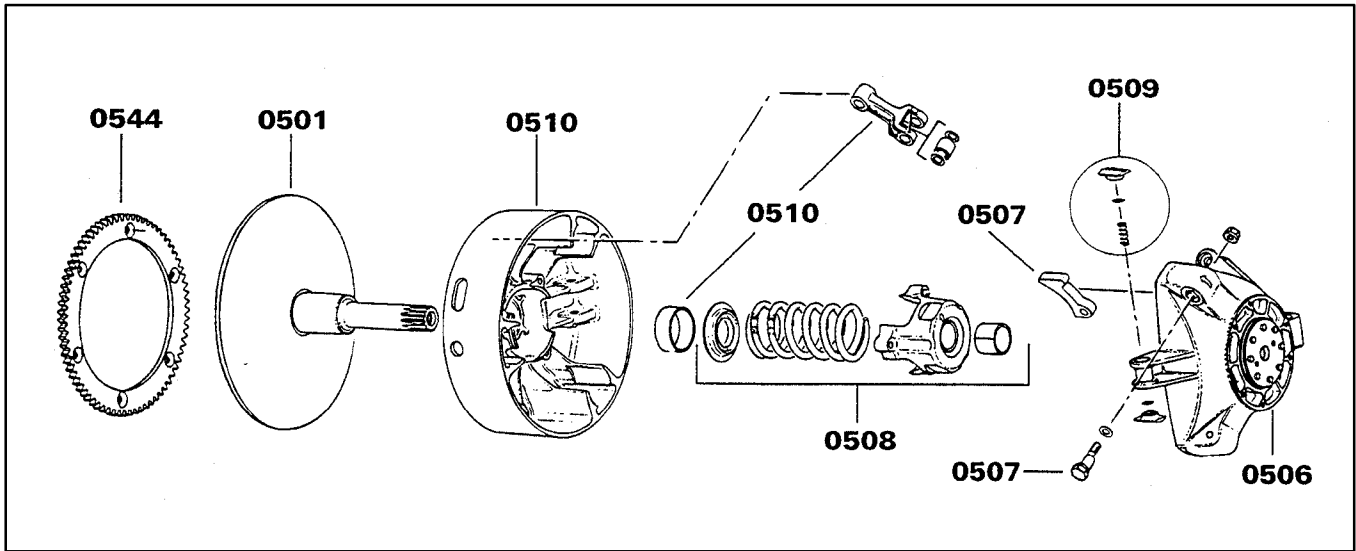
	JOB DESCRIPTION				
		Formula III / III LT	Mach I	Mach Z / Z LT	G.T. SE
1148			1177	1180	1129
1149			1178	1181	1130
1150			1179	1182	1131
1151				1183	
1152				1184	
1153				1185	
<b>05 00</b>	<b>NO LABOUR INVOLVED</b>	<b>N.A.</b>	<b>N.A.</b>	<b>N.A.</b>	<b>N.A.</b>
05 01	DRIVE PULLEY ASS'Y OR INNER HALF	0,3	0,3	0,3	0,3
05 06	TRA GOVERNOR CUP AND/OR FIXED HALF	0,3	0,3	0,3	0,3
05 07	TRA RAMPS AND/OR ADJUSTMENT SCREWS	0,3	0,3	0,3	0,3
05 08	TRA SPRING COVER, SPRING AND/OR BUSHING	0,7	0,7	0,7	0,7
05 09	TRA SLIDER SHOES AND/OR SPRING	0,3	0,3	0,3	0,3
05 10	TRA SLIDING HALF, BUSHING, LEVER ROLLERS	0,5	0,5	0,5	0,5
05 11	DRIVEN PULLEY FIXED HALF	0,3	0,3	0,3	0,3
05 12	DRIVEN PULLEY SLIDING HALF	0,3	0,3	0,3	0,3
05 13	DRIVEN PULLEY OUTER CAM AND/OR SPRING	0,3	0,3	0,3	0,3
05 14	DRIVEN PULLEY SMALL BUSHING	0,6	0,6	0,6	0,6
05 15	DRIVEN PULLEY LARGE BUSHING	0,6	0,6	0,6	0,6
05 17	COUNTERSHAFT, COLLAR BEARING OR FLANGE	0,4	0,4	0,4	0,4
05 18	COUNTERSHAFT	1,0	1,0	1,0	1,0
05 19	DRIVE BELT AND/OR GUARD	0,1	0,1	0,1	0,1
05 20	CHAINCASE UPPER SEAL AND/OR BEARING	1,2	1,2	1,2	1,4
05 21	CHAINCASE	1,8	1,8	1,8	2,1
05 22	CHAINCASE COVER	0,3	0,3	0,3	0,5
05 23	CHAINCASE UPPER, CENTRAL SPROCKET	0,5	0,5	0,5	0,8
05 24	CHAINCASE LOWER SPROCKET	0,4	0,4	0,4	0,9
05 25	CHAINCASE DRIVE CHAIN	0,4	0,4	0,4	0,9
05 26	CHAINCASE TENSIONERS	0,3	0,3	0,3	0,7
05 27	TENSIONER ADJUSTMENT SCREW	1,8	1,8	1,8	2,1
05 34	SLIDING SLEEVE, FORK AND/OR FORK SHAFT	-	-	-	0,5
05 39	SHIFT LEVER AND/OR SHIFT ROD	-	-	-	0,3
05 40	SHIFT ROD, BALL JOINT AND/OR SOCKET	-	-	-	0,3
05 44	RING GEAR OR DAMPER	0,4	0,4	0,4	0,4

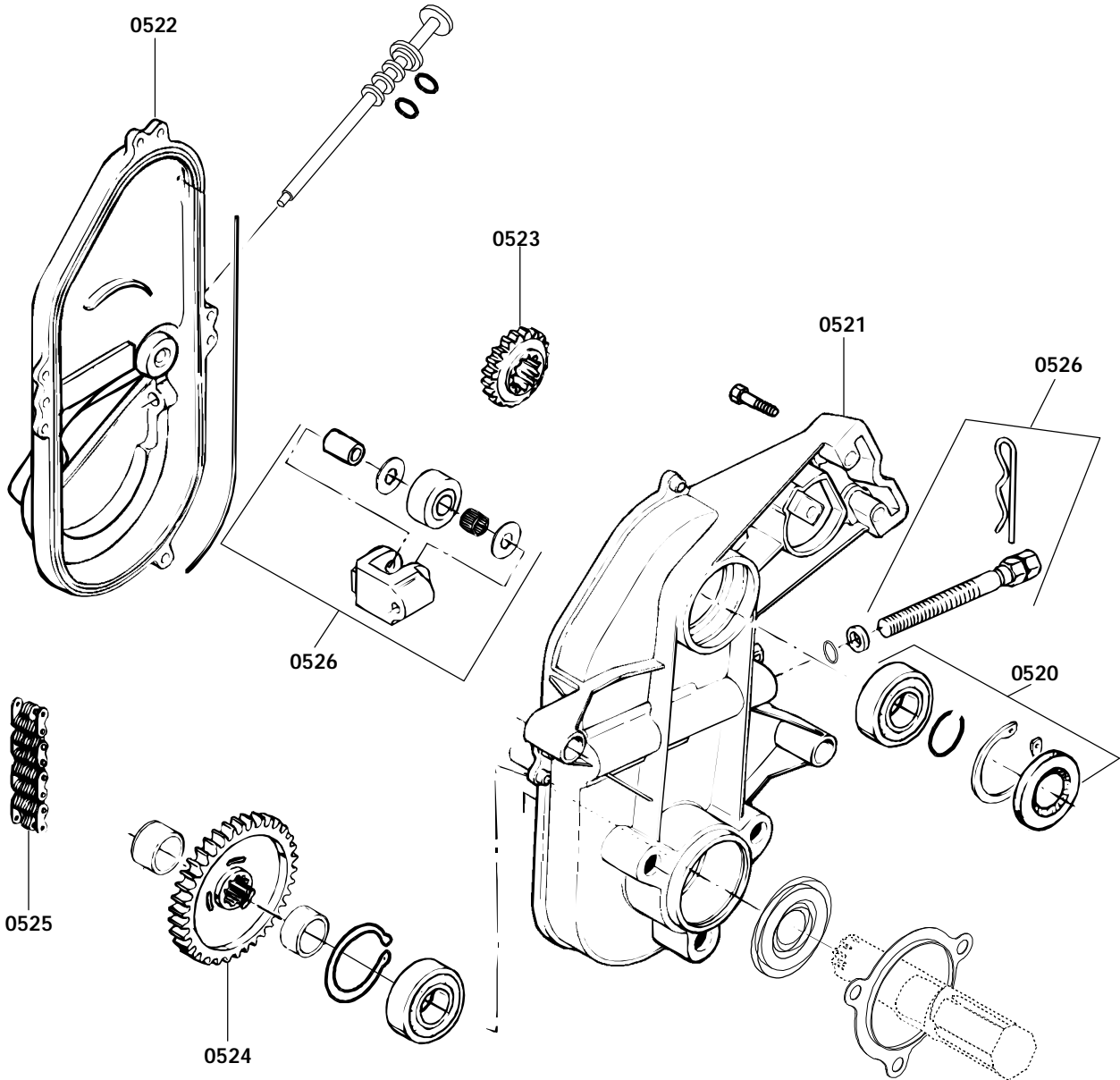
\* REQUIRES PRIOR AUTHORIZATION BY DISTRIBUTOR.

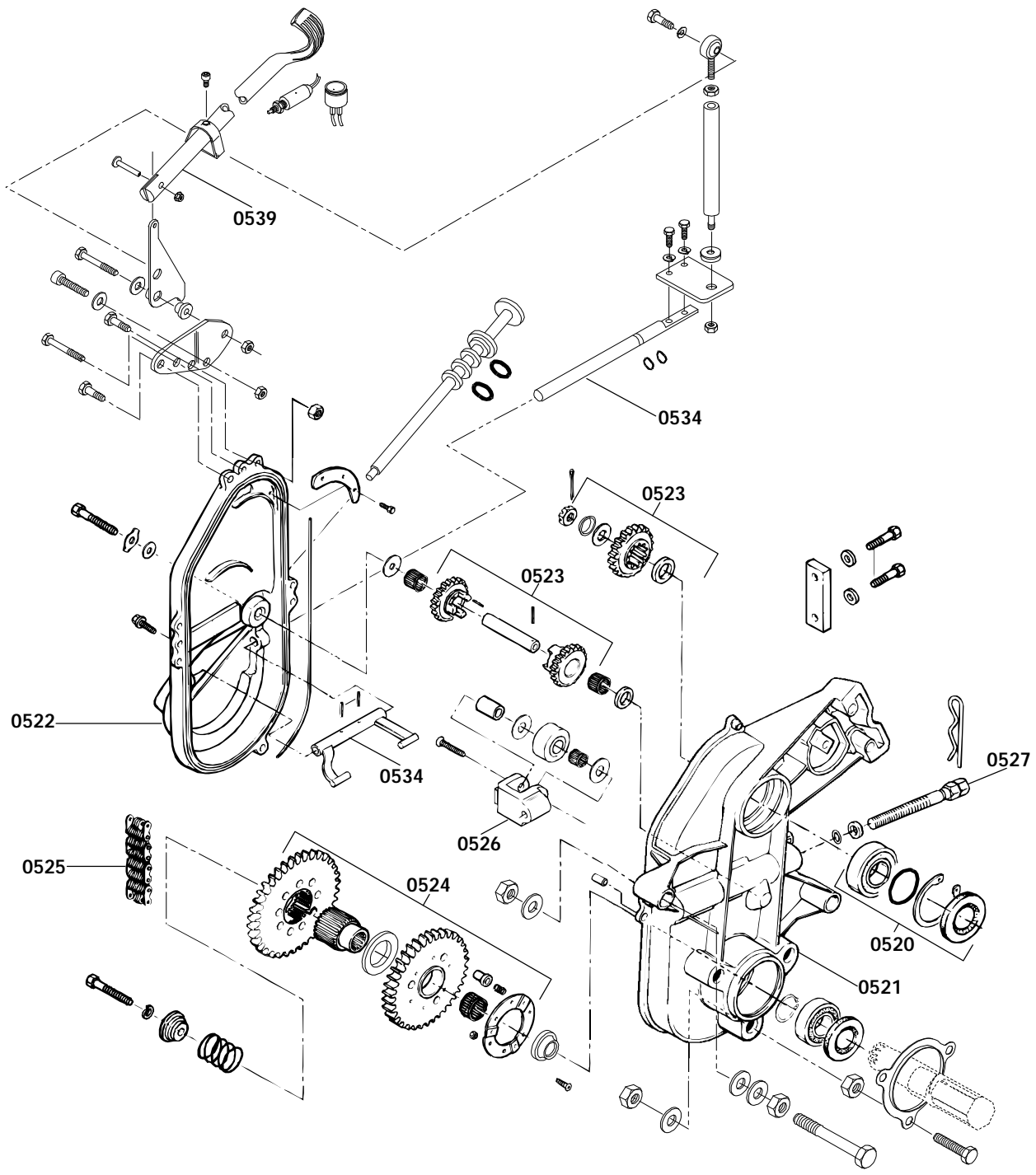
\*\* INDICATE LABOUR TIME ON LINE "LABOUR ONLY" OF CLAIM.

\*\*\* INDICATE \$\$\$ AMOUNT ON "SUB-CONTRACTED LABOUR" OF CLAIM.

**SYSTEM 05**







**SYSTEM 06**  
*Brake*

## SYSTEM 06 : Brake

ALWAYS USE THE *LONGEST* FLAT RATE TIME  
APPLICABLE TO THE REPAIR PERFORMED.

**JOB CODE  
TO INSERT ON CLAIM**



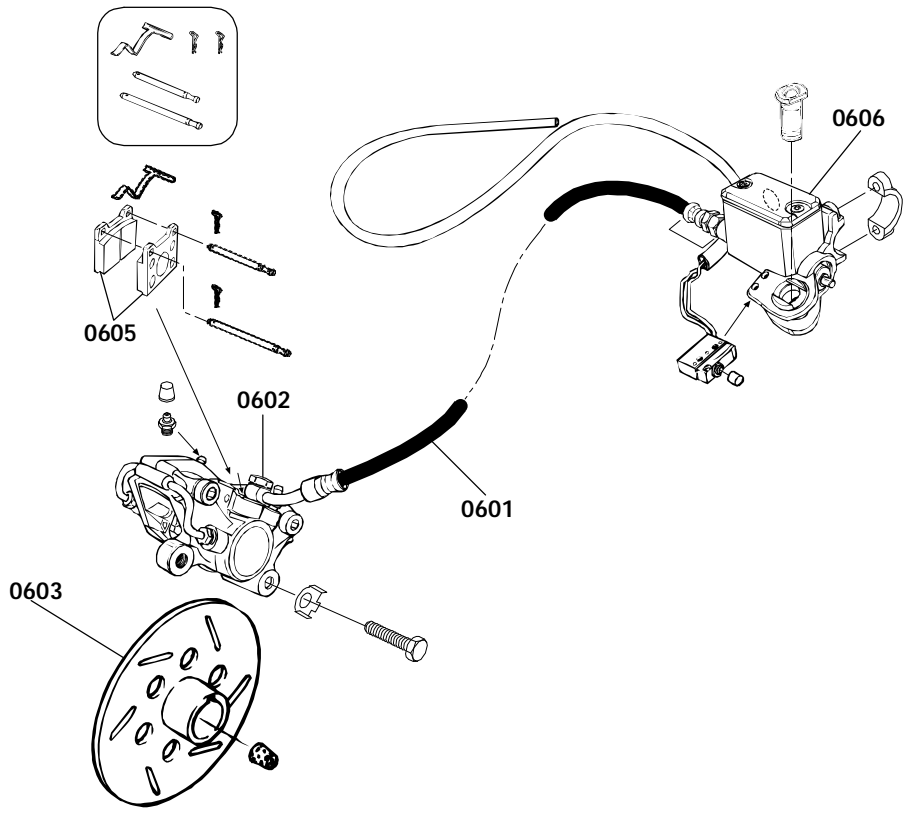
	JOB DESCRIPTION				
		1148	1177	1180	1129
		1149	1178	1181	1130
		1150	1179	1182	1131
		1151		1183	
		1152		1184	
		1153		1185	
		Formula III / III LT	Mach I	Mach Z / Z LT	G.T. SE
<b>06 00</b>	<b>NO LABOUR INVOLVED</b>	<b>N.A.</b>	<b>N.A.</b>	<b>N.A.</b>	<b>N.A.</b>
06 01	BRAKE CABLE/LINE AND HOUSING	0,7	0,7	0,7	0,7
06 02	BRACKET-CALIPER-BRAKE PAD-RELEASE SPRING	0,8	0,8	0,8	0,8
06 03	DISC	1,2	1,2	1,2	1,2
06 05	BRAKE PADS	0,3	0,3	0,3	0,3
06 06	MASTER CYLINDER	1,2	1,2	1,2	1,2

\* REQUIRES PRIOR AUTHORIZATION BY DISTRIBUTOR.

\*\* INDICATE LABOUR TIME ON LINE "LABOUR ONLY" OF CLAIM.

\*\*\* INDICATE \$\$\$ AMOUNT ON "SUB-CONTRACTED LABOUR" OF CLAIM.

**SYSTEM 06**



A03D2LS



# **SYSTEM 07**

## ***Steering / Controls and Front Suspension***

# SYSTEM 07 : Steering / Controls and Front Suspension

ALWAYS USE THE *LONGEST* FLAT RATE TIME  
APPLICABLE TO THE REPAIR PERFORMED.

**JOB CODE  
TO INSERT ON CLAIM**



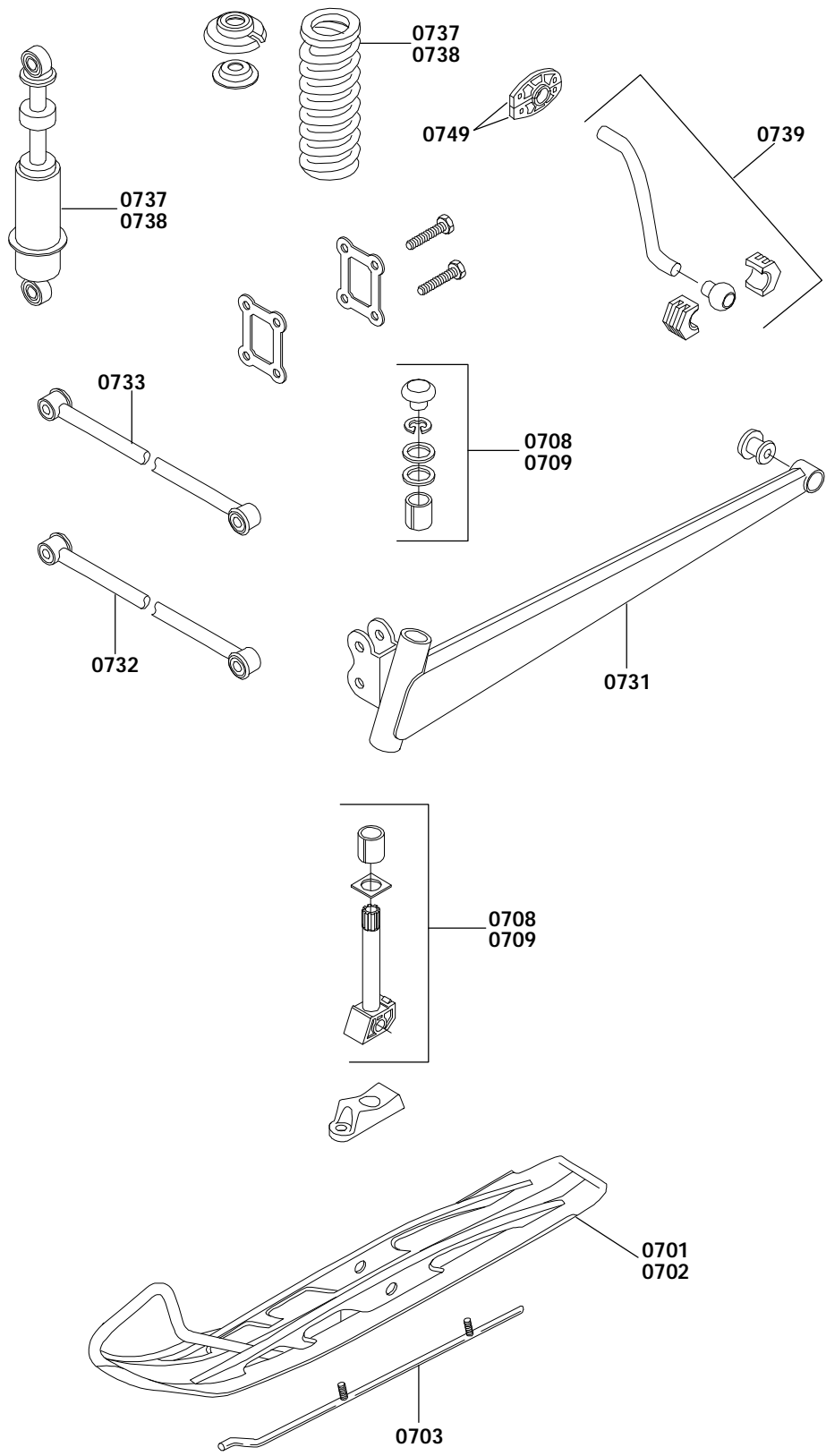
	JOB DESCRIPTION				
		Formula III / III LT	Mach I	Mach Z / Z LT	G.T. SE
		1148	1177	1180	1129
		1149	1178	1181	1130
		1150	1179	1182	1131
		1151		1183	
		1152		1184	
		1153		1185	
		<b>N.A.</b>	<b>N.A.</b>	<b>N.A.</b>	<b>N.A.</b>
<b>07 00</b>	<b>NO LABOUR INVOLVED</b>				
07 01	SKI (ONE)	0,3	0,3	0,3	0,3
07 02	SKIS (TWO)	0,4	0,4	0,4	0,4
07 03	SKI RUNNER SHOES	0,3	0,3	0,3	0,3
07 08	SKI LEG (R.H.) AND/OR BUSHING	0,3	0,3	0,3	0,3
07 09	SKI LEG (L.H.) AND/OR BUSHING	0,3	0,3	0,3	0,3
07 10	STEERING ARM (R.H.)	0,3	0,3	0,3	0,3
07 11	STEERING ARM (L.H.)	0,3	0,3	0,3	0,3
07 12	R.H. STEERING ARM BALL JOINT	0,3	0,3	0,3	0,3
07 13	L.H. STEERING ARM BALL JOINT	0,3	0,3	0,3	0,3
07 18	TIE ROD (MAIN TUBE/STEERING ARM)	0,5	0,5	0,5	0,5
07 19	TIE ROD (FOR R.H. AND L.H. STEERING ARM)	0,3	0,3	0,3	0,3
07 20	TIE ROD COVER (ONE)	0,4	0,4	0,4	0,4
07 21	TIE ROD COVER (TWO)	0,8	0,8	0,8	0,8
07 22	STEERING PIVOT ARM	0,5	0,5	0,5	0,5
07 23	STEERING MAIN TUBE BALL JOINT	0,5	0,5	0,5	0,5
07 24	STEERING MAIN TUBE	1,7	1,7	1,7	1,7
07 25	HANDLE BAR	0,4	0,4	0,4	0,4
07 26	HANDLE BAR GRIP-HOUSING-PARK BRAKE	0,3	0,3	0,3	0,3
07 27	HANDLE BAR PADDING	0,3	0,3	0,3	0,3
07 28	UPPER STEERING MAIN TUBE BUSHING	0,7	0,7	0,7	0,7
07 29	LOWER STEERING MAIN TUBE BUSHING	0,5	0,5	0,5	0,5
07 30	BRAKE OR THROTTLE LEVER	0,3	0,3	0,3	0,3
07 31	SWING ARM (L.H. OR R.H.)	0,4	0,4	0,4	0,4
07 32	LOWER ARM (L.H. OR R.H.)	0,5	0,5	0,5	0,5
07 33	UPPER ARM (L.H. OR R.H.)	0,3	0,3	0,3	0,3
07 34	UPPER ARM BALL JOINT(LH OR RH) OR CUSHIM	0,3	0,3	0,3	0,3
07 37	SHOCK AND/OR SPRING (ONE)	0,3	0,3	0,3	0,3
07 38	SHOCKS AND/OR SPRINGS (TWO)	0,4	0,4	0,4	0,4
07 39	STABILIZER BAR	0,4	0,4	0,4	0,4
07 49	STABILIZER BAR PAD OR BUSHING	0,3	0,3	0,3	0,3
07 55	FRONT SWING ARM DECAL ONE OR TWO	0,3	0,3	0,3	0,3

\* REQUIRES PRIOR AUTHORIZATION BY DISTRIBUTOR.

\*\* INDICATE LABOUR TIME ON LINE "LABOUR ONLY" OF CLAIM.

\*\*\* INDICATE \$\$\$ AMOUNT ON "SUB-CONTRACTED LABOUR" OF CLAIM.

**SYSTEM 07**





# **SYSTEM 08**

## ***Rear Suspension and Track***

## SYSTEM 08 : Rear Suspension and Track

ALWAYS USE THE *LONGEST* FLAT RATE TIME  
APPLICABLE TO THE REPAIR PERFORMED.

**JOB CODE  
TO INSERT ON CLAIM**



	JOB DESCRIPTION				
		Formula III / III LT	Mach I	Mach Z / ZLT	G.T. SE
		1148	1177	1180	1129
		1149	1178	1181	1130
		1150	1179	1182	1131
		1151		1183	
		1152		1184	
		1153		1185	
<b>08 00</b>	<b>NO LABOUR INVOLVED</b>	<b>N.A.</b>	<b>N.A.</b>	<b>N.A.</b>	<b>N.A.</b>
08 01	SLIDER SHOE (ONE)	0,8	0,8	0,8	0,8
08 02	SLIDER SHOES (TWO)	1,0	1,0	1,0	1,0
08 03	RUNNER (ONE)	1,2	1,2	1,2	1,2
08 04	RUNNERS (TWO)	1,5	1,5	1,5	1,5
08 09	FRONT IDLER WHEEL AND/OR BEARING (ONE)	0,3	0,3	0,3	0,3
08 10	FRONT IDLER WHEELS, BEARINGS, SHAFT (2)	0,4	0,4	0,4	0,4
08 11	FRONT IDLER WHEEL SUPPORT (ONE)	0,3	0,3	0,3	0,3
08 12	FRONT IDLER WHEELS SUPPORTS (TWO)	0,4	0,4	0,4	0,4
08 13	CENTER IDLER WHEEL AND/OR BEARING (ONE)	0,3	0,3	0,3	0,3
08 14	CENTER IDLER WHEELS, BEARINGS, SHAFT (2)	0,4	0,4	0,4	0,4
08 15	CENTER IDLER WHEEL SUPPORT (ONE)	0,3	0,3	0,3	0,3
08 17	REAR IDLER AND/OR BEARING (ONE)	0,4	0,4	0,4	0,4
08 18	REAR IDLERS AND/OR BEARINGS (TWO)	0,5	0,5	0,5	0,5
08 19	REAR IDLER WHEELS AXLE	0,5	0,5	0,5	0,5
08 29	AXEL(STOPPER STRAP)	0,3	0,3	0,3	0,3
08 31	TRACK TENSION ADJUSTER (ONE)	0,3	0,3	0,3	0,3
08 32	TRACK TENSION ADJUSTERS (TWO)	0,4	0,4	0,4	0,4
08 33	RUNNER RUBBER STOPPER (ONE)	0,3	0,3	0,3	0,3
08 34	RUNNER RUBBER STOPPERS (TWO)	0,4	0,4	0,4	0,4
08 35	FRONT ARM AND/OR AXLE	0,8	0,8	0,8	0,8
08 36	FRONT ARM STOPPER STRAP/STOPPER BOLT	0,3	0,3	0,3	0,3
08 40	REAR ARM AND/OR AXLE	0,7	0,7	0,7	0,7
08 41	REAR ARM IDLER WHEELS (1-2) AND/OR SHAFT	0,3	0,3	0,3	0,3
08 42	REAR ARM SHACKLE	0,3	0,3	0,3	0,3
08 44	REAR AND FRONT ARMS	1,5	1,5	1,5	1,5
08 50	REAR TORSION SPRING AND OR WHEEL(1)	0,3	0,3	0,3	0,3
08 51	REAR TORSION SPRING AND OR WHEEL(2)	0,4	0,4	0,4	0,4
08 52	TORSION SPRING SUPPORT	0,3	0,3	0,3	0,3
08 53	SPRING ADJUSTMENT CAM (ONE)	0,3	0,3	0,3	0,3
08 54	SPRING ADJUSTMENT CAMS (TWO)	0,4	0,4	0,4	0,4
08 55	SHOCK AND/OR SPRING AND/OR BUSHINGS (1)	0,3	0,3	0,3	0,3

\* REQUIRES PRIOR AUTHORIZATION BY DISTRIBUTOR.

\*\* INDICATE LABOUR TIME ON LINE "LABOUR ONLY" OF CLAIM.

\*\*\* INDICATE \$\$\$ AMOUNT ON "SUB-CONTRACTED LABOUR" OF CLAIM.

**SYSTEM 08**

## SYSTEM 08 : Rear Suspension and Track

ALWAYS USE THE *LONGEST* FLAT RATE TIME  
APPLICABLE TO THE REPAIR PERFORMED.

**JOB CODE  
TO INSERT ON CLAIM**



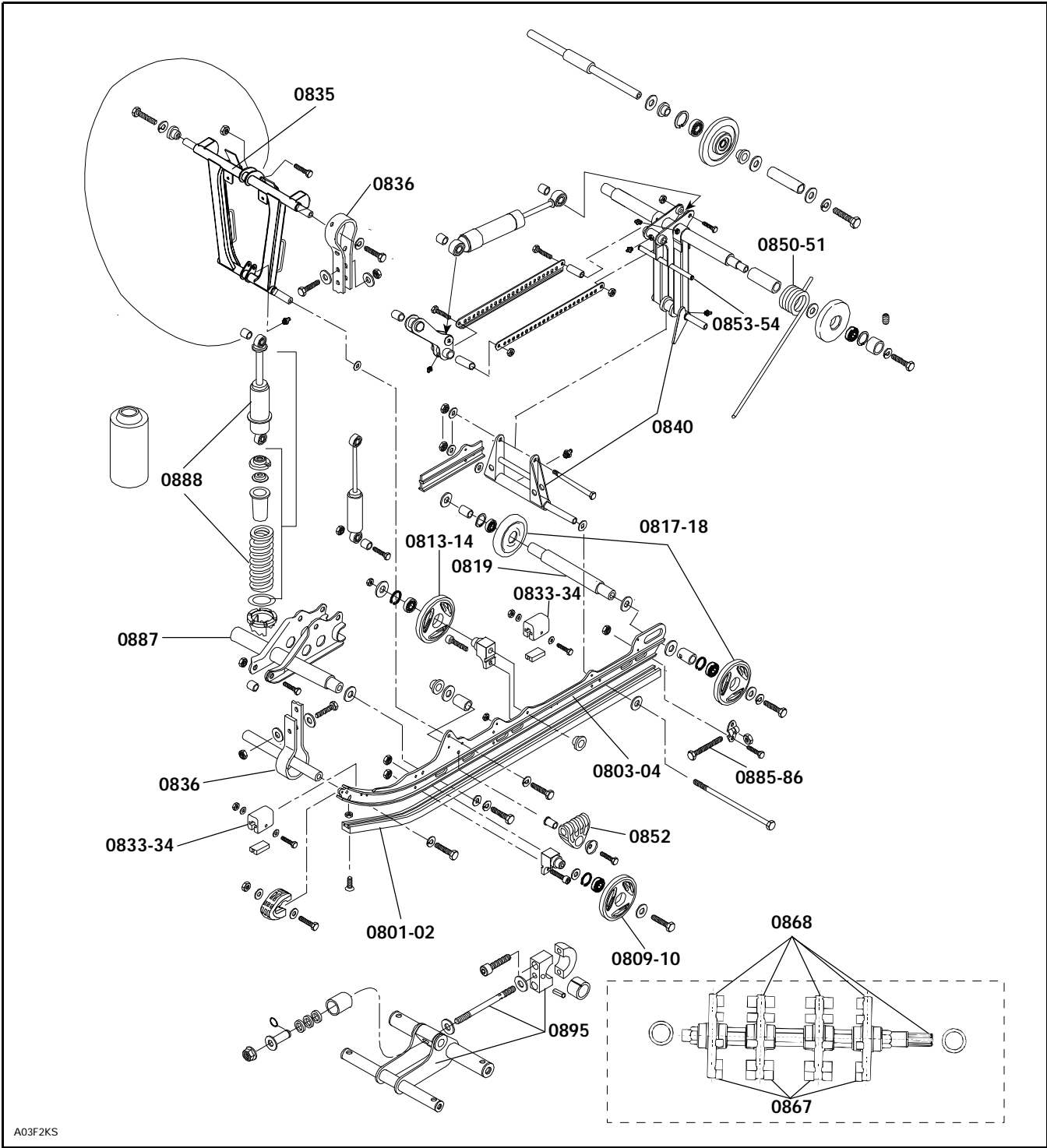
	JOB DESCRIPTION	1148	1177	1180	1129
		1149	1178	1181	1130
		1150	1179	1182	1131
		1151		1183	
		1152		1184	
		1153		1185	
		Formula	Mach	Mach	G.T.
		III / III LT	I	Z / Z LT	SE
08 63	CENTER UPPER IDLER WHEELS(TUNNEL)1 OR 2	0,3	0,3	0,3	0,3
08 65	DRIVE AXLE (R.H) END BEARING HOUSING	0,3	0,3	0,3	0,3
08 66	DRIVE AXLE (R.H) BEARING AND/OR SEAL	2,3	2,3	2,3	2,3
08 67	DRIVE AXLE SPROCKET AND/OR FLANGE (ONE)	2,5	2,5	2,5	2,5
08 68	DRIVE AXLE-SPROCKETS-FLANGES (2 OR MORE)	3,1	3,1	3,1	3,1
08 69	TRACK (ONE)	1,8	1,8	1,8	1,8
08 71	CLEAT AND/OR GUIDE (0-9)	0,3	0,3	0,3	0,3
08 72	CLEAT AND/OR GUIDE (10-14)	0,4	0,4	0,4	0,4
08 73	CLEAT AND/OR GUIDE (15-19)	0,5	0,5	0,5	0,5
08 74	CLEAT AND/OR GUIDE (20-24)	0,6	0,6	0,6	0,6
08 75	CLEAT AND/OR GUIDE (25-29)	0,7	0,7	0,7	0,7
08 76	CLEAT AND/OR GUIDE (30-34)	0,8	0,8	0,8	0,8
08 77	CLEAT AND/OR GUIDE (35-39)	0,9	0,9	0,9	0,9
08 78	CLEAT AND/OR GUIDE (40-44)	1,0	1,0	1,0	1,0
08 79	CLEAT AND/OR GUIDE (45-49)	1,1	1,1	1,1	1,1
08 80	CLEAT AND/OR GUIDE (50-54)	1,2	1,2	1,2	1,2
08 81	CLEAT AND/OR GUIDE (55-59)	1,3	1,3	1,3	1,3
08 82	CLEAT AND/OR GUIDE (60-64)	1,4	1,4	1,4	1,4
08 83	CLEAT AND/OR GUIDE (65-70)	1,5	1,5	1,5	1,5
08 85	ADJUSTMENT SCREW (ONE)	0,3	0,3	0,3	0,3
08 86	ADJUSTMENT SCREW (TWO)	0,4	0,4	0,4	0,4
08 87	SHOCK SUPPORT AND/OR AXLE	0,4	0,4	0,4	0,4
08 88	FRONT SHOCK AND OR SPRING	0,5	0,5	0,5	0,5
08 89	FRONT IDLER WHEELS A/O BEARINGS (3/4)	0,5	0,5	0,5	0,5
08 90	FRONT IDLER WHEELS A/O BEARINGS (5/6)	0,7	0,7	0,7	0,7
08 95	ROD,PIVOT BLOCK,BRACKET WELD (ACM)	0,7	0,7	0,7	0,7

\* REQUIRES PRIOR AUTHORIZATION BY DISTRIBUTOR.

\*\* INDICATE LABOUR TIME ON LINE "LABOUR ONLY" OF CLAIM.

\*\*\* INDICATE \$\$\$ AMOUNT ON "SUB-CONTRACTED LABOUR" OF CLAIM.

**SYSTEM 08**





**SYSTEM 09**  
*Body*

# SYSTEM 09 : Body

ALWAYS USE THE *LONGEST* FLAT RATE TIME  
APPLICABLE TO THE REPAIR PERFORMED.

**JOB CODE  
TO INSERT ON CLAIM**



	JOB DESCRIPTION				
		Formula III / III LT	Mach I	Mach Z / Z LT	G.T. SE
		1148	1177	1180	1129
		1149	1178	1181	1130
		1150	1179	1182	1131
		1151		1183	
		1152		1184	
		1153		1185	
<b>09 00</b>	<b>NO LABOUR INVOLVED</b>	<b>N.A.</b>	<b>N.A.</b>	<b>N.A.</b>	<b>N.A.</b>
09 01	CAB OR HOOD (UPPER)	3,0	3,0	3,0	3,0
09 03	CAB HINGE TRIM AND/OR HINGE	0,3	0,3	0,3	0,3
09 05	CAB DECALS R.H. OR L.H.	0,3	0,3	0,3	0,3
09 06	CAB DECALS ALL	0,9	0,9	0,9	0,9
09 07	CAB LATCH (ONE OR TWO)	0,3	0,3	0,3	0,3
09 09	WINDSHIELD	0,3	0,3	0,3	0,3
09 10	SPEEDOMETER OR TACHOMETER (ALL PARTS)	0,3	0,3	0,3	0,3
09 11	GAS GAUGE OR TEMP. GAUGE (ALL PARTS)	0,3	0,3	0,3	0,3
09 12	SPEEDOMETER DRIVE INSERT	0,4	0,4	0,4	0,4
09 13	CARGO RACK	-	-	-	0,5
09 14	FRONT BUMPER (OUTS CAB) AND/OR HOOD SEAL	0,8	0,8	0,8	0,8
09 16	FRONT BUMPER CAP (L.H. OR R.H.)	0,3	0,3	0,3	0,3
09 17	CONSOLE OR GAS TANK COVER	0,4	0,4	0,4	0,4
09 18	FUEL TANK AND/OR SENDER	1,0	1,0	1,0	1,0
09 19	FUEL TANK CAP	0,1	0,1	0,1	0,1
09 20	FUEL TANK GROMMET	0,3	0,3	0,3	0,3
09 21	SEAT ASS'Y OR BACKREST	0,3	0,3	0,3	0,3
09 22	SEAT COVER	0,5	0,5	0,5	1,5
09 23	FOAM FOR SEAT	0,5	0,5	0,5	1,5
09 24	BOTTOM PAN	2,0	2,0	2,0	2,0
09 30	REAR FOOT REST	-	-	-	0,3
09 33	HEAT EXCHANGER	3,6	3,6	3,6	3,6
09 34	REAR BUMPER	0,3	0,3	0,3	0,3
09 36	FUEL SHUT OFF VALVE	0,3	0,3	0,3	0,3
09 37	HANDLE STEERING SUPPORT	0,5	0,5	0,5	0,5
09 38	FUEL LEVEL SENSOR	1,2	1,2	1,2	1,2
09 40	BUMPER DECALS OR MOULDING	0,3	0,3	0,3	0,3
09 42	MOULDING (L.H. OR R.H.)	0,3	0,3	0,3	0,3
09 46	ANTIFREEZE REFILL CAP	0,1	0,1	0,1	0,1
09 48	FOOT REST (FRONT R.H.)	0,4	0,4	0,4	0,4
09 49	FRAME ASS'Y OR FRONT MEMBER	11,6	11,6	11,6	11,6

\* REQUIRES PRIOR AUTHORIZATION BY DISTRIBUTOR.

\*\* INDICATE LABOUR TIME ON LINE "LABOUR ONLY" OF CLAIM.

\*\*\* INDICATE \$\$\$ AMOUNT ON "SUB-CONTRACTED LABOUR" OF CLAIM.

**SYSTEM 09**

## SYSTEM 09 : Body

ALWAYS USE THE *LONGEST* FLAT RATE TIME  
APPLICABLE TO THE REPAIR PERFORMED.

**JOB CODE  
TO INSERT ON CLAIM**



	JOB DESCRIPTION				
		Formula III / III LT	Mach I	Mach Z / Z LT	G.T. SE
1148			1177	1180	1129
1149			1178	1181	1130
1150			1179	1182	1131
1151				1183	
1152				1184	
1153				1185	
09 50	FRAME FORMING (TUNNEL)	14,1	14,1	14,1	14,1
09 51	REAR CAP	0,7	0,7	0,7	0,7
09 52	SIDE BRACKET (R.H. OR L.H.)	0,7	0,7	0,7	0,7
09 53	COOLANT RESERVOIR	0,7	0,7	0,7	0,7
09 55	SNOW GUARD (ONE)	0,3	0,3	0,3	0,3
09 58	BACKREST AND/OR COVER	-	-	-	0,3
09 59	BACKREST ARM	-	-	-	0,3
09 60	FUEL FILTER	0,3	0,3	0,3	0,3
09 62	BOTTOM PAN REINFORCEMENT(ONE)	0,3	0,3	0,3	0,3
09 63	BOTTOM PAN REINFORCEMENT (TWO)	0,6	0,6	0,6	0,6
09 64	SEAT BELT	-	-	-	0,3
09 68	HOOD GUIDE RIGHT OR LEFT	0,3	0,3	0,3	0,3
09 69	CAB HINGE SUPPORT FOR ONE (1)	0,3	0,3	0,3	0,3
09 71	FUEL TANK COVER	1,0	1,0	1,0	1,0
09 72	TUNNEL DECAL (ONE OR TWO)	0,3	0,3	0,3	0,3

\* REQUIRES PRIOR AUTHORIZATION BY DISTRIBUTOR.

\*\* INDICATE LABOUR TIME ON LINE "LABOUR ONLY" OF CLAIM.

\*\*\* INDICATE \$\$\$ AMOUNT ON "SUB-CONTRACTED LABOUR" OF CLAIM.

**SYSTEM 09**

**SYSTEM 10**  
*Electrical System*

# SYSTEM 10 : Electrical System

ALWAYS USE THE *LONGEST* FLAT RATE TIME  
APPLICABLE TO THE REPAIR PERFORMED.

**JOB CODE  
TO INSERT ON CLAIM**



	JOB DESCRIPTION				
		1148	1177	1180	1129
		1149	1178	1181	1130
		1150	1179	1182	1131
		1151		1183	
		1152		1184	
		1153		1185	
		Formula III / III LT	Mach I	Mach Z / Z LT	G.T. SE
<b>10 00</b>	<b>NO LABOUR INVOLVED</b>	<b>N.A.</b>	<b>N.A.</b>	<b>N.A.</b>	<b>N.A.</b>
10 01	IGNITION SWITCH	0,3	0,3	0,3	0,3
10 02	DIMMER SWITCH	0,3	0,3	0,3	0,3
10 03	KILL SWITCH	0,3	0,3	0,3	0,3
10 05	BRAKE LIGHT SWITCH	0,3	0,3	0,3	0,3
10 06	TETHER CORD SWITCH	0,3	0,3	0,3	0,3
10 07	IGNITION SWITCH BLOCK	0,3	0,3	0,3	0,3
10 08	CURRENT OR GROUND WIRE	-	-	-	0,3
10 09	HEADLAMP ASS'Y (ANY/OR ALL PARTS)	0,3	0,3	0,3	0,3
10 10	VOLTAGE REGULATOR	0,3	0,3	0,3	-
10 11	RECTIFIER	-	-	-	0,3
10 12	TAIL LIGHT ASS'Y (ANY/OR ALL PARTS)	0,3	0,3	0,3	0,3
10 13	BATTERY, RACK, RETAINER ROD OR RETAINER	-	-	-	0,3
10 15	HEATED GRIPS	0,4	0,4	0,4	0,4
10 16	BULBS (ANY OR ALL)	0,3	0,3	0,3	0,3
10 17	HEATED THROTTLE LEVER	0,3	0,3	0,3	0,3
10 18	HEAT GRIP SWITCH (ONE)	0,3	0,3	0,3	0,3
10 19	HEAT GRIP SWITCHES (TWO)	0,4	0,4	0,4	0,4
10 20	BACK UP BUZZER	-	-	-	0,3

\* REQUIRES PRIOR AUTHORIZATION BY DISTRIBUTOR.

\*\* INDICATE LABOUR TIME ON LINE "LABOUR ONLY" OF CLAIM.

\*\*\* INDICATE \$\$\$ AMOUNT ON "SUB-CONTRACTED LABOUR" OF CLAIM.

**SYSTEM 10**

**SYSTEM 11**  
*Claim Type 02 Use Only*

# SYSTEM 11 : Claim Type 02 Use Only

ALWAYS USE THE *LONGEST* FLAT RATE TIME  
APPLICABLE TO THE REPAIR PERFORMED.

**JOB CODE  
TO INSERT ON CLAIM**



**JOB DESCRIPTION**

**11 00** NO LABOUR INVOLVED

1148	1177	1180	1129
1149	1178	1181	1130
1150	1179	1182	1131
1151		1183	
1152		1184	
1153		1185	
Formula III / III LT	Mach I	Mach Z / Z LT	G.T. SE
<b>N.A.</b>	<b>N.A.</b>	<b>N.A.</b>	<b>N.A.</b>

\* REQUIRES PRIOR AUTHORIZATION BY DISTRIBUTOR.

\*\* INDICATE LABOUR TIME ON LINE "LABOUR ONLY" OF CLAIM.

\*\*\* INDICATE \$\$\$ AMOUNT ON "SUB-CONTRACTED LABOUR" OF CLAIM.

# WARRANTY INFORMATION

## WARRANTY PARTS TO RETURN

**\*\*\* SKI-DOO \*\*\***

PISTON  
CRANKSHAFT  
CYLINDER  
CRANKCASE  
SHORT BLOCK  
ENGINE ASSEMBLY  
TRACK

## PART NUMBERS AVAILABLE FOR WARRANTY CLAIMING PURPOSES ONLY

P/N	DESCRIPTION	QUANTITY
413801901	CHAIN CASE OIL	1 BOTTLE (250 ML)
413803301	CHAIN CASE OIL	1 BOTTLE (355 ML)

**NOTE:** These part numbers mentioned above can not be ordered at the parts department.

***IMPORTANT***, refer to the Dealer Warranty Guide for additional information.



**FLAT RATE TIME - SUGGESTION FOR CHANGE**

**DEALER'S CODE:** \_\_\_\_\_ **DATE:** \_\_\_\_\_

**DEALER'S NAME:** \_\_\_\_\_

**ADDRESS:**  
\_\_\_\_\_  
\_\_\_\_\_  
\_\_\_\_\_  
\_\_\_\_\_

--	--	--	--	--	--

<b>YEAR</b>	<b>MODEL DESCRIPTION</b>	<b>OPERATION</b>	<b>JOB CODE</b>	<b>PRESENT FRT</b>	<b>SUGGESTED FRT</b>
-------------	--------------------------	------------------	-----------------	------------------------	--------------------------

**Detailed procedure used:**

---

---

---

---

---

---

---

---

---

---

**Signature:** \_\_\_\_\_

**RETURN TO:** **BOMBARDIER INC.**  
**SEA-DOO / SKI-DOO DIVISION**  
**WARRANTY ADMINISTRATION DEPARTMENT**