

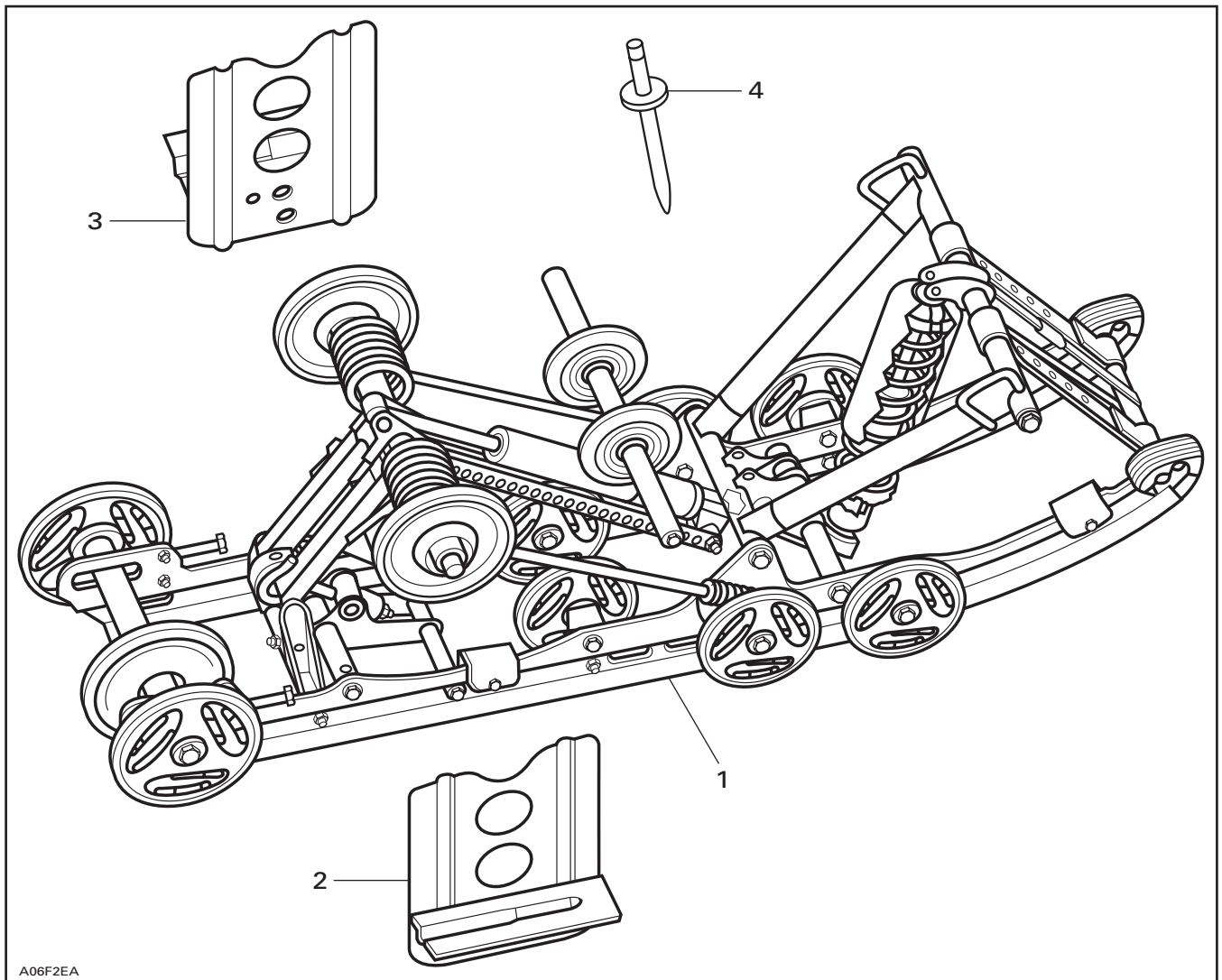


◆ **WARNING**

For safety reasons, this kit must be installed by an authorized Bombardier snowmobile dealer. Should removal of a locking device be required when undergoing disassembly/assembly, always replace with a new one. This instruction sheet should be given to the purchaser. This kit is designed for specific applicable models only. It is not recommended for vehicles other than those for which it was sold.

NOTE: Installation time is approximately 2.0 hours.

**PARTS TO BE INSTALLED**



- 1. Rear Suspension SC-10
- 2. Rear Welded Bracket (RH)
- 3. Rear Welded Bracket (LH)
- 4. Rivet (18)

## VEHICLE PREPARATION

**NOTE:** If additional information is required, refer to *Ski-Doo Shop Manual*, Section 07 for proper removal/installation procedures.

Raise rear of vehicle and block safely.

Remove rear suspension.

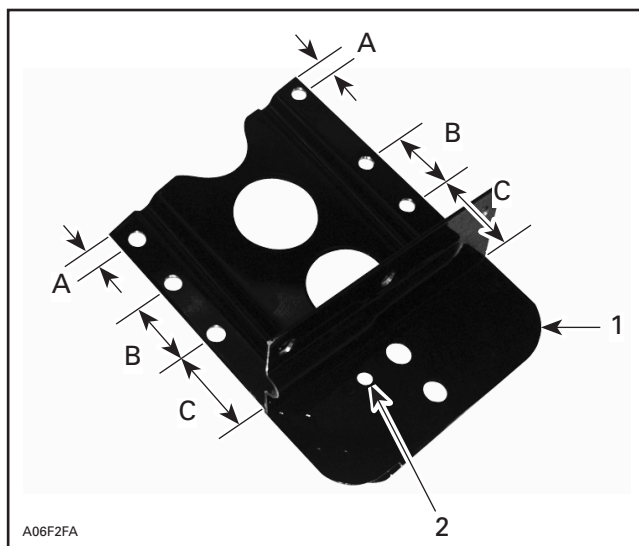
## INSTALLATION

Referring to the illustration to the right, mark position of holes on both welded brackets. Locate 6 holes as indicated and 3 holes for the foot rest

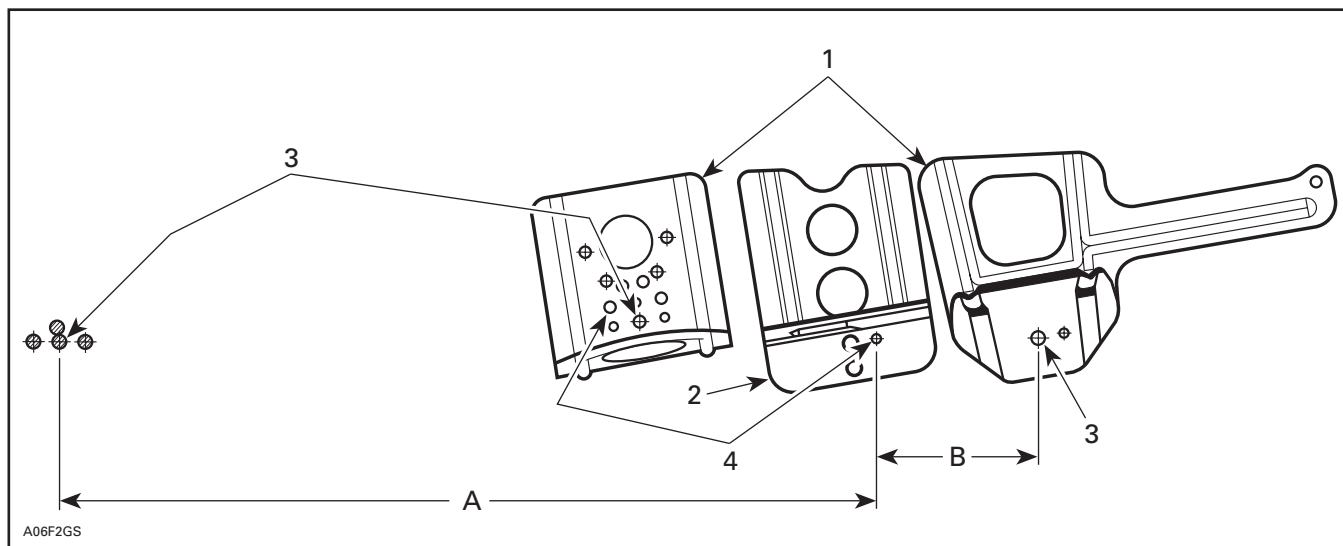
➡ Drill holes as indicated using a 4.8 mm (3/16 in) drill bit.

➡ Redrill existing small hole to 10.3 mm (13/32 in).

Using existing brackets as a reference, position new brackets **no. 2** and **no. 3** inside tunnel, on each side.



1. Bracket Right Hand Side
2. Drill hole to 10.3 mm (13/32 in)
- A. 10 mm (25/64 in)
- B. 30 mm (1-3/16 in)
- C. 30 mm (1-3/16 in)



1. Existing brackets
2. New bracket
3. Existing holes
4. Holes for new suspension
- A. 626.2 mm (24 21/32 in)
- B. 124.0 mm (4 7/8 in)

➡ Using new bracket as a template, drill 6 holes through side of tunnel and 3 holes through foot rest.

Secure new bracket **no. 2** and **no. 3** with rivets **no. 4**.

**NOTE:** Do not remove existing brackets.

➡ Locate and drill holes to 10.3 mm (13/32 in) in existing brackets for new suspension.

Refer to illustration above for proper location of new holes.

Install new suspension **no. 1** in tunnel.

Use existing holes to secure front upper axle.

Secure rear upper axle in previously resized hole of new bracket.

Secure wheel support axle using new holes in existing bracket.

Adjust track tension and alignment.



## **WARNING**

Before checking track tension and alignment, ensure that the track is free of all particles which could be thrown out while rotating. Keep hands, tools, feet and clothing clear of track. Ensure no one is standing in close proximity to the vehicle.