

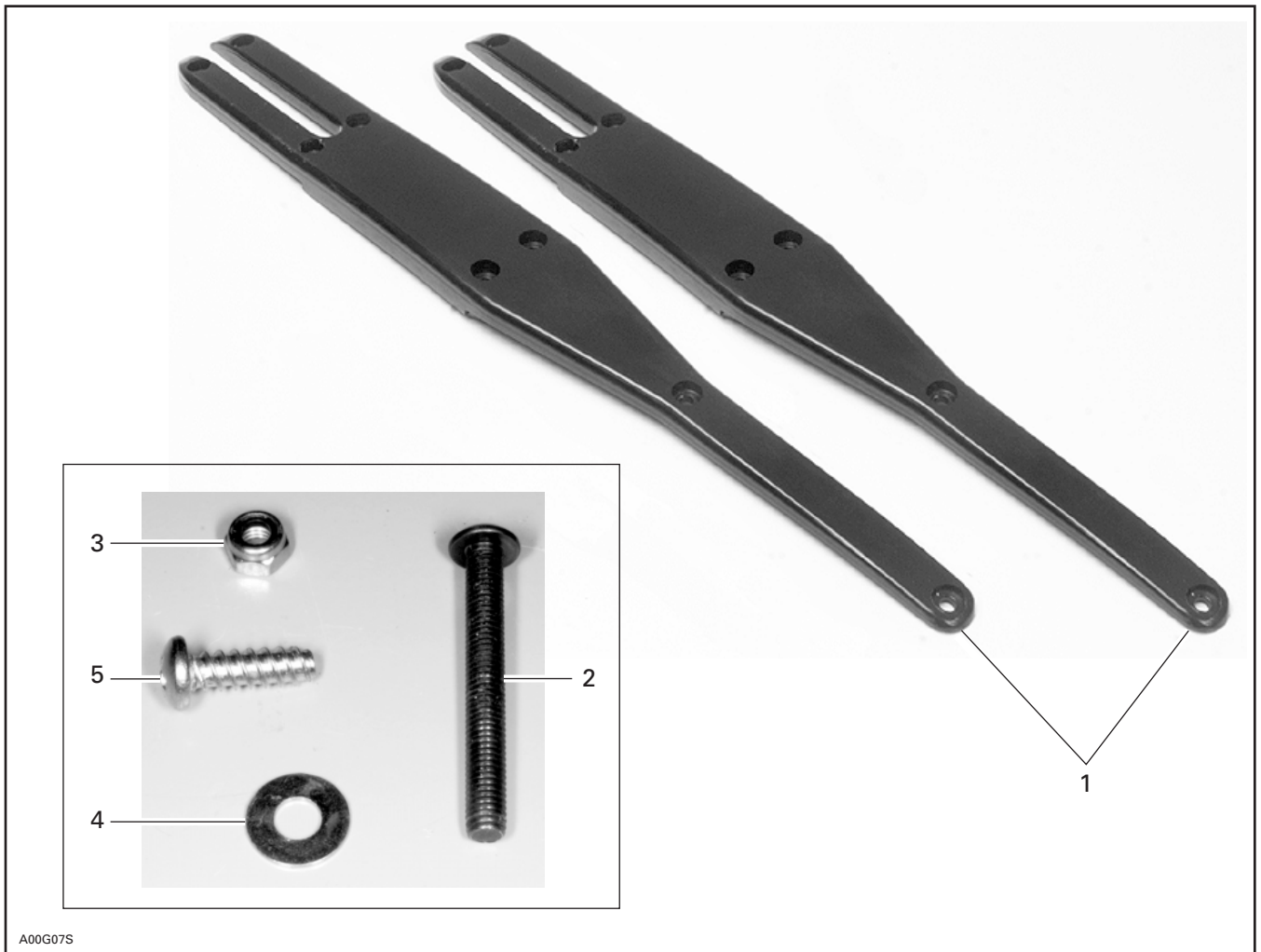


◆ **WARNING**

For safety reasons, this kit must be installed by an authorized Bombardier snowmobile dealer. Should removal of a locking device be required when undergoing disassembly/assembly, always replace with a new one. This instruction sheet should be given to the purchaser. This kit is designed for specific applicable models only. It is not recommended for vehicles other than those for which it was sold.

NOTE: Installation time is approximately 0.5 hour.

PARTS TO BE INSTALLED



- 1. Proactive Control (2)
- 2. Screw M5 X 30 (2)
- 3. Elastic Nut M5 (2)

- 4. Washer (2)
- 5. Self-Tapping Screw (14)

SKI REMOVAL

Lift front of vehicle.

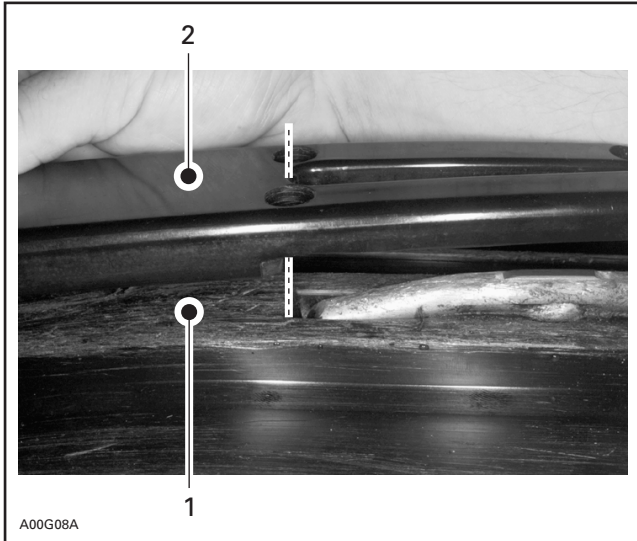
Remove skis from vehicle.

PROACTIVE CONTROLS INSTALLATION

Turn ski over and place in a bench vise.

Position proactive control **no. 1** onto ski.

NOTE: Align proactive control slot with ski runner slot, as shown in the following photo.



1. Ski surface
2. Proactive control

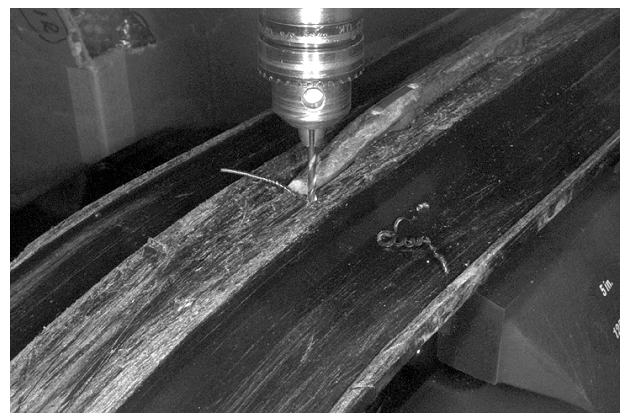
Using a center punch, mark the 2 hole positions, as shown.



Temporarily remove proactive control and drill 4 mm (5/32 in) holes, as shown.

▼ CAUTION

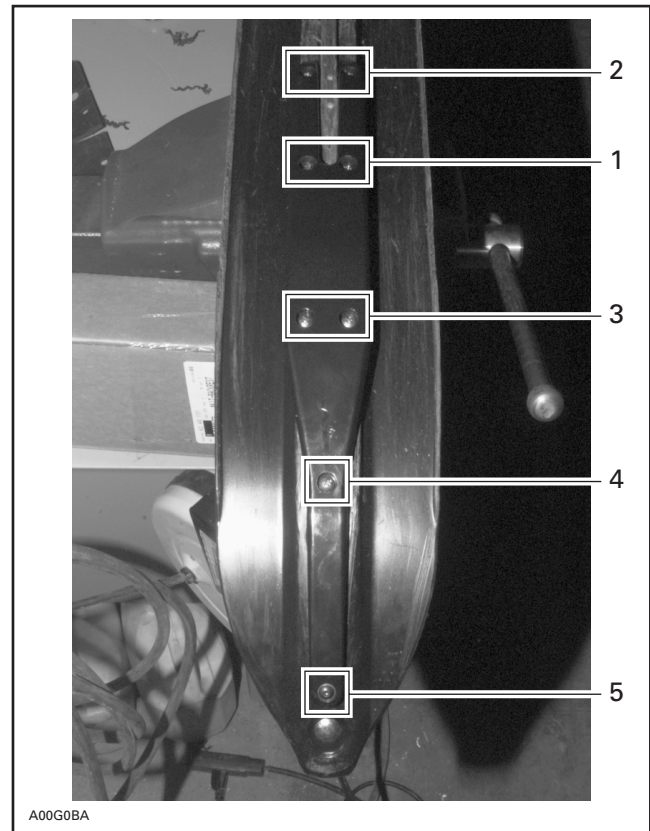
Drill through plastic and stop when touching metal.



Reinstall proactive control.

Secure with self-tapping screws **no. 5**.

Continue proactive control installation using the following sequence.



INSTALLATION SEQUENCE

NOTE: When performing steps 3 and 4 on the installation sequence, use vise-grip to hold proactive control in place. Refer to the following photo.



A00G0CA

SKI INSTALLATION

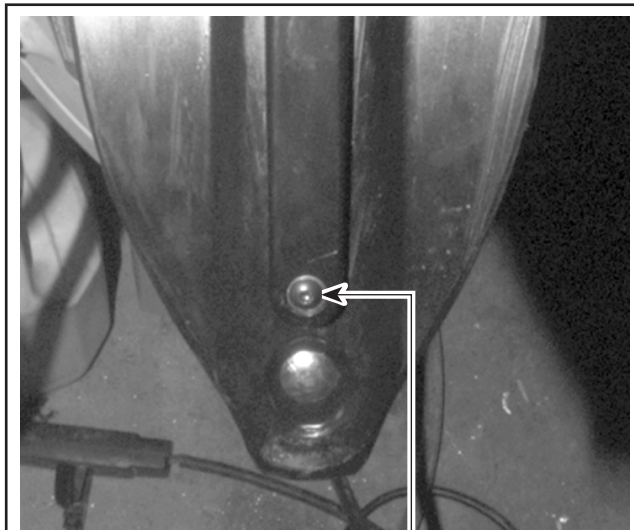
Reinstall both skis on vehicle.

Torque to 40 N•m (30 lbf•pi).

FINALIZING PROACTIVE CONTROL INSTALLATION (STEP 5)

Finalize proactive control installation by drilling a 5.2 mm (13/64 in) hole. Drill through plastic and metal.

Secure with screw **no. 2**, washer **no. 4** and elastic nut **no. 3**, as shown on the next photo.



A00G0DA

1

1. Washer on this side and elastic nut on the other side

Repeat procedure for the other ski.

860 5012 00

1.	572 1069 00	Proactive Control (2)	Contrôle proactif (2)
2.	732 6012 72	Screw M5 X 30 (2)	Vis M5 X 30 (2)
3.	228 5510 45	Elastic Nut M5 (2)	Écrou élastique M5 (2)
4.	224 0611 51	Washer (2)	Rondelle (2)
5.	211 0000 21	Self-Tapping Screw (14)	Vis autotaraudeuse (14)