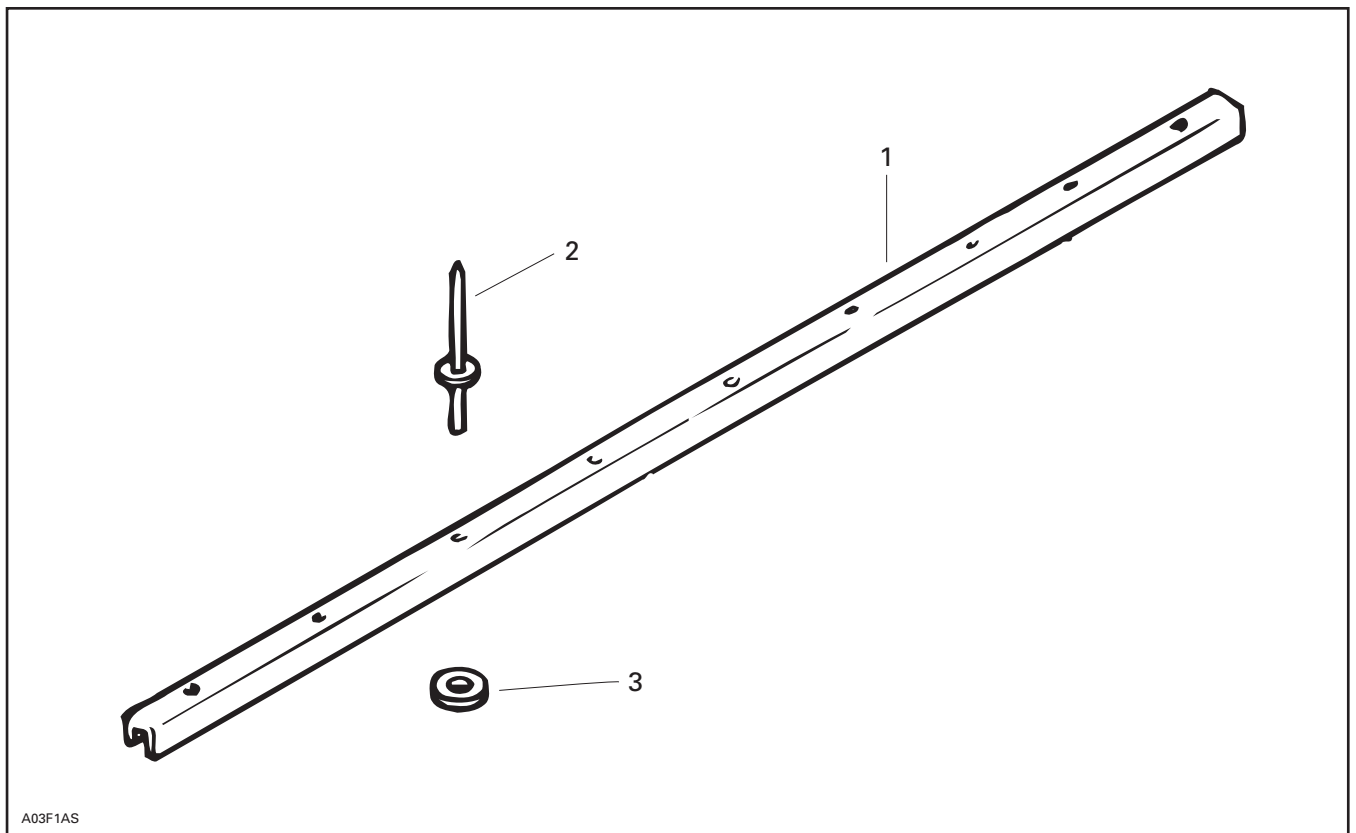




◆ **WARNING :** For safety reasons, this kit must be installed by an authorized Bombardier snowmobile dealer. Should removal of a locking device be required when undergoing disassembly / assembly, always replace with a new one. This instruction sheet should be given to the purchaser. This kit is designed for specific applicable models only. It is not recommended for vehicles other than those for which it was sold.

○ **NOTE :** Installation time is approximately 1.2 hours.

PARTS TO BE INSTALLED



1. Tunnel Protector (2)
2. Rivet (12)
3. Flat Washer (12)

PREPARATION

Vehicle

Remove seat by unscrewing 2 nuts underneath tunnel then pull seat rearwards.

Unplug fuel hose from fuel tank and plug it using a hose pincher, (P / N 529 0099 00).

Unfasten fuel tank and slightly pull it rearwards then unplug vent tube.

Remove fuel tank.

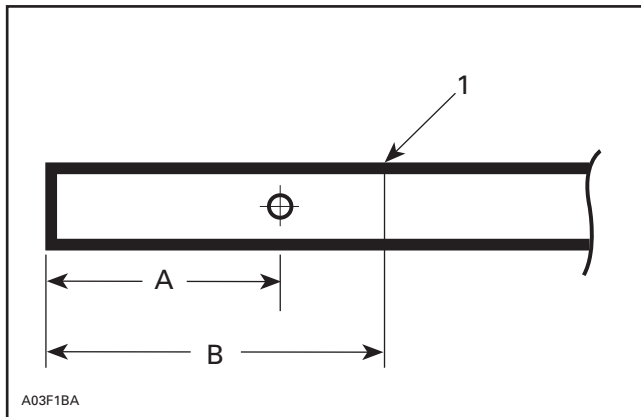
Remove rear suspension.

Tunnel Protector

On short track models (Touring E, Formula S and Formula SL), cut protector to 165 mm (6-1/2 in) **from rear**.

Rear end of protector has a first hole at 120 mm (4-3/4 in). Front end of protector has a first hole at 75 mm (3 in).

CAUTION : Keep front end of tunnel protector intact.



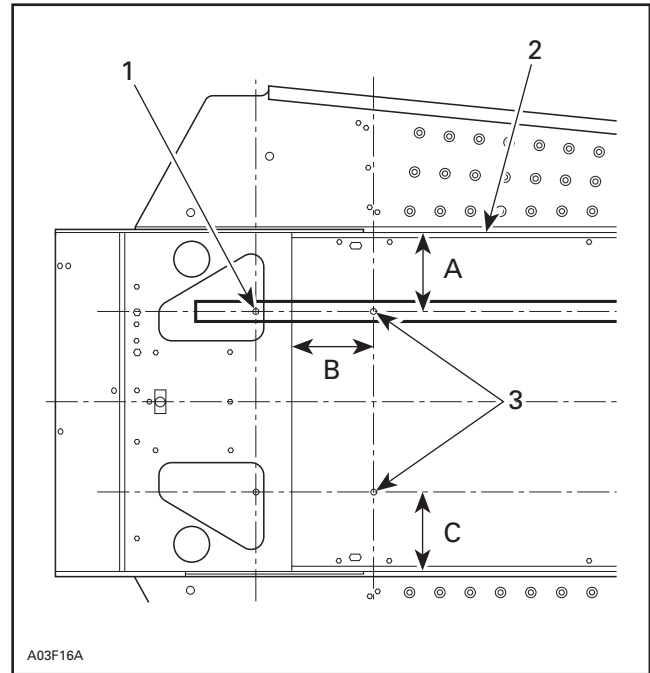
1. Cut here
- A. 120 mm (4-3/4 in)
- B. 165 mm (6-1/2 in)

On long track models, do not cut any length.

INSTALLATION

Tunnel Protector

Drill two 5 mm (3/16 in) dia. holes at front of tunnel.



1. Front hole at 75 mm (2-61/64) in from end
2. Outside edge of tunnel
3. Drill two 5 mm (3/16 in) holes
- A. 99 mm (3-29/32 in)
- B. 102.7 mm (4-7/16 in)
- C. 99 mm (3-29/32 in)

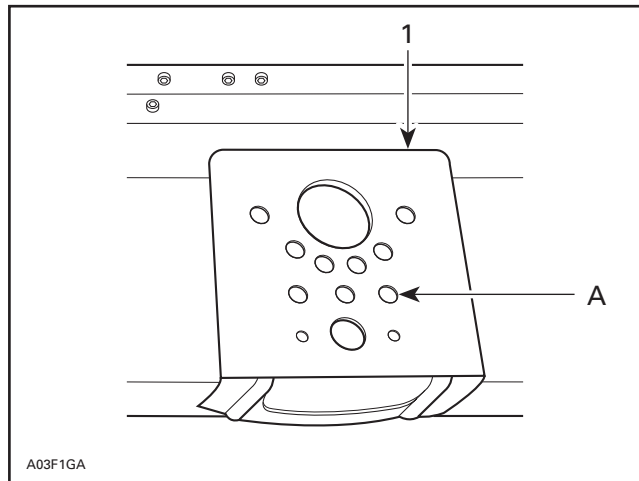
Install protectors **no. 1** on tunnel using rivets **no. 2**. Washer **no. 3** goes on protector side and rivet head on top of tunnel.

Align protectors parallel to tunnel side.

Use protector as a template to drill tunnel before riveting.

Center Idler Wheel Support

Use supplied template to drill a new hole on both supports.



LH SIDE SHOWN

1. Existing hole
2. Template
3. Existing hole
- A. 8.4 mm (21/64 in)
- B. 8.4 mm (21/64 in)
- C. 10.4 mm (27/64 in)
- D. 8.4 mm (21/64 in)
- E. 8.4 mm (21/64 in)
- F. 6.4 mm (1/4 in)

Relocate center idler wheel axle to one hole below the original location, drill as required.

Reinstall all parts.

861 7492 00

1.	560 1024 00	Tunnel Protector (2)	Protecteur de tunnel (2)
2.	390 4030 00	Rivet (12)	Rivet (12)
3.	391 3031 00	Flat Washer (12)	Rondelle plate (12)