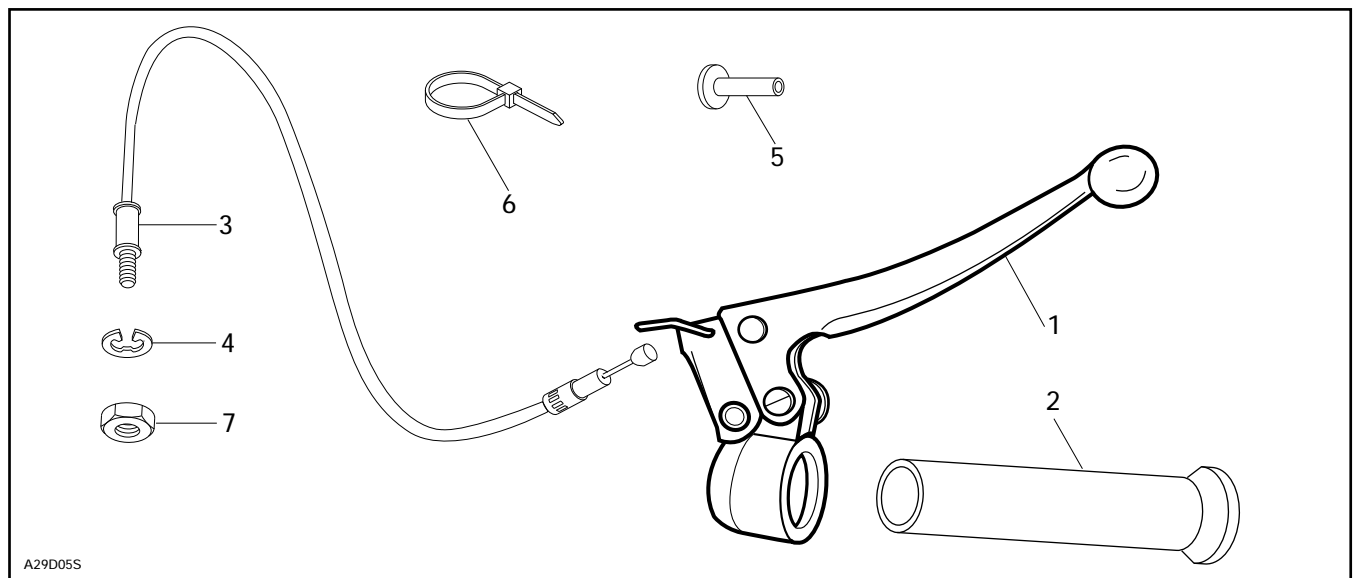




◆ **WARNING :** For safety reasons, this kit must be installed by an authorized Bombardier Ski-Doo snowmobile dealer. Should removal of a locking device be required when undergoing disassembly / assembly, always replace with a new one. This instruction sheet should be given to the purchaser after modification. This kit is designed for a specific model only. It is not recommended for snowmobiles other than that for which it was sold.

○ **NOTE :** Installation time is approximately 1.0 hour.

PARTS TO BE INSTALLED



1. Brake Lever Assembly (Right Side)
2. Hand Grip
3. Brake Cable
4. Circlip

5. Pin (Brake Lever)
6. Locking Tie
7. Elastic Stop Nut M6

PARTS REMOVAL

Open hood.

Remove belt guard.

Remove steering pad (keyway and bolts).

Remove right side hand grip as follows :

Cut end off the grip using a sharp knife. Carefully cut a small split at the outer edge then tear grip off.

▼ **CAUTION :** Avoid cutting the heating element beneath the grip.

Remove tape from both ends of the heating element.

Remove the heating element by carefully spreading it apart.

Remove the screw from the brake lever housing no. 1.

Install the brake lever on the handlebar. Assure that the cables from the heating element go through the gap on the housing.

○ **NOTE :** Loosen and move the throttle lever housing to the left if needed for a proper fit.

Tighten brake lever housing.

▼ **CAUTION :** Position brake lever so it does not interfere with the throttle lever.

Reinstall heating element. Assure to put 3 turns of electrical tape around both ends of element.

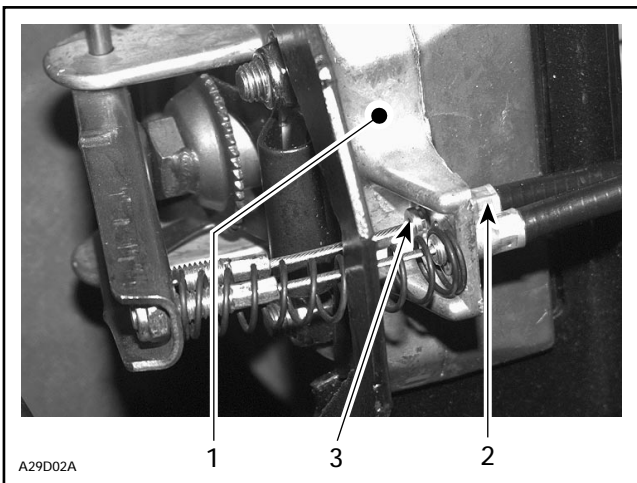
Install new hand grip no. 2. Use soapy water to ease installation. Mix solution with 1 part liquid soap to 40 parts water.

Install top portion of brake cable in brake lever then install pin no. 5.

Follow throttle cable routing along steering tube then toward left side brake cable. Continue to caliper location.

Install threaded end of brake cable no. 3 through the mobile brake lining holder.

Pull cable all the way through hole then install circlip no. 4 around lip.

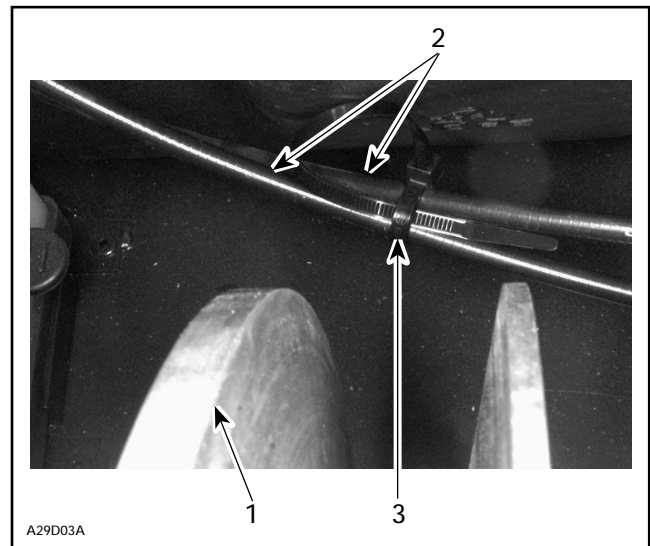


1. Mobile brake lining holder
2. Brake cable
3. Install circlip here

Pull on brake lever (in engine compartment), slide threaded section through hole and install elastic stop nut no. 7.

Attach brake cables together using locking tie no. 6.

◆ **WARNING** : Attach brake cables together so that they do not rub on driven pulley.



1. Driven pulley
2. Brake cables
3. Locking tie

Cut a 25 mm (1 in) hole on the right side of the steering pad. Refer to the following photo.



1. Cut here

Install steering pad on vehicle, route brake cable through hole.

Reinstall keyway and bolts.

Reinstall belt guard.

M5340394

1.	M24003	Brake Lever Assembly (Right Side)	Manette de frein d'urgence (complète) (côté droit)
2.	M549411	Hand Grip	Poignée
3.	M535656	Brake Cable	Câble de frein
4.	M31038	Circlip	Circlip
5.	M24020	Pin (Brake Lever)	Goupille de manette de frein d'urgence
6.	414 1152 00	Locking Tie	Attache
7.	228 5610 45	Elastic Stop Nut M6	Écrou d'arrêt élastique M6