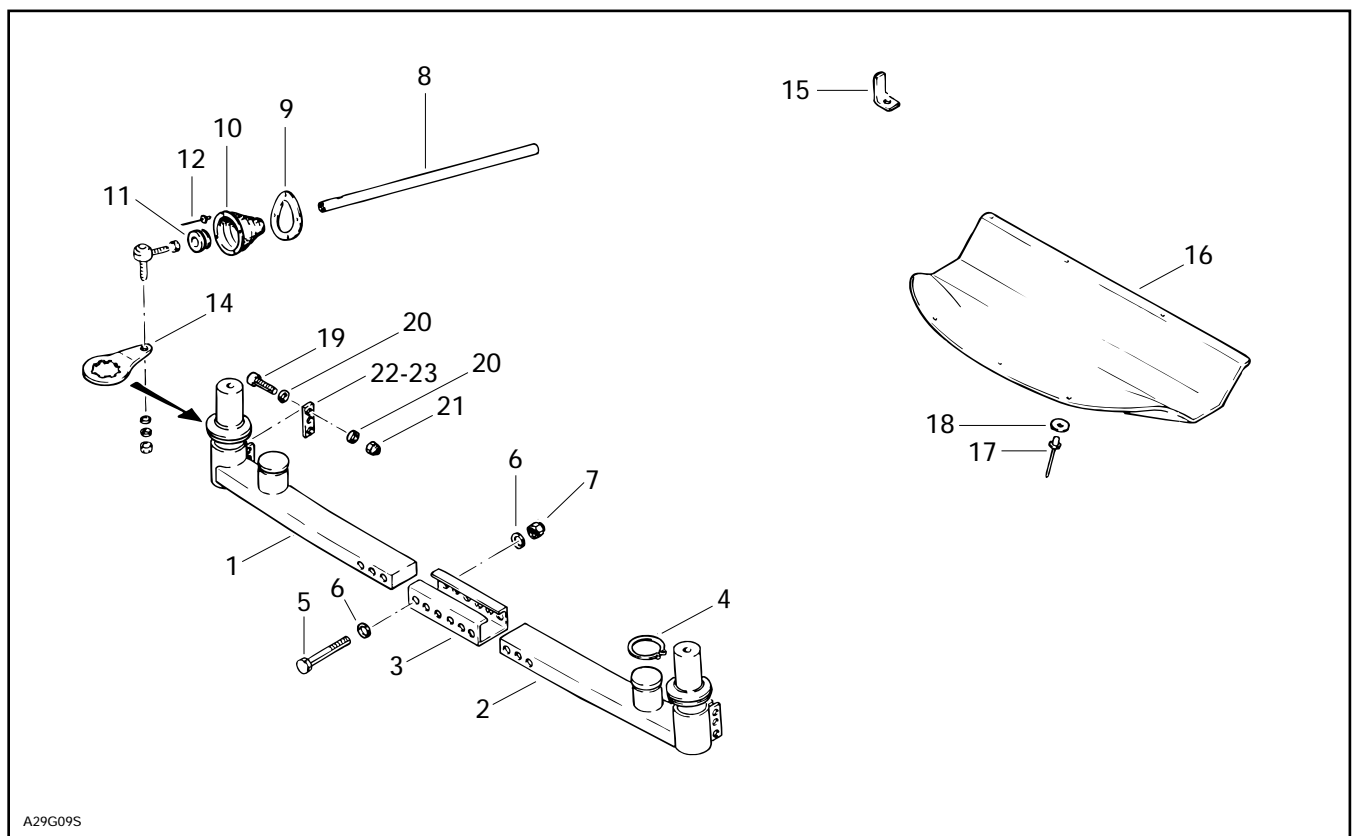




◆ **WARNING :** For safety reasons, this kit must be installed by an authorized Bombardier Ski-Doo snowmobile dealer. Should removal of a locking device be required when undergoing disassembly / assembly, always replace with a new one. This instruction sheet should be given to the purchaser after modification. This kit is designed for a specific model only. It is not recommended for snowmobiles other than those for which it was sold.

○ **NOTE :** Installation time is approximately 4.0 hours.

PARTS TO BE INSTALLED



A29G09S

- | | |
|------------------------------------|-------------------------------|
| 1. Welded Cross Member, Right Side | 13. Reverse Decal (Not Shown) |
| 2. Welded Cross Member, Left Side | 14. Steering Arm (2) |
| 3. Middle Plate | 15. Locking Device |
| 4. Circlip (2) | 16. Skid Plate |
| 5. Bolt M10 (6) | 17. Rivet (10) |
| 6. Washer (12) | 18. Washer (10) |
| 7. Elastic Nut M10 (6) | 19. Socket Screw M8 (6) |
| 8. Tie-Rod (2) | 20. Washer (12) |
| 9. Flange (2) | 21. Elastic Nut M8 (6) |
| 10. Rubber Boot (2) | 22. Adjustment Plate (2) |
| 11. Glide Bushing (2) | 23. Adjustment Plate (4) |
| 12. Rivet (8) | |

VEHICLE PREPARATION

Refer to *Ski-Doo Shop Manual* for proper removal / installation and ski alignment procedures.

NOTE : These instructions are written to perform the installation one side at a time. You may install both sides at the same time.

Lift the front of the vehicle and support it with a stand.

PARTS REMOVAL

Remove tuned pipe.

Remove ski bolt, washers, nuts, rubber bushings and ski.

Remove TRA.

Unscrew tie-rod at both ends then remove completely.

Remove outer tie-rod ends.

Remove the 2 bolts, nuts and spacers from the existing cross member.

Pry apart the extremity of cross member in order to remove LTS.

Remove LTS (complete suspension assembly).

Steering Arm Replacement Procedure

Put LTS in a vice.

CAUTION : Do not overtighten vice. Overtightening may damage the outer surface of the LTS.

Remove rubber cap.

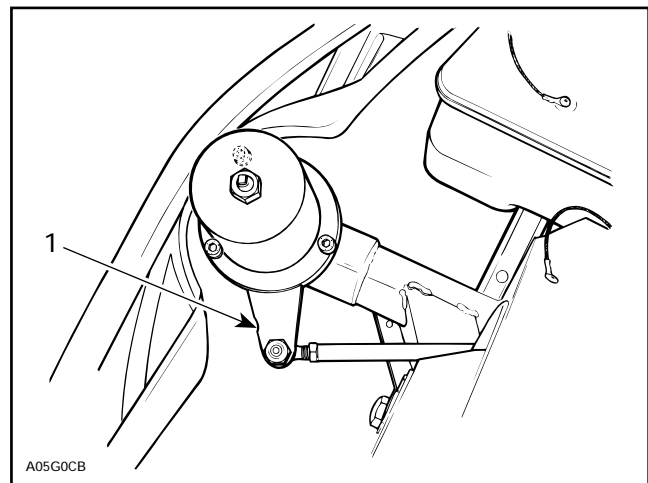
Unscrew shock piston rod nut then remove lock washer.

Unscrew 3 Allen screws retaining welded cover, then remove stopper and washers.

Remove O-rings carefully to avoid causing any damage.

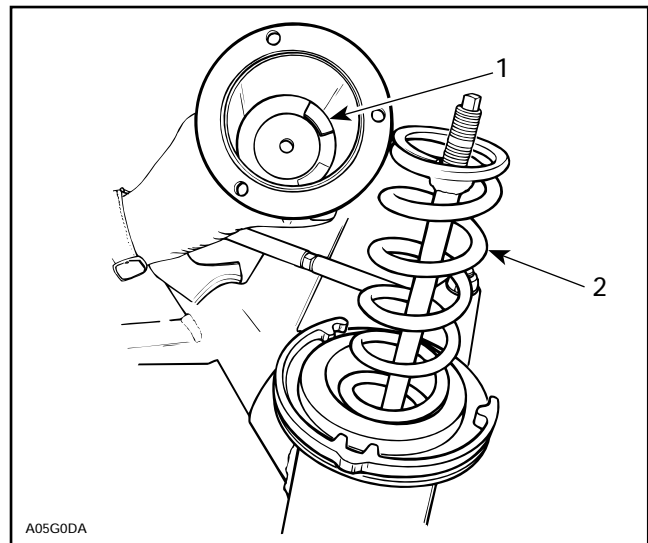
Shock with spring can then be removed from the slide.

Remove existing steering arm from top of slide.



1. Allen screws

NOTE : These washers and stopper may be wedged in cap.



1. Washers and stopper wedged in cover
2. Spring

Install steering arm **no. 14** with the bent angle toward the bottom.

Reinstall shock and all other remaining parts in the reverse order of removal.

INSTALLATION

Using the templates no. 1 (left) and no. 2 (right) supplied at the end of these instruction sheets, proceed to cut the holes in the left and right side of the bottom pan.

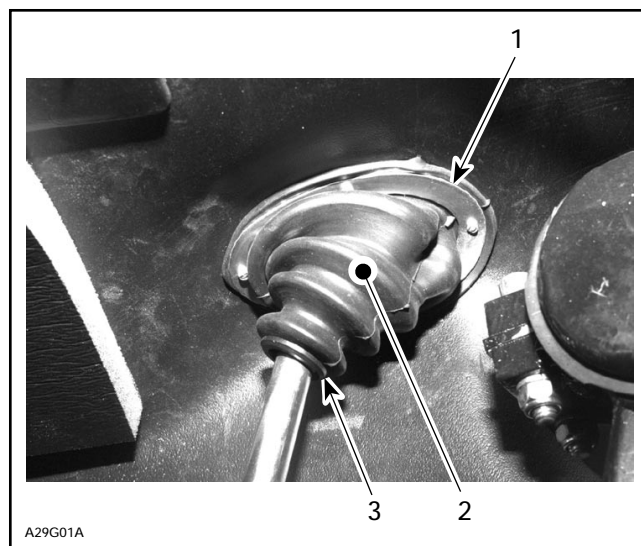
NOTE : Cut out the area indicated by LEFT SIDE REFLECTOR RECESS. Center the cut out area of the template over the reflector on the left side of the bottom pan. Repeat on right side using template no. 2.

Smooth any rough edges on the plastic surface.

Using the same template, drill four 3 mm (1/8 in) holes as indicated.

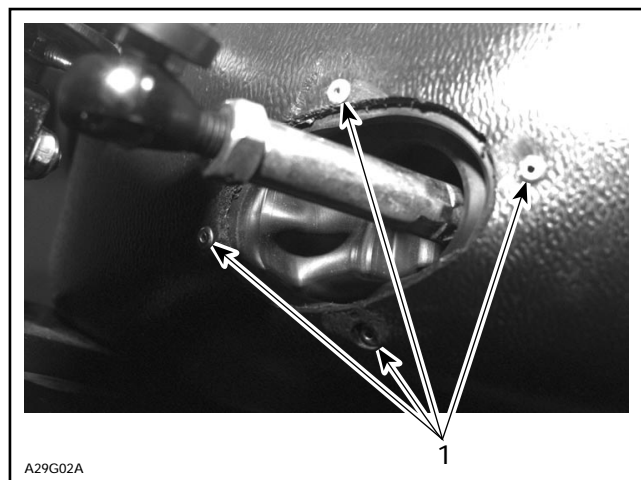
Install glide bushing no. 11 into small end of rubber boot no. 10.

Install the flange no. 9 over the rubber boot as shown in the following illustration.



1. Flange
2. Rubber boot
3. Glide bushing in rubber boot

Align the holes from the flange to those on the rubber boot then position the flange with the rubber boot inside the bottom pan. Secure the flange using rivets no. 12. Refer to the following illustration.



1. Align holes here

Install new tie-rod no. 8 by screwing it into the inner ball joint.

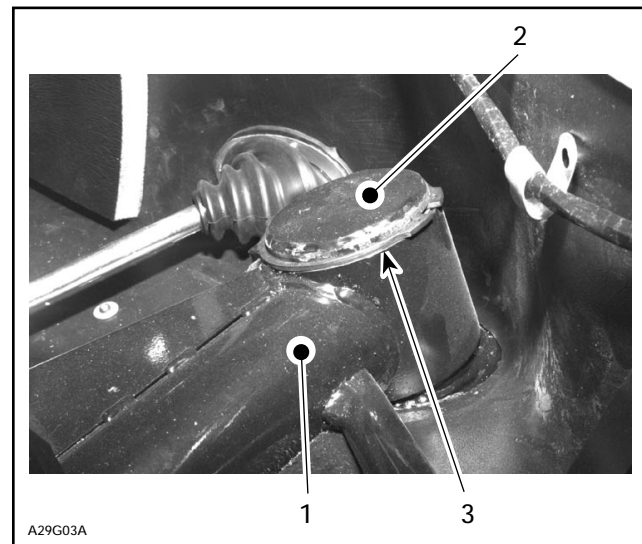
Install existing outer tie-rod end onto new tie-rod.

Install the middle plate no. 3 completely onto the new right side cross member no. 1.

Pry apart the existing cross member on the vehicle's right side of the frame. Insert the inner guide of the new right cross member. Secure with circlip no. 4.

Install existing shim, bolts, washers and nuts.

Refer to the following illustration.



1. Cross member on vehicle's frame
2. Inner guide of new cross member
3. Install circlip here

Pry apart the cross member on the vehicle's left side of the frame and insert the inner guide of the new left cross member. Secure with circlip no. 4. Same procedure as right side.

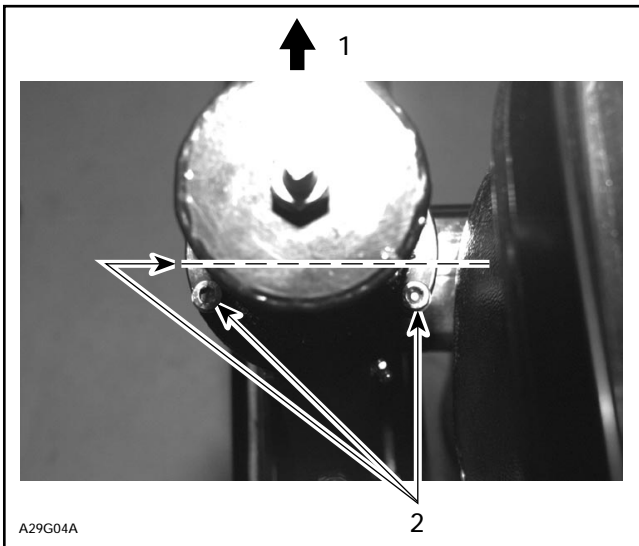
Slide middle plate so as there are 3 holes on the left and 3 holes on the right of the new cross members.

Install bolts no. 5, washers no. 6 and elastic nuts no. 7 into the middle plate.

REINSTALLATION

Reinstall LTS into new cross member.

Assure that the 2 rearmost Allen bolts are aligned with the new cross member.

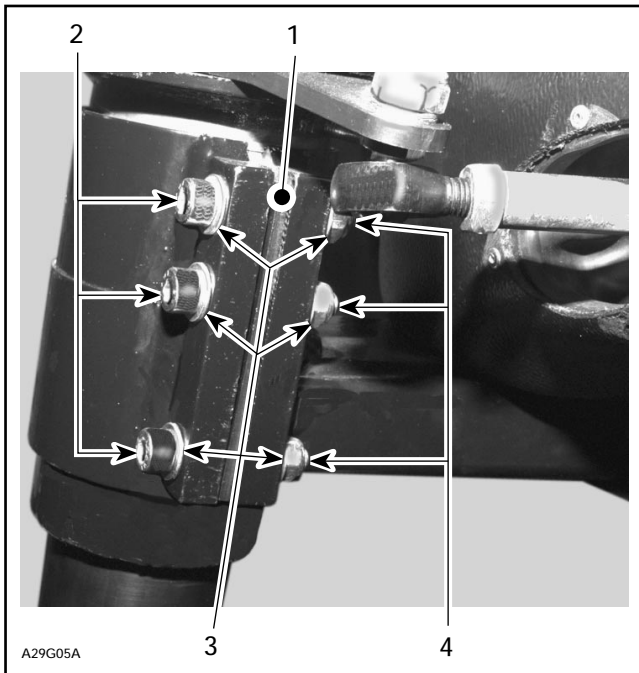


TOP VIEW

- 1. Front
- 2. Allen bolts aligned with cross member

Install adjustment plate(s) no. 22 and no. 23 as required, socket screw no. 19, washers no. 20 and elastic nut no. 21 into the new cross member.

Refer to the following illustration.



- 1. Adjustment plate
- 2. Socket screws
- 3. Washers
- 4. Elastic nut

Install tie-rod end into steering arm and tighten. Proceed with ski alignment.

Skid Plate

Center the skid plate no. 16 with the reinforcement ridges on the bottom pan.

Align the sides of the skid plate with the welded cross members.

Using the holes in the skid plate as a template, drill 5 mm (3/16 in) holes in bottom pan.

CAUTION : Drill at low speed being careful not to tear the insulating foam inside the bottom pan.

Install skid plate using rivets no. 17 and washers no. 18.

Install rivets from beneath, first passing through skid plate then bottom pan.

Install washers inside the engine compartment.

Locking Device for Second Gear

Locate the ball joint situated on the top of the transmission.

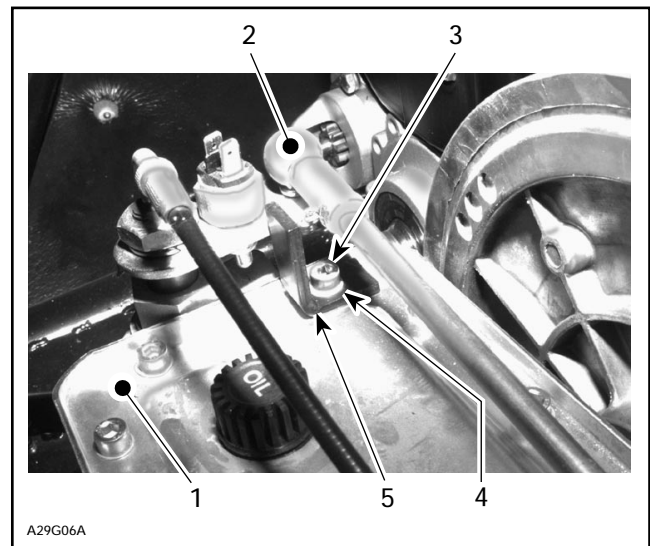
Carefully remove the circlip retaining the ball joint.

Lift upward on ball joint to release.

Remove the existing Allen bolt and washer.

Install the locking device no. 15, then reinstall the washer and Allen bolt.

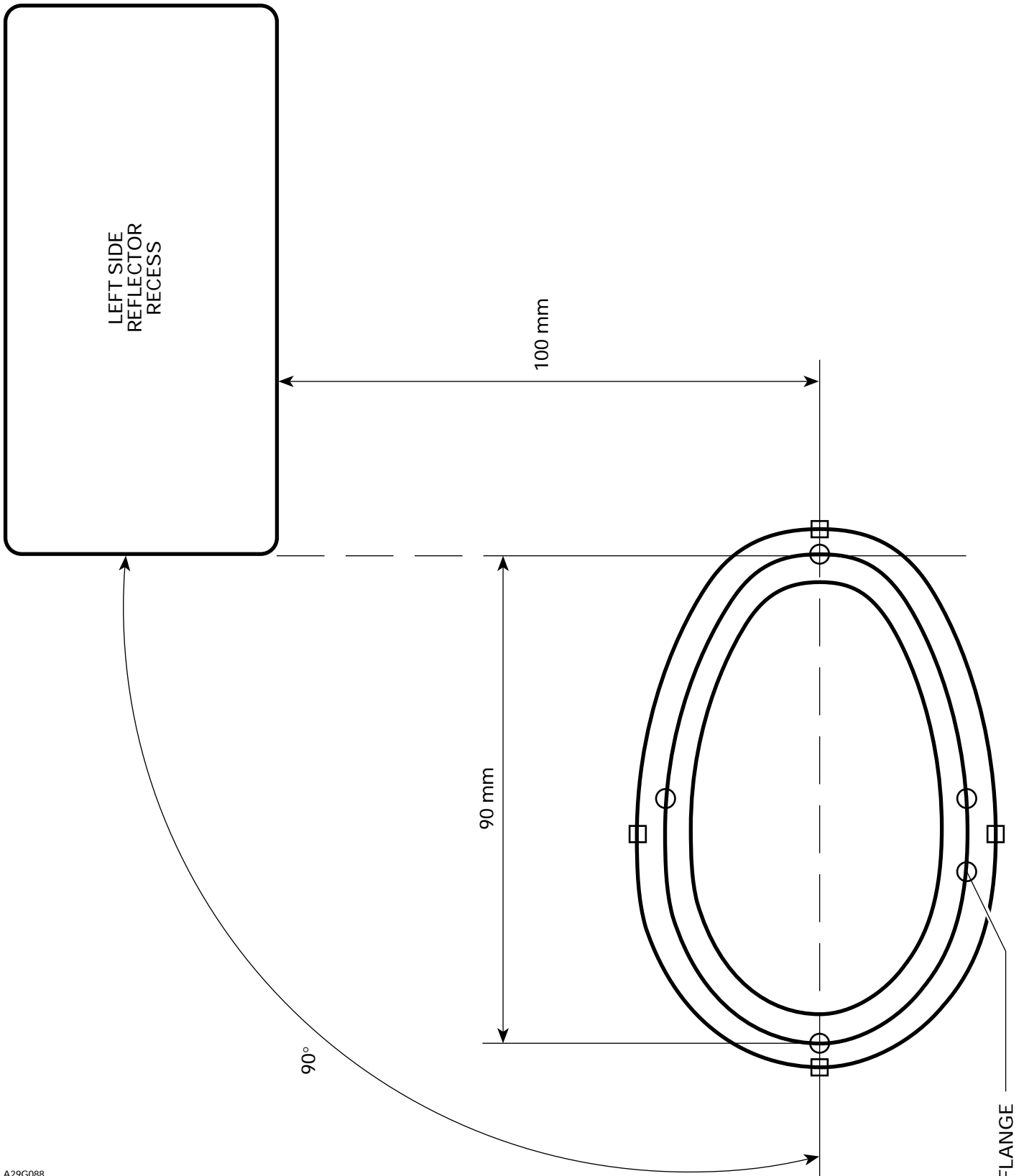
Refer to the following illustration.



- 1. Top of transmission
- 2. Ball joint
- 3. Allen bolt
- 4. Washer
- 5. Locking device

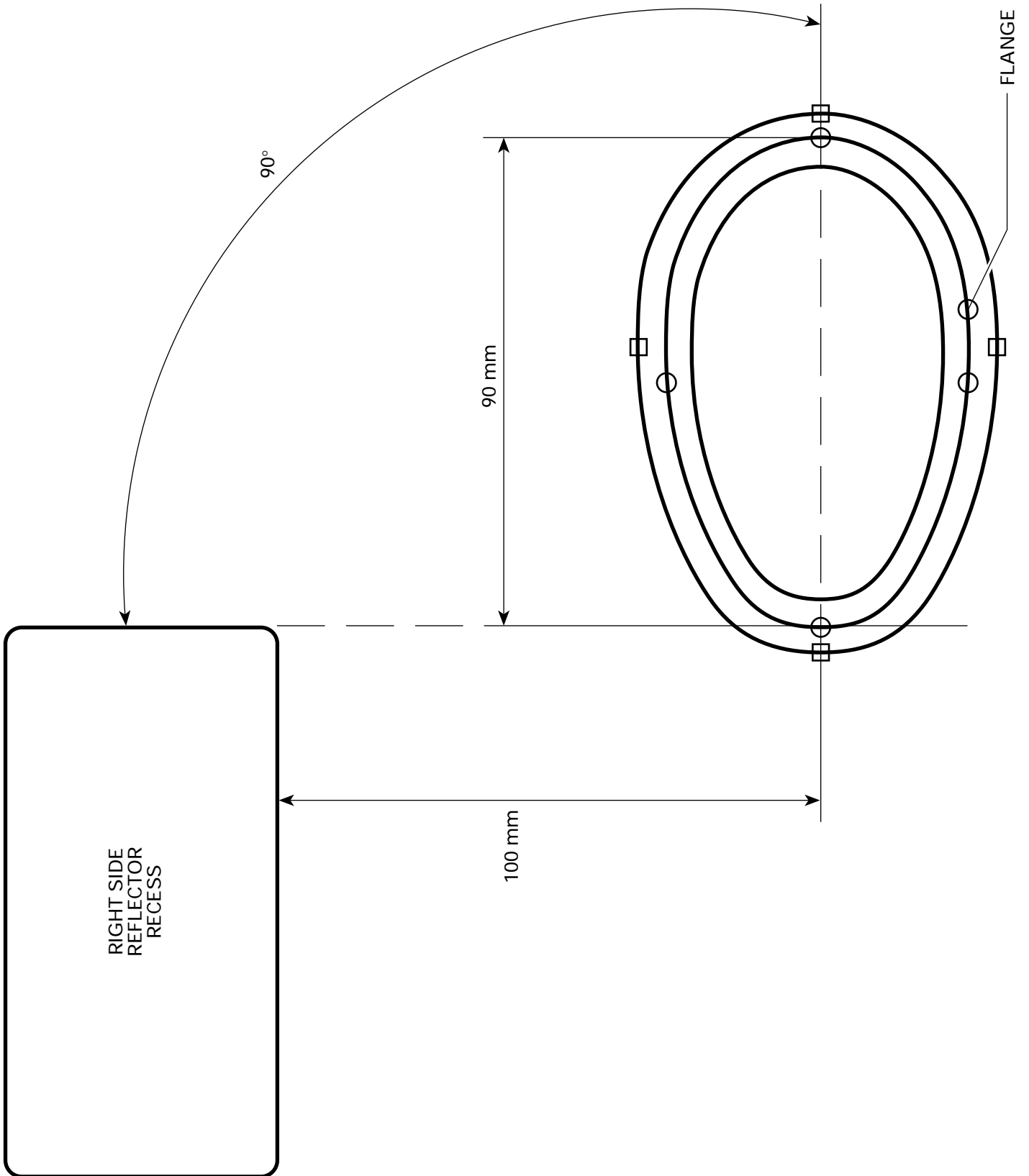
Install new reverse decal no. 13 over the existing decal on the left side of the dash.

TEMPLATE NO. 1



A29G088

TEMPLATE NO. 2



M5240321

1.	M5340320	Welded Cross Member, Right Side	Traverse soudée (côté droit)
2.	M5340323	Welded Cross Member, Left Side	Traverse soudée (côté gauche)
3.	M5440062	Middle plate	Plaque médiane
4.	M31015	Circlip (2)	Circlip (2)
5.	M40814	Bolt M10 (6)	Boulon M10 (6)
6.	M20005	Washer (12)	Rondelle (12)
7.	M33012	Elastic Nut M10 (6)	Écrou d'arrêt élastique M10 (6)
8.	M5440048	Tie-Rod (2)	Barre d'accouplement (2)
9.	M549442	Flange (2)	Flasque (2)
10.	M549440	Rubber Boot (2)	Soufflet de caoutchouc (2)
11.	M549441	Glide Bushing (2)	Coussinet glisseur (2)
12.	M36082	Rivet (8)	Rivet (8)
13.	415 0047 00	Reverse Decal (Not Shown)	Autocollant marche arrière (non-illustré)
14.	M5340332	Steering Arm (2)	Bras de direction (2)
15.	M5440337	Locking Device	Dispositif de verrouillage
16.	M5340335	Skid Plate	Plate-forme
17.	M36037	Rivet (10)	Rivet (10)
18.	M20002	Washer (10)	Rondelle (10)
19.	M40286	Socket Screw M8 (6)	Vis à tête creuse M8 (6)
20.	M20004	Washer (12)	Rondelle (12)
21.	M33011	Elastic Nut M8 (6)	Écrou d'arrêt élastique M8 (6)
22.	M5440538	Adjustment Plate (2)	Plaque d'ajustement (2)
23.	M5440712	Adjustment Plate (4)	Plaque d'ajustement (4)