



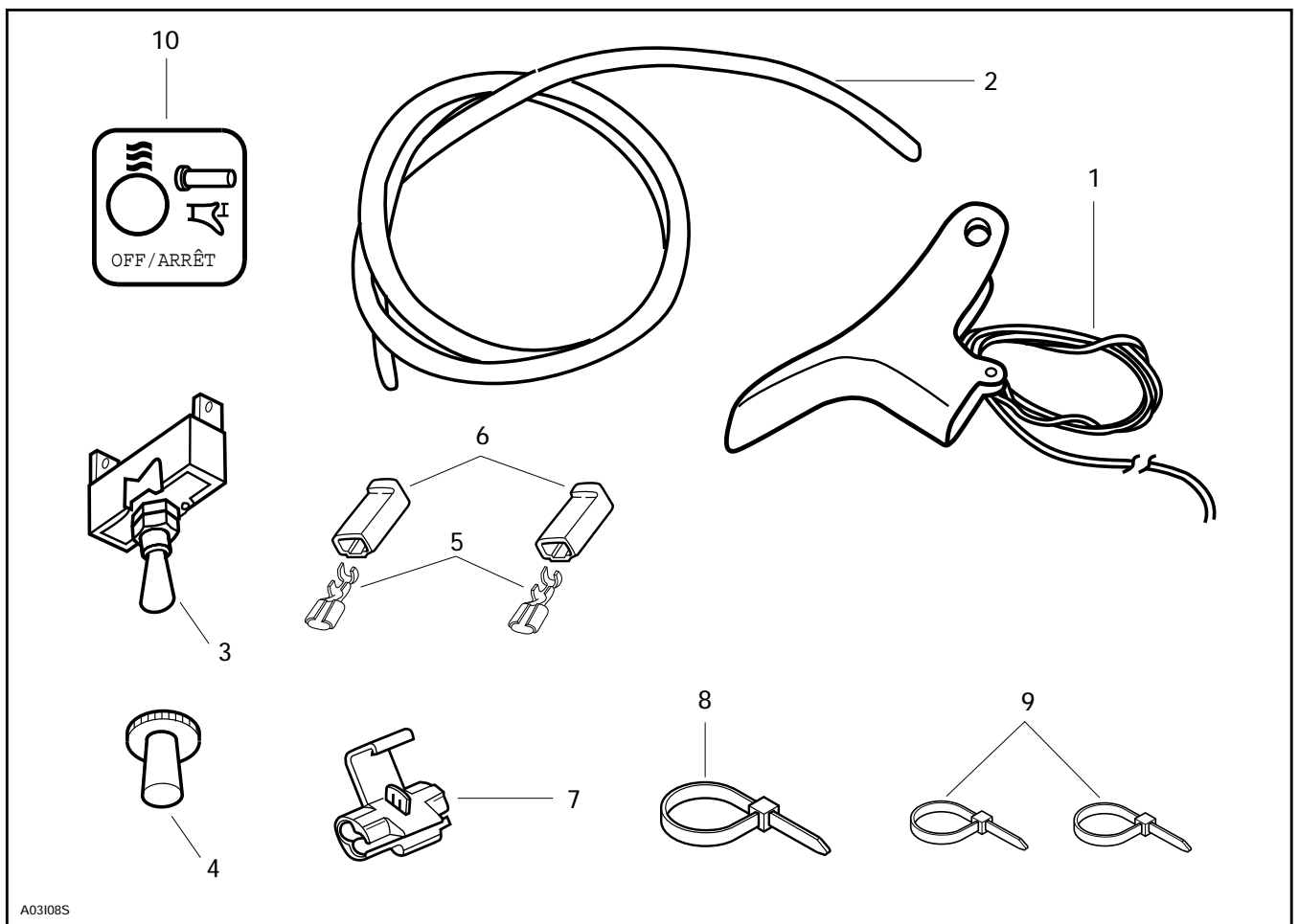
BOMBARDIER snowmobiles

HEATING THROTTLE KIT
(P / N 861 7530 00)

◆ **WARNING :** For safety reasons, this kit must be installed by an authorized Bombardier snowmobile dealer. Should removal of a locking device be required when undergoing disassembly / assembly, always replace with a new one. This instruction sheet should be given to the purchaser. This kit is designed for specific applicable models only. It is not recommended for vehicles other than those for which it was sold.

○ **NOTE :** Installation time is approximately 0.5 hour.

PARTS TO BE INSTALLED



1. Heating Throttle Lever
2. Plastic Tube
3. Switch
4. Switch Cover
5. Connector (2)

6. Connector Housing (2)
7. Joint Connector (2)
8. Tie-rod
9. Tie-rod (2)
10. Decal

INSTRUCTIONS

Insert the heating throttle lever wires through the plastic tube **no. 2**.

○ **NOTE** : Spray inner part of plastic tube with soapy water.

Remove the stopper from the throttle lever using long nose pliers.

Remove circlip from throttle cable to release it from throttle lever housing.

Remove the throttle lever pin. Once lever is free, remove throttle cable from lever.

○ **NOTE** : Throttle housing cover can be removed to ease routing of wires.

Reinstall throttle cable into new heated throttle lever **no. 1**.

Pass wires through throttle lever housing first then install the new lever by reinserting the pin.

Reinstall the throttle cable circlip.

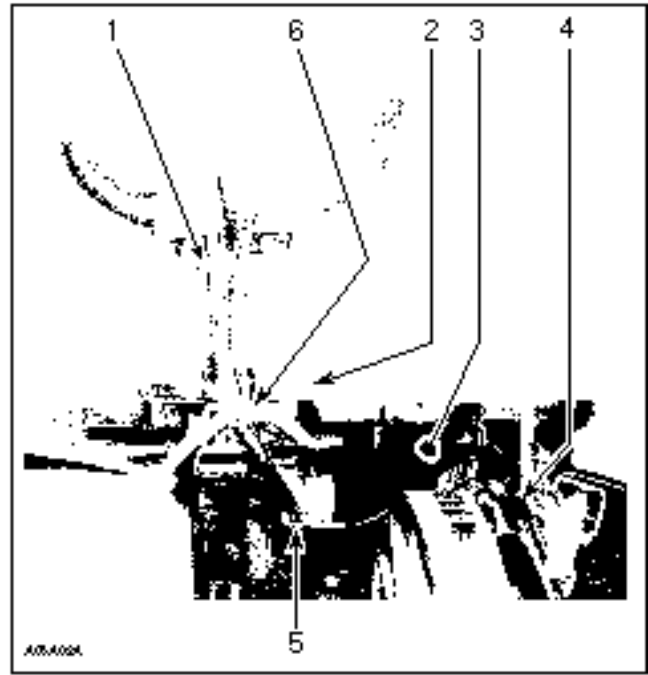
○ **NOTE** : Install circlip with its opening facing the front of the machine.

Reinstall the stopper on lever.

◆ **WARNING** : Make sure wires do not interfere with the smooth operation of the throttle lever.

Route the wires through the retaining support in front of the steering column, cut the large tie-rip to ease the passage of the wiring harness through the plate and finally route the harness behind the upper column support.

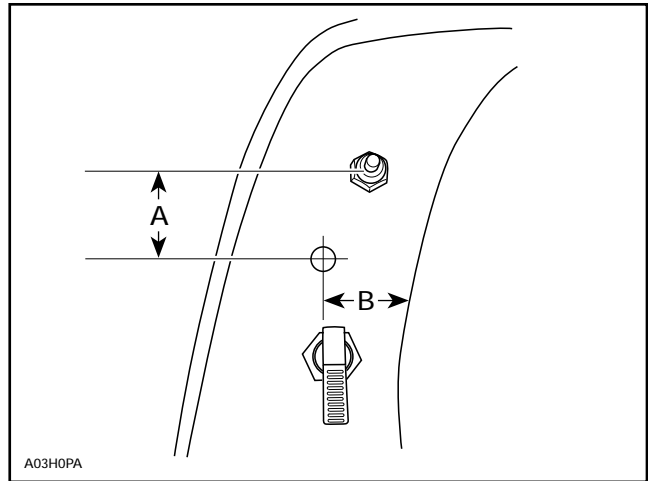
Install tie-rip **no. 8** and **no. 9** as illustrated.



- 1. Retaining Support
- 2. Plate
- 3. Upper Column Support
- 4. To Voltage Regulator
- 5. Tie-rip no. 9
- 6. Tie-rip no. 8 (Replaces existing tie-rip)

○ **NOTE** : Pass tie-rip through slots on plate.

Drill a 12.3 mm (31/64 in) hole as illustrated.



- A. 45 mm (1-7/8 in)
- B. 45 mm (1-7/8 in)

Apply decal **no. 10**.

○ **NOTE** : Remove one of the switch nuts. Install the switch **no. 3** and the switch cover **no. 4**.

Install a connector **no. 5** and a connector housing **no. 6** to the end of the brown wire from the throttle lever.

Connect to switch at the OFF position.

Use a YELLOW wire 10 cm (4 in) long (not included in kit). Install a connector no. 5 and a connector housing no. 6 at one end of the YELLOW wire and connect to the ON position of the switch.

Install joint connector no. 7 at other end of YELLOW wire and connect to YELLOW wire on voltage regulator.

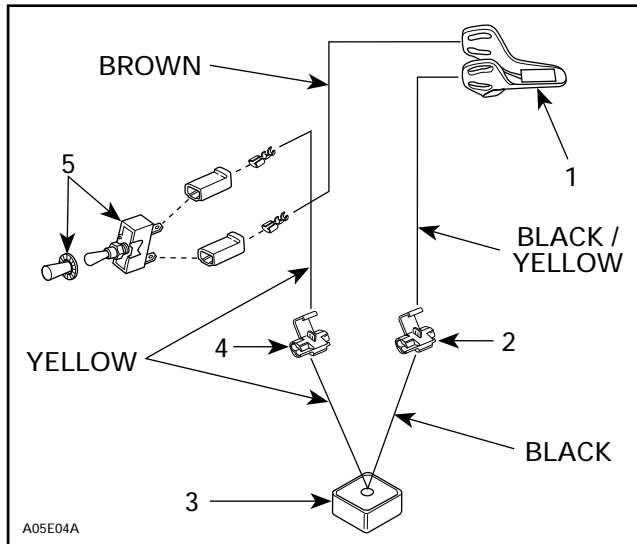
Install joint connector no. 7 to YELLOW / BLACK ground wire and connect to BLACK wire on voltage regulator.

Connect wires as illustrated below.

Install tie-rip no. 9 to hold wires near voltage regulator.

◆ **WARNING** : Ensure all terminals are properly crimped on the wires and that all connector housings are properly fastened. Keep wires away from any rotating, moving, heating and vibrating parts. Use proper fastening devices as required.

Heating Throttle Circuit



- 1. Heating Throttle
- 2. Joint Connector
- 3. Voltage Regulator
- 4. Joint Connector
- 5. Heating Throttle Switch

◆ **WARNING** : Test operation of the throttle lever for proper functioning and heating.

861 7530 00

1.	572 0804 00	Heating Throttle Lever	Manette d'accélérateur chauffante
2.	414 9889 00	Plastic Tube	Tube de plastique
3.	410 1107 00	Switch	Interrupteur
4.	570 0139 00	Switch Cover	Couvercle d'interrupteur
5.	561 5031 00	Connector (2)	Raccord femelle (2)
6.	409 2048 00	Connector Housing (2)	Logement de raccords (2)
7.	409 9004 00	Joint Connector (2)	Cosse de raccordement (2)
8.	414 1152 00	Tie-rap	Attache
9.	748 0010 00	Tie-rap (2)	Attache (2)
10.	414 9961 00	Decal	Autocollant